

District I  
1625 N. French Dr., Hobbs, NM 88240  
District II  
1301 W. Grand Avenue, Artesia, NM 88210  
District III  
1000 Rio Brazos Road, Aztec, NM 87410  
District IV  
1220 S. St. Francis Dr., Santa Fe, NM 87505

State of New Mexico  
Energy Minerals and Natural Resources

Form C-101  
June 16, 2008

Oil Conservation Division  
1220 South St. Francis Dr.  
Santa Fe, NM 87505

Submit to appropriate District Office

☒ AMENDED REPORT

**APPLICATION FOR PERMIT TO DRILL, RE-ENTER, DEEPEN,  
PLUGBACK, OR ADD A ZONE**

<sup>1</sup> Operator Name and Address CHEVRON U.S.A. INC. 15 SMITH ROAD MIDLAND, TEXAS 79705		<sup>2</sup> OGRID Number 4323
		<sup>3</sup> API Number 30 - 025-34097
<sup>3</sup> Property Code	<sup>5</sup> Property Name STATE "AN"	<sup>6</sup> Well No. 11
<sup>9</sup> Proposed Pool 1 VACUUM BLINEBRY		<sup>10</sup> Proposed Pool 2

**<sup>7</sup> Surface Location**

UL or lot no. B	Section 7	Township 18-S	Range 35-E	Lot Idn	Feet from the 900'	North/South line NORTH	Feet from the 1440'	East/West line EAST	County LEA
--------------------	--------------	------------------	---------------	---------	-----------------------	---------------------------	------------------------	------------------------	---------------

**<sup>8</sup> Proposed Bottom Hole Location If Different From Surface**

UL or lot no. B	Section 7	Township 18-S	Range 35-E	Lot Idn	Feet from the 881	North/South line NORTH	Feet from the 1425	East/West line EAST	County LEA
--------------------	--------------	------------------	---------------	---------	----------------------	---------------------------	-----------------------	------------------------	---------------

**Additional Well Information**

<sup>11</sup> Work Type Code PLUGBACK	<sup>12</sup> Well Type Code O	<sup>13</sup> Cable/Rotary	<sup>14</sup> Lease Type Code S	<sup>15</sup> Ground Level Elevation 3963' GL
<sup>16</sup> Multiple NO	<sup>17</sup> Proposed Depth 11,704'	<sup>18</sup> Formation BLINEBRY	<sup>19</sup> Contractor	<sup>20</sup> Spud Date

**<sup>21</sup> Proposed Casing and Cement Program**

Hole Size	Casing Size	Casing weight/foot	Setting Depth	Sacks of Cement	Estimated TOC
NO CHANGE					

<sup>22</sup> Describe the proposed program. If this application is to DEEPEN or PLUG BACK, give the data on the present productive zone and proposed new productive zone Describe the blowout prevention program, if any. Use additional sheets if necessary.

CHEVRON U.S.A. INC. INTENDS TO RECOMPLETE THE SUBJECT WELL INTO THE VACUUM BLINEBRY FORMATION. CURRENTLY, THE WELL IS TEMPORARILY ABANDONED WITH A CIBP SET @ 8150'. THE BLINEBRY FORMATION WILL BE FRAC STIMULATED TO MAXIMIZE PRODUCTIVITY.

PLEASE FIND ATTACHED, THE INTENDED PROCEDURE, WELLBORE DIAGRAM, C-102 PLAT, & C-144 PIT INFORMATION

**Permit Expires 2 Years From Approval  
Date Unless ~~Drilling Underway~~  
Plugback**

<sup>23</sup> I hereby certify that the information given above is true and complete to the best of my knowledge and belief

Signature:



Printed name.  
DENISE PINKERTON

Title:  
REGULATORY SPECIALIST

E-mail Address:  
leakejd@chevron.com

Date:  
02-11-2010 / 02/22/2010

Phone:  
432-687-7375

OIL CONSERVATION DIVISION

Approved by:



Title:

PETROLEUM ENGINEER

Approval Date

FEB 24 2010

Expiration Date:

Conditions of Approval Attached ☐

District I  
1625 N. French Dr., Hobbs, NM 88240  
District II  
1301 W. Grand Avenue, Artesia, NM 88210  
District III  
1000 Rio Brazos Rd., Aztec, NM 87410  
District IV  
1220 S. St. Francis Dr., Santa Fe, NM 87505

State of New Mexico  
Energy, Minerals & Natural Resources Department  
**OIL CONSERVATION DIVISION**  
1220 South St. Francis Dr.  
Santa Fe, NM 87505

Form C-102  
Revised October 15, 2009  
Submit one copy to appropriate  
District Office

☐ AMENDED REPORT

**WELL LOCATION AND ACREAGE DEDICATION PLAT**

<sup>1</sup> API Number 30-025-34097		<sup>2</sup> Pool Code 61850		<sup>3</sup> Pool Name Vacuum Blinebry	
<sup>4</sup> Property Code 11093		<sup>5</sup> Property Name State 'AN' Lease			<sup>6</sup> Well Number 11
<sup>7</sup> OGRID No. 4323		<sup>8</sup> Operator Name Chevron USA			<sup>9</sup> Elevation 3985' KB

<sup>10</sup> Surface Location

UL or lot no.	Section	Township	Range	Lot Idn	Feet from the	North/South line	Feet from the	East/West line	County
B	7	18S	35E		900	North	1440	East	Lea

<sup>11</sup> Blinebry - Bottom Hole Location If Different From Surface

UL or lot no.	Section	Township	Range	Lot Idn	Feet from the	North/South line	Feet from the	East/West line	County
B	7	18S	35E		881	North	1425	East	Lea

<sup>12</sup> Dedicated Acres 40	<sup>13</sup> Joint or Infill	<sup>14</sup> Consolidation Code	<sup>15</sup> Order No.
-------------------------------------	-------------------------------	----------------------------------	-------------------------

No allowable will be assigned to this completion until all interests have been consolidated or a non-standard unit has been approved by the division.

<sup>16</sup> 	STATE 'AN' LEASE		<sup>17</sup> <b>OPERATOR CERTIFICATION</b> I hereby certify that the information contained herein is true and complete to the best of my knowledge and belief, and that this organization either owns a working interest or released mineral interest in the land including the proposed bottom hole location or has a right to drill this well at this location pursuant to a contract with an owner of such a mineral or working interest, or to a voluntary pooling agreement or a compulsory pooling order heretofore entered by the division. Signature: <u>Scott M. Ingram</u> Date: <u>2/17/10</u> Printed Name: <u>SCOTT M. INGRAM</u>
			<sup>18</sup> <b>SURVEYOR CERTIFICATION</b> I hereby certify that the well location shown on this plat was plotted from field notes of actual surveys made by me or under my supervision, and that the same is true and correct to the best of my belief.
			Date of Survey
			Signature and Seal of Professional Surveyor
			Certificate Number

New Mexico State "AN" No. 11

API No. 30-025-34097

Workover Procedure

1. Rig up pulling unit. Install BOP.
2. Rig up wireline truck.
3. Run Spectral GR-CNL log from 6600' to 4600'.
4. Run Radial CET log from 6600' to 4600' with 1000 psi on the casing and with 0 psi on the casing.
5. Perforate the 5-1/2" casing from 6006' to 6248' w/ 1 JSPF. Technical team to provide detailed perfs after review of the Spectral GR log.
6. Rig down wireline truck.
7. RIH w/ 5-1/2" treating packer on 3-1/2" workstring and set at 5950'.
8. Acidize Blinbry perfs w/ 3,500 gallons 15% NEFE HCl. Pump acid at 6 BPM. Drop 50% excess ball sealers for diversion.
9. Frac Blinbry perfs w/ 36,000 gallons 30# gelled water and 112,000# 16-30 sand at 40 BPM as follows:
  - a. Pump 12,000 gallon pad
  - b. Pump 4,000 gallons gel ramping from 2-3 ppg sand (10,000 lbs sand total)
  - c. Pump 4,000 gallons gel ramping from 3-4 ppg sand (14,000 lbs sand total)
  - d. Pump 4,000 gallons gel ramping from 4-5 ppg sand (18,000 lbs sand total)
  - e. Pump 4,000 gallons gel ramping from 5-6 ppg sand (22,000 lbs sand total)
  - f. Pump 8,000 gallons gel w/ 6 ppg resin coated sand (48,000 lbs sand total)
  - g. Flush to top perf with fresh water
10. Flow back load.
11. Release packer and TOH w/ workstring.
12. RIH w/ 2-7/8" production tubing and land at 6,000'
13. RIH w/ pump and rods.
14. Place well on production and test.

PTB 2/3/10

**PROPOSED  
WELLBORE DIAGRAM**

<b>Created:</b>	10/29/2003	<b>By:</b> SMG/MCD			
<b>Updated:</b>	2/4/2010	<b>By:</b> SMI			
<b>Lease:</b>	State AN		<b>Well No.:</b> 11	<b>Field:</b> Vacuum Blinebry	
<b>Surface Location:</b>	900' FNL & 1440' FEL		<b>Unit Ltr:</b> B	<b>Sec:</b> 7	<b>TSHP/Range:</b> 18S-35E
<b>Bottomhole Location:</b>	559' FNL & 658' FEL		<b>Unit Ltr:</b> A	<b>Sec:</b> 7	<b>TSHP/Range:</b> 18S-35E
<b>County:</b>	Lea	<b>St:</b> NM	<b>St Lease:</b> E-7653	<b>API:</b> 30-025-34097	<b>Cost Center:</b> BCT494300
<b>Current Status:</b>	TA		<b>Elevation:</b> 3980' KB		
<b>Directions to Wellsite:</b>	Buckeye, New Mexico				

This well was a replacement well for the original State AN #11 well that was drilled in 1969 with a surface location of 330' FNL & 2310' FEL, Unit Ltr B, Sec 7, T-18-S, R-35-E, Lea, NM  
The original State AN #11 well went into the the Central Vacuum Unit as CVU #123 CVU #123 was permanently plugged on 8/10/01

**Surface Casing**

Size	11 3/4"
Wt	42# WC-40
Set @	620'
Sxs cmt	450 Class C
Circ	Yes, 124 sx
TOC	Surface
Hole Size	14 3/4"

**Intermediate Casing**

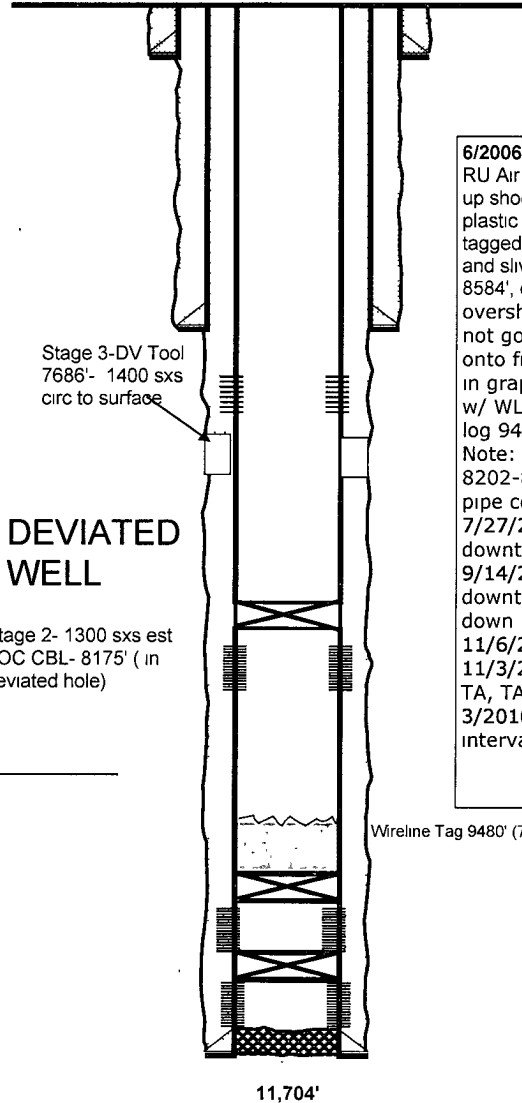
Size	8 5/8"
Wt	32# WC-50
Set @	3515'
Sxs Cmt	1000
Circ	Yes, 107 sx
TOC	Surface
Hole Size	11"

**Production Casing**

Size	5 1/2"
Wt	17# WC-70
Set @	11681'
Sxs Cmt	2900
Circ	Yes, 107 sx
TOC	
Hole Size	7 7/8"

<b>PBTD:</b>	8150
<b>Bridge Plug Set @:</b>	8150
<b>CIBP:</b>	

<b>TD:</b>	11681'
<b>Total Drill Depth(Loggers TD):</b>	11,704



KB	3980'
DF	3980'
GL	3963'
Spud Date	9/3/1997
Completion Date	1/21/1998

**6/2006- 7/6/2006**

RU Air Unit Drig 8540' and fell thru to 8562' CIBP Pick up shoemill and drilled 6565'-8570' Recovered hard white plastic (pump cups?) Continue to CO 8580'- hard drlg, tagged 8578', picked up new shoe, drlg 8570-8582', rubber and slivers or wire, metal cuttings, picked up new shoe, tag 8584', drlg 8564'-8586', metal cuttings, picked up overshot, cleaned out 8773', tagged 9572', would not go deeper, on fish. Picked up overshot, latched onto fish, pulled. Recovered piece of wood, rubber in grapple. Ran Baker MicroVertilog, tagged 9480' w/ WL, Casing is bad 8186'-8799'. (Ran inspection log 9480'-3500'.) Ran submersible equipment. Note: Have communication btwn two sets of perfs 8202-8556' & 8616'-8806' and most likely behind pipe communication downhole. 7/27/2006- sub pump full of iron sulfide and severe downthrust wear. Mag M treatment, replaced sub 9/14/2006- sub pump full of iron sulfide and severe downthrust wear. Mag M + continuous treatment down backside, replaced sub 11/6/2006- sub pump failure, suspect iron sulfide 11/3/2008 - set CIBP @ 8150', chart and tested for TA, TA expires on 12/5/2013 3/2010 - recompleat Blinebry proposed completion interval 6000-6250'.

**Perforations**

Abo	8284'-8556'
Abo	8556'-8506', 8500'-8490', 8454'-8444', 8430'-8405', 8350'-8340', 8326'-8322', 8316'-8284', 8266'-8278', 8202'-8210'
Lower Abo Reef, 2 JSPF, 266 HLES	8616'-8624', 8630'-8634', 8638'-8662', 8674'-8715', 8720'-8734', 8744'-8760', 8770'-8784', 8794'-8806'

Wolfcamp, 2 JSPF, P/B'd	9670'-9690', 9700'-9756', 9794'-9840', 9860'-9920'
Upper Penn, 2 JSPF, 56 HLES, P/B'd	10236'-10264'
Upper Penn, 2 JSPF, P/B'd	10336'-10348', 10350'-10362', 10370'- 10400'
Atoka, 2 JSPF, 60 HLES, P/B'd	10596'-10610', 10624'-10640'

**CURRENT  
WELLBORE DIAGRAM**

<b>Created:</b>	10/29/2003	<b>By:</b> SMG/MCD			
<b>Updated:</b>	1/19/2010	<b>By:</b> SMI			
<b>Lease:</b>	State AN		<b>Well No.:</b> 11	<b>Field:</b> Vacuum Abo Reef	
<b>Surface Location:</b>	900' FNL & 1440' FEL		<b>Unit Ltr:</b> B	<b>Sec:</b> 7	<b>TSHP/Range:</b> 18S-35E
<b>Bottomhole Location:</b>	559' FNL & 658' FEL		<b>Unit Ltr:</b> A.	<b>Sec:</b> 7	<b>TSHP/Range:</b> 18S-35E
<b>County:</b>	Lea	<b>St:</b> NM	<b>St Lease:</b> E-7653	<b>API:</b> 30-025-34097	<b>Cost Center:</b> BCT494300
<b>Current Status:</b>	TA		<b>Elevation:</b> 3980' KB		
<b>Directions to Wellsite:</b>	Buckeye, New Mexico				

This well was a replacement well for the original State AN #11 well that was drilled in 1969 with a surface location of 330' FNL & 2310' FEL, Unit Ltr B, Sec 7, T-18-S, R-35-E, Lea, NM  
The original State AN #11 well went into the the Central Vacuum Unit as CVU #123 CVU #123 was permanently plugged on 8/10/01

**Surface Casing**

Size	11 3/4"
Wt	42#, WC-40
Set @	620'
Sxs cmt	450 Class C
Circ	Yes, 124 sx
TOC	Surface
Hole Size	14 3/4"

**Intermediate Casing**

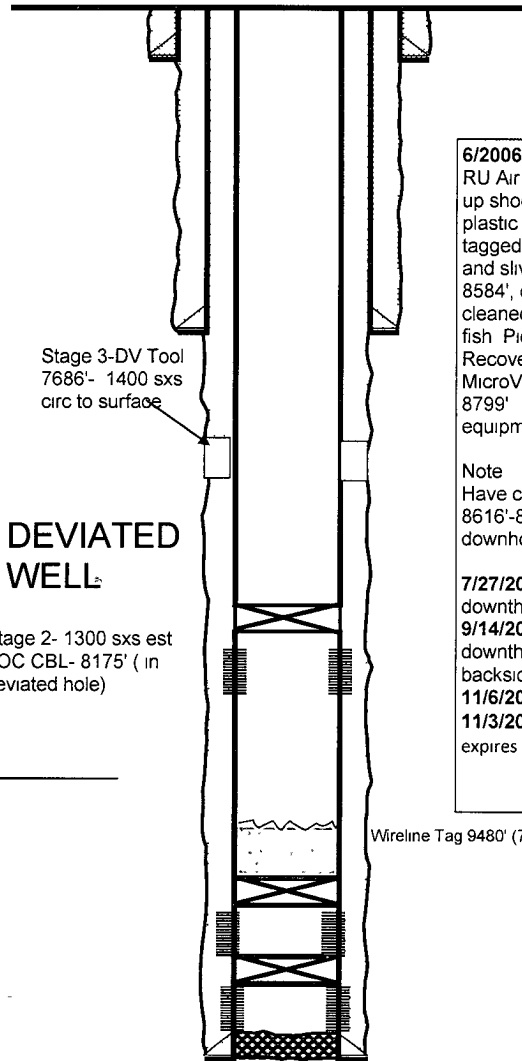
Size	8 5/8"
Wt	32#, WC-50
Set @	3515'
Sxs Cmt	1000
Circ	Yes, 107 sx
TOC	Surface
Hole Size	11"

**Production Casing**

Size	5 1/2"
Wt	17#, WC-70
Set @	11681'
Sxs Cmt	2900
Circ	Yes, 107 sx
TOC	
Hole Size	7 7/8"

<b>PBTD:</b>	8150
<b>Bridge Plug Set @:</b>	8150
<b>CIBP:</b>	

<b>TD:</b>	11681'
<b>Total Drill Depth(Loggers TD):</b>	11,704



KB	3980'
DF	3980'
GL	3963'
Spud Date	9/3/1997
Completion Date	1/21/1998

**6/2006- 7/6/2006**

RU Air Unit Drlg 8540' and fell thru to 8562' CIBP Pick up shoemill and drilled 6565'-8570' Recovered hard white plastic (pump cups?) Continue to CO 8580'- hard drlg, tagged 8578', picked up new shoe, drlg 8570-8582', rubber and slivers or wire, metal cuttings, picked up new shoe, tag 8584', drlg 8564'-8586', metal cuttings, picked up overshot, cleaned out 8773', tagged 9572', would not go deeper, on fish Picked up overshot, latched onto fish, pulled Recovered piece of wood, rubber in grapple Ran Baker MicroVertilog, tagged 9480' w/ WL, Casing is bad 8186'-8799' (Ran inspection log 9480'-3500' ) Ran submersible equipment

**Note**

Have communication btwn two sets of perfs 8202-8556' & 8616'-8806' and most likely behind pipe communication downhole.

**7/27/2006-** sub pump full of iron sulfide and severe downthrust wear Mag M treatment, replaced sub  
**9/14/2006-** sub pump full of iron sulfide and severe downthrust wear Mag M+ continuous treatment down backside, replaced sub  
**11/6/2006-** sub pump failure, suspect iron sulfide  
**11/3/2008** - set CIBP @ 8150', chart and tested for TA, TA expires on 12/5/2013

**Perforations**

Abo	8284'-8556'
Abo	8556'-8506', 8500'-8490', 8454'-8444', 8430'-8405', 8350'-8340', 8326'-8322', 8316'-8284', 8266'-8278', 8202'-8210'
Lower Abo Reef, 2 JSPF, 266 HLES	8616'-8624', 8630'-8634', 8638'-8662', 8674'-8715', 8720'-8734', 8744'-8760', 8770'-8784', 8794'-8806'

Wolfcamp, 2 JSPF, P/B'd	9670'-9690', 9700'-9756', 9794'-9840', 9860'-9920'
Upper Penn, 2 JSPF, 56 HLES, P/B'd	10236'-10264'
Upper Penn, 2 JSPF, P/B'd	10336'-10348', 10350'-10362', 10370'- 10400'
Atoka, 2 JSPF, 60 HLES, P/B'd	10596'-10610', 10624'-10640'