

DISTRICT I
1625 N. French Dr., Hobbs, NM 88240

State of New Mexico
Energy, Minerals & Natural Resources Department

Form C-102
Revised August 15, 2000
Submit to Appropriate District Office
State Lease - 4 Copies
Fee Lease - 3 Copies

DISTRICT II
P.O. Drawer DD, Artesia, NM 88211-0719

DISTRICT III
1000 Rio Brazos Rd., Artec, NM 87410

OIL CONSERVATION DIVISION
2040 South Pacheco
Santa Fe, NM 87505

DISTRICT IV
2040 South Pacheco, Santa Fe, NM 87505

☐ AMENDED REPORT

WELL LOCATION AND ACREAGE DEDICATION PLAT

API Number 30-025-36087	Pool Code	Pool Name Wildcat (Strawn)
Property Code 30965	Property Name MADERA "36" STATE	Well Number 1
OGRID No. 150628	Operator Name PURE RESOURCES, L.P.	Elevation 3197'

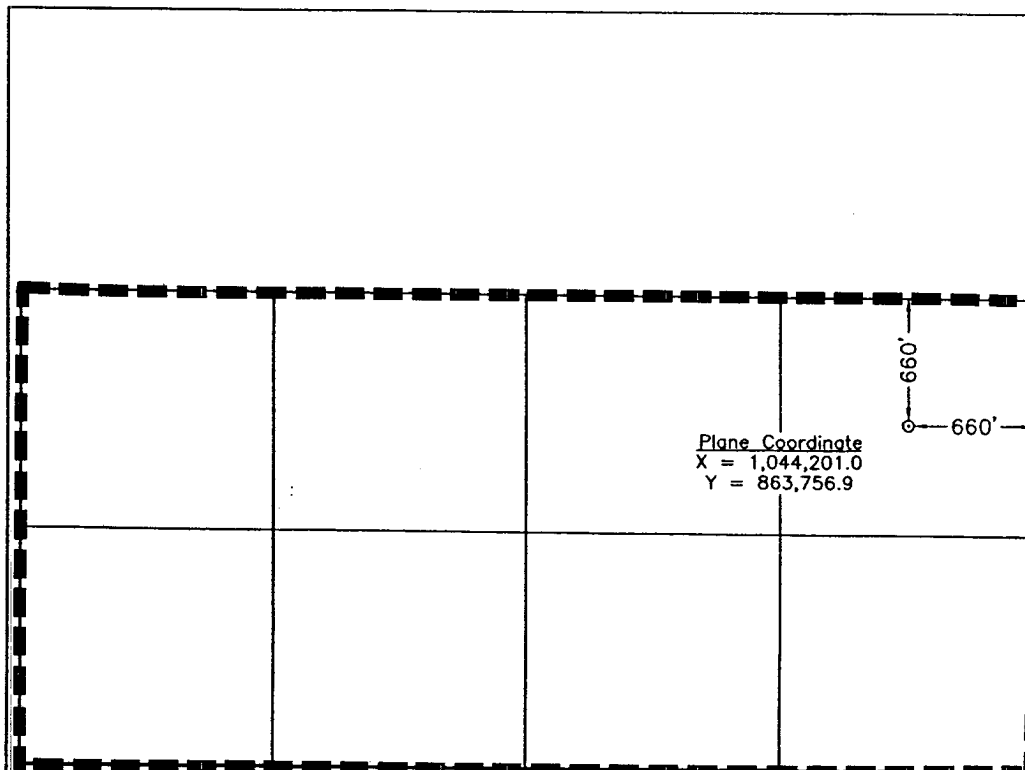
Surface Location

UL or lot No. A	Section 36	Township 26 S	Range 34 E	Lot Idn	Feet from the 660	North/South line NORTH	Feet from the 660	East/West line EAST	County LEA
--------------------	---------------	------------------	---------------	---------	----------------------	---------------------------	----------------------	------------------------	---------------

Bottom Hole Location If Different From Surface

UL or lot No.	Section	Township	Range	Lot Idn	Feet from the	North/South line	Feet from the	East/West line	County
Dedicated Acres 320	Joint or Infill	Consolidation Code	Order No.						

NO ALLOWABLE WILL BE ASSIGNED TO THIS COMPLETION UNTIL ALL INTERESTS HAVE BEEN CONSOLIDATED OR A NON-STANDARD UNIT HAS BEEN APPROVED BY THE DIVISION



OPERATOR CERTIFICATION

I hereby certify the information contained herein is true and complete to the best of my knowledge and belief.

Alan W. Bohling
Signature

Alan W. Bohling
Printed Name

Regulatory Analyst
Title

12/12/2003
Date

SURVEYOR CERTIFICATION

I hereby certify that the well location shown on this plat was plotted from field notes of actual surveys made by me or under my supervision and that the same is true and correct to the best of my belief.

November 22, 2002

Date Surveyed
Signature & Seal of Professional Surveyor

LVA

W.O. Num. 2002-0708
Signature

W.O. Num. 2002-0708

Certificate No. WAGON McDONALD 12185

NOTE:

- 1) Plane Coordinates shown hereon are Lambert Grid and Conform to the "Texas Coordinate System", Texas Central Zone, North American Datum of 1927. Distances shown hereon are mean horizontal surface values.