

District I
1625 N. French Dr., Hobbs, NM 88240
District II
1301 W. Grand Avenue, Artesia, NM 88210
District III
1000 Rio Brazos Rd., Aztec, NM 87410
District IV
1220 S. St. Francis Dr., Santa Fe, NM 87505

State of New Mexico
Energy, Minerals & Natural Resources Department
OIL CONSERVATION DIVISION
220 South St. Francis Dr.
Santa Fe, NM 87505

Form C-102
Revised October 12, 2005
Submit to Appropriate District Office
State Lease- 4 Copies
Fee Lease- 3 Copies
☐ AMENDED REPORT

WELL LOCATION AND ACREAGE DEDICATION PLAT

API Number 30-025-39105	Pool Code 51020	Pool Name Red Hills; Bone Spring
Property Code 39858	Property Name LOMAS ROJAS "26" STATE Com	Well Number 6
OGRID No. 7377	Operator Name EOG RESOURCES, INC.	Elevation 3336.0'

Surface Location

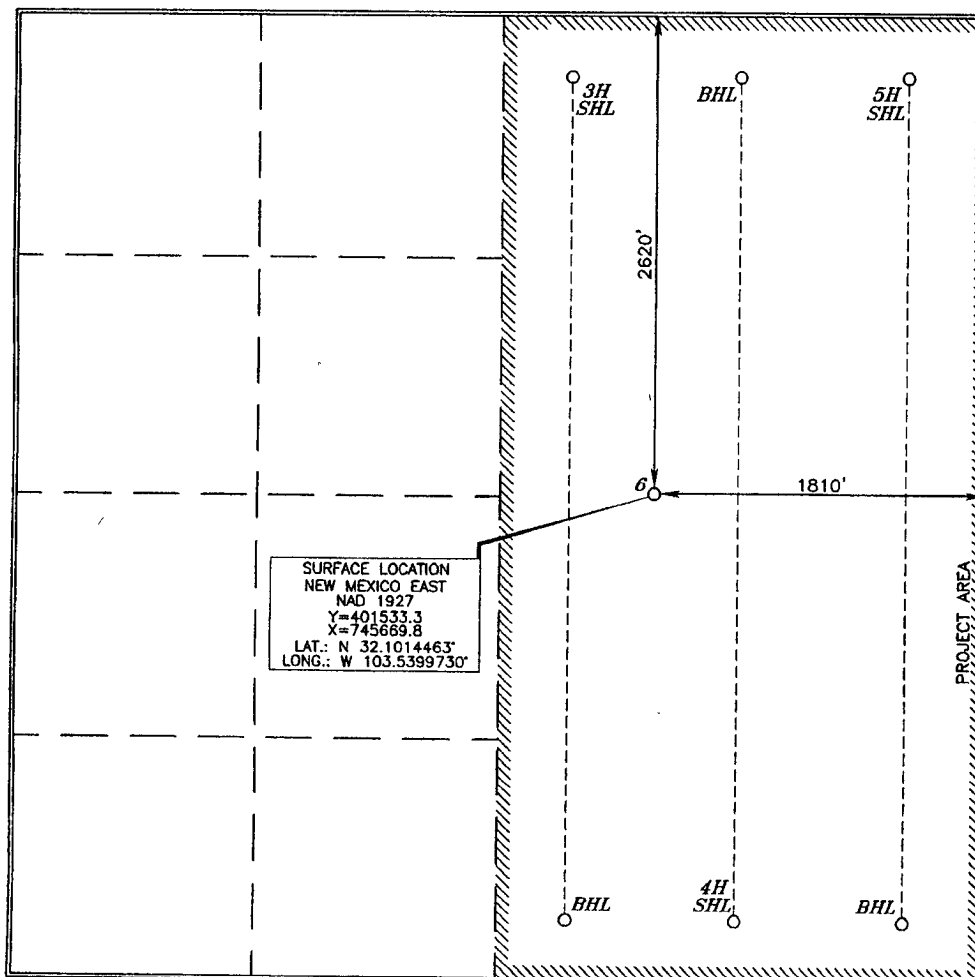
UL or lot no. G	Section 26	Township 25 SOUTH	Range 33 EAST, N.M.P.M.	Lot Idn	Feet from the 2620'	North/South line NORTH	Feet from the 1810'	East/West line EAST	County LEA
---------------------------	----------------------	-----------------------------	-----------------------------------	---------	-------------------------------	----------------------------------	-------------------------------	-------------------------------	----------------------

Bottom Hole Location If Different From Surface

UL or lot no.	Section	Township	Range	Lot Idn	Feet from the	North/South line	Feet from the	East/West line	County
---------------	---------	----------	-------	---------	---------------	------------------	---------------	----------------	--------

Dedicated Acres 320	Joint or Infill	Consolidation Code	Order No.
-------------------------------	-----------------	--------------------	-----------

No allowable will be assigned to this completion until all interests have been consolidated or a non-standard unit has been approved by the division.



OPERATOR CERTIFICATION

I hereby certify that the information contained herein is true and complete to the best of my knowledge and belief, and that this organization either owns a working interest or unleased mineral interest in the land including the proposed bottom hole location or has a right to drill this well at this location pursuant to a contract with an owner of such a mineral or working interest, or to a voluntary pooling agreement or a compulsory pooling order heretofore entered by the division.

Donny G. Glanton 3/4/2010
Signature Date
Donny G. Glanton
Printed Name

SURVEYOR CERTIFICATION

I hereby certify that the well location shown on this plat was plotted from field notes or actual surveys made by me or under my supervision, and that the same is true and correct to the best of my belief.

15079
MARCH 4, 2010
Date of Survey
Signature and Seal of Professional Surveyor
Terry J. Abel 3/4/2010
Certificate Number 15079

WO# 100304WL (KA)

Permit Information:

Well Name: Lomas Rojas 26 State No. 6

Location:

SL: 2620' FNL & 1810' FEL, Section 26, T-25-S, R-33-E, Lea Co., N.M.

BHL: 2620' FNL & 1810' FEL, Section 26, T-25-S, R-33-E, Lea Co., N.M.

Casing Program:

Casing	Setting Depth	Hole Size	Casing Size	Casing Weight	Casing Grade	Desired TOC
Surface	650'	14-3/4"	11-3/4	42#	H-40	Surface
Intermediate	4,000'	11"	8-5/8"	32#	J-55	Surface
	5,100'	11"	8-5/8"	32#	HCK-55	
Production	1,000'	7-7/8"	5-1/2"	17#	L-80	4600'
	11,000'	7-7/8"	5-1/2"	17#	N-80	

Cement Program:

Depth	No. Sacks	Wt. lb/gal	Yld Ft ³ /ft	Slurry Description
650'	450	14.8	1.32	Class C + 0.005 pps Static Free + 2% CaCl ₂ + 0.25 pps CelloFlake + 0.005 gps FP-6L
5,100'	1100	12.7	2.00	Lead: Class 'C' + 2.00% SMS + 1.50% R-3 + 0.25 lb/sk Cello Flake + 0.005 lb/sk Static Free
	200	14.8	1.32	Tail: Class 'C' + 0.25 lb/sk Cello Flake + 0.005 lb/sk Static Free
11,000'	575	11.8	2.37	Lead: 50:50:10 Class 'H' + 0.80% FL-52A + 0.30% ASA-301 + 0.30% SMS + 2.00% Salt (2.259 lb/sk) + 0.20% R-21 + 0.25 lb/sk Cello Flake
	625	14.2	1.30	Tail: 50:50:2 Class 'H' + 0.30% FL-52A + 0.20% CD-32 + 0.35% SMS + 5.00% Salt (2.454 lb/sk) + 0.45% R-3 + 0.005 lb/sk Static Free

Mud Program:

Depth	Type	Weight (ppg)	Viscosity	Water Loss
0 – 650'	Fresh - Gel	8.6-8.8	28-34	N/c
650' – 5,100'	Saturated Brine	10.0-10.2	28-34	N/c
5,100' – 11,000'	Cut Brine Wtr	8.4-8.6	28-34	N/c

KB: 3,366.0'
GL: 3,336.0'

API: 30-025-

