

## State of New Mexico

## DISTRICT I

1625 N. FRENCH DR., HOBBS, NM 88201

Energy, Minerals and Natural Resources Department

Form C-102

Revised October 12, 2005

Submit to Appropriate District Office

State Lease - 4 Copies

Fee Lease - 3 Copies

## DISTRICT II

1301 W. GRAND AVENUE, ARTESIA, NM 88211

## OIL CONSERVATION DIVISION

1220 SOUTH ST. FRANCIS DR.

Santa Fe, New Mexico 87505

## DISTRICT III

1000 Rio Brazos Rd., Aztec, NM 87410

## DISTRICT IV

1220 S. ST. FRANCIS DR., SANTA FE, NM 87505

## WELL LOCATION AND ACREAGE DEDICATION PLAT

☐ AMENDED REPORT

API Number 30-025- <b>39358</b>	Pool Code 44500	Pool Name MALAJAMAR; YESO, WEST
Property Code 302456	Property Name BC FEDERAL	Well Number 37
OGRID No. 229137	Operator Name COG OPERATING, LLC	Elevation 3934'

## Surface Location

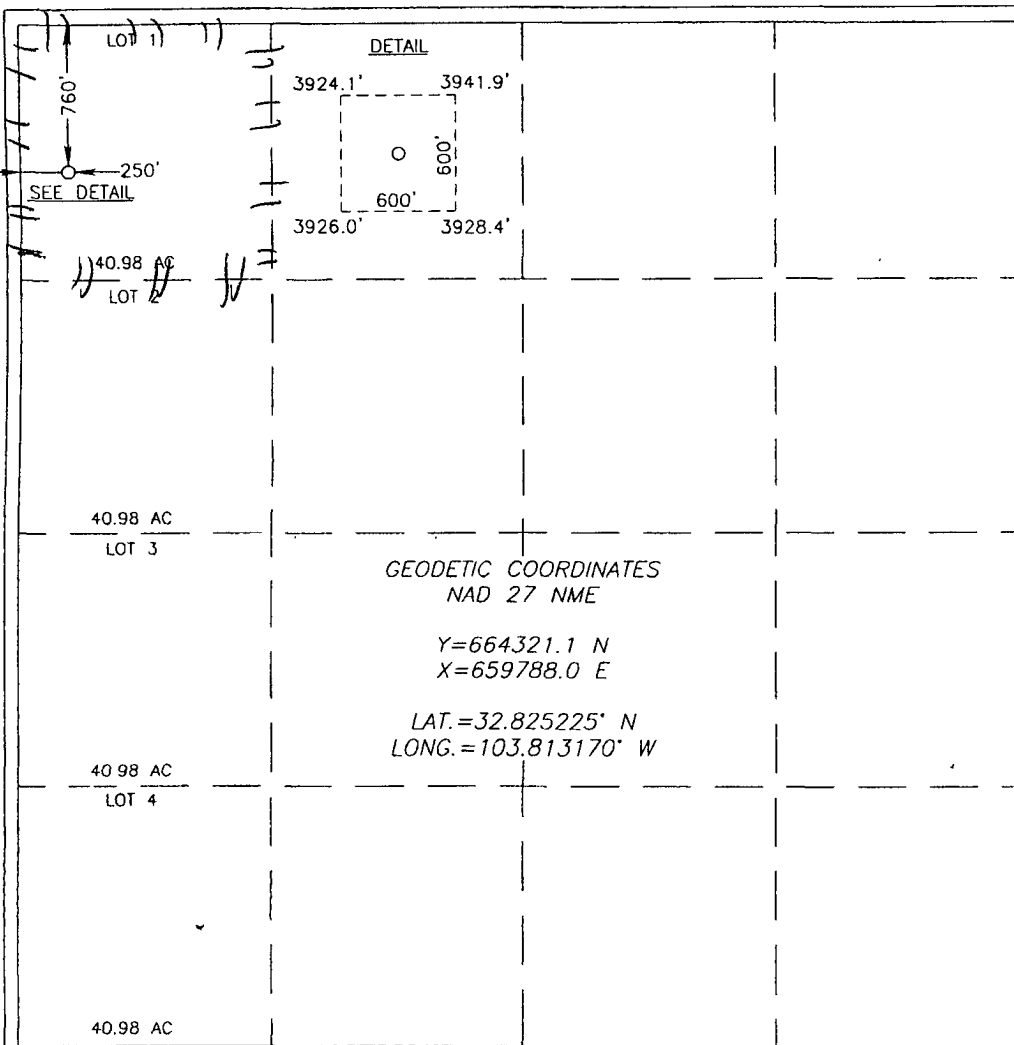
UL or lot No.	Section	Township	Range	Lot Idn	Feet from the	North/South line	Feet from the	East/West line	County
1	19	17-S	32-E		760	NORTH	250	WEST	LEA

## Bottom Hole Location If Different From Surface

UL or lot No.	Section	Township	Range	Lot Idn	Feet from the	North/South line	Feet from the	East/West line	County

Dedicated Acres	Joint or Infill	Consolidation Code	Order No.
40			<b>NSL-5969</b>

NO ALLOWABLE WILL BE ASSIGNED TO THIS COMPLETION UNTIL ALL INTERESTS HAVE BEEN CONSOLIDATED  
OR A NON-STANDARD UNIT HAS BEEN APPROVED BY THE DIVISION



## OPERATOR CERTIFICATION

I hereby certify that the information herein is true and complete to the best of my knowledge and belief, and that this organization either owns a working interest or unleased mineral interest in the land including the proposed bottom hole location or has a right to drill this well at this location pursuant to a contract with an owner of such mineral or working interest, or to a voluntary pooling agreement or a compulsory pooling order heretofore entered by the division.

*[Signature]* 10/28/2008  
Signature Date  
Robyn Odom  
Printed Name

## SURVEYOR CERTIFICATION

I hereby certify that the well location shown on this plat was plotted from field notes of actual surveys made by me or under my supervision, and that the same is true and correct to the best of my belief.

*[Signature]* 10/28/2008  
Date Surveyed  
Signature & Seal  
Professional Surveyor  
RONALD J. EIDSON  
NEW MEXICO  
3239  
SURVEYOR

Certificate No. GARY EIDSON 12641  
RONALD J. EIDSON 3239

ch