

DISTRICT I  
1625 N. FRENCH DR., HOBBS, NM 88240

DISTRICT II  
1301 W. GRAND AVENUE, ARTESIA, NM 88210

DISTRICT III  
1000 Rio Brazos Rd., Aztec, NM 87410

RECEIVED

NOV 26 2008

HOBBS (11)

State of New Mexico  
Energy, Minerals and Natural Resources Department

OIL CONSERVATION DIVISION

1330 SOUTH ST. FRANCIS DR.  
Santa Fe, New Mexico 87505

Form C-102  
Revised October 12, 2005  
Submit to Appropriate District Office  
State Lease - 4 Copies  
Fee Lease - 3 Copies

DISTRICT IV  
1330 S. ST. FRANCIS DR., SANTA FE, NM 87505

WELL LOCATION AND ACREAGE DEDICATION PLAT

☐ AMENDED REPORT

|                            |   |                                      |
|----------------------------|---|--------------------------------------|
| API Number<br>30-025-39242 | Pool Code<br>9120                         | Pool Name<br>Caprock Upper Penn East |
| Property Code<br>37458     | Property Name<br>MOORE COWBELL "23" STATE | Well Number<br>1                     |
| OGRID No.<br>249099        | Operator Name<br>CAZA OPERATING, LLC      | Elevation<br>4335'                   |

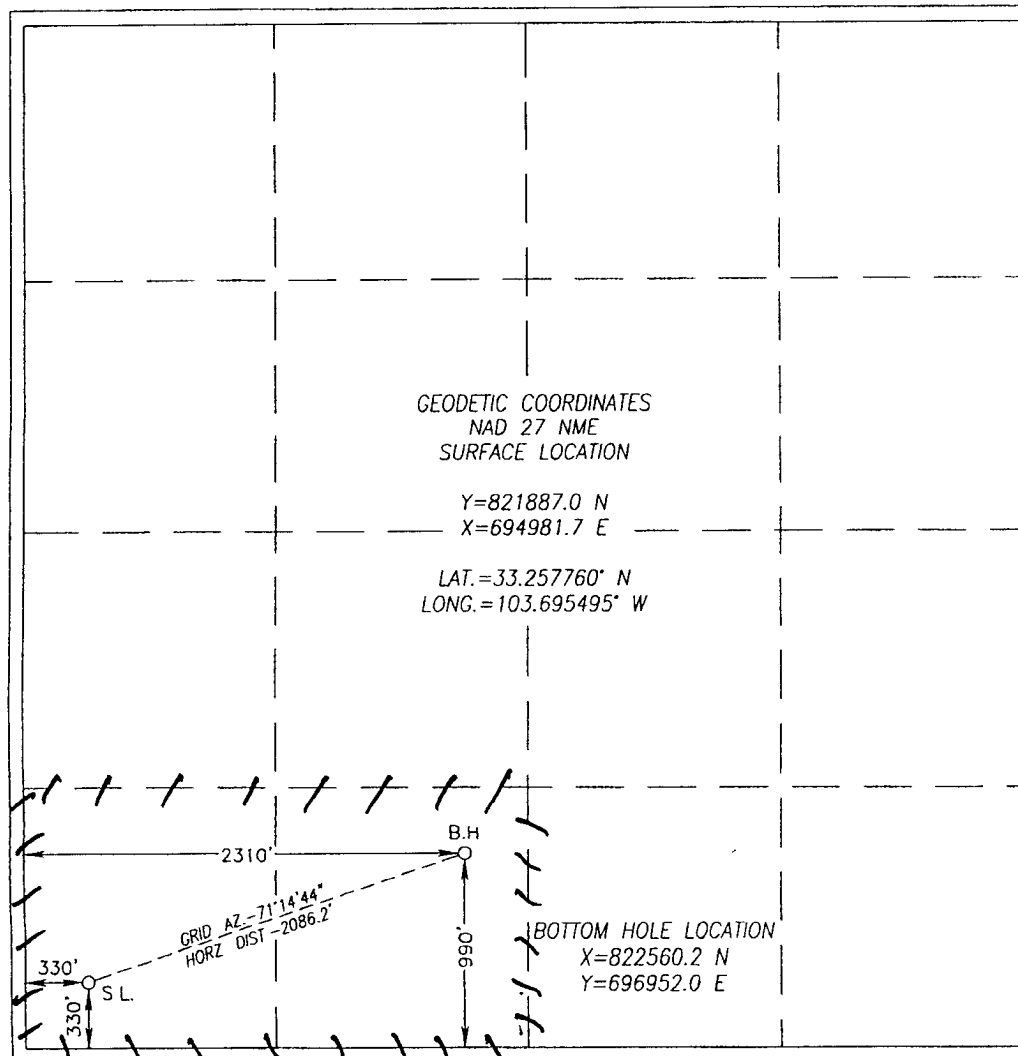
Surface Location

| UL or lot No. | Section | Township | Range | Lot Idn | Feet from the | North/South line | Feet from the | East/West line | County |
|---------------|---------|----------|-------|---------|---------------|------------------|---------------|----------------|--------|
| M             | 23      | 12-S     | 32-E  |         | 330           | SOUTH            | 330           | WEST           | LEA    |

Bottom Hole Location If Different From Surface

| UL or lot No.   | Section         | Township           | Range     | Lot Idn | Feet from the | North/South line | Feet from the | East/West line | County |
|-----------------|-----------------|--------------------|-----------|---------|---------------|------------------|---------------|----------------|--------|
| N               | 23              | 12-S               | 32-E      |         | 990           | SOUTH            | 2310          | WEST           | LEA    |
| Dedicated Acres | Joint or Infill | Consolidation Code | Order No. |         |               |                  |               |                |        |

NO ALLOWABLE WILL BE ASSIGNED TO THIS COMPLETION UNTIL ALL INTERESTS HAVE BEEN CONSOLIDATED  
OR A NON-STANDARD UNIT HAS BEEN APPROVED BY THE DIVISION



OPERATOR CERTIFICATION

I hereby certify that the information herein is true and complete to the best of my knowledge and belief, and that this organization either owns a working interest or unleased mineral interest in the land including the proposed bottom hole location or has a right to drill this well at this location pursuant to a contract with an owner of such mineral or working interest, or to a voluntary pooling agreement or a compulsory pooling order heretofore entered by the division.

*Richard L. Wright* 11/30/08  
Signature Date

Richard L. Wright  
Printed Name

SURVEYOR CERTIFICATION

I hereby certify that the well location shown on this plat was plotted from field notes of actual surveys made by me or under my supervision, and that the same is true and correct to the best of my belief.

*GARY G. EIDSON* 11/4/08  
Date Surveyed  
Signature & Seal of Professional Surveyor  
GARY G. EIDSON  
12841  
RONALD J. EIDSON  
3239

Certificate No. GARY G. EIDSON 12841  
RONALD J. EIDSON 3239

ch