

1625 N. FRENCH DR., HOBBS, NM 88240

DISTRICT II

1301 W. GRAND AVENUE, ARTESIA, NM 88213

DISTRICT III

1000 Rio Brazos Rd., Aztec, NM 87410

DISTRICT IV

1220 S. ST. FRANCIS DR., SANTA FE, NM 87505

RECEIVED

OCT 13 2009

HOBBSOFTL

State of New Mexico

Energy, Minerals and Natural Resources Department.

JUL 24 2009

Form C-102

Revised October 12, 2005

Submit to Appropriate District Office

State Lease - 4 Copies

Fee Lease - 3 Copies

CONSERVATION DIVISION

1220 SOUTH ST. FRANCIS DR.

Santa Fe, New Mexico 87505

WELL LOCATION AND ACREAGE DEDICATION PLAT

☐ AMENDED REPORT

API Number 30-025-39538	Pool Code 41440	Pool Name LUSK; BONE SPRING
Property Code 37543	Property Name S L DEEP FEDERAL	Well Number 4H
OGRID No. 14049	Operator Name MARBOB ENERGY CORPORATION	Elevation 3527'

Surface Location

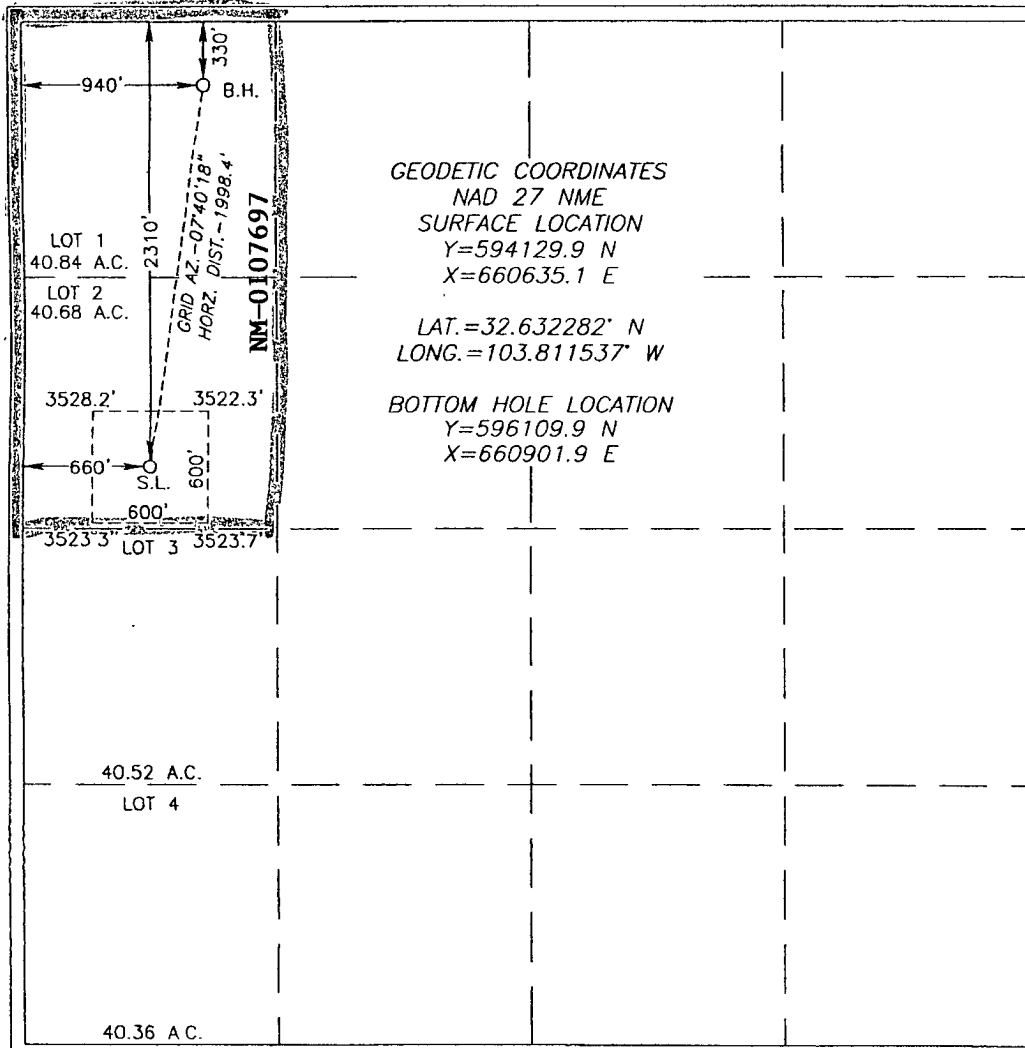
UL or lot No.	Section	Township	Range	Lot Idn	Feet from the	North/South line	Feet from the	East/West line	County
2	30	19-S	32-E		2310	NORTH	660	WEST	LEA

Bottom Hole Location If Different From Surface

UL or lot No.	Section	Township	Range	Lot Idn	Feet from the	North/South line	Feet from the	East/West line	County
1	30	19-S	32-E		330	NORTH	940	WEST	LEA

Dedicated Acres	Joint or Infill	Consolidation Code	Order No.
80			

NO ALLOWABLE WILL BE ASSIGNED TO THIS COMPLETION UNTIL ALL INTERESTS HAVE BEEN CONSOLIDATED
OR A NON-STANDARD UNIT HAS BEEN APPROVED BY THE DIVISION



OPERATOR CERTIFICATION

I hereby certify that the information herein is true and complete to the best of my knowledge and belief, and that this organization either owns a working interest or unleased mineral interest in the land including the proposed bottom hole location or has a right to drill this well at this location pursuant to a contract with an owner of such mineral or working interest, or to a voluntary pooling agreement or a compulsory pooling order heretofore entered by the division.


Nancy T. Ornel 8/5/09
Signature Date

Nancy T. Agnew
Printed Name

SURVEYOR CERTIFICATION

I hereby certify that the well location shown on this plat was plotted from field notes of actual surveys made by me or under my supervision, and that the same is true and correct to the best of my belief.

RONALD J. EIDSON
JULY 24 2009

Date Surveyed: _____
Signature & Seal  _____
Professional Surveyor _____

Ronald E. Eidsen

Certificate No.	GARY EIDSON	12641
	RONALD J. EIDSON	3239