

# RECEIVED

DEC 09 2009

Form C-102  
Revised October 12, 2005

DISTRICT I  
1625 N. French Dr., Hobbs, NM 88240

DISTRICT II  
1301 W. Grand Avenue, Artesia, NM 88210

DISTRICT III  
1000 Rio Brazos Rd., Aztec, NM 87410

DISTRICT IV  
1220 S. St. Francis Dr., Santa Fe, NM 87505

State of New Mexico  
Energy, Minerals and Natural Resources Department

## OIL CONSERVATION DIVISION

1220 South St. Francis Dr.  
Santa Fe, New Mexico 87505

HOBBSDO

Submit to Appropriate District Office  
State Lease - 4 Copies  
Fee Lease - 3 Copies

### WELL LOCATION AND ACREAGE DEDICATION PLAT

☐ AMENDED REPORT

API Number <b>30-025-3959</b>	Pool Code <b>85850</b>	Pool Name <b>Talco</b>	Strawn <b>&lt;GAS&gt;</b>
Property Code <b>34832</b>	Property Name <b>ARENA ROJA FEDERAL</b>		Well Number <b>13</b>
OGRID No. <b>6137</b>	Operator Name <b>DEVON ENERGY PRODUCTION COMPANY LP</b>		Elevation <b>3125'</b>

#### Surface Location

UL or lot No.	Section	Township	Range	Lot Idn	Feet from the	North/South line	Feet from the	East/West line	County
M	10	26 S	35 E		710	SOUTH	660	WEST	LEA

#### Bottom Hole Location If Different From Surface

UL or lot No.	Section	Township	Range	Lot Idn	Feet from the	North/South line	Feet from the	East/West line	County
Dedicated Acres 320	Joint or Infill	Consolidation Code	Order No.						

NO ALLOWABLE WILL BE ASSIGNED TO THIS COMPLETION UNTIL ALL INTERESTS HAVE BEEN CONSOLIDATED  
OR A NON-STANDARD UNIT HAS BEEN APPROVED BY THE DIVISION

#### OPERATOR CERTIFICATION

I hereby certify that the information contained herein is true and complete to the best of my knowledge and belief, and that this organization either owns a working interest or unleased mineral interest in the land including the proposed bottom hole location pursuant to a contract with an owner of such a mineral or working interest, or to a voluntary pooling agreement or a compulsory pooling order heretofore entered by the division.

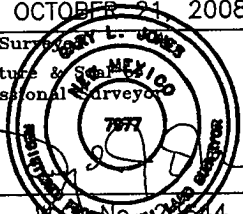
 7/22/09  
Signature Date

Norvella Adams  
Printed Name

#### SURVEYOR CERTIFICATION

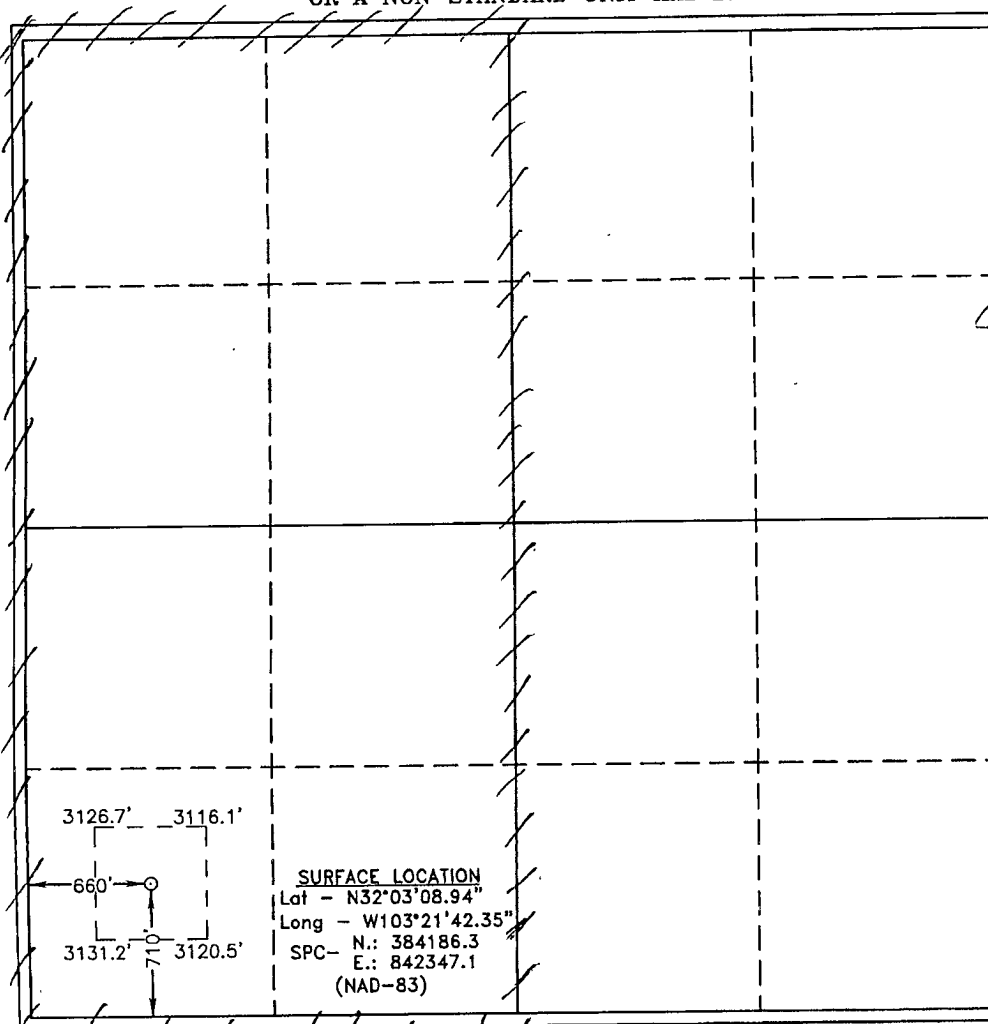
I hereby certify that the well location shown on this plat was plotted from field notes of actual surveys made by me or under my supervision, and that the same is true and correct to the best of my belief.

OCTOBER 21 2008

Date Surveyed  
Signature & Seal of Professional Surveyor  


Certificate No. Gary L. Jones 7977

BASIN SURVEYS



**SURFACE LOCATION**  
Lat - N32°03'08.94"  
Long - W103°21'42.35"  
SPC- N.: 384186.3  
E.: 842347.1  
(NAD-83)

dm