

DISTRICT I
1825 N. FRENCH DR., HOBBS, NM 88240

State of New Mexico
Energy, Minerals and Natural Resources Department

DISTRICT II
1301 W. GRAND AVENUE, ARTESIA, NM 88210

DISTRICT III
1000 Rio Brazos Rd., Aztec, NM 87410

DISTRICT IV
1220 S. ST. FRANCIS DR., SANTA FE, NM 87505

OIL CONSERVATION DIVISION
1220 SOUTH ST. FRANCIS DR.
Santa Fe, New Mexico 87505

Form C-102
Revised JUNE 10, 2003
Submit to Appropriate District Office
State Lease - 4 Copies
Fee Lease - 3 Copies

WELL LOCATION AND ACREAGE DEDICATION PLAT

☐ AMENDED REPORT

API Number 30-025- 38875	Pool Code 33820	Pool Name Jalmat (T-Y-7 Rvrs)
Property Code 25191	Property Name JALMAT Field Yates Sand Unit	Well Number 222
OGRID No. 184860	Operator Name MELROSE OPERATING COMPANY	Elevation 3587'

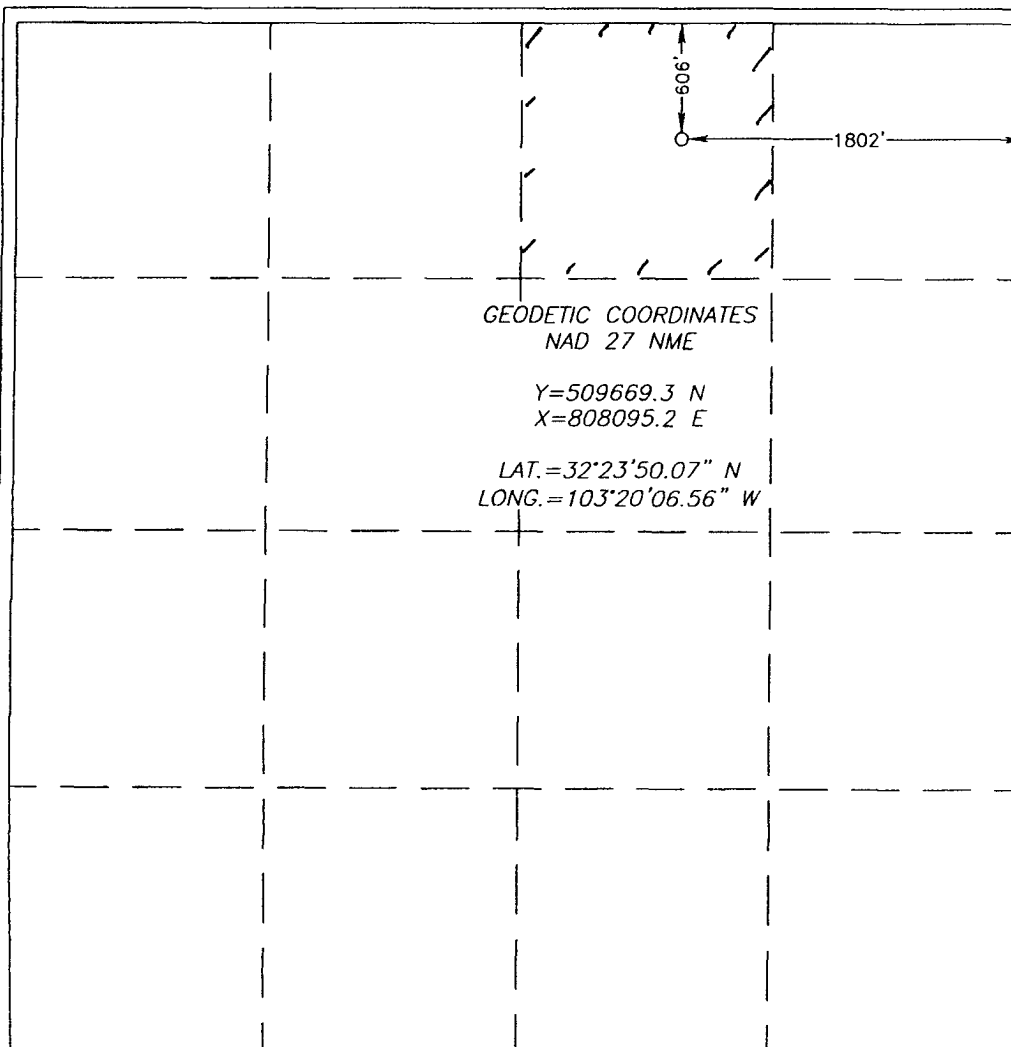
Surface Location

UL or lot No. B	Section 14	Township 22-S	Range 35-E	Lot Idn	Feet from the 606	North/South line NORTH	Feet from the 1802	East/West line EAST	County LEA
--------------------	---------------	------------------	---------------	---------	----------------------	---------------------------	-----------------------	------------------------	---------------

Bottom Hole Location If Different From Surface

UL or lot No.	Section	Township	Range	Lot Idn	Feet from the	North/South line	Feet from the	East/West line	County
Dedicated Acres 40	Joint or Infill	Consolidation Code	Order No.	Waterflood Unit					

NO ALLOWABLE WILL BE ASSIGNED TO THIS COMPLETION UNTIL ALL INTERESTS HAVE BEEN CONSOLIDATED
OR A NON-STANDARD UNIT HAS BEEN APPROVED BY THE DIVISION



OPERATOR CERTIFICATION

I hereby certify the the information
contained herein is true and complete to the
best of my knowledge and belief

Ann E. Ritchie
Signature

Ann E. Ritchie
Printed Name

Regulatory Agent
Title

4-11-08
Date

SURVEYOR CERTIFICATION

I hereby certify that the well location shown
on this plat was plotted from field notes of
actual surveys made by me or under my
supervision, and that the same is true and
correct to the best of my belief

JANUARY 23, 2006
Date Surveyed
Signature & Seal of
Professional Surveyor
GARY G. EIDSON
12641
2/2/06

Certificate No. GARY EIDSON 12641