

State of New Mexico

DISTRICT I

1625 N. FRENCH DR., HOBBS, NM 88240

Energy, Minerals and Natural Resources Department

Form C-102

Revised October 12, 2005

Submit to Appropriate District Office

State Lease - 4 Copies

Fee Lease - 3 Copies

DISTRICT II

1301 W. GRAND AVENUE, ARTESIA, NM 88210

RECEIVED

OIL CONSERVATION DIVISION

JUL 24 2009

1220 SOUTH ST. FRANCIS DR.
Santa Fe, New Mexico 87505

DISTRICT III

1000 Rio Brazos Rd., Aztec, NM 87410

HOBBSOCD

DISTRICT IV

1220 S. ST. FRANCIS DR., SANTA FE, NM 87505

WELL LOCATION AND ACREAGE DEDICATION PLAT

☐ AMENDED REPORT

API Number 30-025- 39475	Pool Code 44500	Pool Name MALJAMAR; YESO, WEST
Property Code 302498	Property Name GC FEDERAL	Well Number 62
OGRID No. 229137	Operator Name COG OPERATING, LLC	Elevation 3976'

Surface Location

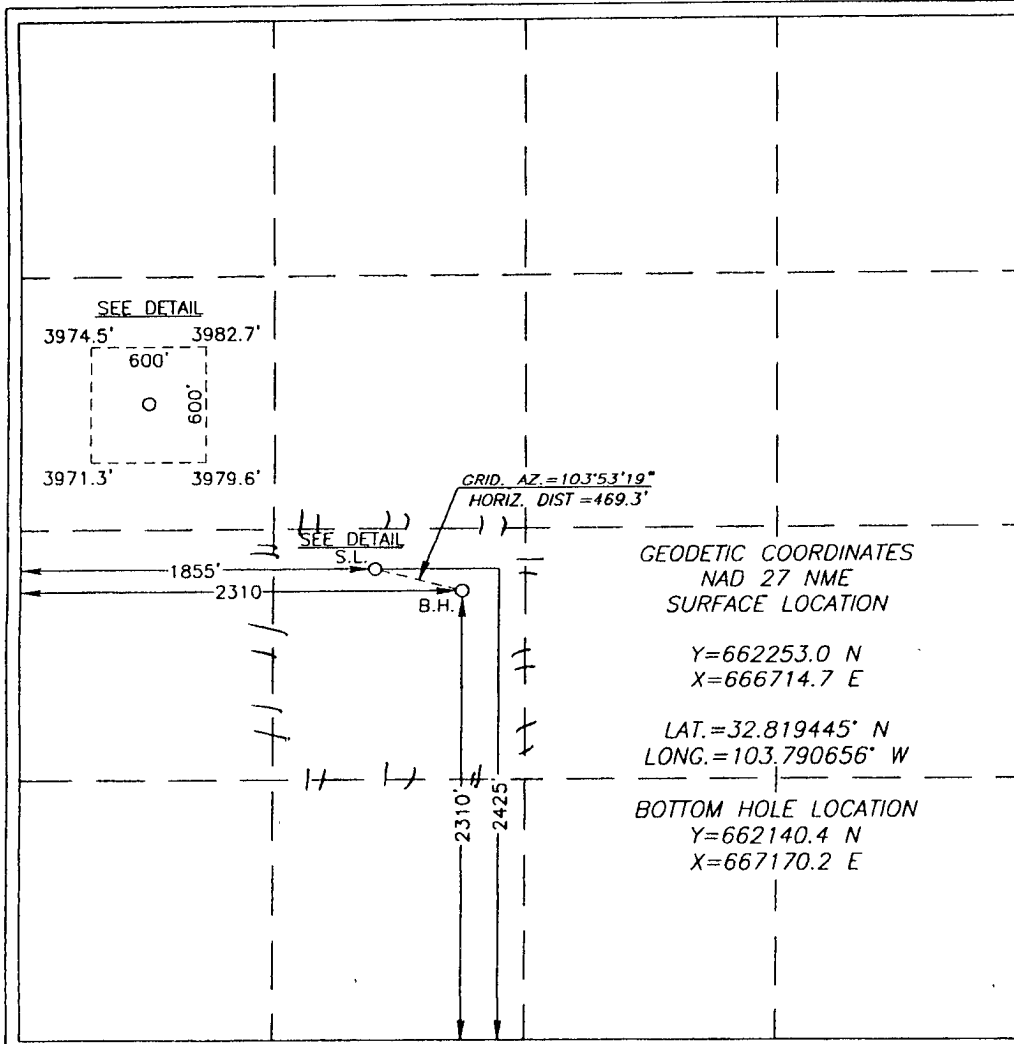
UL or lot No.	Section	Township	Range	Lot Idn	Feet from the	North/South line	Feet from the	East/West line	County
K	20	17-S	32-E		2425	SOUTH	1855	WEST	LEA

Bottom Hole Location If Different From Surface

UL or lot No.	Section	Township	Range	Lot Idn	Feet from the	North/South line	Feet from the	East/West line	County
K	20	17-S	32-E		2310	SOUTH	2310	WEST	LEA

Dedicated Acres 40	Joint or Infill	Consolidation Code	Order No. NSL-6024 SURFACE ONLY
-----------------------	-----------------	--------------------	---

NO ALLOWABLE WILL BE ASSIGNED TO THIS COMPLETION UNTIL ALL INTERESTS HAVE BEEN CONSOLIDATED
OR A NON-STANDARD UNIT HAS BEEN APPROVED BY THE DIVISION



GEODETTIC COORDINATES
NAD 27 NME
SURFACE LOCATION

Y=662253.0 N
X=666714.7 E

LAT.=32.819445° N
LONG.=103.790656° W

BOTTOM HOLE LOCATION
Y=662140.4 N
X=667170.2 E

OPERATOR CERTIFICATION

I hereby certify that the information herein is true and complete to the best of my knowledge and belief, and that this organization either owns a working interest or unleased mineral interest in the land including the proposed bottom hole location or has a right to drill this well at this location pursuant to a contract with an owner of such mineral or working interest, or to a voluntary pooling agreement or a compulsory pooling order heretofore entered by the division.

[Signature] 3/23/2009
Signature Date

Robyn Odom
Printed Name

SURVEYOR CERTIFICATION

I hereby certify that the well location shown on this plat was plotted from field notes of actual surveys made by me or under my supervision, and that the same is true and correct to the best of my belief.

[Signature] FEBRUARY 28, 2009
Date Surveyed REV. 3/17/09 AR
Signature & Seal of Professional Surveyor

Certificate No. GARY EIDSON 12641
RONALD J. EIDSON 3239

Ch