

DISTRICT I
1853 N. FRENCH DR., HOBBS, NM 88240

DISTRICT II
1801 W. GRAND AVENUE, ARTESIA, NM 88210

DISTRICT III
1000 Rio Brazos Rd., Aztec, NM 87410

DISTRICT IV
1220 S. ST. FRANCIS DR., SANTA FE, NM 87605

State of New Mexico
Energy, Minerals and Natural Resources Department

OIL CONSERVATION DIVISION
1220 SOUTH ST. FRANCIS DR.
Santa Fe, New Mexico 87505

Form C-102
Revised October 12, 2005
Submit to Appropriate District Office
State LEase - 4 Copies
Fee LEase - 3 Copies

WELL LOCATION AND ACREAGE DEDICATION PLAT

☐ AMENDED REPORT

| | | |
|-------------------------------------|---|----------------------------------|
| API Number 30-025 - 38925 | Pool Code 33820 | Pool Name Jalmat (T-Y-7 Rvrs) |
| Property Code 25191 | Property Name JALMAT FIELD YATES SAND UNIT | Well Number 180 250 |
| OGRID No. 184860 | Operator Name MELROSE OPERATING COMPANY | Elevation 3585' |

Surface Location

| UL or lot No. | Section | Township | Range | Lot Idn | Feet from the | North/South line | Feet from the | East/West line | County |
|---------------|---------|----------|-------|---------|---------------|------------------|---------------|----------------|--------|
| C | 13 | 22-S | 35-E | | 625 | NORTH | 1853 | WEST | LEA |

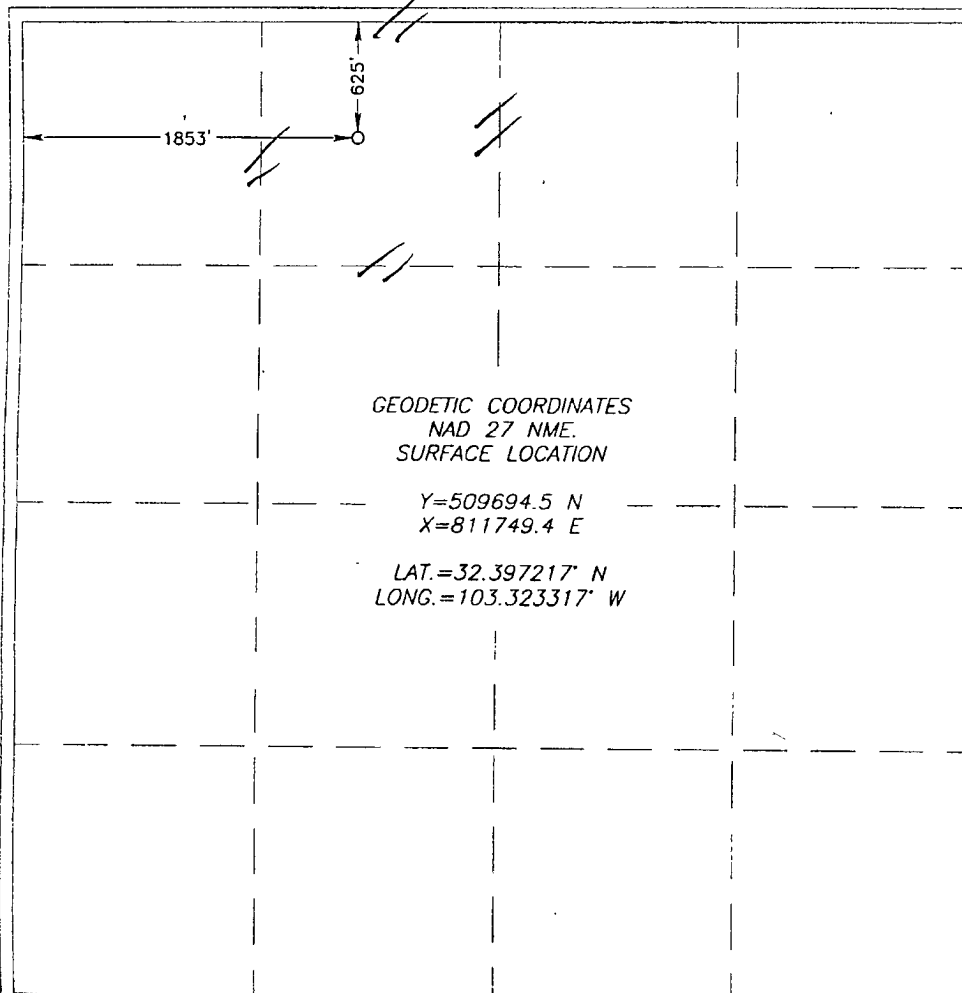
Bottom Hole Location If Different From Surface

| UL or lot No. | Section | Township | Range | Lot Idn | Feet from the | North/South line | Feet from the | East/West line | County |
|---------------|---------|----------|-------|---------|---------------|------------------|---------------|----------------|--------|
| | | | | | | | | | |

| Dedicated Acres | Joint or Infill | Consolidation Code | Order No. |
|-----------------|-----------------|--------------------|-----------|
| 40 | | | |

Waterflood Unit

NO ALLOWABLE WILL BE ASSIGNED TO THIS COMPLETION UNTIL ALL INTERESTS HAVE BEEN CONSOLIDATED
OR A NON-STANDARD UNIT HAS BEEN APPROVED BY THE DIVISION



OPERATOR CERTIFICATION

I hereby certify that the information herein is true and complete to the best of my knowledge and belief, and that this organization either owns a working interest or unleased mineral interest in the land including the proposed bottom hole location or has a right to drill this well at this location pursuant to a contract with an owner of such mineral or working interest, or to a voluntary pooling agreement or a compulsory pooling order heretofore entered by the division.

Ann E. Ritchie 5-6-08
Signature Date

Ann E. Ritchie
Printed Name

SURVEYOR CERTIFICATION

I hereby certify that the well location shown on this plat was plotted from field notes of actual surveys made by me or under my supervision, and that the same is true and correct to the best of my belief.

Date Surveyed: **APR 25, 2008**
Signature & Seal of Professional Surveyor: *Ronald J. Eidson*
Professional Surveyor: **3239**
RECEIVED: **APR 25, 2008**
OFFICE OF THE ATTORNEY GENERAL
DIVISION OF LANDS & MINES

Certificate No. **GARY C. EIDSON 12841**
RONALD J. EIDSON 3180

dm