

RECEIVED

DISTRICT I
1625 N. FRENCH DR., HOBBS, NM 88240

MAY 22 2009

State of New Mexico
Energy, Minerals and Natural Resources Department

DISTRICT II
1301 W. GRAND AVENUE, ARTESIA, NM 88210

HOBBSOCD

OIL CONSERVATION DIVISION

DISTRICT III
1000 RIO BRAZOS RD., AZTEC, NM 87410

12310 SOUTH ST. FRANCIS DR.
Santa Fe, New Mexico 871650

Form C-102

Revised October 12, 2005

Submit to Appropriate District Office

State Lease - 4 Copies

Fee Lease - 3 Copies

DISTRICT IV
12310 S. ST. FRANCIS DR., SANTA FE, NM 871650

WELL LOCATION AND ACREAGE DEDICATION PLAT

☐ AMENDED REPORT

API Number 30-025-39411	Pool Code 43329	Pool Name Maljamar; Grayburg-San Andres
Property Code 306387	Property Name GRACE MITCHELL B FEDERAL	Well Number 10
OGRID No. 013837	Operator Name MACK ENERGY CORPORATION	Elevation 4098'

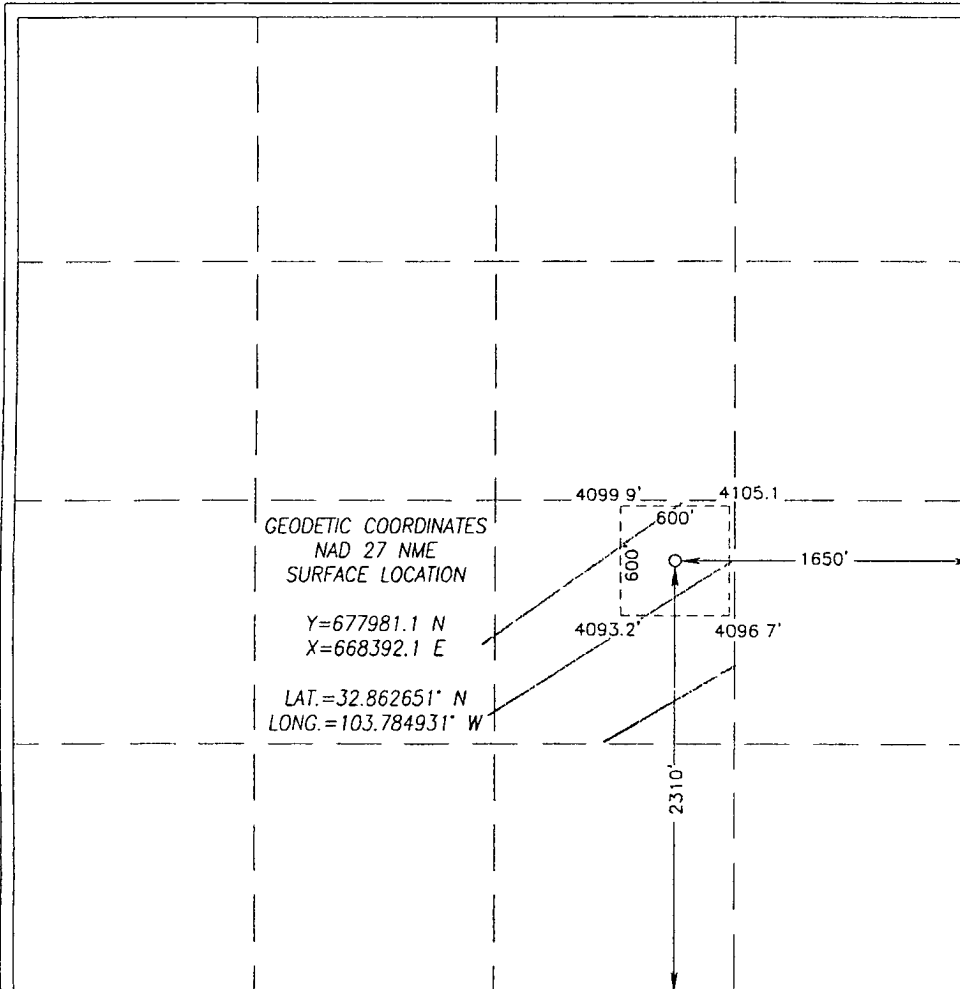
Surface Location

UL or lot No. J	Section 5	Township 17-S	Range 32-E	Lot Idn	Feet from the 2310	North/South line SOUTH	Feet from the 1650	East/West line EAST	County LEA
--------------------	--------------	------------------	---------------	---------	-----------------------	---------------------------	-----------------------	------------------------	---------------

Bottom Hole Location If Different From Surface

UL or lot No.	Section	Township	Range	Lot Idn	Feet from the	North/South line	Feet from the	East/West line	County
Dedicated Acres 40		Joint or Infill	Consolidation Code	Order No.					

NO ALLOWABLE WILL BE ASSIGNED TO THIS COMPLETION UNTIL ALL INTERESTS HAVE BEEN CONSOLIDATED
OR A NON-STANDARD UNIT HAS BEEN APPROVED BY THE DIVISION



OPERATOR CERTIFICATION

I hereby certify that the information herein is true and complete to the best of my knowledge and belief, and that this organization either owns a working interest or unleased mineral interest in the land including the proposed bottom hole location or has a right to drill this well at this location pursuant to a contract with an owner of such mineral or working interest, or to a voluntary pooling agreement or a compulsory pooling order heretofore entered by the division.

Jerry W. Sherrell 3-24-09
Signature Date

Jerry W. Sherrell
Printed Name

SURVEYOR CERTIFICATION

I hereby certify that the well location shown on this plat was plotted from field notes of actual surveys made by me or under my supervision, and that the same is true and correct to the best of my belief.

FEBRUARY 9, 2009

Date Surveyed
Signature & Seal of Professional Surveyor

Ronald J. Eidson 02/20/09
09.11.0101

Certificate No. GARY G. EIDSON 12841
RONALD J. EIDSON 3239

Ch