

RECEIVED

DISTRICT I  
1625 N. FRENCH DR., HOBBS, NM 88240

MAY 22 2009

State of New Mexico  
Energy, Minerals and Natural Resources Department

Form C-102

DISTRICT II  
1301 W. GRAND AVENUE, ARTESIA, NM 88210

HOBBSOCD

OIL CONSERVATION DIVISION

11650 SOUTH ST. FRANCIS DR.  
Santa Fe, New Mexico 871650

Revised October 12, 2005  
Submit to Appropriate District Office  
State Lease - 4 Copies  
Fee Lease - 3 Copies

DISTRICT III  
1000 RIO BRAZOS RD., AZTEC, NM 87410

DISTRICT IV  
11650 S. ST. FRANCIS DR., SANTA FE, NM 871650

WELL LOCATION AND ACREAGE DEDICATION PLAT

☐ AMENDED REPORT

API Number <b>30-D25-39413</b>	Pool Code 43329	Pool Name Maljamar; Grayburg-San Andres
Property Code <b>306387</b>	Property Name GRACE MITCHELL B FEDERAL	Well Number 12
OGRID No. 013837	Operator Name MACK ENERGY CORPORATION	Elevation 4117'

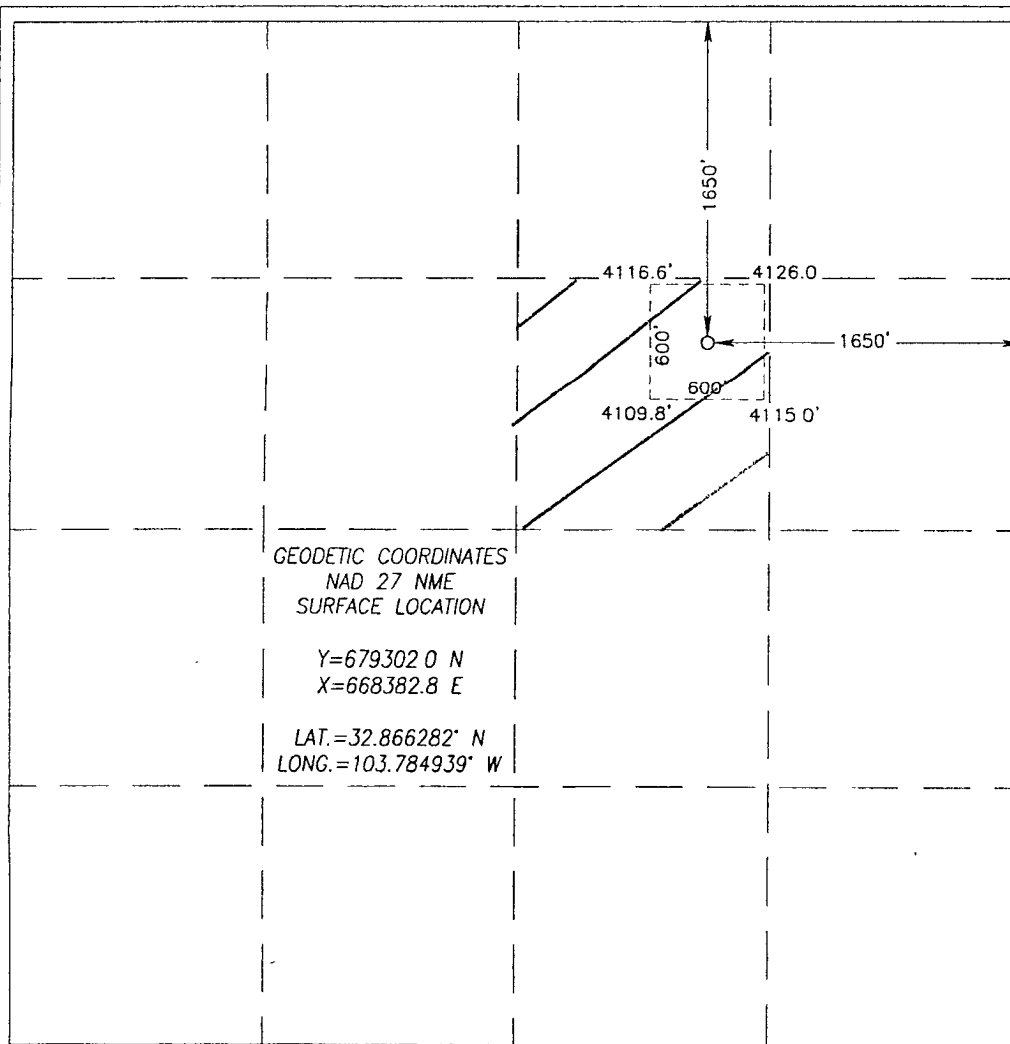
Surface Location

UL or lot No.	Section	Township	Range	Lot Idn	Feet from the	North/South line	Feet from the	East/West line	County
G	5	17-S	32-E		1650	NORTH	1650	EAST	LEA

Bottom Hole Location If Different From Surface

UL or lot No.	Section	Township	Range	Lot Idn	Feet from the	North/South line	Feet from the	East/West line	County
Dedicated Acres 40	Joint or Infill	Consolidation Code	Order No.						

NO ALLOWABLE WILL BE ASSIGNED TO THIS COMPLETION UNTIL ALL INTERESTS HAVE BEEN CONSOLIDATED  
OR A NON-STANDARD UNIT HAS BEEN APPROVED BY THE DIVISION



OPERATOR CERTIFICATION

I hereby certify that the information herein is true and complete to the best of my knowledge and belief, and that this organization either owns a working interest or unleased mineral interest in the land including the proposed bottom hole location or has a right to drill this well at this location pursuant to a contract with an owner of such mineral or working interest, or to a voluntary pooling agreement or a compulsory pooling order heretofore entered by the division.

*Jerry W. Sherrell* 3-24-09  
Signature Date

Jerry W. Sherrell  
Printed Name

SURVEYOR CERTIFICATION

I hereby certify that the well location shown on this plat was plotted from field notes of actual surveys made by me or under my supervision, and that the same is true and correct to the best of my belief.

DATE SURVEYED  
FEBRUARY 9, 2009

Signature & Seal of Professional Surveyor  
DSS

*Ronald J. Eidson* 02/24/09  
09:11:0103

Certificate No. GARY G. EIDSON 12641  
RONALD J. EIDSON 3239

ch