

DISTRICT I
1625 1/2 French Dr., Hobbs, NM 88240

DISTRICT II
1901 W. Grand Avenue, Artesia, NM 88210

DISTRICT III
1000 Rio Brazos Rd., Artec, NM 87410

DISTRICT IV
1220 S. St. Francis Dr., Santa Fe, NM 87505

State of New Mexico

Minerals & Natural Resources Department

RECEIVED

OIL CONSERVATION DIVISION

MAY 27 2009 220 South St. Frances Dr.

HOBBSOCD

Santa Fe, NM 87505

Form C-102
Revised October 12, 2005
Submit to Appropriate District Office
State Lease - 4 Copies
Fee Lease - 3 Copies

AMENDED REPORT

WELL LOCATION AND ACREAGE DEDICATION PLAT

API Number 30-025- 3943L	Pool Code 43329	Pool Name Maljamar; Grayburg-San Andres
Property Code 31422	Property Name MCA UNIT	Well Number 477
OGRID No. 217817	Operator Name CONOCOPHILLIPS	Elevation 3974'

Surface Location

UL or lot No.	Section	Township	Range	Lot Idn	Feet from the	North/South line	Feet from the	East/West line	County
K	27	17 S	32 E		2570	SOUTH	1920	WEST	LEA

Bottom Hole Location If Different From Surface

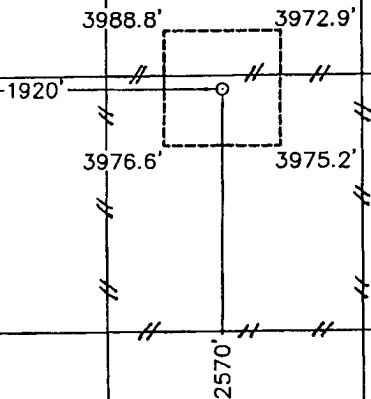
UL or lot No.	Section	Township	Range	Lot Idn	Feet from the	North/South line	Feet from the	East/West line	County
Dedicated Acres 40	Joint or Infill	Consolidation Code	Order No.						

NO ALLOWABLE WILL BE ASSIGNED TO THIS COMPLETION UNTIL ALL INTERESTS HAVE BEEN CONSOLIDATED OR A NON-STANDARD UNIT HAS BEEN APPROVED BY THE DIVISION

NOTE:

1) Plane Coordinates shown hereon are Transverse Mercator Grid and Conform to the "New Mexico Coordinate System", New Mexico East Zone, North American Datum of 1927. Distances shown hereon are mean horizontal surface values.

Plane Coordinate
X = 677,366.5
Y = 657,153.6



OPERATOR CERTIFICATION

I hereby certify the information contained herein is true and complete to the best of my knowledge and belief, and that this organization either owns a working interest or unleased mineral interest in the land including the proposed bottom hole location or has a right to drill this well at this location pursuant to a contract with an owner of such a mineral or working interest, or to a voluntary pooling agreement or a compulsory pooling order heretofore entered by the division.

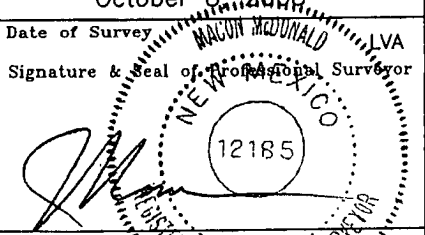
Jalyn N. Fiske
Signature Date
Jalyn N. Fiske
Printed Name

SURVEYOR CERTIFICATION

I hereby certify that the well location shown on this plat was plotted from field notes of actual surveys made by me or under my supervision and that the same is true and correct to the best of my belief

October 8, 2008

Date of Survey
Signature & Seal of Professional Surveyor



W.O. Number 2008-112

Certificate No. MACOM, McDONALD 12185

Ch