

RECEIVED**DISTRICT I**

1625 N. FRENCH DR., HOBBS, NM 88240

JUN 02 2009

State of New Mexico
Energy, Minerals and Natural Resources Department**DISTRICT II**

1301 W. GRAND AVENUE, ARTESIA, NM 88210

HOBBS**CONSERVATION DIVISION**1220 SOUTH ST. FRANCIS DR.
Santa Fe, New Mexico 87505

Form C-102

Revised October 12, 2005

Submit to Appropriate District Office

State Lease - 4 Copies

Fee Lease - 3 Copies

DISTRICT III

1000 Rio Brazos Rd., Aztec, NM 87410

DISTRICT IV

1220 S. ST. FRANCIS DR., SANTA FE, NM 87505

WELL LOCATION AND ACREAGE DEDICATION PLAT☐ AMENDED REPORT

API Number 30-025-39440	Pool Code 22900 ✓	Pool Name EUNICE BLINEBRY TUBB DRINKARD NORTH
Property Code 12503	Property Name NORTHEAST DRINKARD UNIT	Well Number 158
OGRID No. 873	Operator Name APACHE CORPORATION	Elevation 3488'

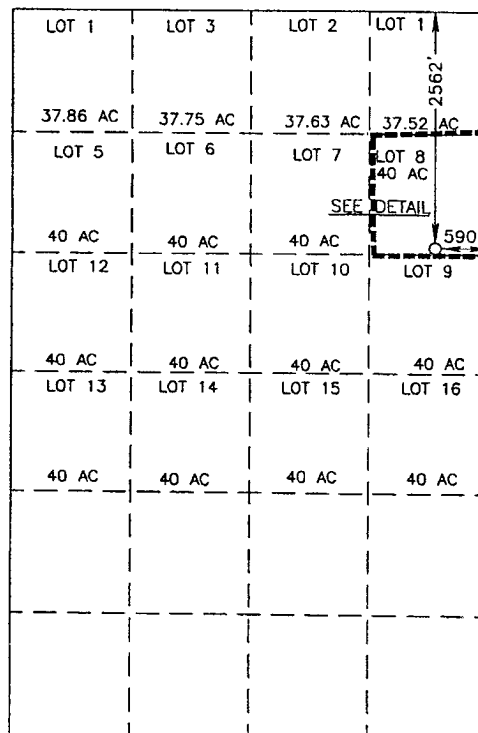
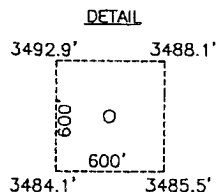
Surface Location

UL or lot No.	Section	Township	Range	Lot Idn	Feet from the	North/South line	Feet from the	East/West line	County
8	3	21-S	37-E		2562	NORTH	590	EAST	LEA

Bottom Hole Location If Different From Surface

UL or lot No.	Section	Township	Range	Lot Idn	Feet from the	North/South line	Feet from the	East/West line	County
Dedicated Acres 40	Joint or Infill	Consolidation Code	Order No.						

NO ALLOWABLE WILL BE ASSIGNED TO THIS COMPLETION UNTIL ALL INTERESTS HAVE BEEN CONSOLIDATED
OR A NON-STANDARD UNIT HAS BEEN APPROVED BY THE DIVISION

**GEODETIC COORDINATES
NAD 27 NME**Y=553147.7 N
X=866676.5 ELAT.=32.515088" N
LONG.=103.143824" W
LAT. = 32°30'54.32" N
LONG. = 103°08'37.77" W

SCALE: 1" = 2000'

OPERATOR CERTIFICATION

I hereby certify that the information herein is true and complete to the best of my knowledge and belief, and that this organization either owns a working interest or unleased mineral interest in the land including the proposed bottom hole location or has a right to drill this well at this location pursuant to a contract with an owner of such mineral or working interest, or to a voluntary pooling agreement or a compulsory pooling order heretofore entered by the division.

Signature: *Joe T. Janica*
Date: 03/04/09
Printed Name: Joe T. Janica

SURVEYOR CERTIFICATION

I hereby certify that the well location shown on this plat was plotted from field notes of actual surveys made by me or under my supervision, and that the same is true and correct to the best of my belief.

DATE SURVEYED: OCTOBER 09, 2008
Signature & Seal of Professional Surveyor: *Ronald J. Eidson*
Certificate No. GARY EIDSON 12641
RONALD J. EIDSON 3239

EXHIBIT "A"

Ch