

**DISTRICT II**  
P.O. Drawer DD, Artesia, NM 88211-0719

DISTRICT III  
1000 Rio Brazos Rd., Aztec, NM 87410

DISTRICT IV  
2040 South Pacheco, Santa Fe, NM 87505

OIL CONSERVATION DIVISION  
2040 South Pacheco  
Santa Fe, NM 87505

RECEIVED  
ON JAN 22 2010  
HOBBSOCD

☐ AMENDED REPORT

# WELL LOCATION AND ACREAGE DEDICATION PLAT

API Number 30-025-39657	Pool Code 62180	Pool Name VACUUM', GRAYBURG - SAN ANDRES
Property Code 31122	Property Name EAST VACUUM GBSA UNIT	Well Number 503 3315W-5008
OGRID No. 21814217817	Operator Name CONOCOPHILLIPS	Elevation 3942'

### Surface Location

UL or lot No.	Section	Township	Range	Lot Idn	Feet from the	North/South line	Feet from the	East/West line	County
J	33	17-S	35-E		1840	SOUTH	2248	EAST	LEA

## Bottom Hole Location If Different From Surface

UL or lot No.	Section	Township	Range	Lot Idn	Feet from the	North/South line	Feet from the	East/West line	County
J	33	17-S	35-E		1690	SOUTH	2328	EAST	LEA

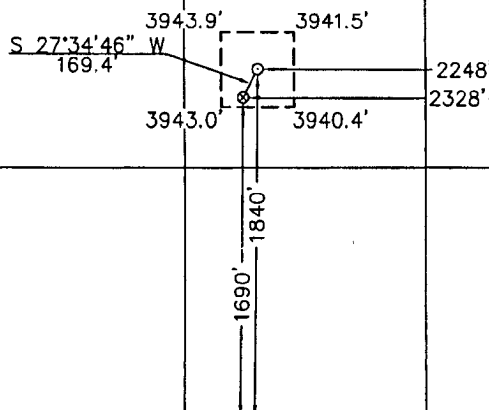
Dedicated Acres	Joint or Infill	Consolidation Code	Order No.
40			

NO ALLOWABLE WILL BE ASSIGNED TO THIS COMPLETION UNTIL ALL INTERESTS HAVE BEEN CONSOLIDATED OR A NON-STANDARD UNIT HAS BEEN APPROVED BY THE DIVISION

NOTE:

- 1) Plane Coordinates shown hereon are Transverse Mercator Grid and Conform to the "New Mexico Coordinate System", New Mexico East Zone, North American Datum of 1927. Distances shown hereon are mean horizontal surface values.

COORDINATE TABLE	
DESCRIPTION	PLANE COORDINATE
EAST VACUUM GBSA UNIT #3315-502Z	X = 768,132.8
SURFACE LOCATION	Y = 651,854.6
EAST VACUUM GBSA UNIT #3315-502Z	X = 768,054.3
BOTTOM HOLE LOCATION	Y = 651,704.4



### OPERATOR CERTIFICATION

I hereby certify the the information  
contained herein is true and complete to the  
best of my knowledge and belief

Signature \_\_\_\_\_

JALYN N. FISKE

Printed Name \_\_\_\_\_

REGULATORY SPECIALIST

Title

1-20-2010

Date \_\_\_\_\_

### SURVEYOR CERTIFICATION

I hereby certify that the well location shown on this plat was plotted from field notes of actual surveys made by me or under my supervision and that the same is true and correct to the best of my belief

November 3, 2009

Date Surveyed
---------------

Signature & Seal of  
Professional Surveyor

Professional

W.O. Num.: 2009-0747.

Certificate No. **MAGON, McDONALD**

Ch