

DISTRICT I  
1625 N. French Dr., Hobbs, NM 88240

State of New Mexico  
Energy, Minerals & Natural Resources Department

Form C-102  
Revised August 15, 2000  
Submit to Appropriate District Office  
State Lease - 4 Copies  
Fee Lease - 3 Copies

DISTRICT II  
P.O. Drawer DD, Artesia, NM 88211-0719

DISTRICT III  
1000 Rio Brazos Rd., Aztec, NM 87410

DISTRICT IV  
2040 South Pacheco, Santa Fe, NM 87505

OIL CONSERVATION DIVISION  
2040 South Pacheco  
Santa Fe, NM 87505

EXHIBIT 20

☐ AMENDED REPORT

WELL LOCATION AND ACREAGE DEDICATION PLAT

API Number <b>30-025-08833</b>	Pool Code <b>79240</b>	Pool Name <b>JALMAT:TANSILL-YATES-7RIVERS(GAS)</b>
Property Code	Property Name <b>STATE A A/C 2</b>	Well Number <b>24</b>
OGRID No. <b>194849</b>	Operator Name <b>PETROHAWK OPERATING COMPANY</b>	Elevation <b>3596'</b>

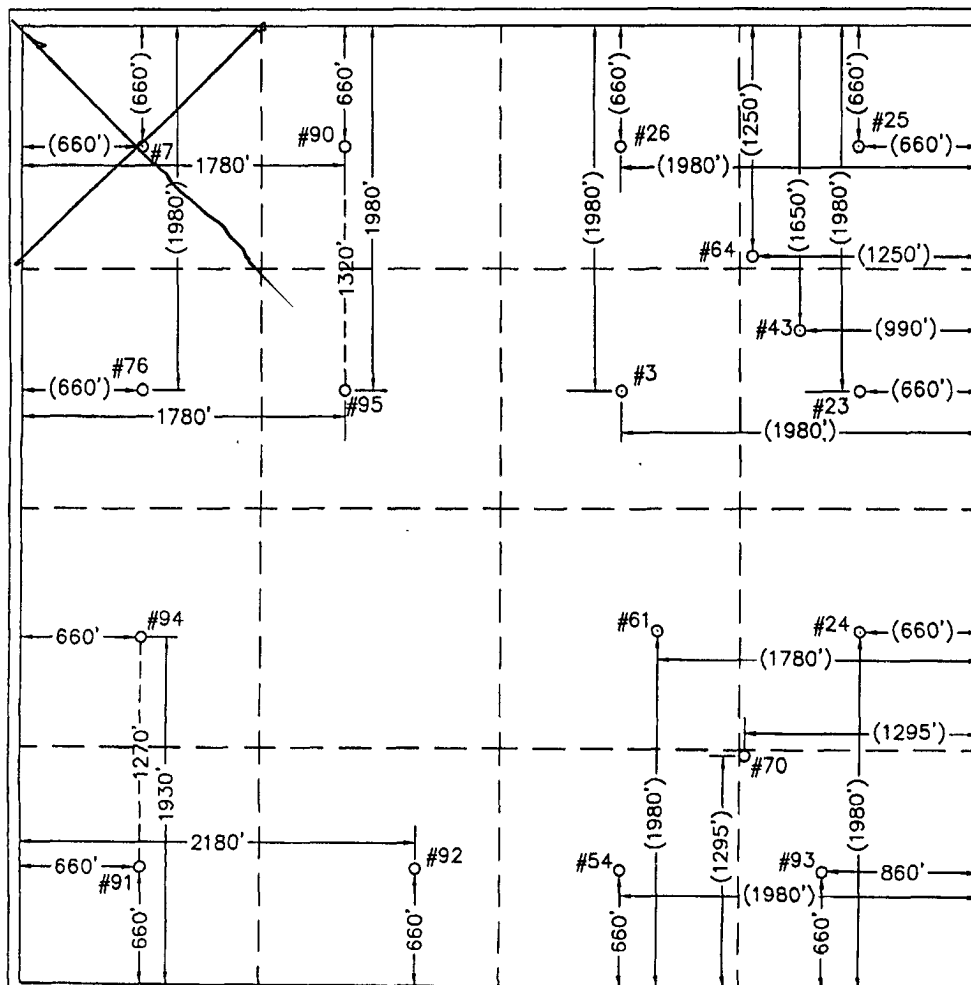
Surface Location

UL or lot No. <b>I</b>	Section <b>8</b>	Township <b>22 S</b>	Range <b>36 E</b>	Lot Idn	Feet from the	North/South line <b>SOUTH</b>	Feet from the <b>660</b>	East/West line <b>EAST</b>	County <b>LEA</b>
---------------------------	---------------------	-------------------------	----------------------	---------	---------------	----------------------------------	-----------------------------	-------------------------------	----------------------

Bottom Hole Location If Different From Surface

UL or lot No. <b>SAME</b>	Section	Township	Range	Lot Idn	Feet from the <b>1980</b>	North/South line	Feet from the	East/West line	County
Dedicated Acres <b>600</b>	Joint or Infill <b>INFILL</b>	Consolidation Code	Order No. <b>SD-06-13</b>						

NO ALLOWABLE WILL BE ASSIGNED TO THIS COMPLETION UNTIL ALL INTERESTS HAVE BEEN CONSOLIDATED OR A NON-STANDARD UNIT HAS BEEN APPROVED BY THE DIVISION



OPERATOR CERTIFICATION

I hereby certify the the information contained herein is true and complete to the best of my knowledge and belief

*Nancy K. Gatti*  
Signature

NANCY K. GATTI  
Printed Name  
REGULATORY MANAGER

Title  
04/28/06

Date

SURVEYOR CERTIFICATION

I hereby certify that the well location shown on this plat was plotted from field notes of actual surveys made by me or under my upervision and that the same is true and correct to the best of my belief

June 9, 2005

Date Surveyed  
Signature & Seal of Professional Surveyor LVA

*W.O. Num. 2005-0469*  
(12185)

W.O. Num. 2005-0469  
Certificate No. MACON McDONALD 12185

WELL LOCATIONS SHOWN HEREON WITH DIMENSIONS IN PARENTHESIS WERE PROVIDED BY MISSION RESOURCES CORPORATION AND ARE NOT FIELD SURVEYED.