

DISTRICT II
P.O. Drawer DD, Artesia, NM 88211-0719

DISTRICT III
1000 Rio Brazos Rd., Aztec, NM 87410

DISTRICT IV
2040 South Pacheco, Santa Fe, NM 87506

OIL CONSERVATION DIVISION
2040 South Pacheco
Santa Fe, NM 87505

EXHIBIT 20

☐ AMENDED REPORT

WELL LOCATION AND ACREAGE DEDICATION PLAT

API Number 30-025-08837	Pool Code 79240	Pool Name JALMAT:TANSILL-YATES-7RIVERS:(GAS)
Property Code	Property Name STATE A A/C 2	Well Number 43
OGRID No. 194849	Operator Name PETROHAWK OPERATING COMPANY	Elevation 3596'

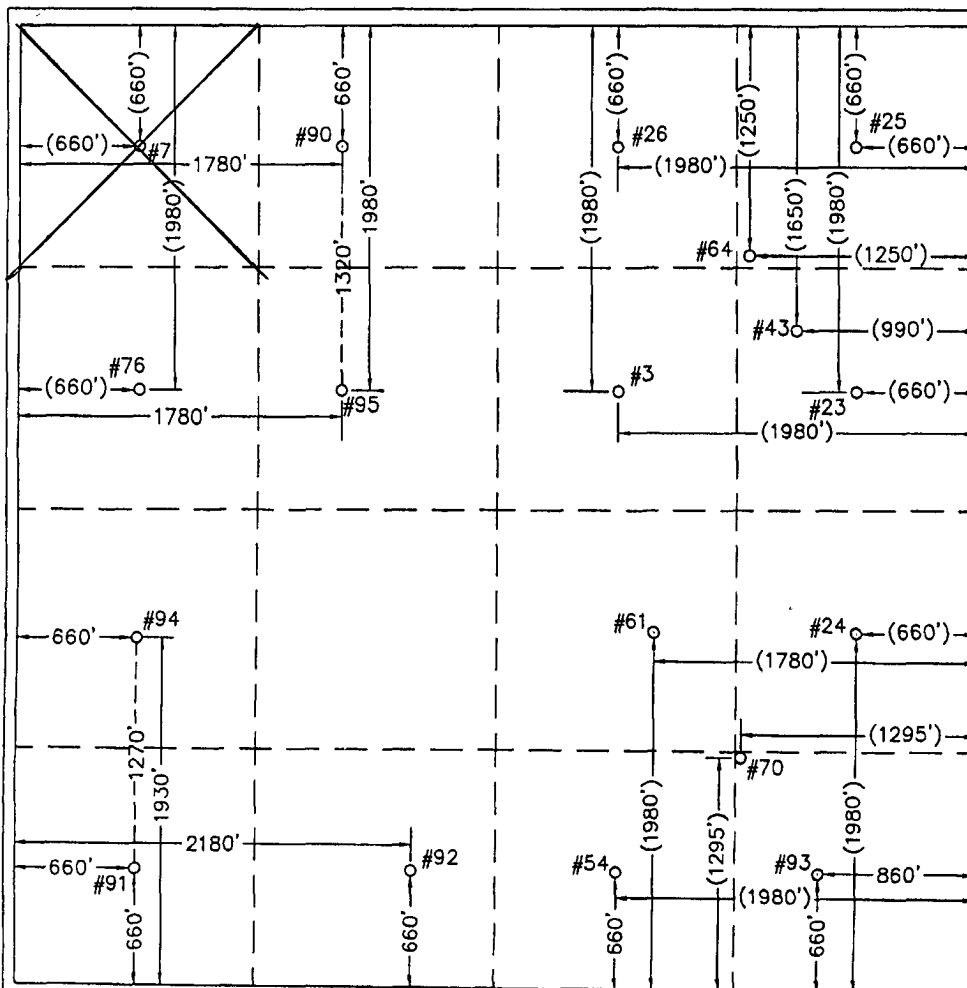
Surface Location

UL or lot No.	Section	Township	Range	Lot Idn	Feet from the	North/South line	Feet from the	East/West line	County
4	8	22 S	36 E		1650	NORTH	990	EAST	LEA

Bottom Hole Location If Different From Surface

UL or lot No. SAME	Section	Township	Range	Lot Idn	Feet from the	North/South line	Feet from the	East/West line	County
Dedicated Acres 600	Joint or Infill INFILL	Consolidation Code			Order No. SD-06-13				

NO ALLOWABLE WILL BE ASSIGNED TO THIS COMPLETION UNTIL ALL INTERESTS HAVE BEEN CONSOLIDATED OR A NON-STANDARD UNIT HAS BEEN APPROVED BY THE DIVISION



OPERATOR CERTIFICATION

I hereby certify the the information contained herein is true and complete to the best of my knowledge and belief.

Nancy K. Belli
Signature

NANCY K. GATTI

Printed Name

REGULATORY MANAGER

Title
04/28/06

Date _____

SURVEYOR CERTIFICATION

I hereby certify that the well location shown on this plat was plotted from field notes of actual surveys made by me or under my supervision and that the same is true and correct to the best of my belief.

June 9, 2005

Date Surveyed _____

Signature & Seal of
Professional Surveyor

Shaw

(1218)

W.O. Num. 2005-0469

Certificate No. **MACON McDONALD** 12185

WELL LOCATIONS SHOWN HEREON WITH DIMENSIONS IN PARENTHESIS WERE PROVIDED BY MISSION RESOURCES CORPORATION AND ARE NOT FIELD SURVEYED.