

DISTRICT II
P.O. Drawer DD, Artesia, NM 88211-0719

DISTRICT III
1000 Rio Brazos Rd., Aztec, NM 87410

DISTRICT IV
2040 South Pacheco, Santa Fe, NM 87506

OIL CONSERVATION DIVISION
2040 South Pacheco
Santa Fe, NM 87505

EXHIBIT 19

☐ AMENDED REPORT

WELL LOCATION AND ACREAGE DEDICATION PLAT

API Number 30-025-38029	Pool Code 79240	Pool Name JALMAT:TANSILL-YATES-7RIVERS (GAS)
Property Code	Property Name STATE A A/C 2	Well Number 92
OGRIID No. 194849	Operator Name PETROHAWK OPERATING COMPANY	Elevation 3586'

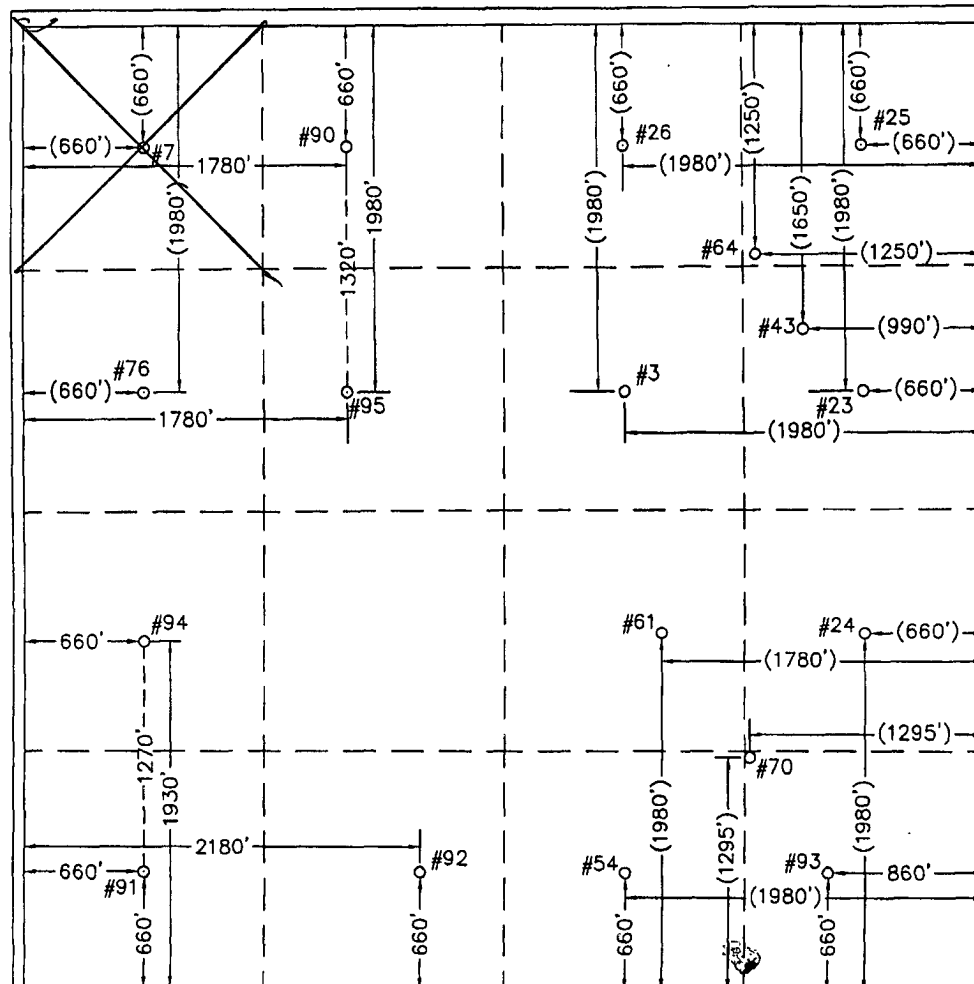
Surface Location

UL or lot No.	Section	Township	Range	Lot Idn	Feet from the	North/South line	Feet from the	East/West line	County
N	8	22 S	36 E		660	SOUTH	2180	WEST	LEA

Bottom Hole Location If Different From Surface

UL or lot No.	Section	Township	Range	Lot Idn	Feet from the	North/South line	Feet from the	East/West line	County
SAME									
Dedicated Acres	Joint or Infill	Consolidation Code	Order No.						
600	INFILL		SD-06-13						

NO ALLOWABLE WILL BE ASSIGNED TO THIS COMPLETION UNTIL ALL INTERESTS HAVE BEEN CONSOLIDATED OR A NON-STANDARD UNIT HAS BEEN APPROVED BY THE DIVISION



OPERATOR CERTIFICATION

I hereby certify the the information
contained herein is true and complete to the
best of my knowledge and belief

Signature Nancy K. Gatti
NANCY K. GATTI

Printed Name
REGULATORY MANAGER

Title 04/28/06

Date

SURVEYOR CERTIFICATION

I hereby certify that the well location shown on this plat was plotted from field notes of actual surveys made by me or under my upervison and that the same is true and correct to the best of my belief

June 19, 2005

Date Surveyed _____ LVA
Signature & Seal of Professional Surveyor _____

M. M. 1212

W.O. Num. 2005-0470

Certificate No. **MACON McDONALD** 12185

WELL LOCATIONS SHOWN HEREON WITH DIMENSIONS IN PARENTHESIS WERE PROVIDED BY MISSION RESOURCES CORPORATION AND ARE NOT FIELD SURVEYED.