

DISTRICT I
1625 N. French Dr., Hobbs, NM 88240

State of New Mexico

Energy, Minerals & Natural Resources Department

Form C-102

Revised October 12, 2005

Submit to Appropriate District Office

State Lease - 4 Copies

Fee Lease - 3 Copies

DISTRICT II
1501 W. Grand Avenue, Artesia, NM 88210

OIL CONSERVATION DIVISION

1220 South St. Frances Dr.

Santa Fe, NM 87505

DISTRICT III
1000 Rio Brazos Rd., Artesia, NM 87410

DISTRICT IV
1220 S. St. Francis Dr., Santa Fe, NM 87505

AMENDED REPORT

WELL LOCATION AND ACREAGE DEDICATION PLAT

API Number 30-025- -39191	Pool Code 6660	Pool Name Blinebry; Oil & Gas
Property Code 31493	Property Name WARREN UNIT	Well Number 325
OGRID No. 217817	Operator Name CONOCOPHILLIPS	Elevation 3570'

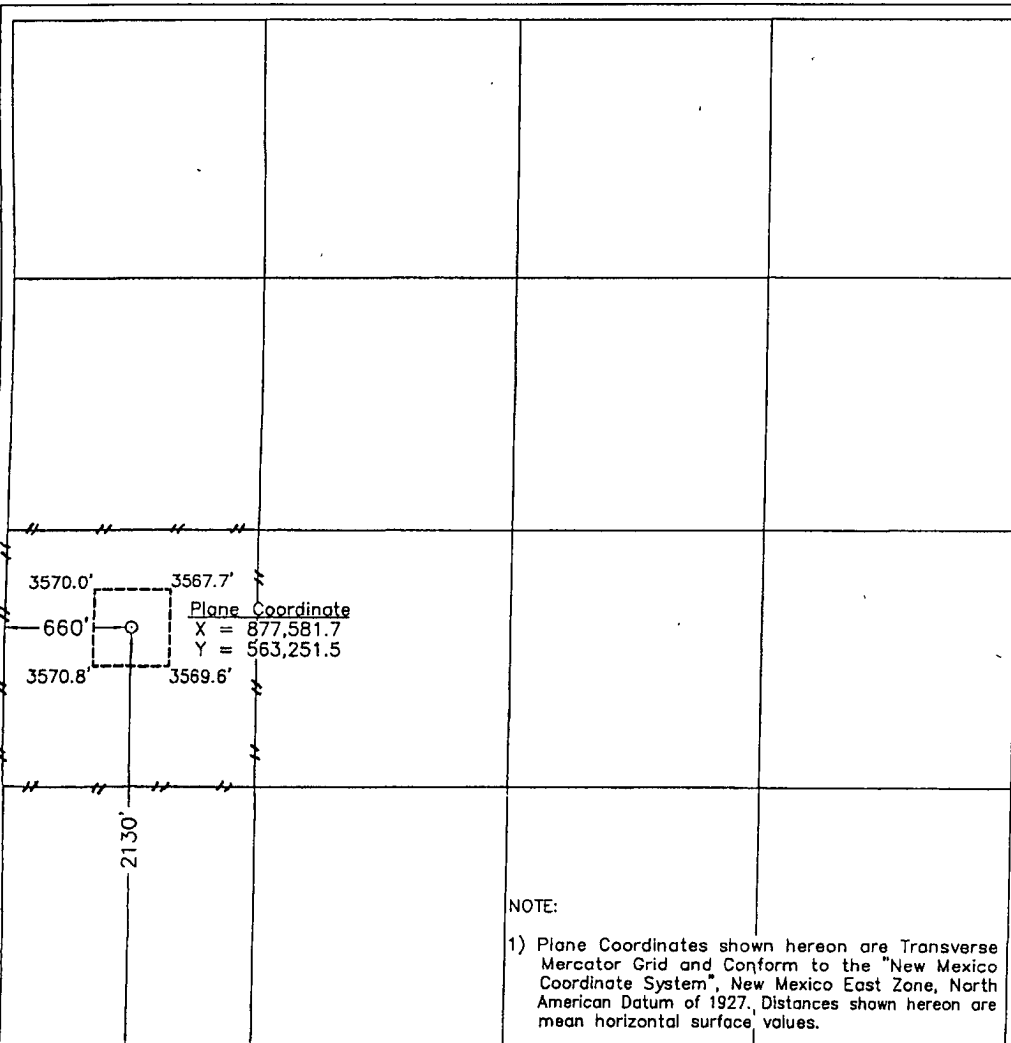
Surface Location

UL or lot No. L	Section 25	Township 20 S	Range 38 E	Lot Idn	Feet from the 2130	North/South line SOUTH	Feet from the 660	East/West line WEST	County LEA
--------------------	---------------	------------------	---------------	---------	-----------------------	---------------------------	----------------------	------------------------	---------------

Bottom Hole Location If Different From Surface

UL or lot No.	Section	Township	Range	Lot Idn	Feet from the	North/South line	Feet from the	East/West line	County
Dedicated Acres 40	Joint or Infill	Consolidation Code	Order No.						

NO ALLOWABLE WILL BE ASSIGNED TO THIS COMPLETION UNTIL ALL INTERESTS HAVE BEEN CONSOLIDATED OR A NON-STANDARD UNIT HAS BEEN APPROVED BY THE DIVISION



OPERATOR CERTIFICATION

I hereby certify the information contained herein is true and complete to the best of my knowledge and belief, and that this organization either owns a working interest or undivided mineral interest in the land including the proposed bottom hole location or has a right to drill this well at this location pursuant to a contract with an owner of such a mineral or working interest, or to a voluntary pooling agreement or a compulsory pooling order heretofore entered by the division.

Celeste G. Dale 10/08/08
Signature Date

Celeste G. Dale
Printed Name

SURVEYOR CERTIFICATION

I hereby certify that the well location shown on this plat was plotted from field notes of actual surveys made by me or under my supervision and that the same is true and correct to the best of my belief

March 20, 2008

Date of Survey LVA
Signature & Seal of Professional Surveyor

W.O. Num. 2008-0282

Certificate No. MACON McDONALD 12185