

State of New Mexico

DISTRICT I

1825 N FRENCH DR., ROOBS, NM 88240

DISTRICT II

1301 W. GRAND AVENUE, ARTESIA, NM 88210

DISTRICT III

1000 Rio Brazos Rd., Aztec, NM 87410

DISTRICT IV

1220 S. ST. FRANCIS DR., SANTA FE, NM 87505

Energy, Minerals and Natural Resources Department

OIL CONSERVATION DIVISION
1220 SOUTH ST. FRANCIS DR.
Santa Fe, New Mexico 87505

Form C-102

Revised October 12, 2005

Submit to Appropriate District Office

State Lease - 4 Copies

Fee Lease - 3 Copies

WELL LOCATION AND ACREAGE DEDICATION PLAT

☐ AMENDED REPORT

API Number 30-025-39249	Pool Code 96040	Well Name Wildcat Undesignated Morrow
Property Code 37472	Property Name SCREECH FEDERAL COM	Well Number 1
OGRID No. 4378	Operator Name CHI OPERATING	Elevation 4116'

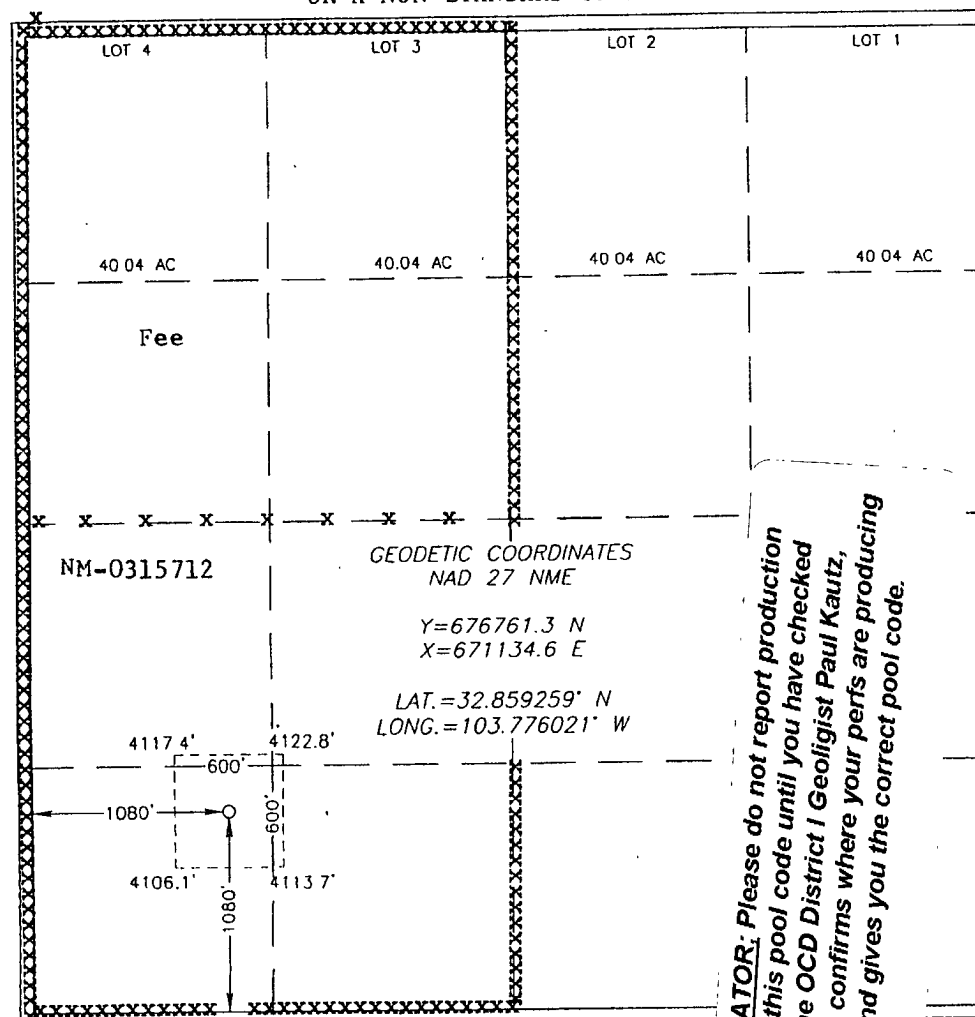
Surface Location

UL or lot No.	Section	Township	Range	Lot Idn	Feet from the	North/South line	Feet from the	East/West line	County
M	4	17-S	32-E		1080	SOUTH	1080	WEST	LEA

Bottom Hole Location If Different From Surface

UL or lot No.	Section	Township	Range	Lot Idn	Feet from the	North/South line	Feet from the	East/West line	County
Dedicated Acres 320	Joint or Infill	Consolidation Code C	Order No.						

NO ALLOWABLE WILL BE ASSIGNED TO THIS COMPLETION UNTIL ALL INTERESTS HAVE BEEN CONSOLIDATED
OR A NON-STANDARD UNIT HAS BEEN APPROVED BY THE DIVISION



OPERATOR: Please do not report production
under this pool code until you have checked
with the OCD District I Geologist Paul Kautz,
and he confirms where your perfs are producing
from and gives you the correct pool code.

OPERATOR CERTIFICATION

I hereby certify that the information herein is true and complete to the best of my knowledge and belief, and that this organization either owns a working interest or unleased mineral interest in the land including the proposed bottom hole location or has a right to drill this well at this location pursuant to a contract with an owner of such mineral or working interest, or to a voluntary pooling agreement or a compulsory pooling order heretofore entered by the division.

George R. Smith 9/9/08
Signature Date

George R. Smith

Printed Name

agent for Chi Operating, Inc

SURVEYOR CERTIFICATION

I hereby certify that the well location shown on this plat was plotted from field notes of actual surveys made by me or under my supervision, and that the same is true and correct to the best of my belief.

RONALD J. EIDSON
Date Surveyed 9/15/08
Signature & Seal of Professional Surveyor
Ronald J. Eidson 9/25/08

Certificate No. GARY EIDSON 12641
RONALD EIDSON 3239

ch