

DISTRICT I

1825 N. French Dr., Hobbs, NM 58240

DISTRICT II

1301 W. Grand Avenue, Artesia, NM 58210

DISTRICT III

1000 Rio Brazos Rd., Aztec, NM 87410

DISTRICT IV

1220 S. St. Francis Dr., Santa Fe, NM 87505

State of New Mexico
Energy, Minerals and Natural Resources Department

OIL CONSERVATION DIVISION

1220 South St. Francis Dr.
Santa Fe, New Mexico 87505Form C-102
Revised October 12, 2005Submit to Appropriate District Office
State Lease - 4 Copies
Fee Lease - 3 Copies☐ AMENDED REPORT

WELL LOCATION AND ACREAGE DEDICATION PLAT

API Number 30.025 39623	Pool Code 59476 ✓	Pool Name Tonto; Bone Spring, South
Property Code 300536	Property Name NORTH MADURO FEDERAL UNIT	Well Number 3
OGRID No. 162683	Operator Name CIMAREX ENERGY CO. OF COLORADO	Elevation 3612'

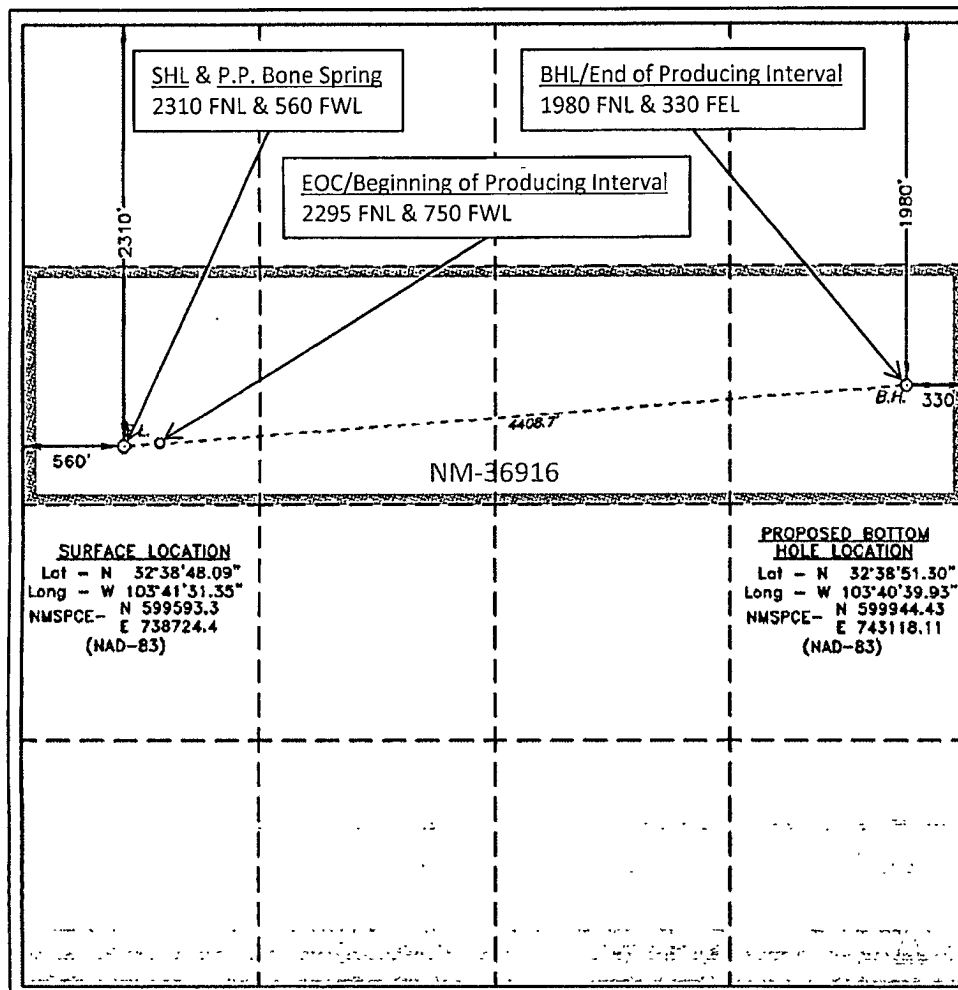
Surface Location

UL or lot No.	Section	Township	Range	Lot Idn	Feet from the	North/South line	Feet from the	East/West line	County
E	20	19 S	33 E		2310	NORTH	560	WEST	LEA

Bottom Hole Location If Different From Surface

UL or lot No.	Section	Township	Range	Lot Idn	Feet from the	North/South line	Feet from the	East/West line	County
H	20	19 S	33 E		1980	NORTH	330	EAST	LEA
Dedicated Acres 160	Joint or Infill	Consolidation Code U	Order No.						

NO ALLOWABLE WILL BE ASSIGNED TO THIS COMPLETION UNTIL ALL INTERESTS HAVE BEEN CONSOLIDATED
OR A NON-STANDARD UNIT HAS BEEN APPROVED BY THE DIVISION



OPERATOR CERTIFICATION

I hereby certify that the information contained herein is true and complete to the best of my knowledge and belief, and that this organization either owns a working interest or unleased mineral interest in the land including the proposed bottom hole location pursuant to a contract with an owner of such a mineral or working interest, or to a voluntary pooling agreement or a compulsory pooling order heretofore entered by the division.

Zeno Farris 10/14/2009
Signature Date

Zeno Farris
Printed Name

SURVEYOR CERTIFICATION

I hereby certify that the well location shown on this plat was plotted from field notes of actual surveys made by me or under my supervision, and that the same is true and correct to the best of my belief.

OCTOBER 5 2009
Date Surveyed
Signature of Professional Surveyor
7977
Certificate No. Gary L. Jones 7977

BASIN SURVEYS