

District I

1625 N. French Dr., Hobbs, NM 88240

District II

1301 W. Grand Avenue, Artesia, NM 88210

District III

1000 Rio Brazos Rd., Aztec, NM 87410

District IV

1220 S. St. Francis Dr., Santa Fe, NM 87505

State of New Mexico

Energy, Minerals & Natural Resources Department

Form C-102

Revised October 15, 2009

Submit one copy to appropriate

District Office

RECEIVED CONSERVATION DIVISION

FEB 10 2010

HOBBSOCD

1220 South St. Francis Dr.

Santa Fe, NM 87505

☒ AMENDED REPORT

WELL LOCATION AND ACREAGE DEDICATION PLAT

¹ API Number 30 0-25 39404	² Pool Code	³ Pool Name Caprock Wolfcamp, East (9310)
⁴ Property Code	⁵ Property Name Moore Cowbell 27 State	⁶ Well Number # 1
⁷ OGRID No. 249099	⁸ Operator Name Caza Operating, LLC	⁹ Elevation 4335 ft GR

¹⁰ Surface Location

UL or lot no.	Section	Township	Range	Lot Idn	Feet from the	North/South line	Feet from the	East/West line	County
P	27	12 S	32 E		660	South	990	East	Lea

¹¹ Bottom Hole Location If Different From Surface

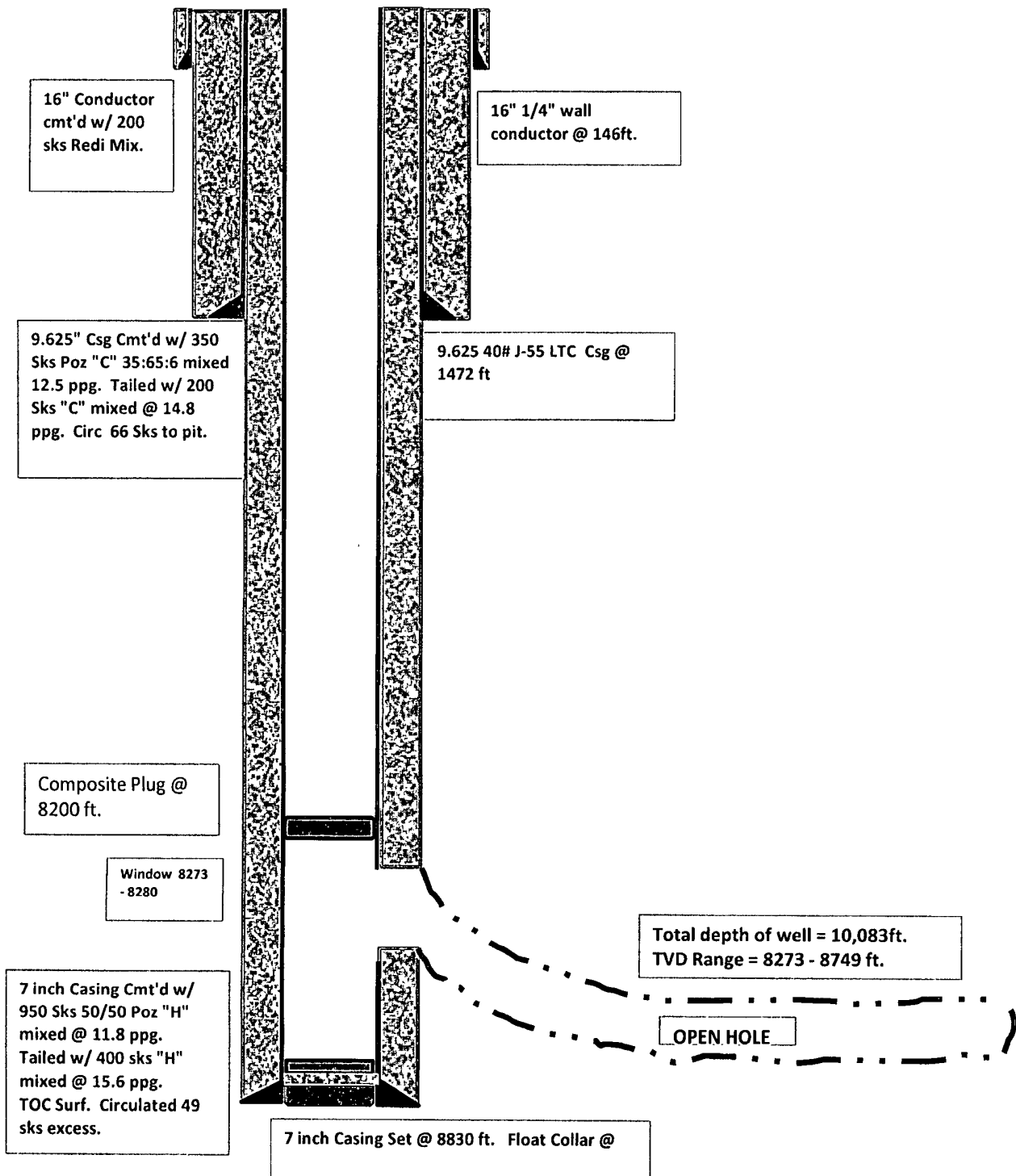
UL or lot no.	Section	Township	Range	Lot Idn	Feet from the	North/South line	Feet from the	East/West line	County
O	27	12 S	32 E		625 622	South	2534	East	Lea

¹² Dedicated Acres 80	¹³ Joint or Infill	¹⁴ Consolidation Code	¹⁵ Order No.
--	-------------------------------	----------------------------------	-------------------------

No allowable will be assigned to this completion until all interests have been consolidated or a non-standard unit has been approved by the division.

¹⁶ 	¹⁷ OPERATOR CERTIFICATION I hereby certify that the information contained herein is true and complete to the best of my knowledge and belief, and that this organization either owns a working interest or unleased mineral interest in the land including the proposed bottom hole location or has a right to drill this well at this location pursuant to a contract with an owner of such a mineral or working interest, or to a voluntary pooling agreement or a compulsory pooling order heretofore entered by the division.	
	Signature Date 8/20/2010	
	Printed Name Richard L. Wright	
	¹⁸ SURVEYOR CERTIFICATION I hereby certify that the well location shown on this plat was plotted from field notes of actual surveys made by me or under my supervision, and that the same is true and correct to the best of my belief.	
Date of Survey		Signature and Seal of Professional Surveyor
Certificate Number		

Moore Cowbell 27 State # 1
660 FSL & 990 FEL, Sec 27, T12S, R32E,
Lea County, New Mexico
POST DRILLING WELL BORE





RECEIVED

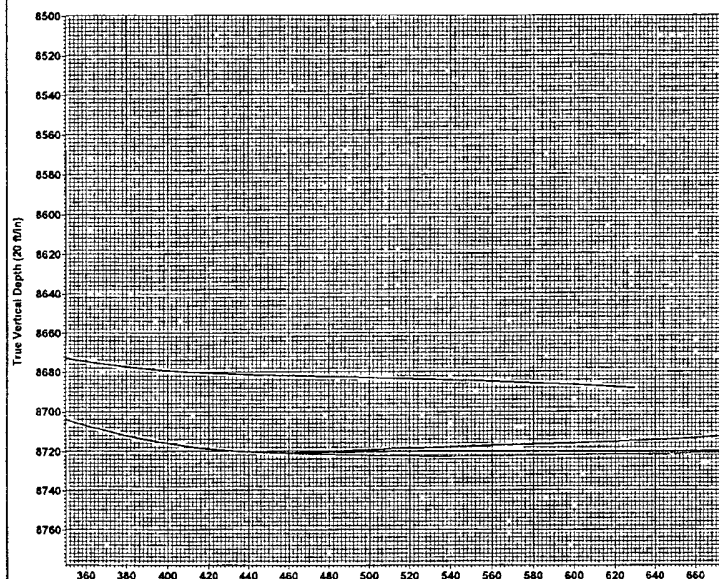
FEB 10 2010
HOBBSOC



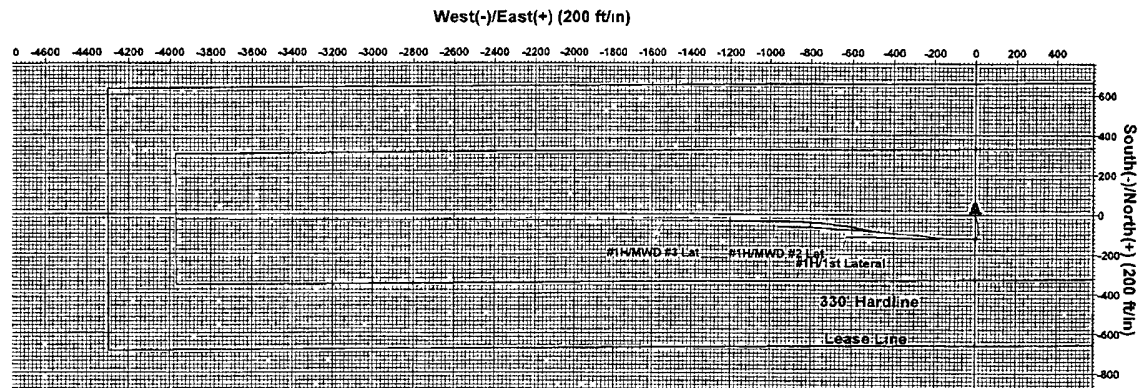
Azimuths to Grid North
True North: -0.35°
Magnetic North: 7.55°

Magnetic Field
Strength: 49392.1snT
Dip Angle: 61.16°
Date: 11/30/2009
Model: IGRF200510

PATHFINDER



Vertical Section at 269.60° (20 ft/in)



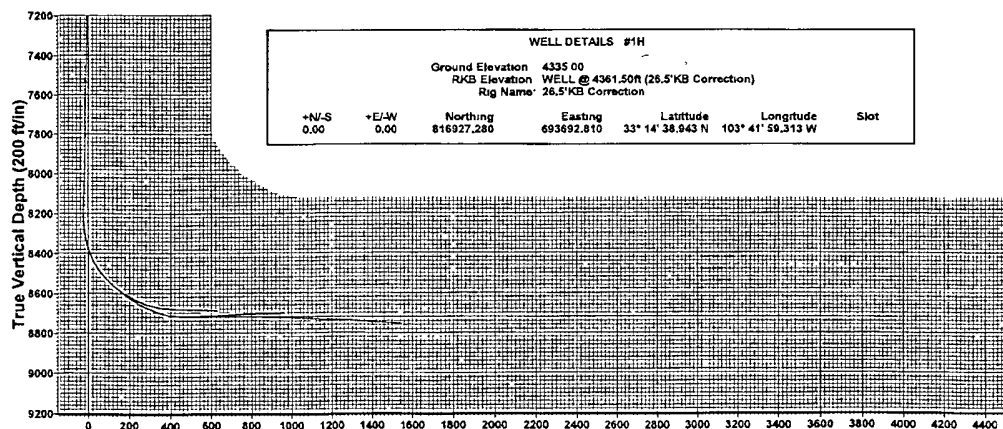
SECTION DETAILS										
Sec	MD	Inc	Azi	TVD	+N/-S	+E/-W	Dleg	TFace	VSec	Target
1	8993.00	90.86	275.02	8721.03	-89.79	-460.59	0.00	0.00	461.21	
2	9093.00	90.00	282.00	8720.45	-75.00	-559.43	7.01	95.37	559.94	
3	9489.83	90.00	270.10	8720.45	-33.27	-653.14	3.00	-96.00	853.35	
4	12506.79	90.00	270.10	8720.45	-27.95	-3970.30	0.00	0.00	3970.40	PBHL(DLAT)

PROJECT DETAILS: Lea County
Geodetic System: US State Plane 1927 (Exact solution)
Datum: NAD 1927 (NADCON CONUS)
Ellipsoid: Clarke 1856
Zone: New Mexico East 3001
System Datum: Mean Sea Level
Local North: Gnd

LEGEND

- #1H, OH, 1st Lateral
- #1H, OH, MWD #2 Lat
- #1H, OH, MWD #3 Lat
- Plan #7

Project: Lea County
Site: Moore Cowbell "27" State
Well: #1H
Wellbore: OH
Plan: Plan #7 (#1H/OH)



Vertical Section at 269.60° (200 ft/in)

WELL DETAILS #1H						
Ground Elevation: 4335.00						
RKB Elevation: WELL @ 4361.50ft (26.5'KB Correction)						
Rig Name: 26.5'KB Correction						
+N/-S	+E/-W	Northing	Easting	Latitude	Longitude	Slot
0.00	0.00	816927.280	693692.810	33° 14' 38.943 N	103° 41' 59.313 W	

Plan: Plan #7 (#1H/OH)

Created By: Nate Bingham Date: 14 21, January 18 2010

Checked: _____ Date: _____