

DISTRICT I
1625 N. French Dr., Hobbs, NM 88201
DISTRICT II
1301 W. Grand Avenue, Artesia, NM 88210
DISTRICT III
1000 Rio Brazos Rd., Aztec, NM 87410
DISTRICT IV
1220 S. St. Francis Dr., Santa Fe, NM 87505

RECEIVED

MAR 29 2010
HOBBS

State of New Mexico
Energy, Minerals and Natural Resources Department
OIL CONSERVATION DIVISION
1220 South St. Francis Dr.
Santa Fe, New Mexico 87505

Form C-102
Revised October 15, 2009

Submit one copy to appropriate
District Office

WELL LOCATION AND ACREAGE DEDICATION PLAT

☐ AMENDED REPORT

API Number 30-025-39550	Pool Code 6660	Pool Name Blinebry Oil & Gas (Oil)
Property Code 306625	Property Name WALTER LYNCH	Well Number 10
OGRID No. 873	Operator Name APACHE CORPORATION	Elevation 3352'

Surface Location

UL or lot No.	Section	Township	Range	Lot Idn	Feet from the	North/South line	Feet from the	East/West line	County
LOT 3	1	22 S	37 E		990	NORTH	1800	WEST	LEA

Bottom Hole Location If Different From Surface

UL or lot No.	Section	Township	Range	Lot Idn	Feet from the	North/South line	Feet from the	East/West line	County
Dedicated Acres 40.39.84	Joint or Infill	Consolidation Code	Order No.						

NO ALLOWABLE WILL BE ASSIGNED TO THIS COMPLETION UNTIL ALL INTERESTS HAVE BEEN CONSOLIDATED
OR A NON-STANDARD UNIT HAS BEEN APPROVED BY THE DIVISION

<p>SURFACE LOCATION Lat - N 32°25'31.59" Long - W 103°07'09.80" NMSPCE- N 520634.298 E 915910.187 (NAD-83)</p>	OPERATOR CERTIFICATION I hereby certify that the information contained herein is true and complete to the best of my knowledge and belief, and that this organization either owns a working interest or unleased mineral interest in the land including the proposed bottom hole location or has a right to drill this well at this location pursuant to a contract with an owner of such a mineral or working interest, or to a voluntary pooling agreement or a compulsory pooling order heretofore entered by the division. Signature Date 3/26/10 Printed Name David Catanach	
	SURVEYOR CERTIFICATION I hereby certify that the well location shown on this plat was plotted from field notes of actual surveys made by me or under my supervision, and that the same is true and correct to the best of my belief. Date Surveyed Signature & Seal of Professional Surveyor Certificate No. Gary L. Jones 7977 BASIN SURVEYS	

RECEIVED

DISTRICT I
1625 N. French Dr., Hobbs, NM 88240

DISTRICT II
1301 W. Grand Avenue, Artesia, NM 88210

DISTRICT III
1000 Rio Brazos Rd., Aztec, NM 87410

DISTRICT IV
1220 S. St. Francis Dr., Santa Fe, NM 87505

State of New Mexico
Energy, Minerals and Natural Resources Department

HOBBSDUCE CONSERVATION DIVISION

1220 South St. Francis Dr.
Santa Fe, New Mexico 87505

Form C-102
Revised October 15, 2009

Submit one copy to appropriate
District Office

WELL LOCATION AND ACREAGE DEDICATION PLAT☐ AMENDED REPORT

API Number 30-025-39550	Pool Code 60240	Pool Name Tubb Oil & Gas (Oil)
Property Code 306625	Property Name WALTER LYNCH	Well Number 10
OGRID No. 873	Operator Name APACHE CORPORATION	Elevation 3352'

Surface Location

UL or lot No. LOT 3	Section 1	Township 22 S	Range 37 E	Lot Idn	Feet from the 990	North/South line NORTH	Feet from the 1800	East/West line WEST	County LEA
-------------------------------	---------------------	-------------------------	----------------------	---------	-----------------------------	----------------------------------	------------------------------	-------------------------------	----------------------

Bottom Hole Location If Different From Surface

UL or lot No.	Section	Township	Range	Lot Idn	Feet from the	North/South line	Feet from the	East/West line	County
Dedicated Acres 39.84	Joint or Infill	Consolidation Code	Order No.						

NO ALLOWABLE WILL BE ASSIGNED TO THIS COMPLETION UNTIL ALL INTERESTS HAVE BEEN CONSOLIDATED
OR A NON-STANDARD UNIT HAS BEEN APPROVED BY THE DIVISION

	OPERATOR CERTIFICATION I hereby certify that the information contained herein is true and complete to the best of my knowledge and belief, and that this organization either owns a working interest or unleased mineral interest in the land including the proposed bottom hole location or has a right to drill this well at this location pursuant to a contract with an owner of such a mineral or working interest, or to a voluntary pooling agreement or a compulsory pooling order heretofore entered by the Division. Signature: <i>David Catnach</i> Date: <i>3/26/10</i> Printed Name: <i>David Catnach</i>
	SURVEYOR CERTIFICATION I hereby certify that the well location shown on this plat was plotted from field notes of actual surveys made by me or under my supervision, and that the same is true and correct to the best of my belief. Date Surveyed: <i>FEBRUARY 10, 2010</i> Signature & Seal of Professional Surveyor: <i>Gary L. Jones</i> Certificate No. Gary L. Jones 7977 BASIN SURVEYS

DISTRICT I
1625 N. French Dr., Hobbs, NM 88240

DISTRICT II
1301 W. Grand Avenue, Artesia, NM 88210

DISTRICT III
1000 Rio Brazos Rd., Aztec, NM 87410

DISTRICT IV
1220 S. St. Francis Dr., Santa Fe, NM 87505

RECEIVED

MAR 29 2010
State of New Mexico
Energy, Minerals and Natural Resources Department

Form C-102
Revised October 15, 2009

HOBBBS CONSERVATION DIVISION
1220 South St. Francis Dr.
Santa Fe, New Mexico 87505

Submit one copy to appropriate
District Office

WELL LOCATION AND ACREAGE DEDICATION PLAT

☐ AMENDED REPORT

API Number 30-025-39550	Pool Code 7900	Pool Name South Branson Drinkard-Abo
Property Code 306625	Property Name WALTER LYNCH	Well Number 10
OGRID No. 873	Operator Name APACHE CORPORATION	Elevation 3352'

Surface Location

UL or lot No.	Section	Township	Range	Lot Idn	Feet from the	North/South line	Feet from the	East/West line	County
LOT 3	1	22 S	37 E		990	NORTH	1800	WEST	LEA

Bottom Hole Location If Different From Surface

UL or lot No.	Section	Township	Range	Lot Idn	Feet from the	North/South line	Feet from the	East/West line	County

Dedicated Acres 40.39.84	Joint or Infill	Consolidation Code	Order No.
------------------------------------	-----------------	--------------------	-----------

NO ALLOWABLE WILL BE ASSIGNED TO THIS COMPLETION UNTIL ALL INTERESTS HAVE BEEN CONSOLIDATED
OR A NON-STANDARD UNIT HAS BEEN APPROVED BY THE DIVISION

	<p>OPERATOR CERTIFICATION</p> <p>I hereby certify that the information contained herein is true and complete to the best of my knowledge and belief, and that this organization either owns a working interest or unleased mineral interest in the land including the proposed bottom hole location or has a right to drill this well at this location pursuant to a contract with an owner of such a mineral or working interest, or to a voluntary pooling agreement or a compulsory pooling order heretofore entered by the division.</p> <p><i>David Catonach</i> 3/26/10 Signature Date</p> <p>David Catonach Printed Name</p>
	<p>SURVEYOR CERTIFICATION</p> <p>I hereby certify that the well location shown on this plat was plotted from field notes of actual surveys made by me or under my supervision, and that the same is true and correct to the best of my belief.</p> <p>GARY L. JONES FEBRUARY 18, 2010 Date Surveyed</p> <p><i>[Signature]</i> Signature & Seal of Professional Surveyor</p> <p>72403 Certificate No.</p> <p>7977 Certificate No.</p> <p>BASIN SURVEYS</p>

DISTRICT I
1625 N. French Dr., Hobbs, NM 88240

DISTRICT II
1301 W. Grand Avenue, Artesia, NM 88210

DISTRICT III
1000 Rio Brazos Rd., Aztec, NM 87410

DISTRICT IV
1220 S. St. Francis Dr., Santa Fe, NM 87505

RECEIVED

MAR 29 2010

OIL CONSERVATION DIVISION
HOBBSDEN 1220 South St. Francis Dr.
Santa Fe, New Mexico 87505

State of New Mexico
Energy, Minerals and Natural Resources Department

Form C-102
Revised October 15, 2009

Submit one copy to appropriate
District Office

WELL LOCATION AND ACREAGE DEDICATION PLAT

☐ AMENDED REPORT

API Number 30-025-39550	Pool Code 62730	Pool Name Wantz - Granite Wash
Property Code 306625	Property Name WALTER LYNCH	Well Number 10
OGRID No. 873	Operator Name APACHE CORPORATION	Elevation 3352'

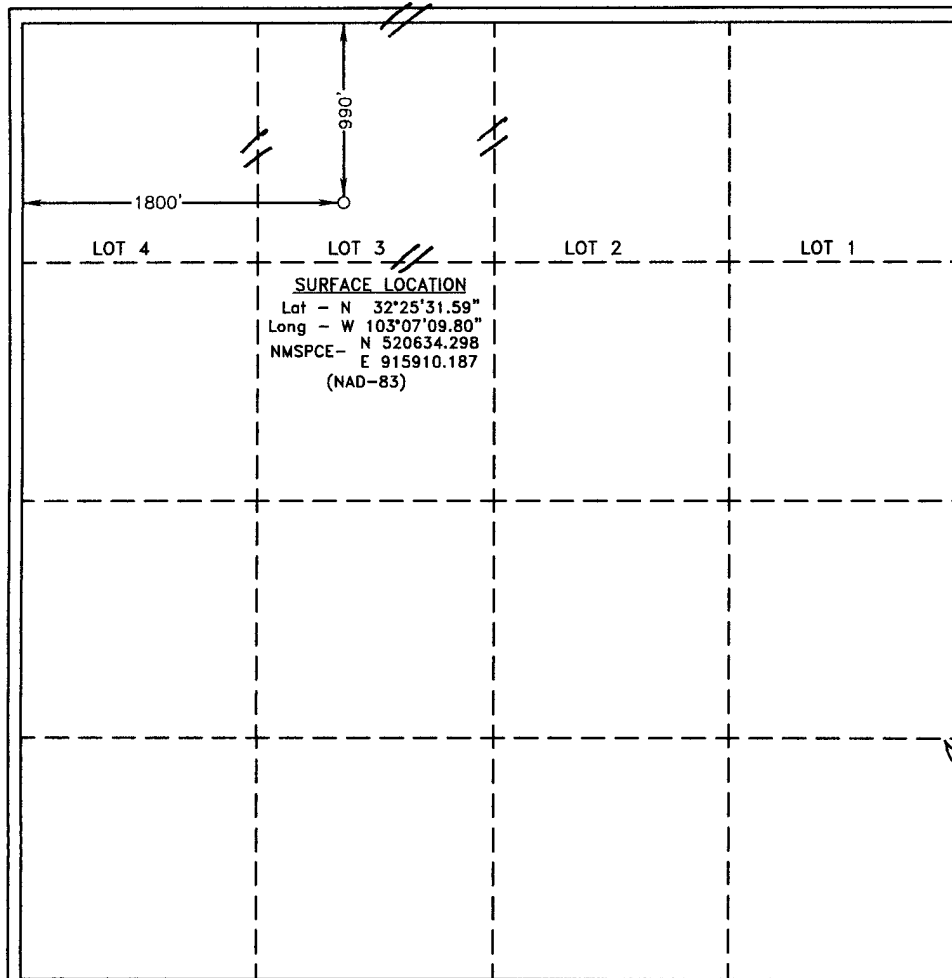
Surface Location

UL or lot No.	Section	Township	Range	Lot Idn	Feet from the	North/South line	Feet from the	East/West line	County
LOT 3	1	22 S	37 E		990	NORTH	1800	WEST	LEA

Bottom Hole Location If Different From Surface

UL or lot No.	Section	Township	Range	Lot Idn	Feet from the	North/South line	Feet from the	East/West line	County
Dedicated Acres 39.84	Joint or Infill	Consolidation Code	Order No.						

NO ALLOWABLE WILL BE ASSIGNED TO THIS COMPLETION UNTIL ALL INTERESTS HAVE BEEN CONSOLIDATED
OR A NON-STANDARD UNIT HAS BEEN APPROVED BY THE DIVISION



OPERATOR CERTIFICATION

I hereby certify that the information contained herein is true and complete to the best of my knowledge and belief, and that this organization either owns a working interest or unleased mineral interest in the land including the proposed bottom hole location or has a right to drill this well at this location pursuant to a contract with an owner of such a mineral or working interest, or to a voluntary pooling agreement or a compulsory pooling order heretofore entered by the Division.

David Catanach 3/26/10
Signature Date

David Catanach
Printed Name

SURVEYOR CERTIFICATION

I hereby certify that the well location shown on this plat was plotted from field notes of actual surveys made by me or under my supervision, and that the same is true and correct to the best of my belief.

GARY L. JONES
FEBRUARY 10, 2010
Date Surveyed

GARY L. JONES
Signature & Seal of
Professional Surveyor

22403
Certificate No.

GARY L. JONES 7977

BASIN SURVEYS