

District I
1625 N. French Dr., Hobbs, NM 88240
District II
1301 W. Grand Avenue, Artesia, NM 88210
District III
1000 Rio Brazos Road, Aztec, NM 87410
District IV
1220 S. St. Francis Dr., Santa Fe, NM 87508

RECEIVED

MAR 25 2010

HOBBSDO

State of New Mexico
Energy Minerals and Natural Resources

Oil Conservation Division
1220 South St. Francis Dr.
Santa Fe, NM 87505

Form C-101
June 16, 2008

Submit to appropriate District Office

☐ AMENDED REPORT

APPLICATION FOR PERMIT TO DRILL, RE-ENTER, DEEPEN, PLUGBACK, OR ADD A ZONE

¹ Operator Name and Address ROBERT E. LANDRETH 110 WEST LOUISIANA SUITE 404 MIDLAND, TEXAS 79701		² OGRID Number 25827
		³ API NUMBER 30-025-39720
⁴ Property Code 38089	⁵ Property Name RAINBOW "16" STATE	⁶ Well No. 2
⁷ Proposed Pool 1 DELAWARE WILDCAT		⁸ Proposed Pool 2

⁷ Surface Location

UL or lot no.	Section	Township	Range	Lot Idn	Feet from the	North/South line	Feet from the	East/West line	County
D	16	25S	35E		660'	NORTH	660'	WEST	LEA

⁸ Proposed Bottom Hole Location If Different From Surface

UL or lot no.	Section	Township	Range	Lot Idn	Feet from the	North/South line	Feet from the	East/West line	County

Additional Well Information

¹¹ Work Type Code N	¹² Well Type Code O	¹³ Cable/Rotary ROTARY	¹⁴ Lease Type Code S	¹⁵ Ground Level Elevation 3255'
¹⁶ Multiple NO	¹⁷ Proposed Depth 5000'	¹⁸ Formation DELAWARE	¹⁹ Contractor UNKNOWN	²⁰ Spud Date WHEN APPROVED

²¹ Proposed Casing and Cement Program

Hole Size	Casing Size	Casing weight/foot	Setting Depth	Sacks of Cement	Estimated TOC
26"	20"	Conductor	40'	Redi-mix	Surface
12 1/4"	8 5/8"	24#	850'	600 Sx.	Surface
7 7/8"	5 1/2"	17#	5500'	300 Sx.	Estimate 3700'

²² Describe the proposed program. If this application is to DEEPEN or PLUG BACK, give the data on the present productive zone and proposed new productive zone. Describe the blowout prevention program, if any. Use additional sheets if necessary.

SEE ATTACHED SHEET FOR DETAIL

²³ I hereby certify that the information given above is true and complete to the best of my knowledge and belief.		OIL CONSERVATION DIVISION	
Signature: <i>Joe T Janica</i>		Approved by: <i>[Signature]</i>	
Printed name: Joe T. Janica		Title: PETROLEUM ENGINEER	
Title: Permit Eng.		Approval Date: MAR 26 2010	Expiration Date:
E-mail Address: joejanica@valornet.com			
Date: 03/25/10	Phone: 575-391-8503	Conditions of Approval Attached <input type="checkbox"/>	

1. Start drilling operations by using a rat hole machine, cable tool or similar device.
2. When a rotary rig is available and contracted move in and rig up.
3. Drill 12 $\frac{1}{4}$ " hole to 850'. Run and set 850' of 8 5/8" 24# J-55 ST&C casing. Cement with 600 Sx. of Class "C" cement + $\frac{1}{4}$ #Flocele/Sx , + 2% CaCl, circulate cement to surface.
4. Drill 7 7/8" hole to 5500'. Run open hole logs from TD to 8 5/8" casing shoe, Gamma Ray Neutron from 8 5/8" casing shoe back to surface. If logs show the indication of oil or gas present, Run and set 5500' of 5 $\frac{1}{4}$ " 17# J-55 ST&C casing. Cement with 300 Sx. of 50/50/2 Class "C" POZ cement + 0.2% C-10, + 10% Salt, + 2% Gyp, + 3#/Sx of kolseal, estimate top of cement 3700'.
5. Move out drilling rig and move in completion rig and complete well as an oil well.

State of New Mexico

DISTRICT I

1625 N. FRENCH DR., HOBBS, NM 88240

Energy, Minerals and Natural Resources Department

Form C-102

Revised October 12, 2005

Submit to Appropriate District Office

State Lease - 4 Copies

Fee Lease - 3 Copies

DISTRICT II

1301 W. GRAND AVENUE, ARTESIA, NM 88210

OIL CONSERVATION DIVISION

1220 SOUTH ST. FRANCIS DR.

Santa Fe, New Mexico 87505

DISTRICT III

1000 Rio Brazos Rd., Aztec, NM 87410

DISTRICT IV

1220 S. ST. FRANCIS DR., SANTA FE, NM 87505

WELL LOCATION AND ACREAGE DEDICATION PLAT

☐ AMENDED REPORT

API Number 30-025-39720		Pool Code 96032	Pool Name WILDCAT - DELAWARE
Property Code 38089	Property Name RAINBOW 16 STATE		Well Number 2
OGRID No. 25827	Operator Name ROBERT E. LANDRETH		Elevation 3255'

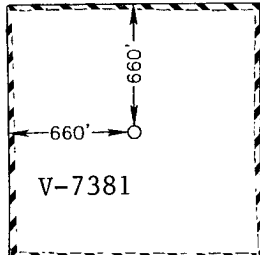
Surface Location

UL or lot No.	Section	Township	Range	Lot Idn	Feet from the	North/South line	Feet from the	East/West line	County
D	16	25-S	35-E		660	NORTH	660	WEST	LEA

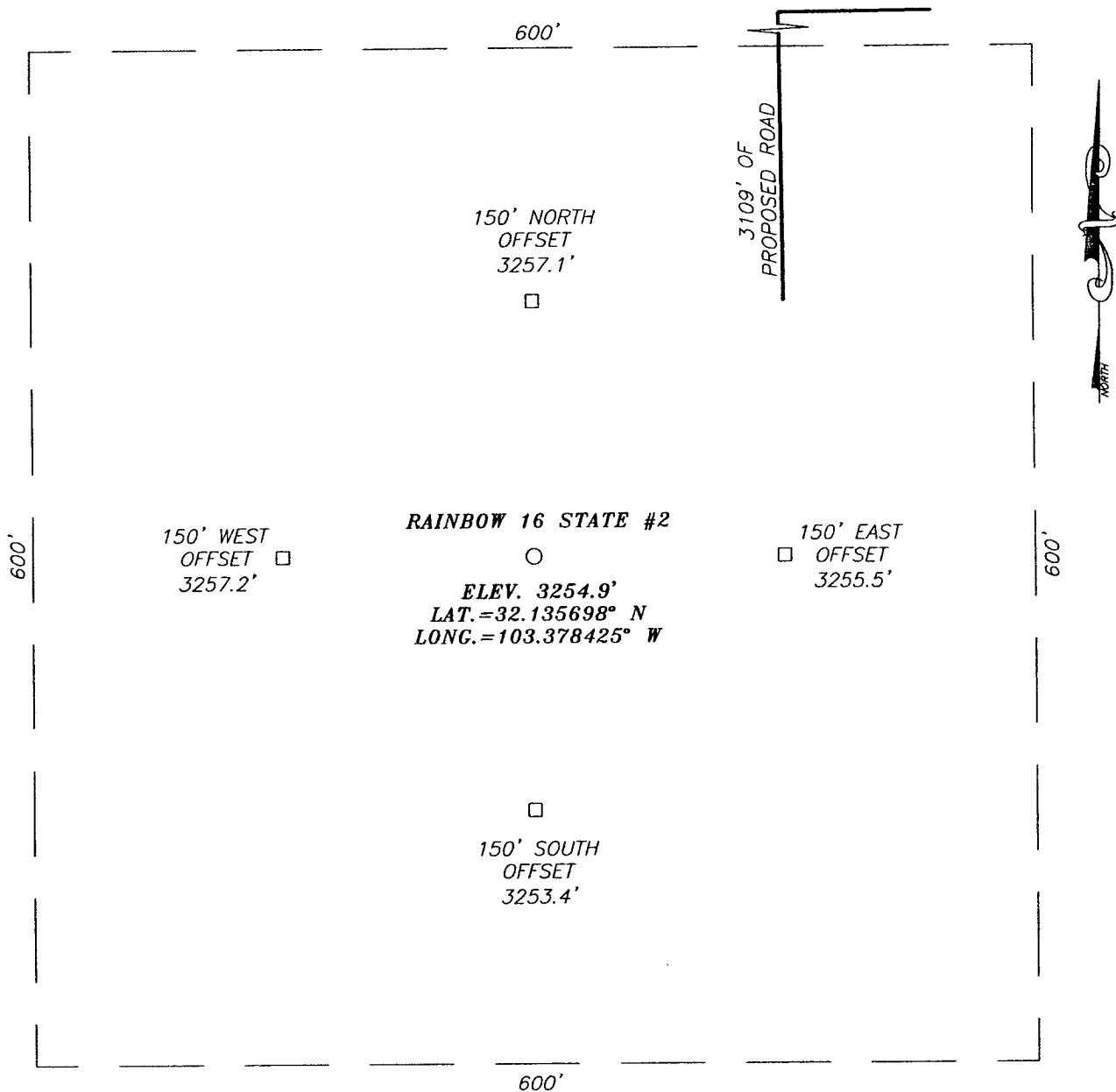
Bottom Hole Location If Different From Surface

UL or lot No.	Section	Township	Range	Lot Idn	Feet from the	North/South line	Feet from the	East/West line	County
Dedicated Acres 40	Joint or Infill	Consolidation Code	Order No.						

NO ALLOWABLE WILL BE ASSIGNED TO THIS COMPLETION UNTIL ALL INTERESTS HAVE BEEN CONSOLIDATED
OR A NON-STANDARD UNIT HAS BEEN APPROVED BY THE DIVISION

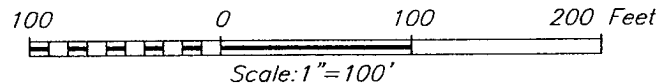
	<p>GEODETIC COORDINATES NAD 27 NME</p> <p>Y=414399.2 N X=795585.6 E</p> <p>LAT.=32.135698° N LONG.=103.378425° W</p>	<p>OPERATOR CERTIFICATION</p> <p>I hereby certify that the information herein is true and complete to the best of my knowledge and belief, and that this organization either owns a working interest or unleased mineral interest in the land including the proposed bottom hole location or has a right to drill this well at this location pursuant to a contract with an owner of such mineral or working interest, or to a voluntary pooling agreement or a compulsory pooling order heretofore entered by the division.</p> <p><i>Joe T. Janica</i> Signature Date 03/25/10 Printed Name Joe T. Janica</p>
		<p>SURVEYOR CERTIFICATION</p> <p>I hereby certify that the well location shown on this plat was plotted from field notes of actual surveys made by me or under my supervision, and that the same is true and correct to the best of my belief.</p> <p><i>Ronald J. Eidson</i> Signature & Seal of Professional Surveyor Date Surveyed 03/25/2010 LA</p>
		<p>Certificate No. RONALD EIDSON 3239</p>

SECTION 16, TOWNSHIP 25 SOUTH, RANGE 35 EAST, N.M.P.M.,
LEA COUNTY, NEW MEXICO



DIRECTIONS TO LOCATION

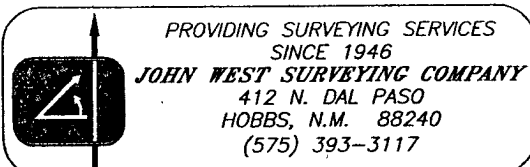
FROM THE INTERSECTION OF ST. HWY. #18 AND ST. HWY. #128 (JAL NM) GO WEST ON ST. HWY. #128 APPROX. 11.7 MILES. TURN LEFT AND GO SOUTH APPROX. 1.3 MILES TO PROPOSED ROAD SURVEY. FOLLOW ROAD SURVEY SOUTH 1870 FEET, THEN WEST 4460 FEET, THEN SOUTH 456 FEET TO THIS LOCATION.



ROBERT E. LANDRETH

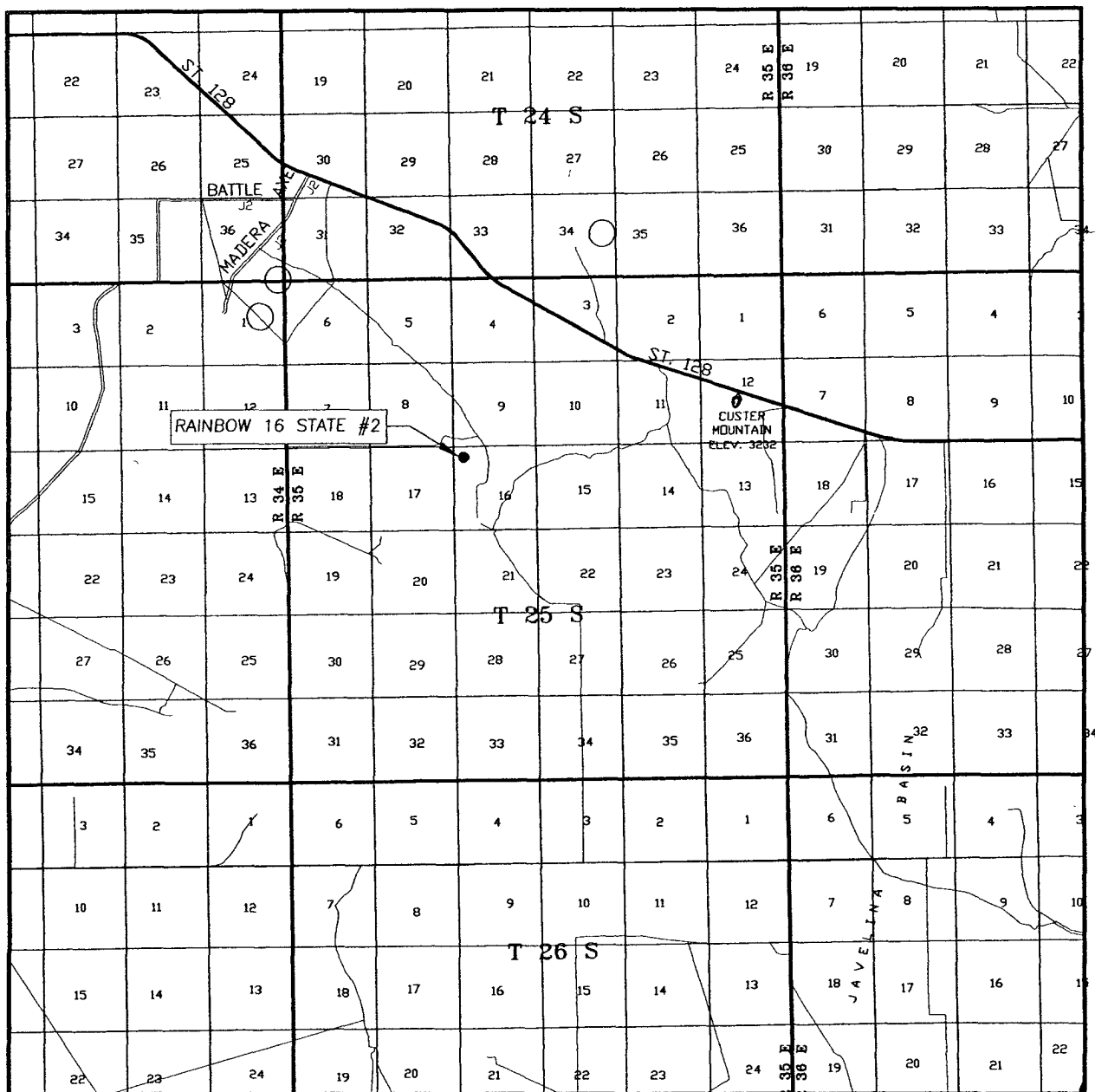
RAINBOW 16 STATE #2 WELL
LOCATED 660 FEET FROM THE NORTH LINE
AND 660 FEET FROM THE WEST LINE OF SECTION 16,
TOWNSHIP 25 SOUTH, RANGE 35 EAST, N.M.P.M.,
LEA COUNTY, NEW MEXICO.

Survey Date: 3/22/10		Sheet 1 of 1 Sheets	
W.O. Number: 10.11.0407		Dr By: LA	Rev 1:N/A
Date: 3/24/10		10110407	Scale:1"=100'



PROVIDING SURVEYING SERVICES
SINCE 1946
JOHN WEST SURVEYING COMPANY
412 N. DAL PASO
HOBBS, N.M. 88240
(575) 393-3117

VICINITY MAP



SCALE: 1" = 2 MILES

SEC. 16 TWP. 25-S RGE. 35-E

SURVEY N.M.P.M.

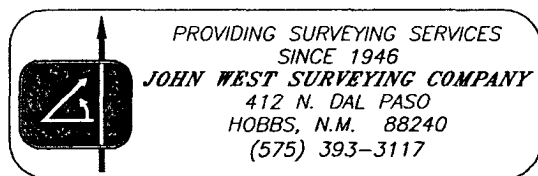
COUNTY LEA STATE NEW MEXICO

DESCRIPTION 660' FNL & 660' FWL

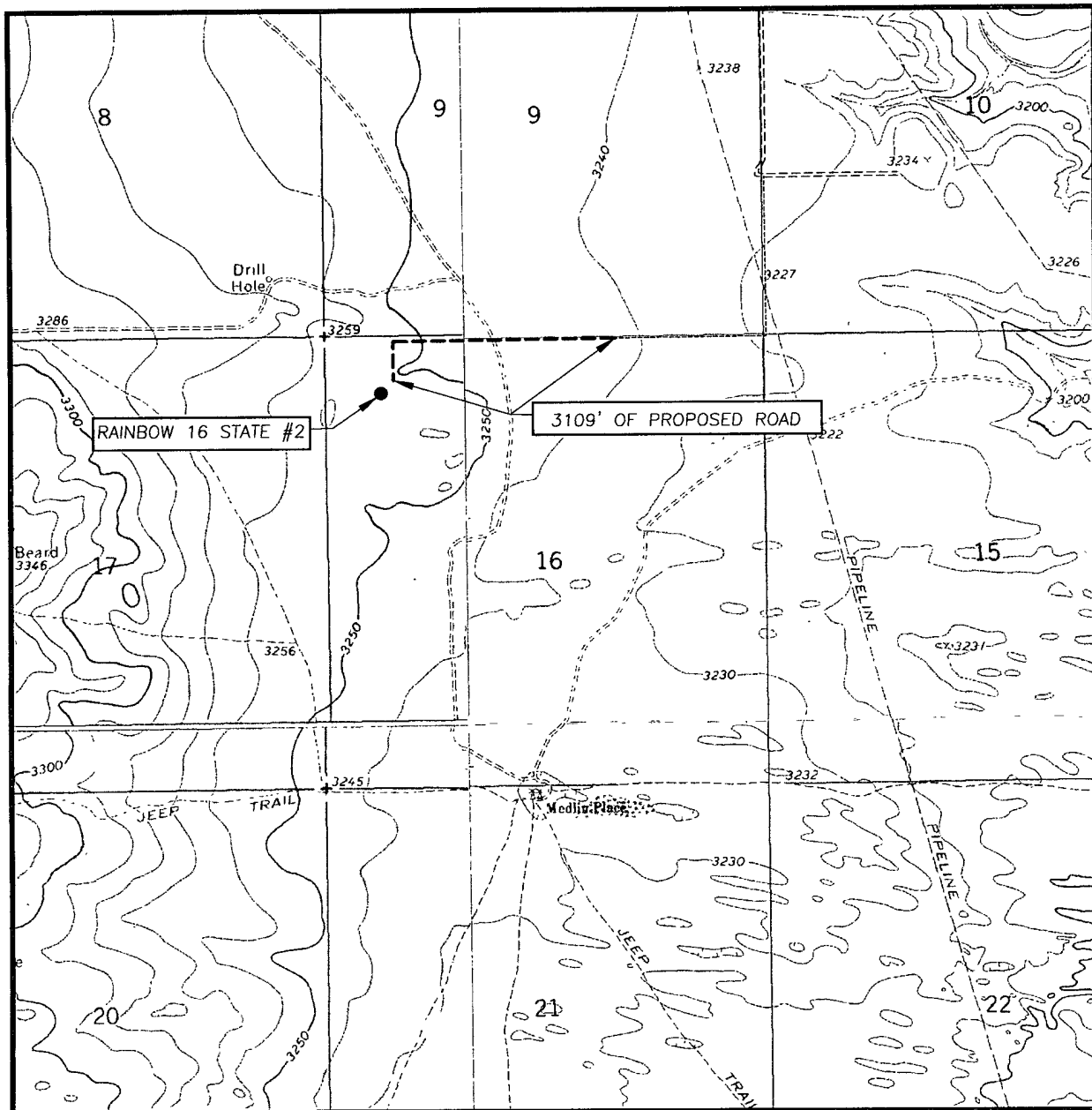
ELEVATION 3255'

OPERATOR ROBERT E. LANDRETH

LEASE RAINBOW 16 STATE



LOCATION VERIFICATION MAP



SCALE: 1" = 2000'

CONTOUR INTERVAL:
CUSTER MOUNTAIN, N.M. - 10'

SEC. 16 TWP. 25-S RGE. 35-S

SURVEY N.M.P.M.

COUNTY LEA STATE NEW MEXICO

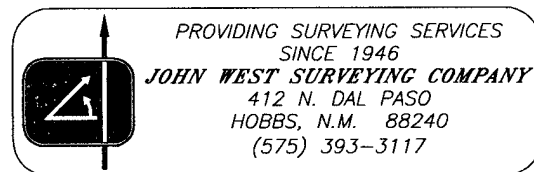
DESCRIPTION 660' FNL & 660' FWL

ELEVATION 3255'

OPERATOR ROBERT E. LANDRETH

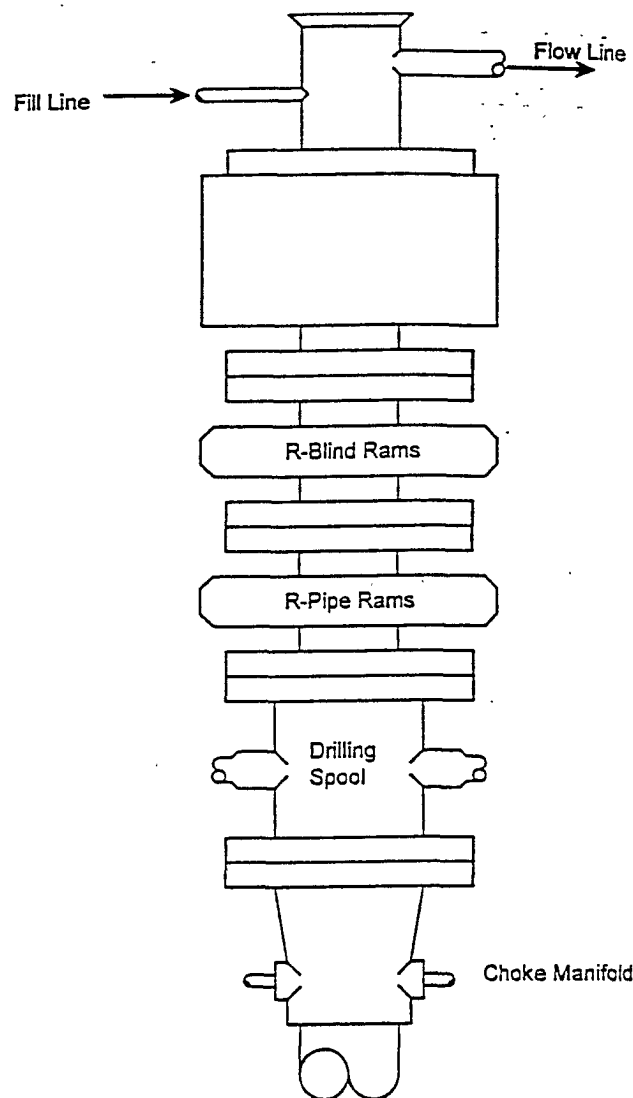
LEASE RAINBOW 16 STATE

U.S.G.S. TOPOGRAPHIC MAP
CUSTER MOUNTAIN, N.M.



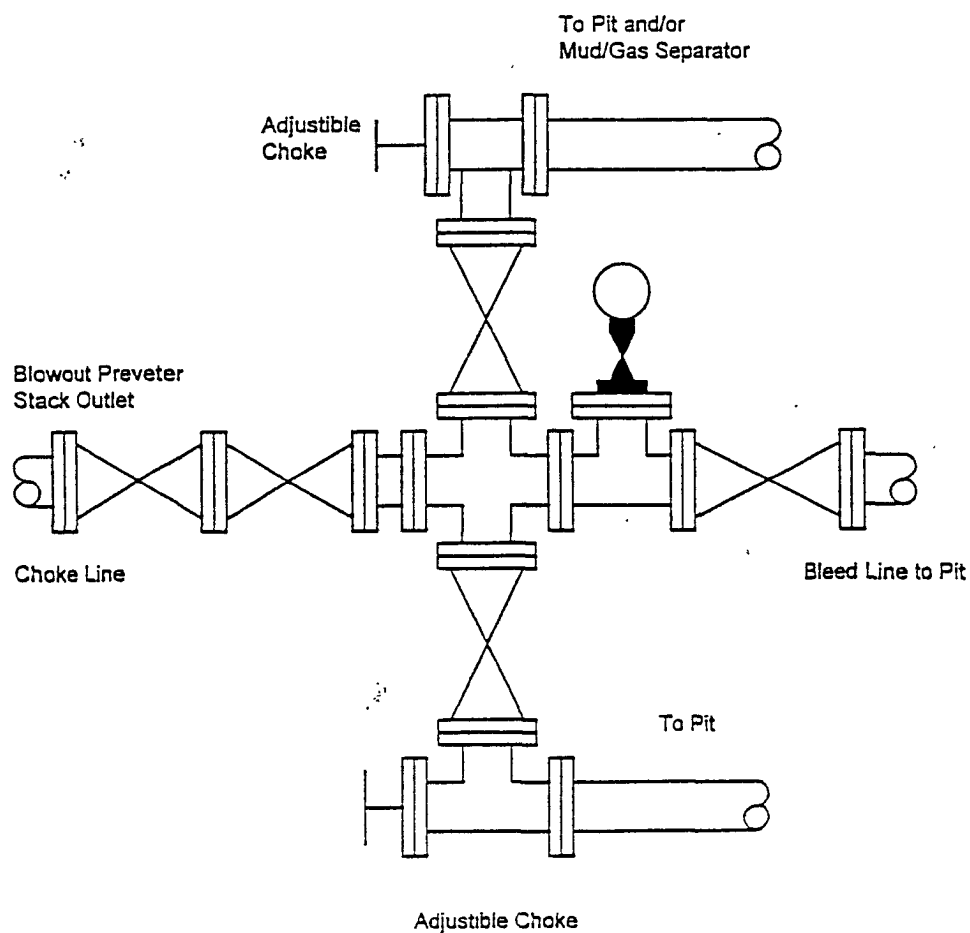
BLOWOUT PREVENTER SYSTEM

3000 PSI



Type 900 SERIES
3000 PSI WP

Choke Manifold Assembly for 5M WP System



ROBERT E. LANDRETH

Hydrogen sulfide contingency plan For drilling/workover/facility.

This well and it's anticipated facility are not expected to have Hydrogen Sulfide releases there is no known presence of Hydrogen Sulfide in this area. There are no dwellings in the close proximity of this location. However if an indication of any Hydrogen Sulfide should be encountered a plan is in place to monitor the situation. ROBERT E. LANDRETH will have a company representative available to the rig personnel throughout the drilling and the completion operation. If Hydrogen Sulfide should be detected monitoring equipment will be available for monitoring and/or testing..

**HYDROGEN SULFIDE CONTINGENCY PLAN
FOR DRILLING/WORKOVER/FACILITY**

TABLE OF CONTENTS

COVER PAGE AND REASONING	Page 1
GENERAL EMERGENCY PLAN	Page 3
EMERGENCY PROCEDURE FOR UNCONTROLLED RELEASES OF H₂S	Page 3-4
EMERGENCY NUMBERS	Page 4-5
PRODUCTION OF THE GENERAL RADIUS OF EXPOSURE RADIUS OF EXPOSURE (ROE)	Page 6
PUBLIC EVACUATION PLAN	Page 6-7
PROCEDURE FOR IGNITING AN UNCONTROLLABLE:	
PROCEDURE FOR IGNITION	Page 7
REQUIRED EMERGENCY EQUIPMENT	Page 8
USING SELF CONTAINED BREATHING AIR EQUIPMENT (SCBA)	Page 9
RESCUE & FIRST AID FOR VICTIMS OF HYDROGEN SULFIDE (H₂S) POISONING	Page 9-10
H₂S TOXIC EFFECTS	Page 11
H₂S PHYSICAL EFFECTS	Page 11

HYDROGEN SULFIDE CONTINGENCY PLAN FOR DRILLING/WORKOVER/FACILITY

General H2S Emergency Actions:

1. All personnel will immediately evacuate to an up-wind and if possible up-hill "safe area".
2. If for any reason a person must enter the hazardous area, they must wear a SCBA (Self Contained Breathing Apparatus).
3. Always use the "buddy system"
4. Isolate the well/problem if possible
5. Account for all personnel
6. Display the proper colors warning all unsuspecting personnel of the danger at hand.
7. Contact the Company personnel as soon as possible if not at the location (use the enclosed call list as instructed)

At this point the company representative will evaluate the situation and coordinate the necessary duties to bring the situation under control, and if necessary, the notification of the emergency response agencies and nearby residents.

EMERGENCY PROCEDURES FOR AN UNCONTROLLABLE RELEASE OF H2S

1. All personnel will don the self contained breathing apparatus
2. Remove all personnel to the "safe area" (always use the buddy system)
3. Contact company personnel if not on location]
4. Set in motion the steps to protect and or remove the general public to and upwind "safe area" Maintain strict security & safety procedures while dealing with the source.
5. No entry to any unauthorized personnel
6. Notify the appropriate agencies: City Police – City Street(s)
 State Police – State Rd.
 County Sheriff – County Rd.
7. Call the NMOCD

HYDROGEN SULFIDE CONTINGENCY PLAN
FOR DRILLING/WORKOVER/FACILITY

EMERGENCY CALL LIST (CONT.)

Loco Hills Police Dept		575- 677-2349
Jal Police Dept		575- -395-2501
Jal Fire Dept		575- -395-2221
Jal Ambulance		575- -395-2221
Eunice Police Dept		575- 394-0112
Eunice Fire Dept		575- -394-3258
Eunice Ambulance		575- -394-3258
Hobbs Police Dept		575- -397-3365
Hobbs Fire Dept		575- -397-9308
NMOCD	District 1 (Lea, Roosevelt, Curry)	575- -393-6161
	District 2 (Eddy, Chavez)	575- -748-1283
Lea County Information		575- -393-8203
Callaway Safety	Eddy/Lea Counties	575- -392-2973
BJ Services	Artesia	575- -746-3140
	Hobbs	575- -392-5556
Halliburton	Artesia	1-800-523-2482
	Hobbs	1-800-523-2482
Wild Well Control	Midland	432-550-6202
	Mobile	432-553-1166

HYDROGEN SULFIDE CONTINGENCY PLAN FOR DRILLING/WORKOVER/FACILITY

If at this time the supervising person determines the release of H2S cannot be contained to the site location and the general public is in harms way he will take the necessary steps to protect the workers and the public.

EMERGENCY CALL LIST: (Start and continue until ONE of these people has been contacted)

	OFFICE	MOBILE	HOME
State Police	Eddy County		575 -748-9718
State Police	Lea County		575-392-5588
Sheriff	Eddy County		575-746-2701
Sheriff	Lea County		
Emergency Medical Service (Ambulance)	Eddy County		911 or 575-746-2701
	Lea County	Eunice	911 or 575-394-3258
Emergency Response	Eddy County SERC		575-476-9620
	Lea County		
Artesia Police Dept			575-746-5001
Artesia Fire Dept			575-746-5001
Carlsbad Police Dept			575-885-2111
Carlsbad Fire Dept			575-885-3125

HYDROGEN SULFIDE CONTINGENCY PLAN FOR DRILLING/WORKOVER/FACILITY

PROTECTION OF THE GENERAL PUBLIC (ROE)

- 100 ppm at any public area (any place not associated with this site)
- 500 ppm at any public road (any road with the general public may travel)
- 100 ppm radius of ¼ mile in New Mexico will be assumed if there is insufficient data to do the calculations, and there is a reasonable expectation that H₂S could be present in concentrations greater than 100 ppm in the gas mixture

CALCULATIONS FOR THE 100 PPM (ROE) "PASQUILL-GIFFORD EQUATION"

$X = [(1.589) (\text{mole fraction}) (Q\text{-volume in std cu ft})] \text{ to the power of } (0.6258)$

CALCULATION FOR THE 500 PPM ROE:

$X = [(0.4546) (\text{mole fraction}) (Q - \text{volume in std cu ft})] \text{ to the power of } (0.6258)$

Example:

If a well/facility has been determined to have 150 / 500 ppm H₂S in the gas mixture and the well/facility is producing at a gas rate of 100 MCFPD then:

150 ppm $X = [(1.589) (.00015) (100,000 \text{ cfd})] \text{ to the power of } (.6258)$
 $X = 7 \text{ ft.}$

500 ppm $X = [(0.4546) (.0005) (100,000 \text{ cfd})] \text{ to the power of } (.6258)$
 $X = 3.3 \text{ ft.}$

(These calculations will be forwarded to the appropriate District NMOCD office when Applicable)

PUBLIC EVACUATION PLAN:

- Notification of the emergency response agencies of the hazardous condition and implement evacuation procedures.
- A trained person in H₂S safety shall monitor with detection equipment the H₂S concentration, wind and area exposure (ROE). This person will determine the outer perimeter of the hazardous area. The extent of the evacuation area will be determined from the data being collected. Monitoring shall continue until the situation has been resolved. (All monitoring equipment shall be UL approved, for use in class 1 groups A, B, C & D, Division 1, hazardous locations. All monitor will have a minimum capability of measuring H₂S, oxygen and flammable values.)

HYDROGEN SULFIDE CONTINGENCY PLAN FOR DRILLING/WORKOVER/FACILITY

- Law enforcement shall be notified to set up necessary barriers and maintain such for the duration of the situation as well as aid in the evacuation procedure.
- The company supervising personnel shall stay in communication with all agencies through out the duration of the situation and inform such agencies when the situation has been contained and the effected area(s) is safe to enter.

PROCEDURE FOR IGNITING AN UNCONTROLLABLE CONDITION:

1. Human life and/or property are in danger.
2. There is no hope of bringing the situation under control with the prevailing conditions at the site.

INSTRUCTION FOR IGNITION:

1. Two people are required. They must be equipped with positive pressure, self contained breathing apparatus and a "D" ring style full body, OSHA approved safety harness. Non flammable rope will be attached.
2. One of the people will be qualified safety person who will test the atmosphere for H₂S, oxygen and LFL. The other person will be the company supervisor; he is responsible for igniting the well.
3. Ignite up wind from a distance no closer than necessary. Make sure that where you ignite from has the maximum escape avenue available. A 25 mm flare gun shall be used, with a \pm 500 ft. range to ignite the gas.
4. Prior to ignition, make a final check with combustible gases.
5. Following ignition, continue with the emergency actions & procedures as before.

HYDROGEN SULFIDE CONTINGENCY PLAN FOR DRILLING/WORKOVER/FACILITY

REQUIRED EMERGENCY EQUIPMENT:

1. **Breathing apparatus:**
 - Rescue packs (SCBA) – 1 unit shall be placed at each breathing area, 2 shall be stored in the safety trailer.
 - Work/Escape packs – 4 packs shall be stored on the rig floor with sufficient air hose not to restrict work activity
 - Emergency Escape Packs – 4 packs shall be stored in the doghouse for emergency evacuation.
2. **Signage & Flagging:**
 - One color code condition sign will be placed at the entrance to the site reflection the possible conditions at the site.
 - A colored conditioned flag will be on display, reflecting the condition at the site at the time.
3. **Briefing Area:**
 - Two perpendicular areas will be designated by signs and readily accessible.
4. **Wind Socks:**
 - Two windsocks will be placed in strategic locations, visible from all angles.
5. **H2S Detectors & Alarms:**
 - The stationary detector with three sensors will be placed in the upper dog house if equipped, set to visually alarm @ 10 ppm and audible at 14 ppm. Calibrate a minimum of every 30 days or as needed. The sensors will be placed in the following places: (Gas sample tubes will be stored in the safety trailer)
 - Rig Floor
 - Bell Nipple
 - End of flow line or where well bore fluid are being discharged.
6. **Auxiliary Rescue Equipment:**
 - Stretcher
 - Two OSHA full body harness
 - 100 ft. 5/8 inch OSHA approved rope.
 - 1 – 20# class ABC fire extinguisher
 - Communication via cell phones on location and vehicles on location.

HYDROGEN SULFIDE CONTINGENCY PLAN FOR DRILLING/WORKOVER/FACILITY

USING SELF CONTAINED BREATHING AIR EQUIPMENT (SCBA):

- (SCBA) SHOULD BE WORN WHEN ANY OF THE FOLLOWING ARE PERFORMED:
 - Working near the top or on the top of a tank
 - Disconnecting any line where H₂S can reasonably be expected
 - Sampling air in the area to determine if toxic concentration of H₂S can exist.
 - Working in areas where over 10 ppm on H₂S has been detected.
 - At any time there is a doubt as the level of H₂S in the area.
- All personnel shall be trained in the use of SCBA prior to working in a potentially hazardous location.
- Facial hair and standard eyeglasses are not allowed with SCBA.
- Contact lenses are never allowed with SCBA.
- Air quality shall be continuously checked during the entire operation.
- After each use, the SCBA unit shall be cleaned, disinfected, serviced and inspected.
- All SCBA shall be inspected monthly.

RESCUE AND FIRST AID FOR VICTIMS OF HYDROGEN SULFIDE (H₂S) POISONING:

- Do not panic
- Remain calm and think
- Get on the breathing apparatus

HYDROGEN SULFIDE CONTINGENCY PLAN FOR DRILLING/WORKOVER/FACILITY

- Remove the victim to the safe breathing area as quickly as possible. Up wind and uphill from source or cross wind to achieve upwind.
- Notify emergency response personnel.
- Provide artificial respiration and or CPR, as necessary.
- Remove all contaminated clothing to avoid further exposure.
- A minimum of two personnel on location shall be trained in CPR and First Aid.

HYDROGEN SULFIDE CONTINGENCY PLAN FOR DRILLING/WORKOVER/FACILITY

H₂S is extremely toxic. The acceptable ceiling for eight hours of exposure is 10 ppm, which is .001% by volume. H₂S is approximately 20% heavier than air (Sp. Gr = 1.19) (Air = 1) and colorless. It forms an explosive mixture with air between 4.3% and 46%. By volume hydrogen sulfide is almost as toxic as hydrogen cyanide and is 5-6 times more toxic than carbon monoxide.

COMMON NAME	CHEMICAL ABBREV.	SPECIFIC GRVTY.	THRESHOLD LIMITS	HAZARDOUS LIMITS	LETHAL CONCENTRATIONS
Hydrogen Sulfide	H ₂ S	1.19	10 ppm 15 ppm	100 ppm/hr	600ppm
Hydrogen Cyanide	HCN	0.94	10 ppm	150 ppm/hr	300 ppm
Sulfur Dioxide	SO ₂	2.21	2 ppm	N/A	1000 ppm
Chlorine	CL ₂	2.45	1 ppm	4 ppm/hr	1000 ppm
Carbon Monoxide	CO	0.97	50 ppm	400 ppm/hr	1000 ppm
Carbon Dioxide	CO ₂	1.52	5000 ppm	5%	10%
Methane	CH ₄	0.55	90,000	Combustible @ 5%	N/A

Threshold Limit: Concentrations at which it is believed that all workers may be repeatedly exposed, day after day without adverse effects.

Hazardous Limit: Concentrations that may cause death.

Concentrations: Concentrations that will cause death with short term exposure.

Threshold Limit: NIOSH guide to chemical hazards
(10 ppm)

PHYSICAL EFFECTS OF HYDROGEN SULFIDE:

CONCENTRATION	PHYSICAL EFFECTS
.001% 10 ppm	Obvious and unpleasant odor. Safe for 8 hr. exposure
.005% 50 ppm	Can cause some flu like symptoms and can cause pneumonia.
.01% 100 ppm	Kills the sense of smell in 3-15 minutes. May irritate the eyes and throat.
.02% 200 ppm	Kills the sense of smell rapidly. Severely irritates the eyes and throat. Severe flu-like symptoms after 4 or more hours. May cause lung damage and or death.
.06% 600 ppm	Loss of consciousness quickly, death will result if not rescued promptly.