

RECEIVED
Form 100-10
(August 2007)

APR 01 2010
HOBBSOCD

UNITED STATES
DEPARTMENT OF THE INTERIOR
BUREAU OF LAND MANAGEMENT

OCD Hobbs

ATS-10-221

FORM APPROVED
OMB No 1004-0137
Expires July 31, 2010

APPLICATION FOR PERMIT TO DRILL OR REENTER

Split Estate

1a. Type of work: <input checked="" type="checkbox"/> DRILL <input type="checkbox"/> REENTER		7. If Unit or CA Agreement, Name and No. Warren Unit
1b. Type of Well: <input checked="" type="checkbox"/> Oil Well <input type="checkbox"/> Gas Well <input type="checkbox"/> Other <input type="checkbox"/> Single Zone <input type="checkbox"/> Multiple Zone		8. Lease Name and Well No. Warren Unit #345
2. Name of Operator ConocoPhillips Company		9. API Well No. 30-025-39726
3a. Address P.O. Box 51810 Midland, Texas 79710-1810	3b. Phone No. (include area code) 432-688-6913	10. Field and Region of Exploration Warren: Drinkard, Blinebry, Tubb
4. Location of Well (Report location clearly and in accordance with any State requirements. *) At surface 2540' FSL & 1330' FWL, UL K, Section 27, T20S, R38E At proposed prod. zone 2540' FSL & 1330' FWL, UL K, Section 27, T20S, R38E		11. Sec., T. R. M. or Blk. and Survey or Area Section 27, T20S, R38E
14. Distance in miles and direction from nearest town or post office* Approx 12 miles South of Hobbs New Mexico		12. County or Parish Lea County
15. Distance from proposed* location to nearest property or lease line, ft. (Also to nearest drig. unit line, if any)		13. State NM
16. No. of acres in lease 5120	17. Spacing Unit dedicated to this well 40 Acres	
18. Distance from proposed location* to nearest well, drilling, completed, applied for, on this lease, ft. 871'	19. Proposed Depth 7157'	20. BLM/BIA Bond No. on file ES 0085
21. Elevations (Show whether DF, KDB, RT, GL, etc.) 3540' GL	22. Approximate date work will start* 07/02/2010	23. Estimated duration 10 Days

24. Attachments

The following, completed in accordance with the requirements of Onshore Oil and Gas Order No.1, must be attached to this form:

- Well plat certified by a registered surveyor.
- A Drilling Plan.
- A Surface Use Plan (if the location is on National Forest System Lands, the SUPO must be filed with the appropriate Forest Service Office)
- Bond to cover the operations unless covered by an existing bond on file (see Item 20 above).
- Operator certification
- Such other site specific information and/or plans as may be required by the BLM.

25. Signature 	Name (Printed/Typed) Justin C. Firkins	Date 01/12/2010
Title Regulatory Specialist		
Approved by (Signature) 	Name (Printed/Typed)	Date 3/30/10
Title FIELD MANAGER		Office CARLSBAD FIELD OFFICE

Application approval does not warrant or certify that the applicant holds legal or equitable title to those rights in the subject lease which would entitle the applicant to conduct operations thereon.
Conditions of approval, if any, are attached.

APPROVAL FOR TWO YEARS

Title 18 U.S.C. Section 1001 and Title 43 U.S.C. Section 1212, make it a crime for any person knowingly and willfully to make to any department or agency of the United States any false, fictitious or fraudulent statements or representations as to any matter within its jurisdiction.

(Continued on page 2)

Approval Subject to General Requirements
& Special Stipulations Attached

Lea County Controlled Water Basin

SEE ATTACHED FOR
CONDITIONS OF APPROVAL

1. J
2. French Jr., Hobbs, NM 88240

State of New Mexico
Energy, Minerals & Natural Resources Department

Form C-102
Revised October 12, 2005
Submit to Appropriate District Office
State Lease - 4 Copies
Fee Lease - 3 Copies

3. J
4. Grand Avenue, Artesia, NM 88201

RECEIVED
OIL CONSERVATION DIVISION
1220 South St. Frances Dr.
Santa Fe, NM 87505
APR 01 2010
HOBBSUCD

5. J
6. Brazos Rd., Aztec, NM 87410

7. J
8. St. Frances Dr., Santa Fe, NM 87505

☐ AMENDED REPORT

WELL LOCATION AND ACREAGE DEDICATION PLAT

API Number 30-025-39726	Pool Code 63080	Pool Name WARREN-Drinkard
Property Code 31488	Property Name WARREN UNIT	Well Number 345
OGRIID No. 217817	Operator Name CONOCOPHILLIPS	Elevation 3540'

Surface Location

Lot No.	Section	Township	Range	Lot Idn	Feet from the	North/South line	Feet from the	East/West line	County
K	27	20 S	38 E		2540	SOUTH	1330	WEST	LEA

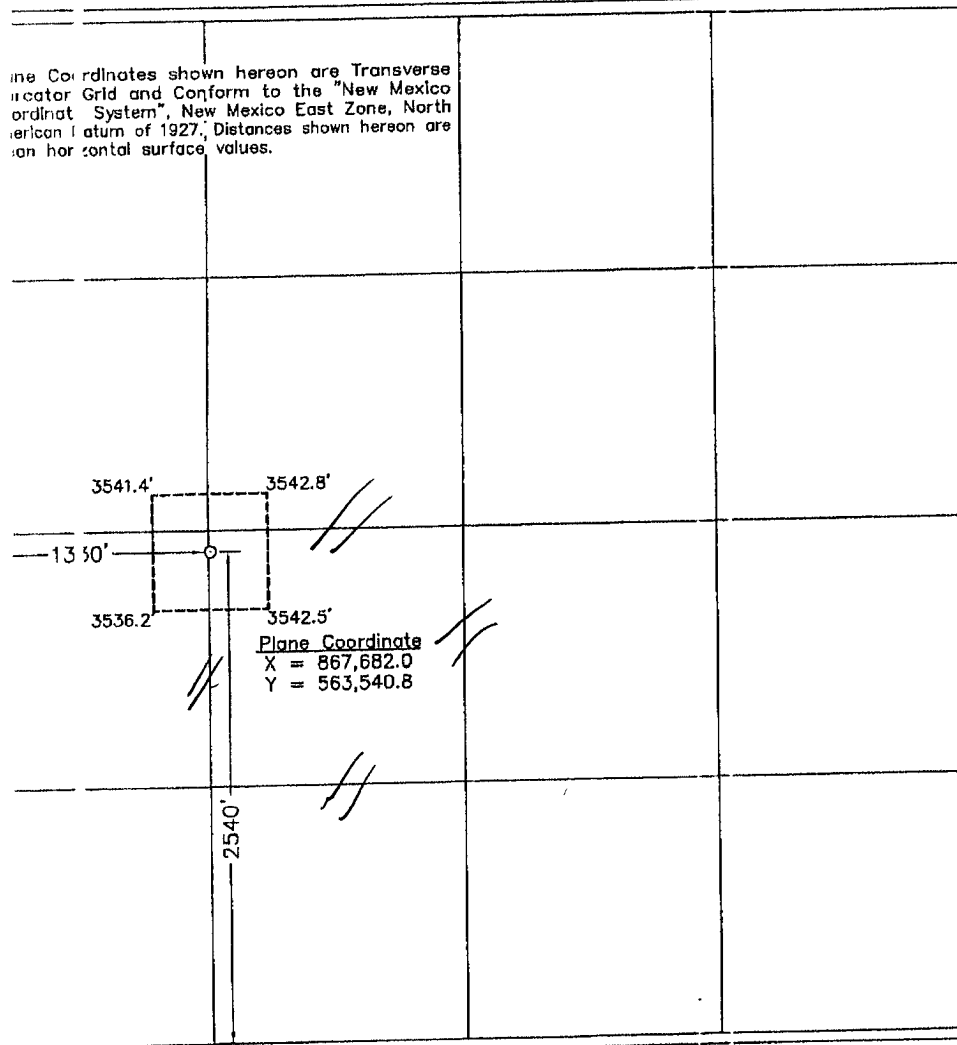
Bottom Hole Location If Different From Surface

Lot No.	Section	Township	Range	Lot Idn	Feet from the	North/South line	Feet from the	East/West line	County

Acres 40	Joint or Infill	Consolidation Code	Order No.
--------------------	-----------------	--------------------	-----------

ALLOWABLE WILL BE ASSIGNED TO THIS COMPLETION UNTIL ALL INTERESTS HAVE BEEN CONSOLIDATED OR A NON-STANDARD UNIT HAS BEEN APPROVED BY THE DIVISION

Plane Coordinates shown hereon are Transverse Indicator Grid and Conform to the "New Mexico Coordinate System", New Mexico East Zone, North American Datum of 1927. Distances shown hereon are on horizontal surface values.



OPERATOR CERTIFICATION

I hereby certify the information contained herein is true and complete to the best of my knowledge and belief, and that this organization either owns a working interest or unleased mineral interest in the land including the proposed bottom hole location or has a right to drill this well at this location pursuant to a contract with an owner of such a mineral or working interest, or to a voluntary pooling agreement or a compulsory pooling order heretofore entered by the division.

Justin C. Frickins
Signature Date
Justin C. Frickins
Printed Name

SURVEYOR CERTIFICATION

I hereby certify that the well location shown on this plat was plotted from field notes of actual surveys made by me or under my supervision and that the same is true and correct to the best of my belief.

December 2, 2008

Date of Survey
Signature & Seal of Professional Surveyor

W.O. N...
Signature
W.O. N...
Printed Name
Certificate No. **12185**

DISTRICT I
1825 N. French Dr., Hobbs, NM 88240

State of New Mexico
Energy, Minerals & Natural Resources Department

Form C-102
Revised October 12, 2005
Submit to Appropriate District Office
State Lease - 4 Copies
Fee Lease - 3 Copies

DISTRICT II
1301 W. Grand Avenue, Artesia, NM 88210

RECEIVED
OIL CONSERVATION DIVISION
1220 South St. Frances Dr.
Santa Fe, NM 87505

DISTRICT III
1000 Rio Brazos Rd., Aztec, NM 87410

DISTRICT IV
1220 S. St. Francis Dr., Santa Fe, NM 87505

APR 01 2010
HOBBSOCD

☐ AMENDED REPORT

WELL LOCATION AND ACREAGE DEDICATION PLAT

API Number 30-025-39726	Pool Code 62956	Pool Name WARREN-BLINEBRY/TUBB O+G
Property Code 31493	Property Name WARREN UNIT Blinebry-Tubb WF	Well Number 345
OGRID No. 217817	Operator Name CONOCOPHILLIPS	Elevation 3540'

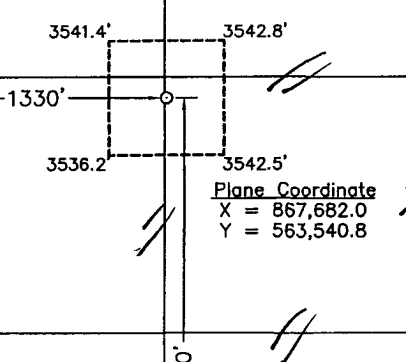
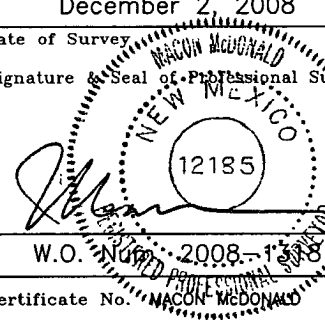
Surface Location

UL or lot No.	Section	Township	Range	Lot Idn	Feet from the	North/South line	Feet from the	East/West line	County
K	27	20 S	38 E		2540	SOUTH	1330	WEST	LEA

Bottom Hole Location If Different From Surface

UL or lot No.	Section	Township	Range	Lot Idn	Feet from the	North/South line	Feet from the	East/West line	County
Dedicated Acres 40	Joint or Infill	Consolidation Code	Order No.						

NO ALLOWABLE WILL BE ASSIGNED TO THIS COMPLETION UNTIL ALL INTERESTS HAVE BEEN CONSOLIDATED OR A NON-STANDARD UNIT HAS BEEN APPROVED BY THE DIVISION

<p>NOTE:</p> <p>1) Plane Coordinates shown hereon are Transverse Mercator Grid and Conform to the "New Mexico Coordinate System", New Mexico East Zone, North American Datum of 1927. Distances shown hereon are mean horizontal surface values.</p>		<p>OPERATOR CERTIFICATION</p> <p>I hereby certify the information contained herein is true and complete to the best of my knowledge and belief, and that this organization either owns a working interest or released mineral interest in the land including the proposed bottom hole location or has a right to drill this well at this location pursuant to a contract with an owner of such a mineral or working interest, or to a voluntary pooling agreement or a compulsory pooling order heretofore entered by the division.</p> <p><i>Justin C. Friggins</i> Signature Date JUSTIN C. FRIGGINS Printed Name</p>	
		<p>SURVEYOR CERTIFICATION</p> <p>I hereby certify that the well location shown on this plat was plotted from field notes of actual surveys made by me or under my supervision and that the same is true and correct to the best of my belief.</p> <p>December 2, 2008 Date of Survey Signature & Seal of Professional Surveyor  W.O. Nuff Certificate No. 12185</p>	