

UNITED STATES  
DEPARTMENT OF THE INTERIOR  
BUREAU OF LAND MANAGEMENT

BLM-CARLSBAD FIELD OFFICE  
RECEIVED

FORM APPROVED  
OMB NO. 1004-0135  
EXPIRES: NOVEMBER 30, 2000

SUNDRY NOTICES AND REPORTS ON WELLS APR 05 2010

Do not use this form for proposals to drill or to re-enter an abandoned well. Use Form 3160-3 (APD) for such proposals.

SUBMIT IN TRIPLICATE

1a. Type of Well ☒ Oil Well ☐ Gas Well ☐ Other \_\_\_\_\_

2. Name of Operator ☒  
Devon Energy Production Company, LP

3. Address and Telephone No.  
20 North Broadway, Oklahoma City, OK 73102 405-552-8198

4. Location of Well (Report location clearly and in accordance with Federal requirements)\*  
660' FNL 1980' FEL, Unit B  
Sec 24 T18S R33E

5. Lease Serial No.

LC-063645 ☒

6. If Indian, Allottee or Tribe Name

7. Unit or CA Agreement Name and No.

8. Well Name and No.

Great Bear Park 24 Fed 3 ☒

9. API Well No.

30-025-39731

10. Field and Pool, or Exploratory

Delaware ☒

12. County or Parish 13. State

Lea ☒

NM

CHECK APPROPRIATE BOX(s) TO INDICATE NATURE OF NOTICE, REPORT, OR OTHER DATA

TYPE OF SUBMISSION

TYPE OF ACTION

☒ Notice of Intent

☐ Subsequent Report

☐ Final Abandonment Notice

☐ Acidize

☐ Alter Casing

☐ Casing Repair

☒ Change Plans

☐ Convert to Injection

☐ Deepen

☐ Fracture Treat

☐ New Construction

☐ Plug and Abandon

☐ Plug Back

☐ Production (Start/Resume)

☐ Reclamation

☐ Recomplete

☐ Temporarily Abandon

☐ Water Disposal

☐ Water Shut-Off

☐ Well Integrity

☐ Other \_\_\_\_\_

13. Describe Proposed or Completed Operations (Clearly state all pertinent details, and give pertinent dates, including estimated date of starting any proposed work and approximate duration thereof. If the proposal deepens directionally or recompletes horizontally, give subsurface location and measured and true vertical depths of all pertinent markers and zones. Attach the Bond under which the work will be performed or provide the Bond No. on file with BLM/BIA. Required subsequent reports shall be filed within 30 days following completion of the involved operations. If the operation results in a multiple completion or recompletion in a new interval, a Form 3160-4 shall be filed once testing has been completed. Final Abandonment Notices shall be filed only after all requirement, including reclamation, have been completed, and the operator has determined that the site is ready for final inspection.)

Devon Energy Production Company LP, respectfully requests approval of the following rig change.

Rig change to Patterson # 80 (see attached rig layout)

Limit pad to 170' on closed loop side of Just 12-21-09

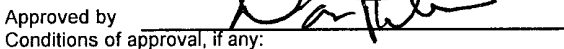
14. I hereby certify that the foregoing is true and correct

Signature 

Name Norvella Adams  
Title Sr. Staff Engineering Technician

Date 12/14/2009

(This space for Federal or State Office use)

Approved by   
Conditions of approval, if any:

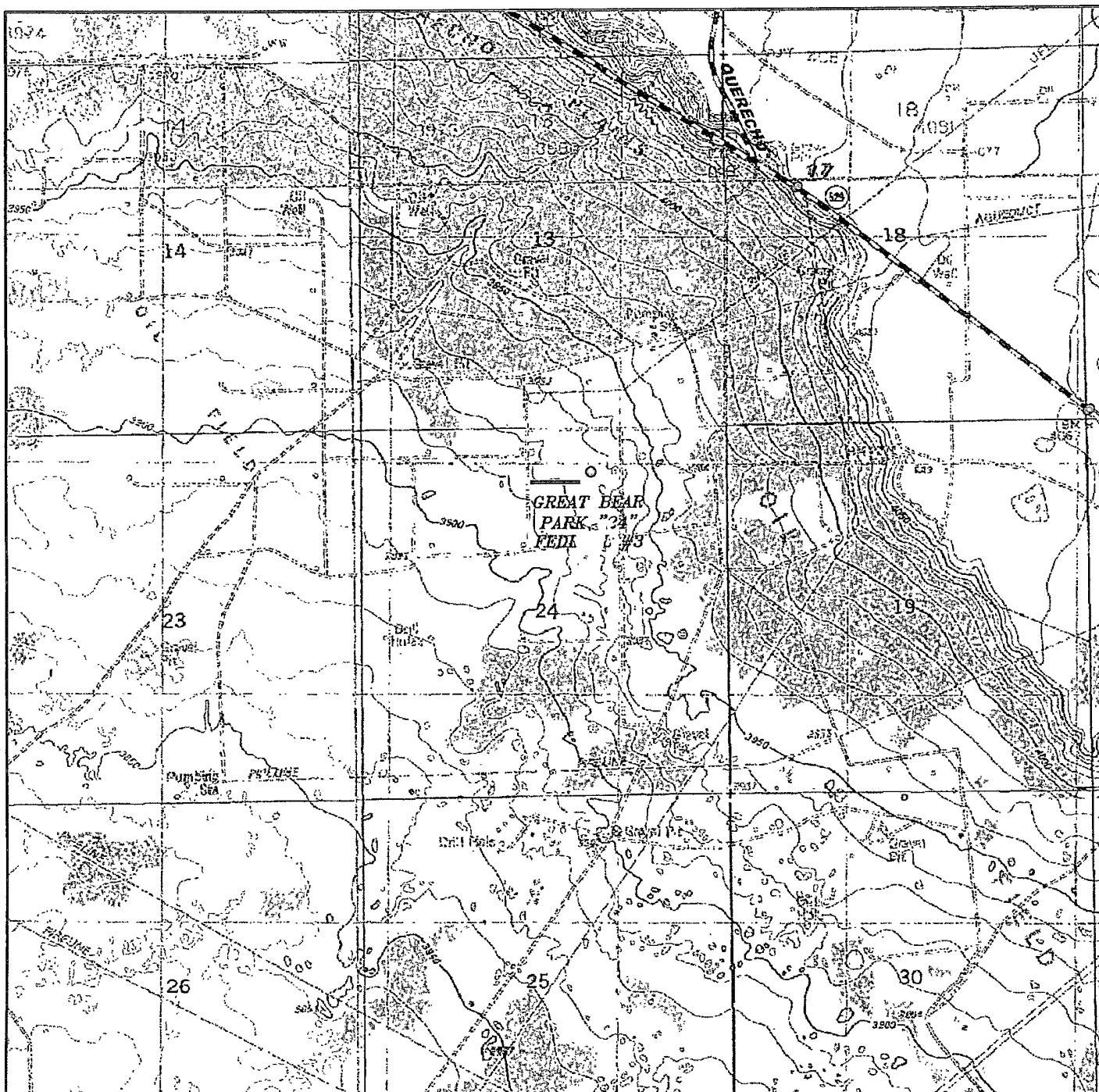
Title G. FIELD MANAGER

Date 12-10-09

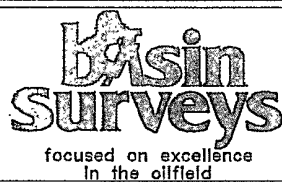
CARLSBAD FIELD OFFICE

This Form 3160-5, Section 1001, makes it a crime for any person knowingly and willfully to make any department or agency of the United States any false, malicious or fraudulent statements or representations to any matter within its jurisdiction.

\*See Instruction on Reverse Side



GREAT BEAR PARK "24" FED #3  
 Located 660' FNL and 1980' FEL  
 Section 24, Township 18 South, Range 33 East,  
 N.M.P.M., Lea County, New Mexico.



P.O. Box 1786  
 1120 N. West County Rd.  
 Hobbs, New Mexico 88241  
 (575) 393-7316 - Office  
 (575) 392-2206 - Fax  
 basinsurveys.com

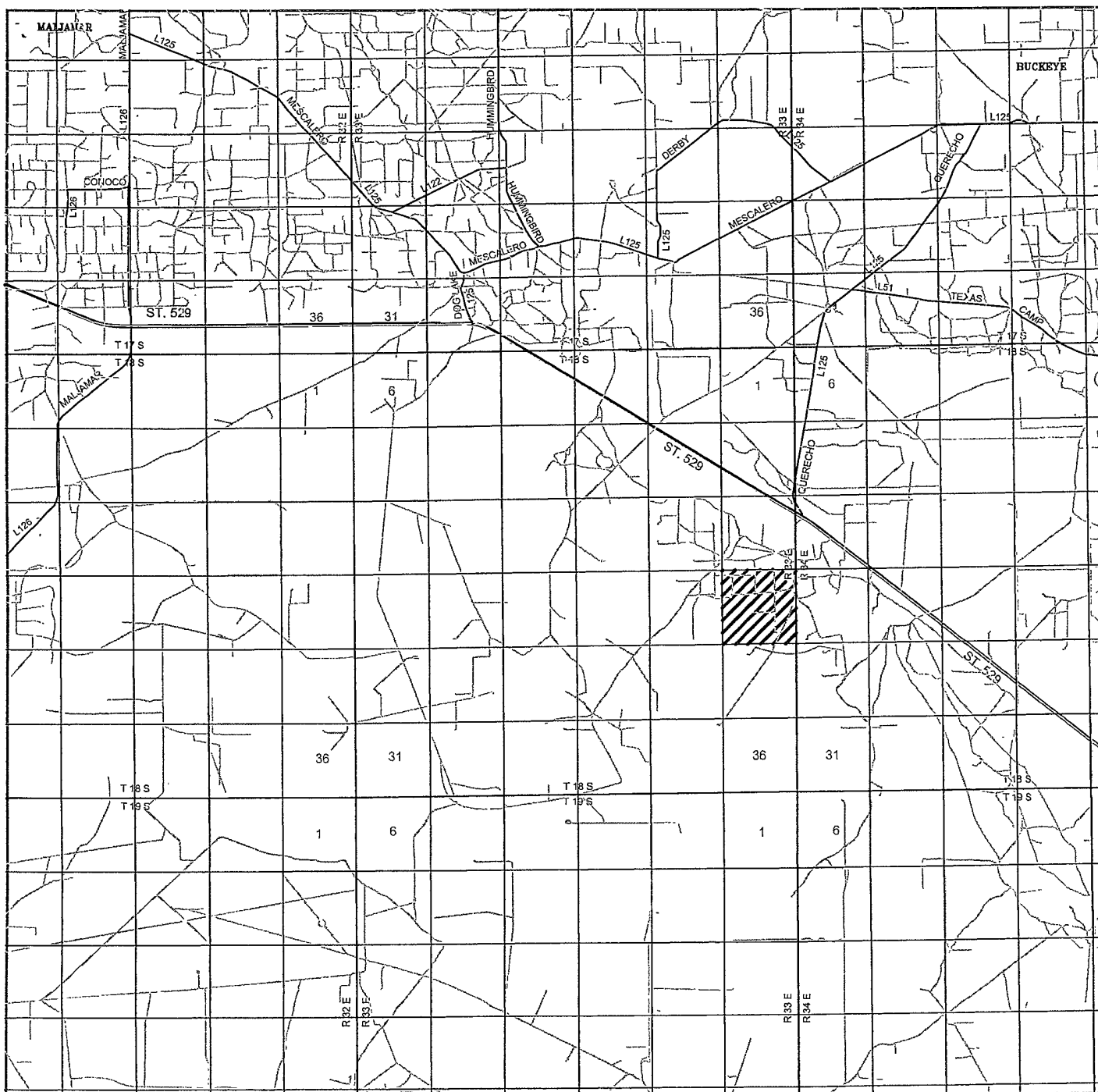
W.O. Number: JMS 21681

Survey Date: 09-04-2009

Scale: 1" = 2000'

Date: 09-10-2009

DEVON ENERGY  
 PRODUCTION  
 COMPANY, L.P.



GREAT BEAR PARK "24" FED #3  
 Located 660' FNL and 1980' FEL  
 Section 24, Township 18 South, Range 33 East,  
 N.M.P.M., Lea County, New Mexico.



focused on excellence  
 in the oilfield

P.O. Box 1786  
 1120 N. West County Rd.  
 Hobbs, New Mexico 88241  
 (575) 393-7316 - Office  
 (575) 392-2206 - Fax  
 basinsurveys.com

W.O. Number: JMS 21681

Survey Date: 09-04-2009

Scale: 1" = 2 Miles

Date: 09-10-2009

DEVON ENERGY  
 PRODUCTION  
 COMPANY, L.P.



SECTION 24, TOWNSHIP 18 SOUTH, RANGE 33 EAST, N.M.P.M.,  
LEA COUNTY, NEW MEXICO.

3928.4' 600' 3937.7'

150' NORTH  
OFF SET  
3930.4'

DEVON ENERGY PRODUCTION COMPANY, L.P.  
GREAT BEAR PARK "24" FEDI #3  
ELEV. - 3930'

150' WEST OFF SET 3928.2' 150' EAST OFF SET 3931.7'

Lat - N 32°44'19.25"  
Long - W 103°36'51.96"  
NMSPCE- N 633210.529  
E 762385.476  
(NAD-83)

150' SOUTH  
OFF SET  
3928.6'

PROPOSED LEASE ROAD 718.1'

3923.1' 600' 3932.4'

200 0 200 400 FEET  
SCALE: 1" = 200'

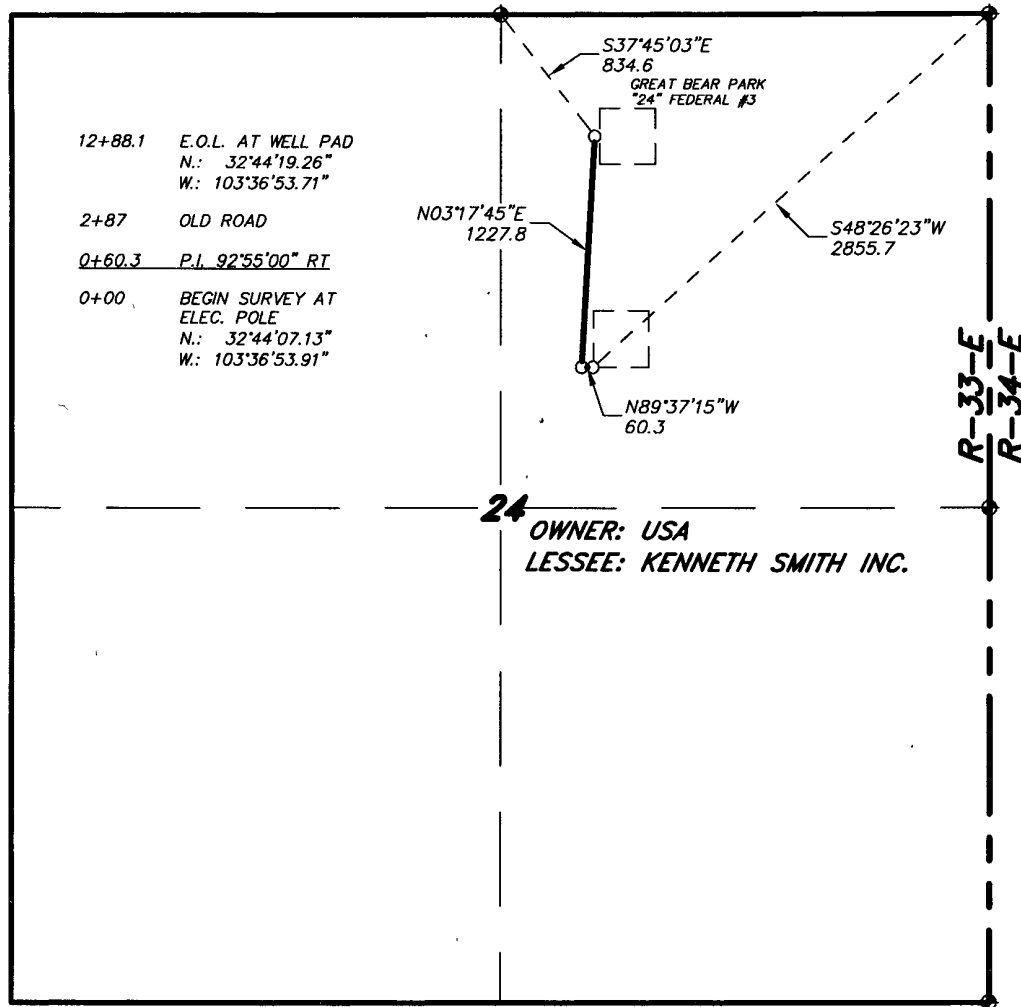
Directions to Location:  
FROM THE MILE MARKER 17 OF HWY 529; GO  
NORTHWEST 0.1 MILES TO LEASE ROAD, ON LEASE  
ROAD GO SOUTHWESTERLY THENCE SOUTH FOR 0.5  
MILES TO LEASE ROAD, ON LEASE ROAD GO  
SOUTHWESTERLY FOR 0.6 MILES TO LEASE ROAD, ON  
LEASE ROAD GO SOUTH FOR 0.3 MILES TO  
PROPOSED LEASE ROAD.

<b>DEVON ENERGY PRODUCTION COMPANY, L.P.</b>	
REF: GREAT BEAR PARK "24" FED	#3 / WELL PAD TOPO
THE GREAT BEAR PARK "24" FED #3 LOCATED 660'	
FROM THE NORTH LINE AND 1980' FROM THE EAST LINE OF	
SECTION 24, TOWNSHIP 18 SOUTH, RANGE 33 EAST,	
N.M.P.M., LEA COUNTY, NEW MEXICO.	

**BASIN SURVEYS** P.O. BOX 1786 - HOBBS, NEW MEXICO

W.O. Number: 21681	Drawn By: J. SMALL
Date: 09-10-2009	Disk: JMS 21681
Survey Date: 09-04-2009	Sheet 1 of 1 Sheets

SECTION 24, TOWNSHIP 18 SOUTH, RANGE 33 EAST, N.M.P.M.,  
LEA COUNTY, NEW MEXICO.

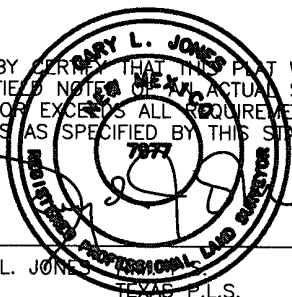


LEGAL DESCRIPTION

A STRIP OF LAND 30.0 FEET WIDE, LOCATED IN SECTION 24, TOWNSHIP 18 SOUTH, RANGE 33 EAST, N.M.P.M., LEA COUNTY, NEW MEXICO AND BEING 15.0 FEET LEFT AND RIGHT OF THE ABOVE PLATTED CENTERLINE SURVEY.

SECTION 24 = 1288.1 FEET = 78.07 RODS = 0.24 MILES = 0.89 ACRES

I HEREBY CERTIFY THAT THIS PLAT WAS PREPARED FROM FIELD NOTES OF AN ACTUAL SURVEY AND MEETS OR EXCEEDS ALL REQUIREMENTS FOR LAND SURVEYS AS SPECIFIED BY THIS STATE.



GARY L. JONES No. 7977  
TEXAS P.L.S. No. 5074

1000 0 1000 2000 FEET

**DEVON ENERGY PRODUCTION CO., L.P.**

REF: PROP ELECTRIC LINE TO THE GREAT BEAR PARK "24" FED #3

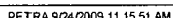
AN ELECTRIC LINE CROSSING USA LAND IN  
SECTION 24, TOWNSHIP 18 SOUTH, RANGE 33 EAST,  
N.M.P.M., LEA COUNTY, NEW MEXICO.

**BASIN SURVEYS** P.O. BOX 1786-HOBBS, NEW MEXICO

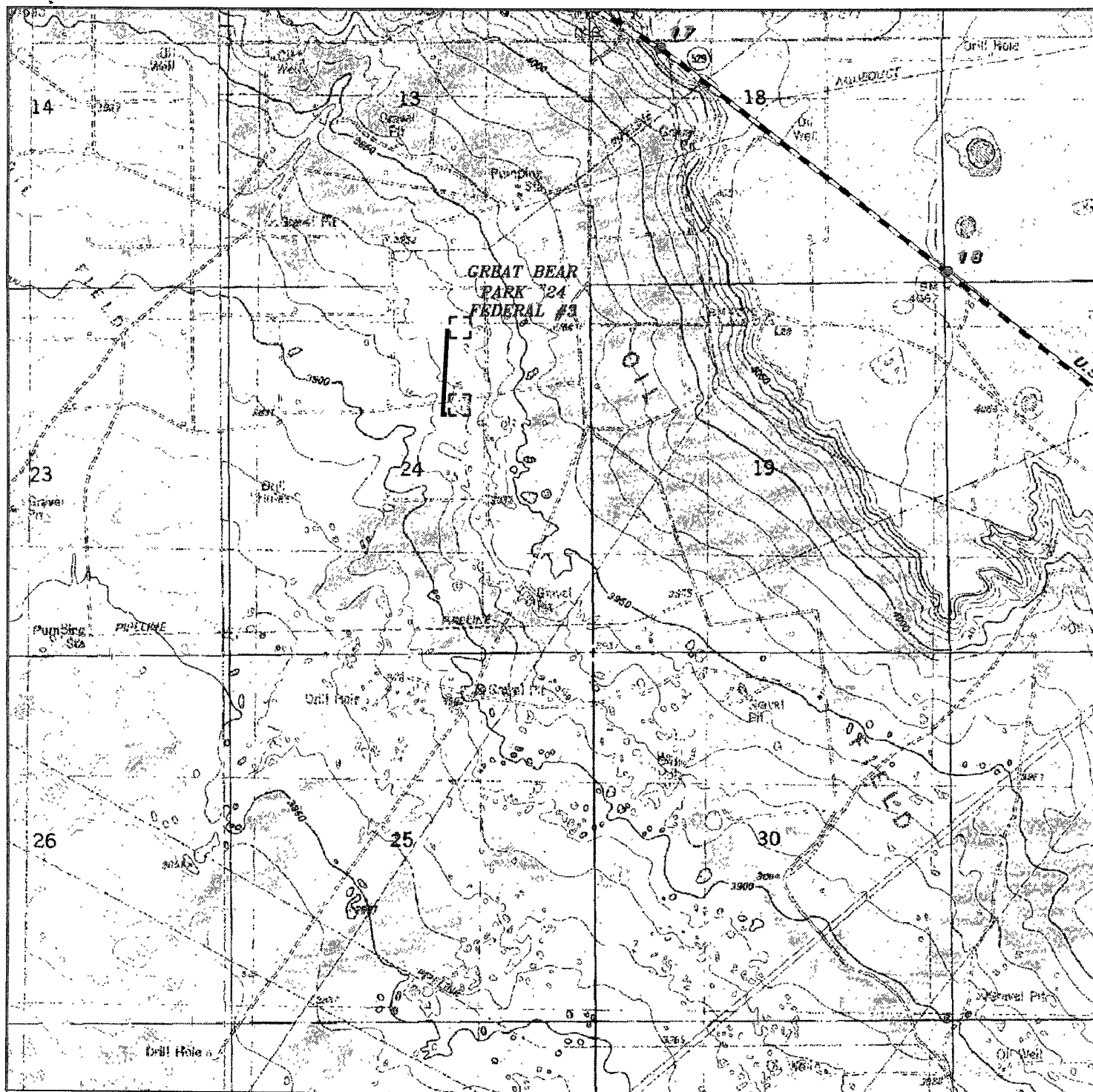
W.O. Number: 21920 Drawn By: J. M. SMALL

Date: 12-09-2009 Disk: JMS 21920

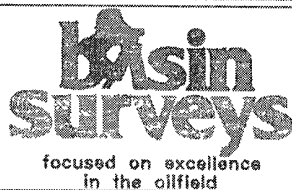
Survey Date: 11-03-2009 Sheet 1 of 1 Sheets







PROP ELECTRIC LINE TO THE GREAT BEAR PARK "24" FED #3  
Section 24, Township 18 South, Range 33 East,  
N.M.P.M., Lea County, New Mexico.



P.O. Box 1786  
1120 N. West County Rd.  
Hobbs, New Mexico 88241  
(575) 393-7316 - Office  
(575) 392-2206 - Fax  
basinsurveys.com

W.O. Number: JMS 21920

Survey Date: 11-03-2009

Scale: 1" = 2000'

Date: 12-09-2009

DEVON ENERGY  
PRODUCTION  
CO. L.P.



## DRILLING PROGRAM

Devon Energy Production Company, LP

### **Great Bear Park 24 Fed 3**

Surface Location: 660' FNL & 1980' FEL, Unit B, Sec 24 T18S R33E, Lea, NM

Bottom Hole Location: 660' FNL & 1980' FEL, Unit B, Sec 24 T18S R33E, Lea, NM

#### **1. Geologic Name of Surface Formation**

- a. Quaternary Alluvium

#### **2. Estimated Tops of Geological Markers & Depths of Anticipated Fresh Water, Oil or Gas:**

a. Rustler	1633'	Fresh Water
b. Salado Salt	1851'	
c. Tansil Dol.	2987'	Oil
d. Yates Ss	3091'	Oil
e. Seven Rivers	3603'	Oil
f. Queen Ss	4323'	Oil
g. Grayburg	4379'	Oil
h. Cherry Canyon	5156'	Oil

No other formations are expected to yield oil, gas or fresh water in measurable volumes. The surface fresh water sands will be protected by setting <sup>11 3/4"</sup> casing at <sup>1700'</sup> 3100' and circulating cement back to surface. The Delaware intervals will be isolated by setting 5 1/2" casing to total depth and circulating cement to 2600'.

#### **3. Casing Program:**

See COA

<u>Hole</u> <u>Size</u>	<u>Hole</u> <u>Interval</u>	<u>OD</u> <u>Csg</u>	<u>Casing</u> <u>Interval</u>	<u>Weight</u>	<u>Collar</u>	<u>Grade</u>
14 3/4"	0' - 450'	11 3/4"	0' - 450'	42#	ST&C	H-40
11"	450' - 3100'	8 5/8"	0' - 3100'	24# & 32#	LT&C	J-55
7 7/8"	3100' - 6,000'	5 1/2"	0' - 6,000'	17#	LT&C	J-55

#### **Design Parameter Factors:**

<u>Casing Size</u>	<u>Collapse Design</u> <u>Factor</u>	<u>Burst Design</u> <u>Factor</u>	<u>Tension Design</u> <u>Factor</u>
11 3/4"	5.35	9.81	15.35
8 5/8"	1.71	2.65	4.17
5 1/2"	1.74	1.89	2.00

4. **Cement Program:**

See COA

a. 11 3/4" Surface

Lead with 110 sx (35:65) Poz Class C + 5% NaCl + 1/4 lbs/sx Celloflake, and 4% Bentonite + 1% Sodium Metasilicate + 5% MPA-5; 12.8 ppg, 1.97 cf/sx, 10.56 gps. Tail with 150 sx Class C + 2% CaCl<sub>2</sub> + 1/4 lbs/sx Celloflake; 14.8 ppg, 1.35 cf/sx, 6.35 gps. TOC = 0.

b. 8 5/8" Intermediate

Lead with 695 sx (35:65) Poz Class C + 5% NaCl + 1/4 lbs/sx Cello Flake + 6% Bentonite + 5% NaCl; 12.5 ppg, 1.97 cf/sx, 11.24 gps. Tail with 300 sx Class C + 1/4 lbs/sx Cello Flake + 5% NaCl + 0.4% Sodium Metasilicate + 4% MPA-5; 14.8 ppg, 1.35 cf/sx, 6.35 gps. TOC = 0.

c. 5 1/2" Production

Lead with 225 sx (35:65) Poz Class C + 1/4 #/sx Cello Flake + 6% Bentonite + 0.4% FL-52A; 13.30 ppg, 1.94 cf/sx, 7.55 gps. Tail with 585 sx (60:40) Poz Class C + 1% NaCl; 13.8 ppg, 1.35 cf/sx, 6.29 gps. TOC = 2,600.

The above cement volumes could be revised pending the caliper measurement from the open hole logs. All casing is new and API approved.

5. **Pressure Control Equipment:**

See COA

The blowout prevention system will consist of a bag type (hydril) preventer, a double ram preventer stack, and a rotating head. Both the hydril and ram stack will be hydraulically operated. Both BOP systems will be rated at 5000 psi. Prior to drilling out the the 8 5/8" intermediate shoe the ram stack will be nipped up with 4.5" pipe rams installed. ~~The hydril will be tested to 1000 psi (high) and 250 psi (low).~~ Tests on the 5000 psi BOP will be conducted per the BLM Drilling Operations Order #2.

The ram system will be operated and checked each 24-hour period and each time the drill pipe is out of the hole. These tests will be logged in the daily driller's log. A 2" kill line and 3" choke line will be incorporated into the drilling spool below the ram BOP. In addition to the rams and hydril, other BOP accessories include a kelly cock, floor safety valve, choke lines and choke manifold rated at 5000 psi WP.

6. **Proposed Mud Circulation System**

See COA

<u>Depth</u>	<u>Mud Wt.</u>	<u>Visc</u>	<u>Fluid Loss</u>	<u>Type System</u>
0' - 1700'	8.4 - 9.0	32-34	NC	Fresh Water
1700' - 3100'	8.8 - 9.2	28-30	NC	<del>Fresh Water</del> / Brine
3100' - 6,000'	8.6 - 9.0	28	NC-12 cc	Fresh Water / Brine

The necessary mud products for weight addition and fluid loss control will be on location at all times.

**7. Auxiliary Well Control and Monitoring Equipment:**

- a. A Kelly cock will be in the drill string at all times.
- b. A full opening drill pipe stabbing valve having the appropriate connections will be on the rig floor at all times.
- c. Hydrogen Sulfide detection equipment will be in operation after drilling out the 8 5/8" casing shoe until the 5 1/2" casing is cemented. Breathing equipment will be on location upon drilling the 8 5/8" shoe until total depth is reached.

**8. Logging, Coring, and Testing Program:** See COA

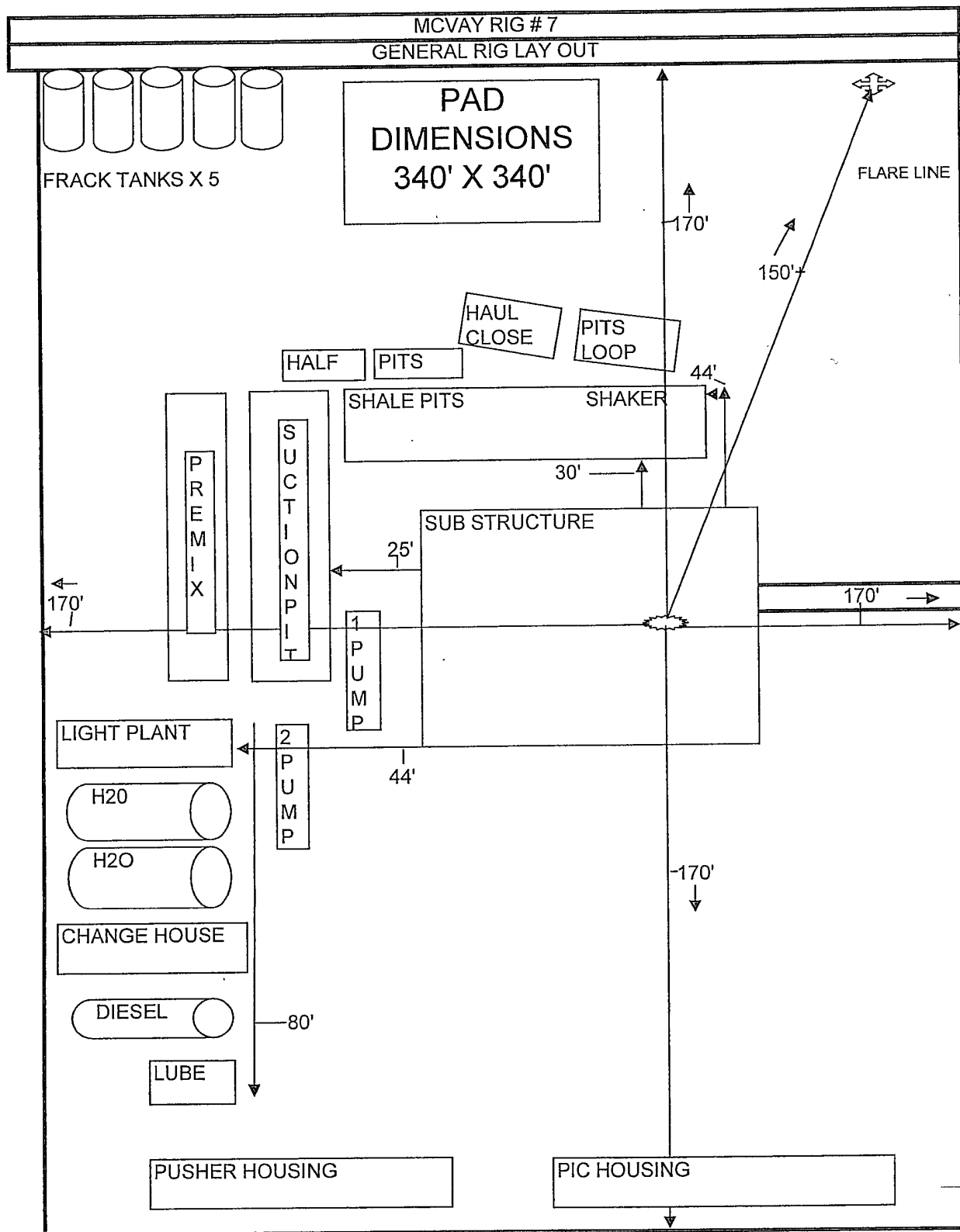
- a. Drill stem tests will be based on geological sample shows.
- b. If a drill stem test is anticipated; a procedure, equipment to be used and safety measures will be provided via sundry notice to the BLM.
- c. The open hole electrical logging program will be:
  - i. Total Depth to Intermediate Casing      Dual Laterolog-Micro Laterolog with SP and Gamma Ray.      Compensated Neutron – Z Density log with Gamma Ray and Caliper.
  - ii. Total Depth to Surface      Compensated Neutron with Gamma Ray
  - iii. No coring program is planned
  - iv. Additional testing will be initiated subsequent to setting the 5 1/2" production casing. Specific intervals will be targeted based on log evaluation, geological sample shows and drill stem tests.

**9. Potential Hazards:**

- a. No abnormal pressures or temperatures are expected. A H2S contingency plan will be provided. All personnel will be familiar with all aspects of safe operation of equipment being used to drill this well. Estimated BHP 2640 psi and Estimated BHT 130°.

**10. Anticipated Starting Date and Duration of Operations:**

- a. Road and location construction will begin after the BLM has approved the APD. Anticipated spud date will be as soon after BLM approval and as soon as a rig will be available. Move in operations and drilling is expected to take 30 days. If production casing is run then an additional 30 days will be needed to complete well and construct surface facilities and/or lay flow lines in order to place well on production.



150'

Haul off access

RIG 80

Closed Loop System

30'

30'

90'

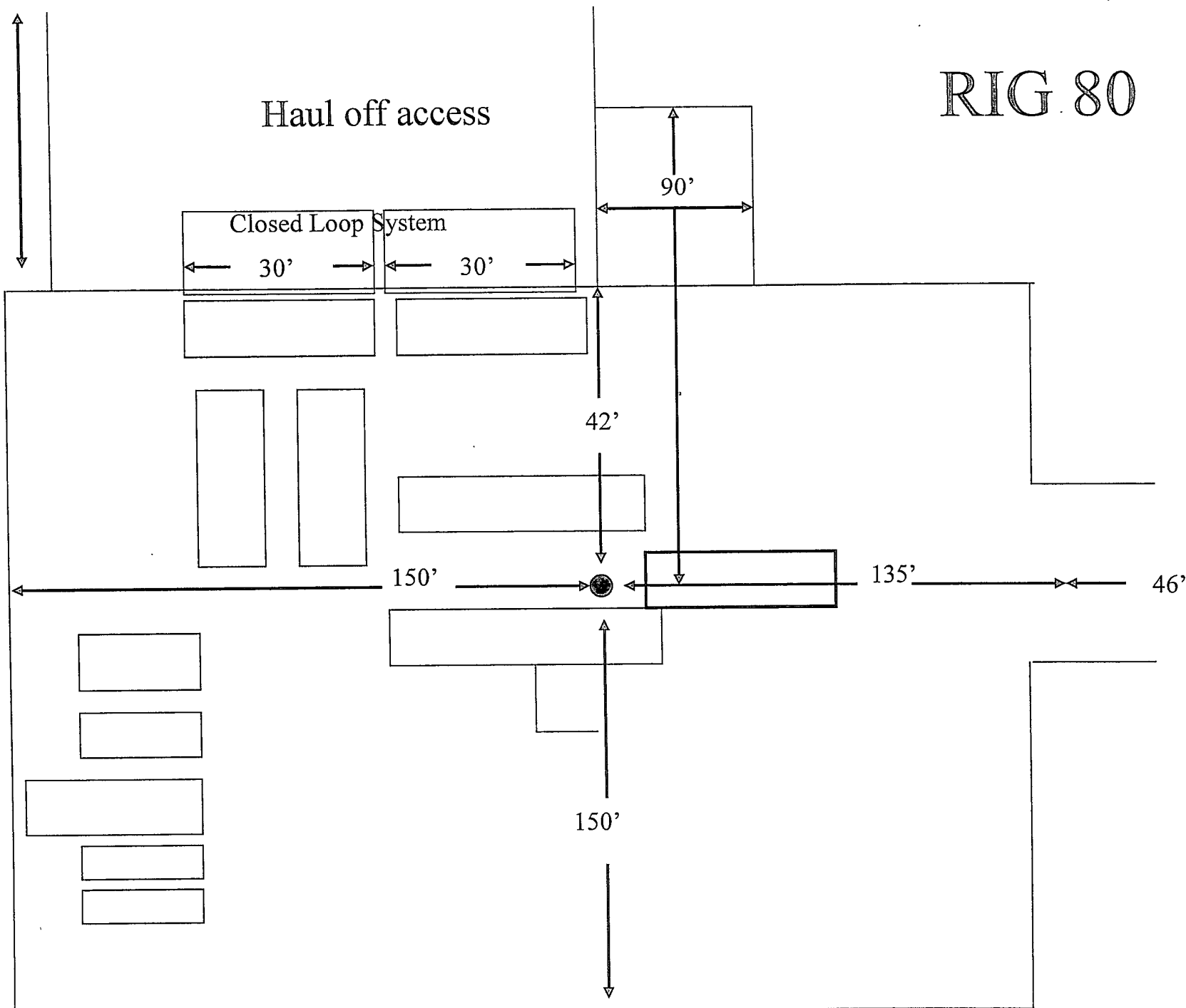
42'

150'

135'

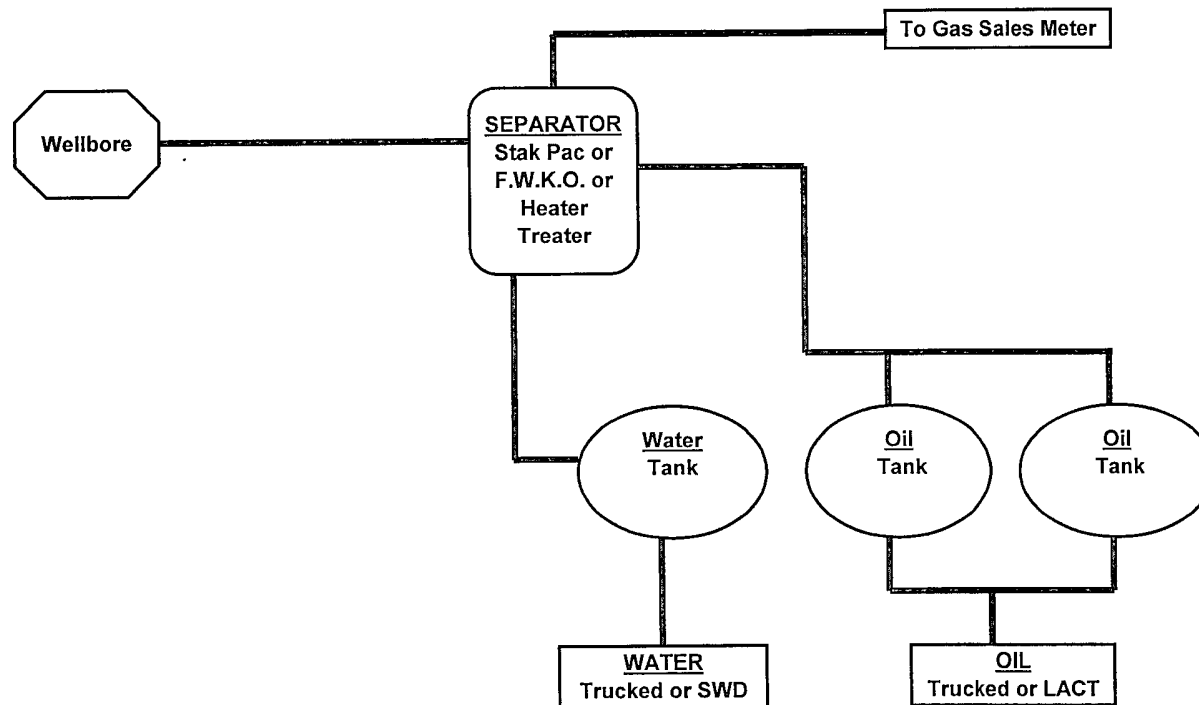
46'

150'

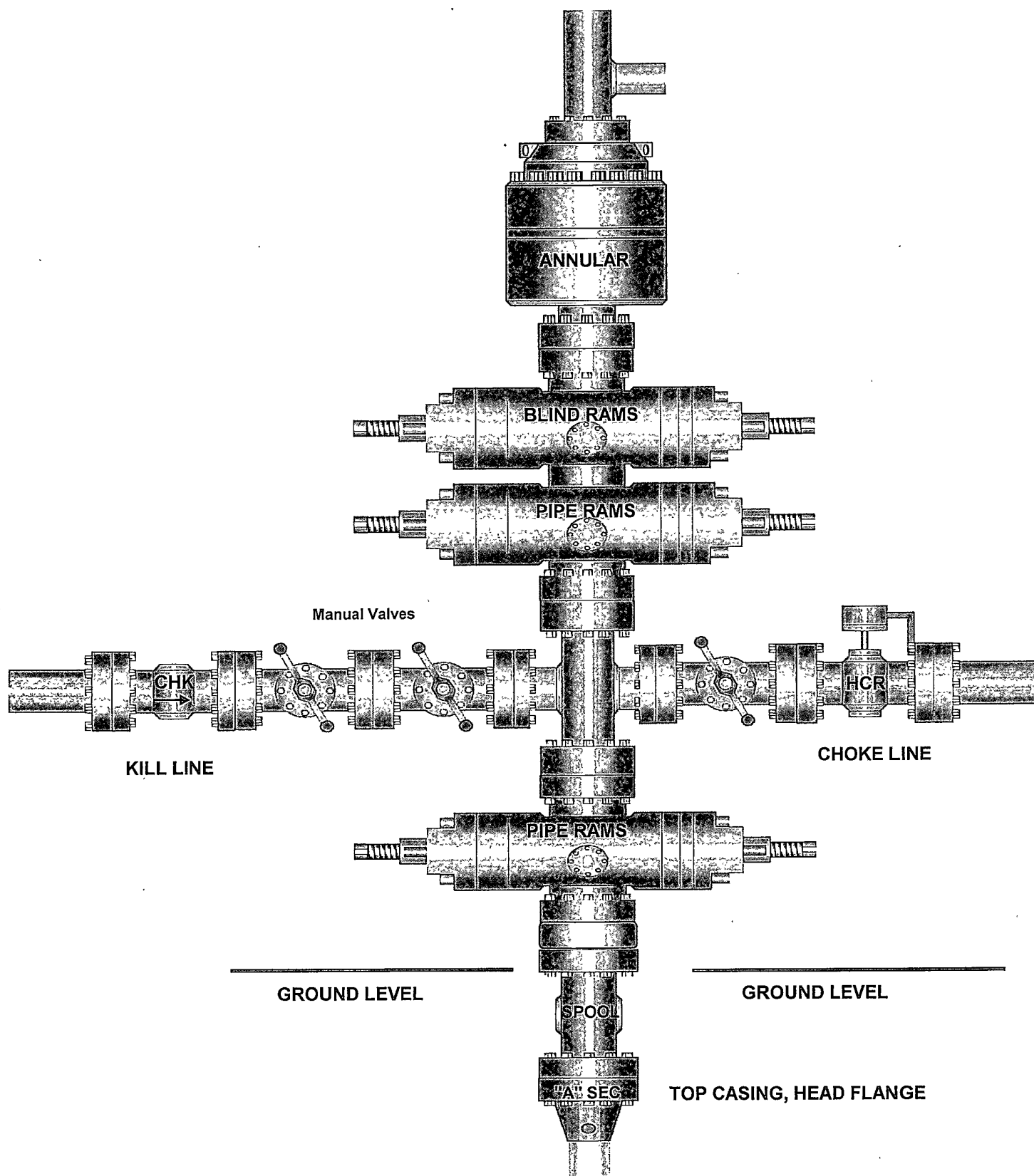


DEVON ENERGY PRODUCTION COMPANY LP

General Production Facilities Diagram



# 13-5/8" x 5,000 psi BOP Stack





# 5,000 PSI CHOKE MANIFOLD

