

Submit to Appropriate

## State of New Mexico

Form C-105

District Office

State Lease

- 6 copies

State Lease - 6 copies

Fee Lease - 5 copies

DISTRICT I

P.O. Box 1980, Hobbs, NM 88240

DISTRICT II

P.O. Drawer DD, Artesia, NM 88210

DISTRICT III

1000 Rio Brazos Rd., Aztec, NM 87410

Energy, Minerals and Natural Resources Department

Revised 1-1-89

**RECEIVED**  
**APR 05 2010**  
**HOBBS**

## OIL CONSERVATION DIVISION

1220 South St. Francis Drive

Santa Fe, New Mexico 87504

WELL API NO.

30-025-03151 ✓

5. Indicate Type of Lease

State ☒Fee ☐

6. State Oil &amp; Gas Lease No

7. Lease Name or Unit Agreement Name

South Vacuum Unit 35 ✓

8. Well No

2 SWD 352 ✓

9. Pool Name or Wildcat

SWD; Vacuum; Devonian, South

## WELL COMPLETION OR RECOMPLETION REPORT AND LOG

1a. Type of Well:

OIL WELL ☐GAS WELL ☐DRY ☐OTHER ☒

SWD

b. Type of Completion:

NEW WELL ☐WORK OVER ☐DEEPEN ☐PLUG BACK ☐DIFF RESVR ☒OTHER ☐

Covert to

SWD

2. Name of Operator

Paladin Energy Corp.

3. Address of Operator

10290 Monroe Dr., Suit 301, Dallas, Texas 75229

4. Well Location

Unit Letter

I

1980

Feet From The

South

Line and

660

Feet From the

East

Line

Section

35

Township

18S

Range

35E

NMPM

Lea,

County

10. Date Spudded

3/21/1958

11. Date T.D. Reached

9/4/1958

12. Date Compl (Ready to Prod)

2/25/2010

13. Elevation (DP&amp;RRB, RT, GR, ect)

3862' GR

14. Elev. Casinghead

15. Total Depth

13,919'

16. Plug Back T.D

11,955'

17. If Multiple Compl How

18. Intervals

Rotary Tools

Cable Tools

X

19. Producing Interval(s) of this completion - Top, Bottom, Name

Injection Interval - Devonian Formation from 11,630-800'

20. Was Directional Survey Made

No

21. Type Electric and Other Log

see original logs

22. Was Well Cored

No

## 23. CASING RECORD (Report all strings set in well)

CASING SIZE	WEIGHT LB/FT.	DEPTH SET	HOLE SIZE	CEMENTING RECORD	AMOUNT PULLED
13-3/8	48#	351'	17-1/2"	400 sacks	
9-5/8"	40#	3808'	12-1/4"	1220 sacks	
7	26 & 29 #	11,953'	8-3/4"	870 sacks	

## 24. LINER RECORD

SIZE	TOP	BOTTOM	SACKS CEMENT	SCREEN	SIZE	DEPTH SET	PACKER SET
5"	11,854'	13,881'	330		2-3/8"		11,580'
5"	11,620'	11,854'					

26. Perforation record (interval, size, and number)

11,630 - 11,800'

27. ACID, SHOT, FRACTURE, CEMENT, SQUEEZE, ETC.

DEPTH INTERVAL

AMOUNT AND KIND MATERIAL USED

6,000 gal. 15% NEFE Acid

## 28. PRODUCTION

Date of First Production	Production Method (Flowing, gas lift, pumping - size and typ pump)				Well Status (Prod. Or Shut-in)		
2/25/2010	SWD - Injection				Active		
Date of Test	Hours Tested	Choke Size	Prod'n for	Oil - Bbl.	Gas - MCF	Water - Bbl.	Gas - Oil Ratio
Flow Tubing Press.	Casing Pressure	Calculated 24-	Oil - Bbl	Gas - MCF	Water - Bbl.	Oil garvity - API (Corr.)	

29. Disposition of Gas (Sold, used for fuel, vented, etc)

Salt Water Disposal Well

Test Witnessed By

Mickey Horn

30. List Attachments

31. I hereby certify that the information shown on both sides of this form is true and complete to the best of my knowledge and belief

Signature *David Plaisance*

Printed

Name David Plaisance

Title VP Exploration &amp; Prod.

Date 4/1/2010

SWD-1188

Ven. Well POD # 2809601

## INSTRUCTIONS

This form is to be filed with the appropriate District Office of the Division not later than 20 days after the completion of any newly-drilled or deepened well. It shall be accompanied by one copy of all electrical and radio-activity logs run on the well and a summary of all special tests conducted, including drill stem tests. All depths reported shall be measured depths. In the case of directionally drilled wells, true vertical depths shall also be reported. For multiple completions, items 25 through 29 shall be reported for each zone. The form is to be filed in quintuplicate except on state land, where six copies are required. See Rule 1105.

**INDICATE FORMATION TOPS IN CONFORMANCE WITH GEOGRAPHICAL SECTION OF STATE**

## Southeastern New Mexico

T. Anhy	_____	T. Canyon	_____
T. Salt	_____	T. Strawn	_____
B. Salt	_____	T. Atoka	_____
T. Yates	_____	T. Miss	_____
T. 7 Rivers	_____	T. Devonian	_____
T. Queen	_____	T. Silurian	_____
T. Grayburg	_____	T. Montoya	_____
T. San Andres	_____	T. Simpson	_____
T. Glorieta	_____	T. McKee	_____
T. Paddock	_____	T. Ellenburger	_____
T. Blinebry	_____	T. Gr. Wash	_____
T. Tubb	_____	T. Delaware Sand	_____
T. Dinkard	_____	T. Bone Springs	_____
T. Abo	_____	T.	_____
T. Wolfcamp	_____	T.	_____
T. Penn	_____	T.	_____
T. Cisco (Bough C)	_____	T.	_____

## Northeastern New Mexico

T. Ojo Almo	T. Penn. "B"
T. Kirtland-Fruitland	T. Penn. "C"
T. Pictured Cliffs	T. Penn. "D"
T. Cliff House	T. Leadville
T. Menefee	T. Madison
T. Point Lookout	T. Elbert
T. Mancos	T. McCracken
T. Gallup	T. Ignacio Otzte
Base Greenhorn	T. Granite
T. Dakota	T.
T. Morrison	T.
T. Todilto	T.
T. Entrada	T.
T. Wingate	T.
T. Chinle	T.
T. Permian	T.
T. Penn "A"	T.

## OIL OR GAS SANDS OR ZONES

No. 1, from \_\_\_\_\_ To \_\_\_\_\_ No. 3, from \_\_\_\_\_ To \_\_\_\_\_  
No. 2, from \_\_\_\_\_ To \_\_\_\_\_ No. 4, from \_\_\_\_\_ To \_\_\_\_\_

## IMPORTANT WATER SANDS

**Include data on rate of water inflow and elevation to which water rose in hole.**

No. 1, from	To	feet
No. 2, from	To	feet
No. 3, from	To	feet

**LITHOLOGY RECORD (Attached additional sheet if necessary)**

From	To	Thickness Feet	Lithology	From	To	Thickness Feet	Lithology
			see original dated 10/21/58				

# WELLBORE SCHEMATIC

Lease: South Vacuum Unit 35

Well: 2 SWD

API # 30-025-03151

Field: South Vacuum

County: Lea

State New Mexico

Section 35

UL: I

Township 18-S

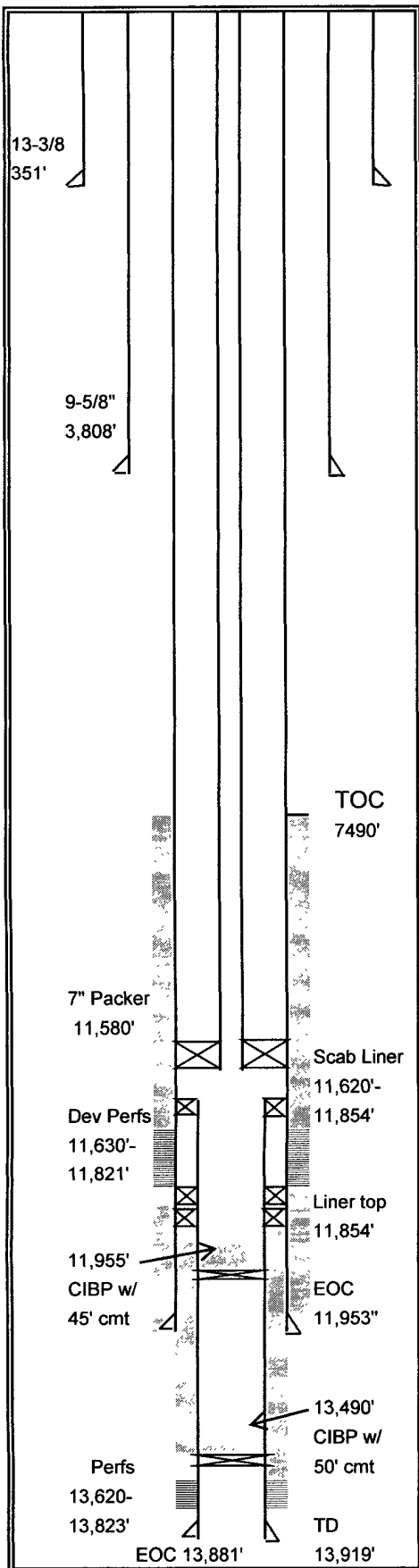
Range 35-E

Elev. GL 3862' GR

Elev. DF \_\_\_\_\_

Elev. KB \_\_\_\_\_

Spud Date: 3/21/1958 Completed 9/4/1958 Pool: Vacuum; Devonian, South



Surface Casing	13-3/8"	48#	Grade	
	Set @	351'	Hole Size	17 1/2"
	TOC	Sur.	Sacks	400

Intermediate Casing	9-5/8" OD	40#/Ft.	Grade	
	Set @	3808'	Hole Size	12-1/4"
	TOC	Sur	Sacks	1,220

Production Casing	7" OD	26 & 29#/Ft.	Grade	
	Set @	11,953'	Hole Size	8-3/4"
	TOC	7490'	Sacks	870

Liner Record -	5" OD	13#	Grade	
	Top @	11,891'	Bottom @	13,881'
	Screen		Hole Size	6"
	TOC	11,891'	Sacks	330

\*5" Scab Liner from 11,620- to 11,854'

## Tubing Det Tubing Detail

3-1/2" Plastic Lined tubing	
PKR. Set @ 11,580' ( 7" plastic coated)	

## Perforation Record

Devonian Foramtion - 11,630-800'	
McKee Sd. - 13,640-821' ( plugged off at 13,490')	

## Treatment record

6000 Gallons 15% NEFE Acid - Devonian injection perforations	
Comments: Well plugged back from McKee producer to Devonian SWD well	
dates: 2/9/2010 to 2/25/2010	
CIBP @ 13,540' with 50' of cement (TOC @ 13,490')	
CIBP @ 12,000' with 45' of cement (TOC @ 11,955')	

Present Completion

Date: 4/1/2010