

RECEIVED

DISTRICT I
1625 N. FRENCH DR., HOBBS, NM 88240

State of New Mexico
Energy, Minerals and Natural Resources Department

Form C-102

Revised October 12, 2005

Submit to Appropriate District Office

State Lease - 4 Copies

Fee Lease - 3 Copies

DISTRICT II
1301 W. GRAND AVENUE, ARTESIA, NM 88210

HOBBSON

CONSERVATION DIVISION

11885 SOUTH ST. FRANCIS DR.
Santa Fe, New Mexico 87505

DISTRICT III
1000 RIO BRAZOS RD., AZTEC, NM 87410

DISTRICT IV
11885 S. ST. FRANCIS DR., SANTA FE, NM 87505

WELL LOCATION AND ACREAGE DEDICATION PLAT

☐ AMENDED REPORT

API Number 30-025-39636 ✓	Pool Code 33230 ✓	Pool Name House; Blinebry ✓
Property Code 303107 ✓	Property Name ARNOLD A ✓	Well Number 3 ✓
OGRID No. 873 ✓	Operator Name APACHE CORPORATION ✓	Elevation 3588'

Surface Location

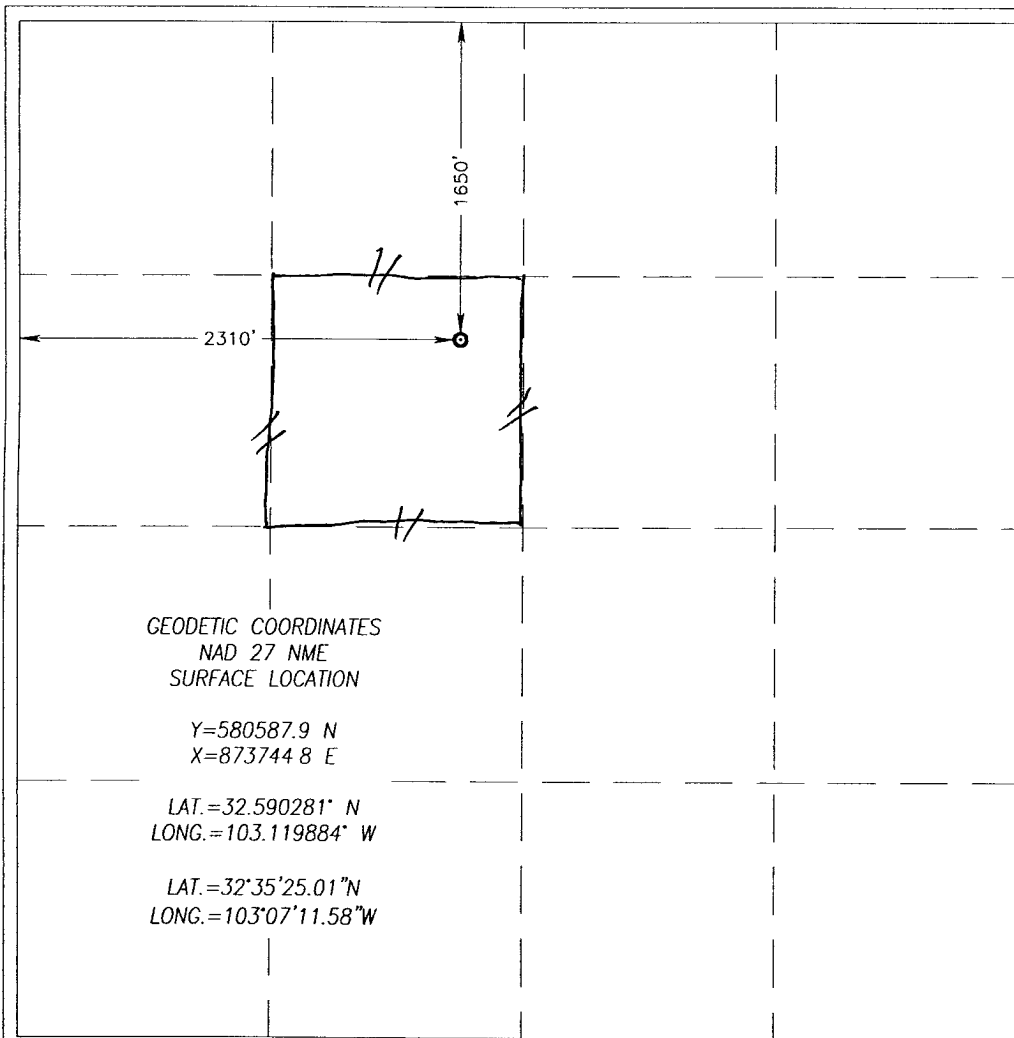
UL or lot No. F	Section 11	Township 20-S	Range 38-E	Lot Idn	Feet from the 1650	North/South line NORTH	Feet from the 2310	East/West line WEST	County LEA ✓
--------------------	---------------	------------------	---------------	---------	-----------------------	---------------------------	-----------------------	------------------------	-----------------

Bottom Hole Location If Different From Surface

UL or lot No.	Section	Township	Range	Lot Idn	Feet from the	North/South line	Feet from the	East/West line	County
---------------	---------	----------	-------	---------	---------------	------------------	---------------	----------------	--------

Dedicated Acres 40	Joint or Infill	Consolidation Code	Order No.
-----------------------	-----------------	--------------------	-----------

NO ALLOWABLE WILL BE ASSIGNED TO THIS COMPLETION UNTIL ALL INTERESTS HAVE BEEN CONSOLIDATED
OR A NON-STANDARD UNIT HAS BEEN APPROVED BY THE DIVISION



OPERATOR CERTIFICATION

I hereby certify that the information herein is true and complete to the best of my knowledge and belief, and that this organization either owns a working interest or unleased mineral interest in the land including the proposed bottom hole location or has a right to drill this well at this location pursuant to a contract with an owner of such mineral or working interest, or to a voluntary pooling agreement or a compulsory pooling order heretofore entered by the division.

Amber Cooke 3/30/10
Signature Date

Amber Cooke
Printed Name

SURVEYOR CERTIFICATION

I hereby certify that the well location shown on this plat was plotted from field notes of actual surveys made by me or under my supervision, and that the same is true and correct to the best of my belief.

RONALD J. EIDSON
JANUARY 6 2010
Date Surveyed
Signature & Seal of Professional Surveyor
DSS
Ronald J. Eidson 01/13/10

Certificate No. GARY G. EIDSON 12841
RONALD J. EIDSON 3239

RECEIVED

MAR 31 2010

DISTRICT I

1625 N. FRENCH DR., HOBBS, NM 88240

DISTRICT II

1301 W. GRAND AVENUE, ARTESIA, NM 88210

DISTRICT III

1000 RIO BRAZOS RD., AZTEC, NM 87410

DISTRICT IV

11885 S. ST. FRANCIS DR., SANTA FE, NM 87505

State of New Mexico
Energy, Minerals and Natural Resources Department

OIL CONSERVATION DIVISION

11885 SOUTH ST. FRANCIS DR.
Santa Fe, New Mexico 87505

Form C-102

Revised October 12, 2005

Submit to Appropriate District Office

State Lease - 4 Copies

Fee Lease - 3 Copies

WELL LOCATION AND ACREAGE DEDICATION PLAT

☐ AMENDED REPORT

API Number 30-025-39636 ✓	Pool Code 78760 ✓	Pool Name House; Tubb ✓
Property Code 303107 ✓	Property Name ARNOLD A ✓	Well Number 3 ✓
OGRID No. 873 ✓	Operator Name APACHE CORPORATION ✓	Elevation 3588'

Surface Location

UL or lot No. F	Section 11	Township 20-S	Range 38-E	Lot Idn	Feet from the 1650	North/South line NORTH	Feet from the 2310	East/West line WEST	County LEA ✓
--------------------	---------------	------------------	---------------	---------	-----------------------	---------------------------	-----------------------	------------------------	-----------------

Bottom Hole Location If Different From Surface

UL or lot No.	Section	Township	Range	Lot Idn	Feet from the	North/South line	Feet from the	East/West line	County
Dedicated Acres 40	Joint or Infill	Consolidation Code	Order No.						

NO ALLOWABLE WILL BE ASSIGNED TO THIS COMPLETION UNTIL ALL INTERESTS HAVE BEEN CONSOLIDATED
OR A NON-STANDARD UNIT HAS BEEN APPROVED BY THE DIVISION

	<p>OPERATOR CERTIFICATION</p> <p>I hereby certify that the information herein is true and complete to the best of my knowledge and belief, and that this organization either owns a working interest or unleased mineral interest in the land including the proposed bottom hole location or has a right to drill this well at this location pursuant to a contract with an owner of such mineral or working interest, or to a voluntary pooling agreement or a compulsory pooling order heretofore entered by the division.</p> <p><i>Amber Cooke</i> 3/30/10 Signature Date</p> <p>Amber Cooke Printed Name</p>
<p>GEODETIC COORDINATES NAD 27 NME SURFACE LOCATION</p> <p>Y=580587.9 N X=873744.8 E</p> <p>LAT.=32.590281° N LONG.=103.119884° W</p> <p>LAT.=32°35'25.01"N LONG.=103°07'11.58"W</p>	<p>SURVEYOR CERTIFICATION</p> <p>I hereby certify that the well location shown on this plat was plotted from field notes of actual surveys made by me or under my supervision, and that the same is true and correct to the best of my belief.</p> <p>RONALD J. EIDSON JANUARY 6 2010 Date Surveyed</p> <p>Signature & Seal of Professional Surveyor</p> <p><i>Ronald J. Eidson</i> 01/13/10 DSS</p> <p>Certificate No. GARY G. EIDSON 12841 RONALD J. EIDSON 3239</p>

RECEIVED

MAR 31 2010

HOBBSOCD

DISTRICT I
1625 N. FRENCH DR., HOBBS, NM 88240

State of New Mexico
Energy, Minerals and Natural Resources Department

Form C-102

Revised October 12, 2005
Submit to Appropriate District Office
State Lease - 4 Copies
Fee Lease - 3 Copies

DISTRICT II
1301 W. GRAND AVENUE, ARTESIA, NM 88210

OIL CONSERVATION DIVISION

11885 SOUTH ST. FRANCIS DR.
Santa Fe, New Mexico 87505

DISTRICT III
1000 RIO BRAZOS RD., AZTEC, NM 87410

DISTRICT IV
11885 S. ST. FRANCIS DR., SANTA FE, NM 87505

WELL LOCATION AND ACREAGE DEDICATION PLAT

☐ AMENDED REPORT

API Number 30-025-39636	Pool Code 33250	Pool Name House; Drinkard
Property Code 303107	Property Name ARNOLD A	Well Number 3
OGRID No. 873	Operator Name APACHE CORPORATION	Elevation 3588'

Surface Location

UL or lot No. F	Section 11	Township 20-S	Range 38-E	Lot Idn	Feet from the 1650	North/South line NORTH	Feet from the 2310	East/West line WEST	County LEA
--------------------	---------------	------------------	---------------	---------	-----------------------	---------------------------	-----------------------	------------------------	---------------

Bottom Hole Location If Different From Surface

UL or lot No.	Section	Township	Range	Lot Idn	Feet from the	North/South line	Feet from the	East/West line	County
Dedicated Acres 40	Joint or Infill	Consolidation Code	Order No.						

NO ALLOWABLE WILL BE ASSIGNED TO THIS COMPLETION UNTIL ALL INTERESTS HAVE BEEN CONSOLIDATED
OR A NON-STANDARD UNIT HAS BEEN APPROVED BY THE DIVISION

<p>GEODETIC COORDINATES NAD 27 NME SURFACE LOCATION Y=580587.9 N X=873744.8 E LAT.=32.590281° N LONG.=103.119884° W LAT.=32°35'25.01"N LONG.=103°07'11.58"W</p>	<p>OPERATOR CERTIFICATION</p> <p>I hereby certify that the information herein is true and complete to the best of my knowledge and belief, and that this organization either owns a working interest or unleased mineral interest in the land including the proposed bottom hole location or has a right to drill this well at this location pursuant to a contract with an owner of such mineral or working interest, or to a voluntary pooling agreement or a compulsory pooling order heretofore entered by the division.</p> <p><i>Amber Cooke</i> 3/30/10 Signature Date Amber Cooke Printed Name</p> <p>SURVEYOR CERTIFICATION</p> <p>I hereby certify that the well location shown on this plat was plotted from field notes of actual surveys made by me or under my supervision, and that the same is true and correct to the best of my belief.</p> <p>RONALD J. EIDSON JANUARY 16, 2010 Date Surveyed Signature & Seal of Professional Surveyor DSS Certificate No. GARY G. EIDSON 12641 RONALD J. EIDSON 3239</p>
--	---