

UNITED STATES
DEPARTMENT OF THE INTERIOR
BUREAU OF LAND MANAGEMENT

FORM APPROVED
OMB No. 1004-0135
Expires July 31, 1996

RECEIVED

APR 05 2010

HOBBSSOCD

SUNDRY NOTICES AND REPORTS ON WELLS

Do not use this form for proposals to drill or to re-enter an abandoned well. Use form 3160-3 (APD) for such proposals.

SUBMIT IN TRIPLICATE - Other instructions on reverse side

1. Type of Well

☐ Oil Well ☒ Gas Well ☐ Other

2. Name of Operator

Cimarex Energy Co. of Colorado

3a. Address

600 N. Marienfeld St., Ste. 600; Midland, TX 79701

3b. Phone No. (include area code)

432-571-7800

4. Location of Well (Footage, Sec., T., R., M., or Survey Description)

1650 FNL & 1980 FEL
28-19S-33E

Unit B

5. Lease Serial No.

NM-27570

6. If Indian, Allottee or Tribe Name

7. If Unit or CA/Agreement, Name and/or No.

NM-103150

8. Well Name and No.

Topacio Federal 28 Com No. 1

9. API Well No.

30-025-34522

10. Field and Pool, or Exploratory Area

Gem; Morrow (G)

11. County or Parish, State

Lea County, NM

12. CHECK APPROPRIATE BOX(ES) TO INDICATE NATURE OF NOTICE, REPORT, OR OTHER DATA

TYPE OF SUBMISSION

☒ Notice of Intent

☐ Subsequent Report

☐ Final Abandonment Notice

TYPE OF ACTION

☐ Acidize

☐ Alter Casing

☐ Casing Repair

☐ Change Plans

☐ Convert to Injection

☐ Deepen

☐ Fracture Treat

☐ New Construction

☐ Plug and Abandon

☒ Plug Back

☐ Production (Start/Resume)

☐ Reclamation

☒ Recomplete

☐ Temporarily Abandon

☐ Water Disposal

☐ Water Shut-Off

☐ Well Integrity

☒ Other Plug back and

recomplete horizontally

in Brushy Canyon (Delaware)

13. Describe Proposed or Completed Operation (clearly state all pertinent details, including estimated starting date of any proposed work and approximate duration thereof.

If the proposal is to deepen directionally or recomplete horizontally, give subsurface locations and measured and true vertical depths of all pertinent markers and zones Attach the bond under which the work will be performed or provide the Bond No. on file with BLM/BIA. Required subsequent reports shall be filed within 30 days following completion of the involved operations. If the operation results in a multiple completion or recompletion in a new interval, a Form 3160-4 shall be filed once testing has been completed. Final Abandonment Notices shall be filed only after all requirements, including reclamation, have been completed, and the operator has determined that the site is ready for final inspection.)

Well is a marginal Morrow producer with perfs @ 13212-412.' Cimarex proposes to plug back and recomplete the well horizontally in the Delaware as outlined below. A vertical Delaware swab test will be attempted first (that sundry notice has been approved by BLM). The vertical Delaware perfs (7613-60') will be squeezed before the horizontal recompletion begins. In addition, Wolfcamp and Bone Spring partial plugs will be added per approved Delaware swab test sundry notice. If we can't establish a minimum 50' cement plug below the intermediate casing shoe with bradenhead squeeze, annulus pressures will be monitored monthly to satisfy Secretary's Potash stipulations.

- Set CIBP at 7455' w 2 sx sand (additional plugging requirements will be addressed at abandonment) . Mill window from 7433-7448.' Kick off 4 3/4" hole at 7443' and land curve at 7742' MD, 76340' TVD. Drill to TD at 10849' MD and 7650' TVD.
- Run 2 7/8" 6.5# L-80 EUE 8rd liner from RSB packer at 7333' to TD at 10849' MD. Liner will be PEAK completion assembly, which requires no cement.
- Install PEAK completion liner and frac as needed.

SEE ATTACHED FOR
CONDITIONS OF APPROVAL

Please see attached C-102, WBD, and preliminary directional survey.

14. I hereby certify that the foregoing is true and correct

Name (Printed/Typed)

Natalie Krueger

Signature

Title

Regulatory

Date

July 29, 2009

THIS SPACE FOR FEDERAL OR STATE OFFICE USE

Approved by

Title

Signature

Denied

I willfully make to any department or agency of the United States any false, fictitious or

Denied because of too many inactive wells for this company. See Rule 19.15.5.9(A)(4)

DENIED BY Oil Conservation Division
On 2/14/10 see attached letter
APD Reviewed by dm
For more information on this matter, please call
Donna Mull @ (575) 393-6161 ext 115 or
email donna.mull@state.nm.us

APPROVED

MAR 30 2010

Date

WESLEY W. INGRAM
PETROLEUM ENGINEER

DISTRICT I
P. O. Box 1980
Hobbs, NM 88241-1980

DISTRICT II
P. O. Drawer DD
Artesia, NM 88211-0719

DISTRICT III
1000 Rio Brazos Rd.
Aztec, NM 87410

DISTRICT IV
P. O. Box 2088
Santa Fe, NM 87507-2088

State of New Mexico
Energy, Minerals, and Natural Resources Department

OIL CONSERVATION DIVISION
P. O. Box 2088
Santa Fe, New Mexico 87504-2088

RECEIVED

APR 05 2010

HOBBSDO

Form C-102
Revised 02-10-94

Instructions on back

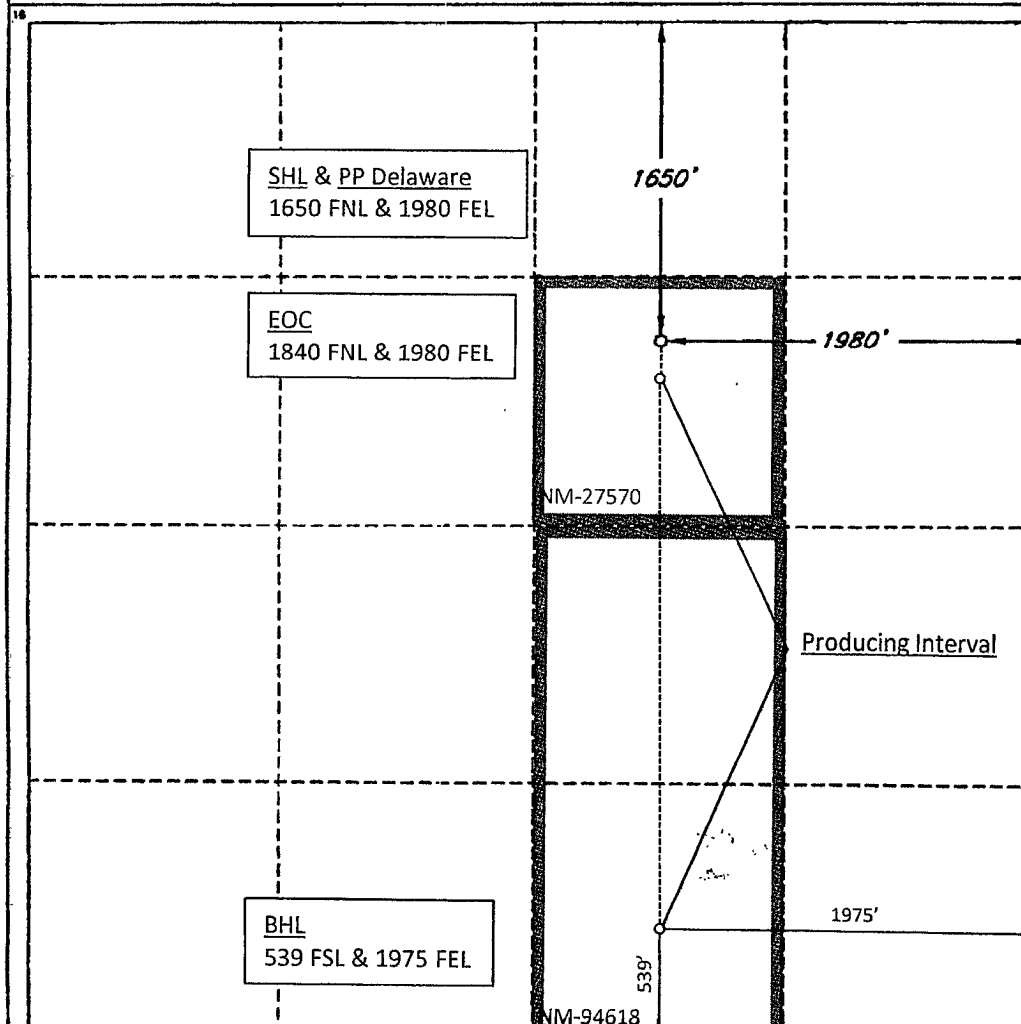
Submit to the Appropriate
District Office
State Lease - 4 copies
Fee Lease - 3 copies

☐ AMENDED REPORT

WELL LOCATION AND ACREAGE DEDICATION PLAT

1 API Number 025-34522 30-015-33431		2 Pool Code 27250 87354		3 Pool Name Gem Crazy Horse; Delaware					
4 Property Code 300562		5 Property Name TOPACIO FEDERAL '28' COM				6 Well Number 1			
7 OGRID No. 162683		8 Operator Name				9 Elevation 3598'			
10 SURFACE LOCATION									
UL or lot no. G	Section 28	Township 19 SOUTH	Range 33 EAST, N.M.P.M.	Lot Ida	Feet from the 1650'	North/South line NORTH	Feet from the 1980'	East/West line EAST	County LEA
11 BOTTOM HOLE LOCATION IF DIFFERENT FROM SURFACE									
UL or lot no. O	Section 28	Township 19 SOUTH	Range 33 East, N.M.P.M.	Lot Ida	Feet from the 539	North/South line SOUTH	Feet from the 1975	East/West line EAST	County LEA
12 Dedicated Acres 120		13 Joint or Infill		14 Consolidation Code C		15 Order No. NSL Pending			

NO ALLOWABLE WELL BE ASSIGNED TO THIS COMPLETION UNTIL ALL INTERESTS HAVE BEEN CONSOLIDATED OR A NON-STANDARD UNIT HAS BEEN APPROVED BY THE DIVISION



OPERATOR CERTIFICATION

I hereby certify that the information contained herein is true and complete to the best of my knowledge and belief.

Signature
Zeno Farris
Printed Name
Mgr Operations Administration
Title
07-29-09
Date

SURVEYOR CERTIFICATION

I hereby certify that the well location shown on this plat was plotted from field notes of actual surveys made by me or under my supervision, and that the same is true and correct to the best of my belief.

Date of Survey
August 1, 2009
Signature and Seal of Professional Surveyor
12123
REGISTERED PROFESSIONAL SURVEYOR
Certificate No.
ROGER M. ROBBINS P.S. #12128



Cimarex Energy Co.

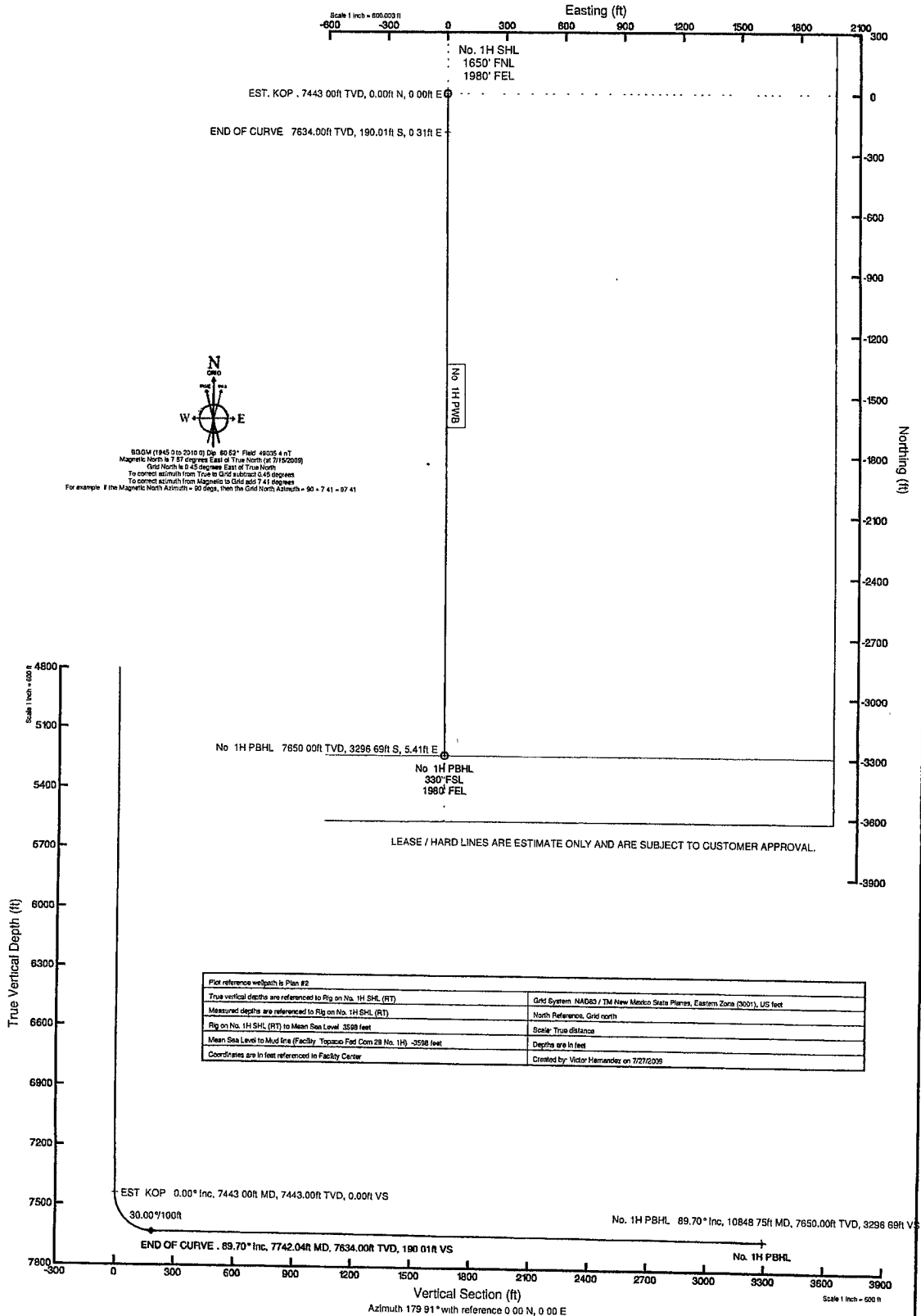
Location: Lea County, NM
Field: (Topacio) Sec 28, T19S, R33E
Facility: Topacio Fed Com 28 No. 1H

Slot: No. 1H SHL
Well: No. 1H
Wellbore: No. 1H PWB



Well Profile Data

Design Comment	MD (ft)	Inc (°)	Az (°)	TVD (ft)	Local N (ft)	Local E (ft)	DLS (%100ft)	VS (ft)
Tie On	0.00	0.000	179.906	0.00	0.00	0.00	0.00	0.00
EST. KOP	7443.00	0.000	179.906	7443.00	0.00	0.00	0.00	0.00
END OF CURVE	7742.04	89.705	179.906	7634.00	-190.01	0.31	30.00	190.01
No. 1H PBHL	10848.75	89.705	179.906	7650.00	-3296.69	5.41	0.00	3296.69





Planned Wellpath Report

Plan #2
Page 1 of 3



INTEQ

REFERENCE WELLPATH IDENTIFICATION

Operator	Cimarex Energy Co.	Slot	No. 1H SHL
Area	Lea County, NM	Well	No. 1H
Field	(Topacio) Sec 28, T19S, R33E	Wellbore	No. 1H PWB
Facility	Topacio Fed Com 28 No. 1H		

REPORT SETUP INFORMATION

Projection System	NAD83 / TM New Mexico State Planes, Eastern Zone (3001), US feet	Software System	WellArchitect® 2.0
North Reference	Grid	User	Victor Hernandez
Scale	0.999986	Report Generated	7/27/2009 at 3:36:44 PM
Convergence at slot	0.45° East	Database/Source file	WA_Midland/No. 1H_PWB.xml

WELLPATH LOCATION

	Local coordinates		Grid coordinates		Geographic coordinates	
	North[ft]	East[ft]	Easting[USft]	Northing[USft]	Latitude	Longitude
Slot Location	0.00	0.00	801210.36	544308.79	32°29'36.756"N	103°29'25.686"W
Facility Reference Pt			801210.36	544308.79	32°29'36.756"N	103°29'25.686"W
Field Reference Pt			801210.36	544308.79	32°29'36.757"N	103°29'25.686"W

WELLPATH DATUM

Calculation method	Minimum curvature	Rig on No. 1H SHL (RT) to Facility Vertical Datum	0.00ft
Horizontal Reference Pt	Facility Center	Rig on No. 1H SHL (RT) to Mean Sea Level	3598.00ft
Vertical Reference Pt	Rig on No. 1H SHL (RT)	Facility Vertical Datum to Mud Line (Facility)	0.00ft
MD Reference Pt	Rig on No. 1H SHL (RT)	Section Origin	N 0.00, E 0.00 ft
Field Vertical Reference	Mean Sea Level	Section Azimuth	179.91°



Planned Wellpath Report

Plan #2
Page 2 of 3



INTEQ

REFERENCE WELLPATH IDENTIFICATION

Operator	Cimarex Energy Co.	Slot	No. 1H SHL
Area	Lea County, NM	Well	No. 1H
Field	(Topacio) Sec 28, T19S, R33E	Wellbore	No. 1H PWB
Facility	Topacio Fed Com 28 No. 1H		

WELLPATH DATA (38 stations) † = interpolated/extrapolated station

MD [ft]	Inclination [°]	Azimuth [°]	TVD [ft]	Vert Sect [ft]	North [ft]	East [ft]	DLS [°/100ft]	Comments
0.00	0.000	179.906	0.00	0.00	0.00	0.00	0.00	Tie On
7443.00	0.000	179.906	7443.00	0.00	0.00	0.00	0.00	EST. KOP
7543.00†	29.998	179.906	7538.49	25.59	-25.59	0.04	30.00	
7643.00†	59.996	179.906	7608.40	95.49	-95.49	0.16	30.00	
7742.00†	89.705	179.906	7634.00	190.01	-190.01	0.31	30.00	END OF CURVE
7743.00†	89.705	179.906	7634.00	190.98	-190.98	0.31	0.00	
7843.00†	89.705	179.906	7634.52	290.98	-290.98	0.48	0.00	
7943.00†	89.705	179.906	7635.03	390.98	-390.98	0.64	0.00	
8043.00†	89.705	179.906	7635.55	490.97	-490.97	0.81	0.00	
8143.00†	89.705	179.906	7636.06	590.97	-590.97	0.97	0.00	
8243.00†	89.705	179.906	7636.58	690.97	-690.97	1.13	0.00	
8343.00†	89.705	179.906	7637.09	790.97	-790.97	1.30	0.00	
8443.00†	89.705	179.906	7637.61	890.97	-890.97	1.46	0.00	
8543.00†	89.705	179.906	7638.12	990.97	-990.97	1.63	0.00	
8643.00†	89.705	179.906	7638.64	1090.97	-1090.97	1.79	0.00	
8743.00†	89.705	179.906	7639.15	1190.97	-1190.96	1.95	0.00	
8843.00†	89.705	179.906	7639.67	1290.96	-1290.96	2.12	0.00	
8943.00†	89.705	179.906	7640.18	1390.96	-1390.96	2.28	0.00	
9043.00†	89.705	179.906	7640.70	1490.96	-1490.96	2.45	0.00	
9143.00†	89.705	179.906	7641.21	1590.96	-1590.96	2.61	0.00	
9243.00†	89.705	179.906	7641.73	1690.96	-1690.96	2.77	0.00	
9343.00†	89.705	179.906	7642.24	1790.96	-1790.96	2.94	0.00	
9443.00†	89.705	179.906	7642.76	1890.96	-1890.95	3.10	0.00	
9543.00†	89.705	179.906	7643.27	1990.95	-1990.95	3.27	0.00	
9643.00†	89.705	179.906	7643.79	2090.95	-2090.95	3.43	0.00	
9743.00†	89.705	179.906	7644.30	2190.95	-2190.95	3.59	0.00	
9843.00†	89.705	179.906	7644.82	2290.95	-2290.95	3.76	0.00	
9943.00†	89.705	179.906	7645.33	2390.95	-2390.95	3.92	0.00	
10043.00†	89.705	179.906	7645.85	2490.95	-2490.94	4.09	0.00	
10143.00†	89.705	179.906	7646.36	2590.95	-2590.94	4.25	0.00	



Planned Wellpath Report

Plan #2
Page 3 of 3



INTEQ

REFERENCE WELLPATH IDENTIFICATION			
Operator	Cimarex Energy Co.	Slot	No. 1H SHL
Area	Lea County, NM	Well	No. 1H
Field	(Topacio) Sec 28, T19S, R33E	Wellbore	No. 1H PWB
Facility	Topacio Fed Com 28 No. 1H		

WELLPATH DATA (38 stations) † = interpolated/extrapolated station								
MD [ft]	Inclination [°]	Azimuth [°]	TVD [ft]	Vert Sect [ft]	North [ft]	East [ft]	DLS [°/100ft]	Comments
10243.00†	89.705	179.906	7646.88	2690.95	-2690.94	4.41	0.00	
10343.00†	89.705	179.906	7647.39	2790.94	-2790.94	4.58	0.00	
10443.00†	89.705	179.906	7647.91	2890.94	-2890.94	4.74	0.00	
10543.00†	89.705	179.906	7648.42	2990.94	-2990.94	4.91	0.00	
10643.00†	89.705	179.906	7648.94	3090.94	-3090.94	5.07	0.00	
10743.00†	89.705	179.906	7649.46	3190.94	-3190.93	5.23	0.00	
10843.00†	89.705	179.906	7649.97	3290.94	-3290.93	5.40	0.00	
10848.75	89.705	179.906	7650.00	3296.69	-3296.69	5.41	0.00	No. 1H PBHL

HOLE & CASING SECTIONS Ref Wellbore: No. 1H PWB Ref Wellpath: Plan #2									
String/Diameter	Start MD [ft]	End MD [ft]	Interval [ft]	Start TVD [ft]	End TVD [ft]	Start N/S [ft]	Start E/W [ft]	End N/S [ft]	End E/W [ft]
4.75in Open Hole	7443.00	10848.75	3405.75	7443.00	7650.00	0.00	0.00	-3296.69	5.41

TARGETS									
Name	MD [ft]	TVD [ft]	North [ft]	East [ft]	Grid East [srv ft]	Grid North [srv ft]	Latitude	Longitude	Shape
1) No. 1H PBHL	10848.75	7650.00	-3296.69	5.41	801215.77	541012.15	32°29'04.137" N	103°29'25.927" W	point

SURVEY PROGRAM Ref Wellbore: No. 1H PWB Ref Wellpath: Plan #2				
Start MD [ft]	End MD [ft]	Positional Uncertainty Model	Log Name/Comment	Wellbore
0.00	10848.75	NaviTrak (Standard)		No. 1H PWB

Cimarex Energy Co. of Colorado

Topacio Federal 28 Com No. 1

SPUDDED 02-04-99

API 30-025-34522

Proposed Hz Delaware RC

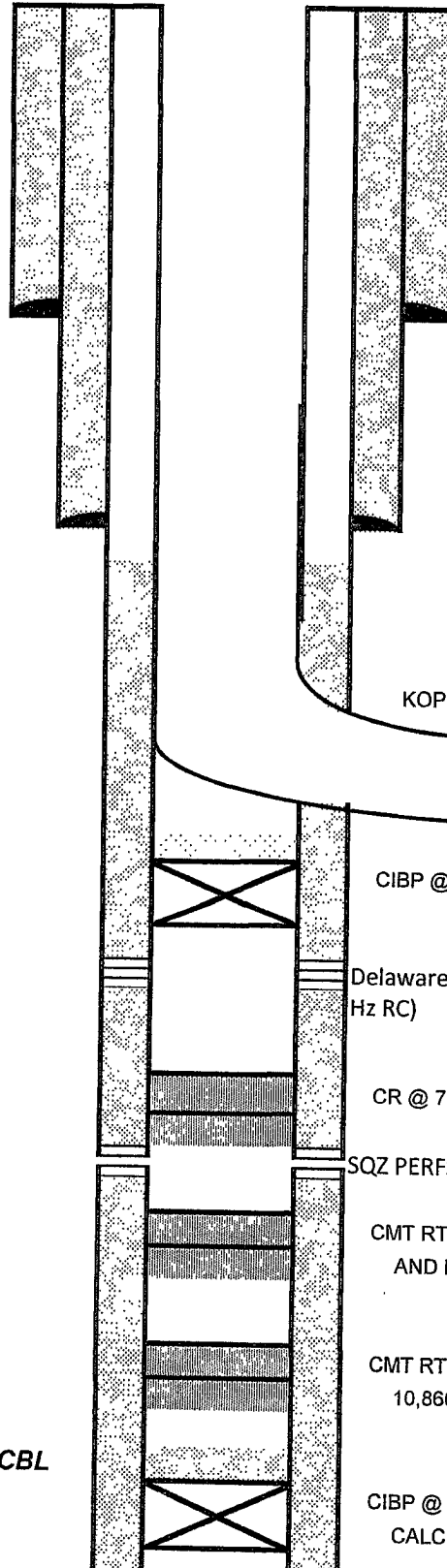
KB:
CH:
GL: 3598' GR

1650 FNL & 1980 FEL
28-19S-33E
Unit Letter G
Lea County, NM

Casing Strings:

13 1/2" 48# H-40 (17 1/2" hole)
360 sx
TOC @ surf

8 3/4" 32# J-55, S-80 (11" hole)
1500 sx
TOC @ Surf



KOP @ 7,443' (4 1/2" HOLE)

CIBP @ 7,455' W 2 SX SAND

Delaware perms 7,613-60' (to be sqzd before Hz RC)

CR @ 7,680', SQZ W 125 SX

SQZ PERFS @ 7,695'

CMT RT @ 7,850', PERF SQZ HOLES @ 8,080'
AND PLUG FROM 8,080-7,900'

CMT RT @ 10,600', PERF SQZ HOLES @
10,860' AND PLUG FROM 10,860-10,650'

CIBP @ 13,152' W 30 sx cmt
CALCULATED TOC 12800'

TOC 12100' by CBL

**Topacio Federal 28 Com No. 1
30-025-34522
Cimarex Energy Co. of Colorado
August 3, 2009
Conditions of Approval**

- 1. Surface disturbance beyond the existing pad must have prior approval.**
- 2. Closed loop system required.**
- 3. Notify BLM at 575-393-3615 a minimum of 4 hours prior to starting work.**
- 4. 3M BOP required and is to be tested prior to setting CIBP at 7455'.**
- 5. Plugs at top of Wolfcamp and Bone Spring formations should already be set prior to starting the horizontal drilling.**
- 6. When the well is plugged, cement will be placed on top of the CIBP at 7455'.**
- 7. No mud weight was listed, used a 9.0 ppg mud.**
- 8. Operator to attempt to establish an injection rate down the 5-1/2" by 8-5/8" annulus. If a rate can be established, operator will do a Bradenhead squeeze. A CBL will be required to determine the results of the Bradenhead squeeze.**
- 9. If a Bradenhead squeeze is not possible, an annulus monitoring procedure will be developed.**
- 10. Subsequent sundry and completion report required.**
- 11. This well will be removed from Communitization Agreement 103150, which was for the Atoka and Morrow formations, upon receipt of the subsequent sundry detailing the plugging operations.**
- 12. A Communitization Agreement covering the acreage dedicated to this well must be filed for approval with the BLM. The effective date of the agreement shall be prior to any sales. Operator to supply NMOCD order or description of pool which details the vertical and horizontal extent of pool to verify that requested communitization is within an approved and established pool. Currently, there is no Delaware Pool in Section 28 and the Gem-Delaware pool is the closest.**