

RECEIVED

MAR 03 2010

District I
1625 N. French Dr., Hobbs, NM 88240
District II
1301 W. Grand Avenue, Artesia, NM 88210
District III
1000 Rio Brazos Rd., Aztec, NM 87410
District IV
1220 S. St. Francis Dr., Santa Fe, NM 87505

HOBBSOCD

State of New Mexico
Energy, Minerals & Natural Resources Department
OIL CONSERVATION DIVISION
1220 South St. Francis Dr.
Santa Fe, NM 87505

RECEIVED

Form C-102
Revised October 12, 2005
Submit to Appropriate District Office
State Lease- 4 Copies
Fee Lease- 3 Copies

HOBBSOCD

☐ AMENDED REPORT

WELL LOCATION AND ACREAGE DEDICATION PLAT

API Number 30-025-39559	Pool Code 60610	Pool Name Tulk, Wolfcamp, North
Property Code 37892	Property Name INCREDIBLE HULK "26" STATE COM	Well Number 1
OCRID No. 7377	Operator Name EOG RESOURCES, INC.	Elevation 4290.7'

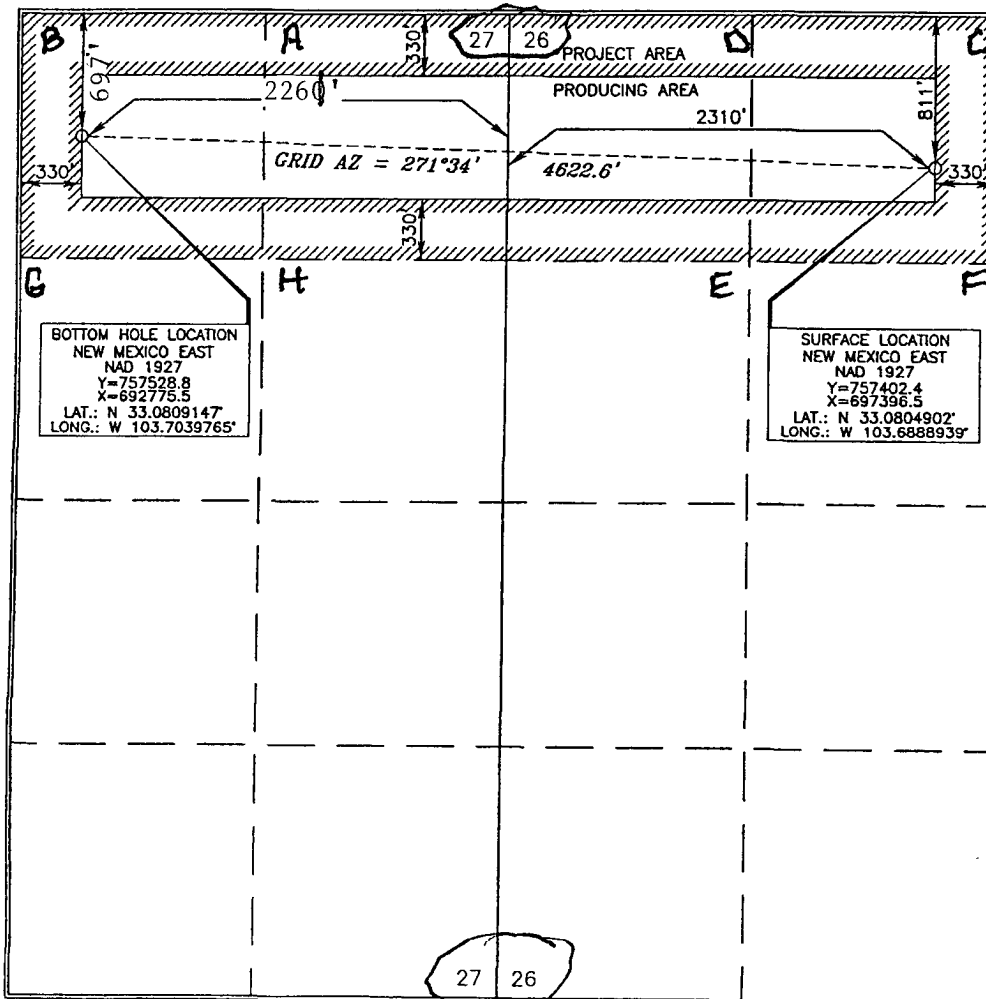
Surface Location

UL or lot no.	Section	Township	Range	Lot Idn	Feet from the	North/South line	Feet from the	East/West line	County
C	26	14 SOUTH	32 EAST, N.M.P.M.		811	NORTH	2310	WEST	LEA

Bottom Hole Location If Different From Surface

UL or lot no.	Section	Township	Range	Lot Idn	Feet from the	North/South line	Feet from the	East/West line	County
B	27	14 SOUTH	32 EAST, N.M.P.M.		697	NORTH	2260	EAST	LEA
Dedicated Acres 160		Joint or Infill	Consolidation Code	Order No.					

No allowable will be assigned to this completion until all interests have been consolidated or a non-standard unit has been approved by the division.



OPERATOR CERTIFICATION

I hereby certify that the information contained herein is true and complete to the best of my knowledge and belief, and that this organization either owns a working interest or unleased mineral interest in the land including the proposed bottom hole location or has a right to drill this well at this location pursuant to a contract with an owner of such a mineral or working interest, or to a voluntary pooling agreement or a compulsory pooling order heretofore entered by the division.

Danny G. Glanton 10/21/09
Signature Date

Danny G. Glanton
Printed Name

SURVEYOR CERTIFICATION

I hereby certify that the well location shown on this plat was located from field notes of actual surveys made by me or under my supervision, and that the same is true and correct to the best of my belief.

OCTOBER 12, 2009
Date of Survey
Tony J. [Signature]
Signature and Professional Surveyor

Tony J. [Signature] 10/15/2009
Certificate Number 15079

WO# 091001WL (Rev. A) (KA)