

DISTRICT I  
P. O. Box 1980  
Hobbs, NM 88241-1980

DISTRICT II  
P. O. Box DD  
Artesia, NM 88211-0719

DISTRICT III  
1000 Rio Brazos Rd.  
Aztec, NM 87410

DISTRICT IV  
P. O. Box 2088  
Santa Fe, NM 87507-2088

State of New Mexico  
Energy, Minerals, and Natural Resources Department

Form C-102  
Revised 02-10-94  
Instructions on back

**OIL CONSERVATION DIVISION**  
P. O. Box 2088  
Santa Fe, New Mexico 87504-2088

RECEIVED  
APR 05 2010  
HOBBSDO

Submit to the Appropriate  
District Office  
State Lease - 4 copies  
Fee Lease - 3 copies

☐ AMENDED REPORT

**WELL LOCATION AND ACREAGE DEDICATION PLAT**

1 API Number <b>025-34522</b> 30-015-33431		2 Pool Code <b>27250</b> 07354		3 Pool Name <b>Gem</b> Crazy Horse; Delaware	
4 Property Code <b>300562</b>		5 Property Name <b>TOPACIO FEDERAL '28' COM</b>			6 Well Number <b>1</b>
7 OGRID No. <b>162683</b>		8 Operator Name			9 Elevation <b>3598'</b>

**" SURFACE LOCATION**

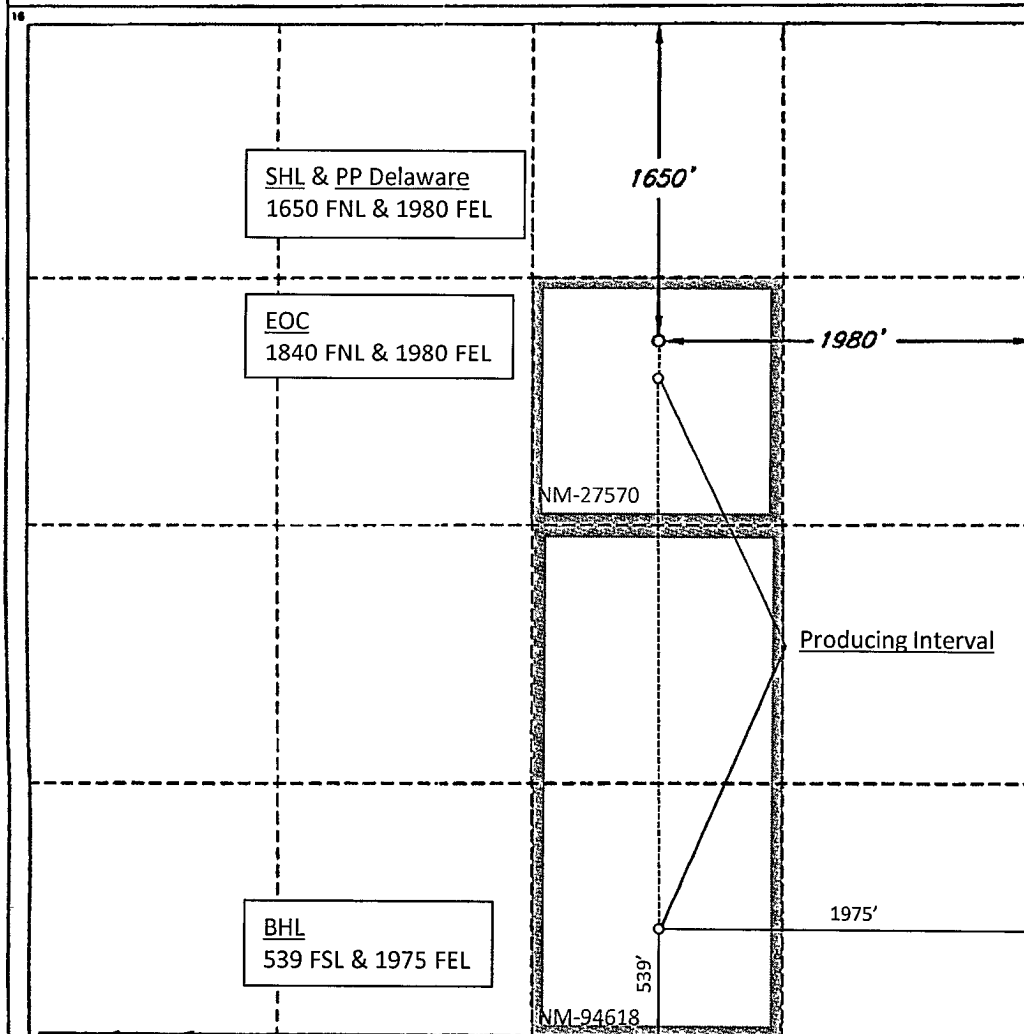
UL or lot no.	Section	Township	Range	Lot Ida	Feet from the	North/South line	Feet from the	East/West line	County
<b>G</b>	<b>28</b>	<b>19 SOUTH</b>	<b>33 EAST, N.M.P.M.</b>		<b>1650'</b>	<b>NORTH</b>	<b>1980'</b>	<b>EAST</b>	<b>LEA</b>

**" BOTTOM HOLE LOCATION IF DIFFERENT FROM SURFACE**

UL or lot no.	Section	Township	Range	Lot Ida	Feet from the	North/South line	Feet from the	East/West line	County
<b>O</b>	<b>28</b>	<b>19 SOUTH</b>	<b>33 East, N.M.P.M.</b>		<b>539</b>	<b>SOUTH</b>	<b>1975</b>	<b>EAST</b>	<b>LEA</b>

12 Dedicated Acres <b>120</b>	13 Joint or Infill	14 Consolidation Code <b>C</b>	15 Order No. <b>NSL Pending</b>
----------------------------------	--------------------	-----------------------------------	------------------------------------

NO ALLOWABLE WELL BE ASSIGNED TO THIS COMPLETION UNTIL ALL INTERESTS HAVE BEEN  
CONSOLIDATED OR A NON-STANDARD UNIT HAS BEEN APPROVED BY THE DIVISION



**OPERATOR CERTIFICATION**

I hereby certify that the information  
contained herein is true and complete  
to the best of my knowledge and belief.

Signature **Zeno Farris**  
Printed Name  
Mgr Operations Administration  
Title  
07-29-09  
Date

**SURVEYOR CERTIFICATION**

I hereby certify that the well  
location shown on this plat was  
plotted from field notes of actual  
surveys made by me or under  
my supervision, and that the  
same is true and correct to the  
best of my belief.

Date of Survey **3-23-2008**  
Signature and Seal of  
Professional Surveyor  
**12128**  
REGISTERED PROFESSIONAL SURVEYOR  
Certificate No.  
**ROGER M. ROBBINS P.S. #12128**  
JOB #60200 / 72 NW / V.H.B.