

DISTRICT I
1823 N. French Dr., Hobbs, NM 88240
DISTRICT II
1901 W. Grand Avenue, Artesia, NM 88210
DISTRICT III
1000 Rio Brazos Rd., Aztec, NM 87410
DISTRICT IV
1220 S. St. Francis Dr., Santa Fe, NM 87505

State of New Mexico
Energy, Minerals and Natural Resources Department

Form C-102
Revised October 12, 2005

Submit to Appropriate District Office
State Lease - 4 Copies
Fee Lease - 3 Copies

OIL CONSERVATION DIVISION
1220 South St. Francis Dr.
Santa Fe, New Mexico 87505

☐ AMENDED REPORT

WELL LOCATION AND ACREAGE DEDICATION PLAT

API Number 30-005-29065	Pool Code 97722	Pool Name Wildcat Abo/Wolfcamp
Property Code 37088	Property Name MIDWAY "17" FEDERAL	Well Number 4 H
OGRD No. 162683	Operator Name CIMAREX ENERGY CO. OF COLORADO	Elevation 4442'

Surface Location

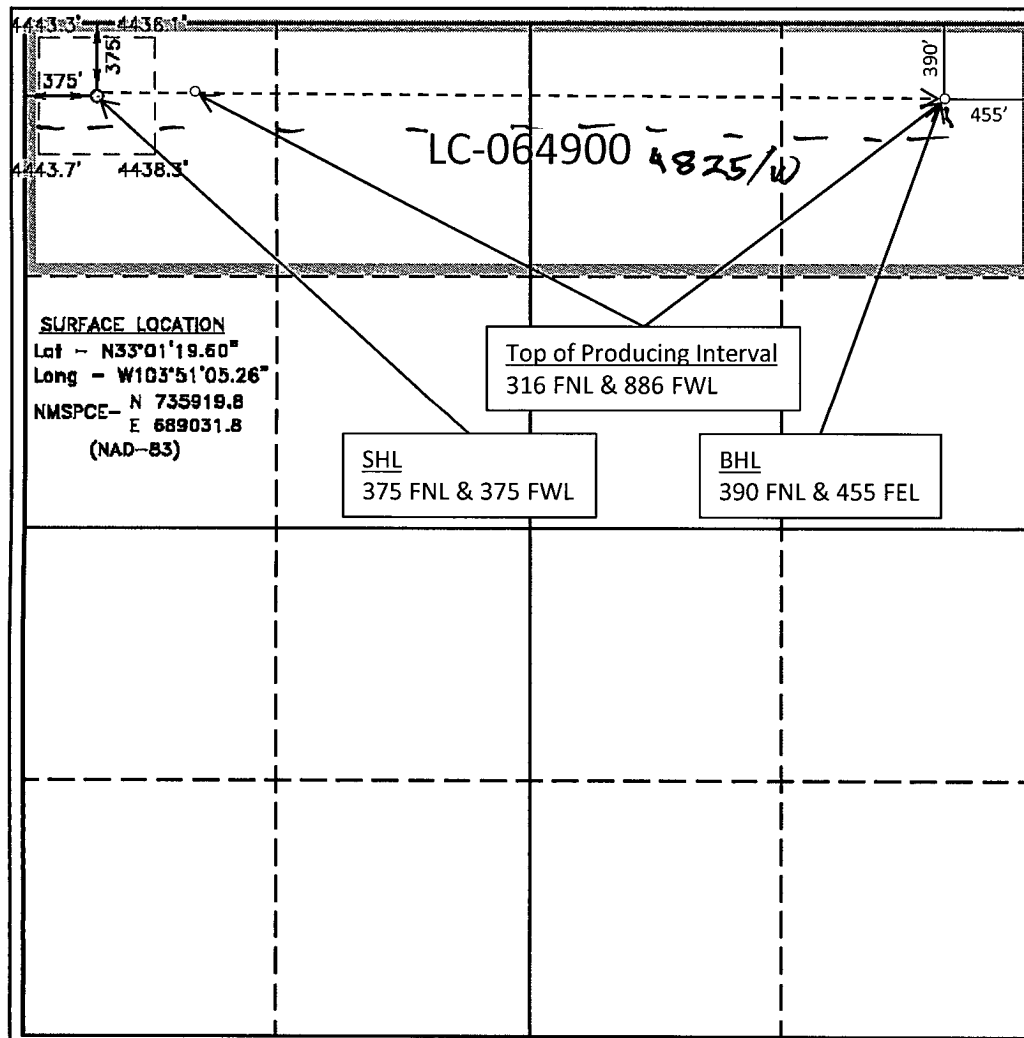
UL or lot No.	Section	Township	Range	Lot Idn	Feet from the	North/South line	Feet from the	East/West line	County
D	17	15 S	31 E		375	NORTH	375	WEST	CHAVES

Bottom Hole Location If Different From Surface

UL or lot No.	Section	Township	Range	Lot Idn	Feet from the	North/South line	Feet from the	East/West line	County
A	17	15 S	31 E		390	NORTH	455	EAST	CHAVES

Dedicated Acres 160	Joint or Infill	Consolidation Code	Order No. 4825 W
------------------------	-----------------	--------------------	---------------------

NO ALLOWABLE WILL BE ASSIGNED TO THIS COMPLETION UNTIL ALL INTERESTS HAVE BEEN CONSOLIDATED
OR A NON-STANDARD UNIT HAS BEEN APPROVED BY THE DIVISION



OPERATOR CERTIFICATION

I hereby certify that the information contained herein is true and complete to the best of my knowledge and belief, and that this organization either owns a working interest or released mineral interest in the land including the proposed bottom hole location pursuant to a contract with an owner of such a mineral or working interest, or to a voluntary pooling agreement or a compulsory pooling order heretofore entered by the division.

Zeno Farris 2/25/2010

Signature Date

Zeno Farris

Printed Name

SURVEYOR CERTIFICATION

I hereby certify that the well location shown on this plat was plotted from field notes of actual surveys made by me or under my supervision, and that the same is true and correct to the best of my belief.

SEPTEMBER 22, 2008

Date Surveyed

Signature of Surveyor

Professional Surveyor

Certificate No. Gary L. Jones 7977

BASIN SURVEYS