

DISTRICT I
1635 N. French Dr., Hobbs, NM 88240

DISTRICT II
1801 W. Grand Avenue, Artesia, NM 88210

DISTRICT III
1000 Rio Brazos Rd., Aztec, NM 87410

DISTRICT IV
1220 S. St. Francis Dr., Santa Fe, NM 87505

State of New Mexico
Energy, Minerals and Natural Resources Department

Form C-102
Revised October 12, 2005

Submit to Appropriate District Office
State Lease - 4 Copies
Fee Lease - 3 Copies

CONSERVATION DIVISION
1220 South St. Francis Dr.
Santa Fe, New Mexico 87505

☒ AMENDED REPORT

WELL LOCATION AND ACREAGE DEDICATION PLAT

API Number 30-005-29065	Pool Code 97722	Pool Name Wildcat
Property Code 37088	Property Name MIDWAY "17" FEDERAL	Well Number 4
OGRID No. 162683	Operator Name CIMAREX ENERGY CO. OF COLORADO	Elevation 4442'

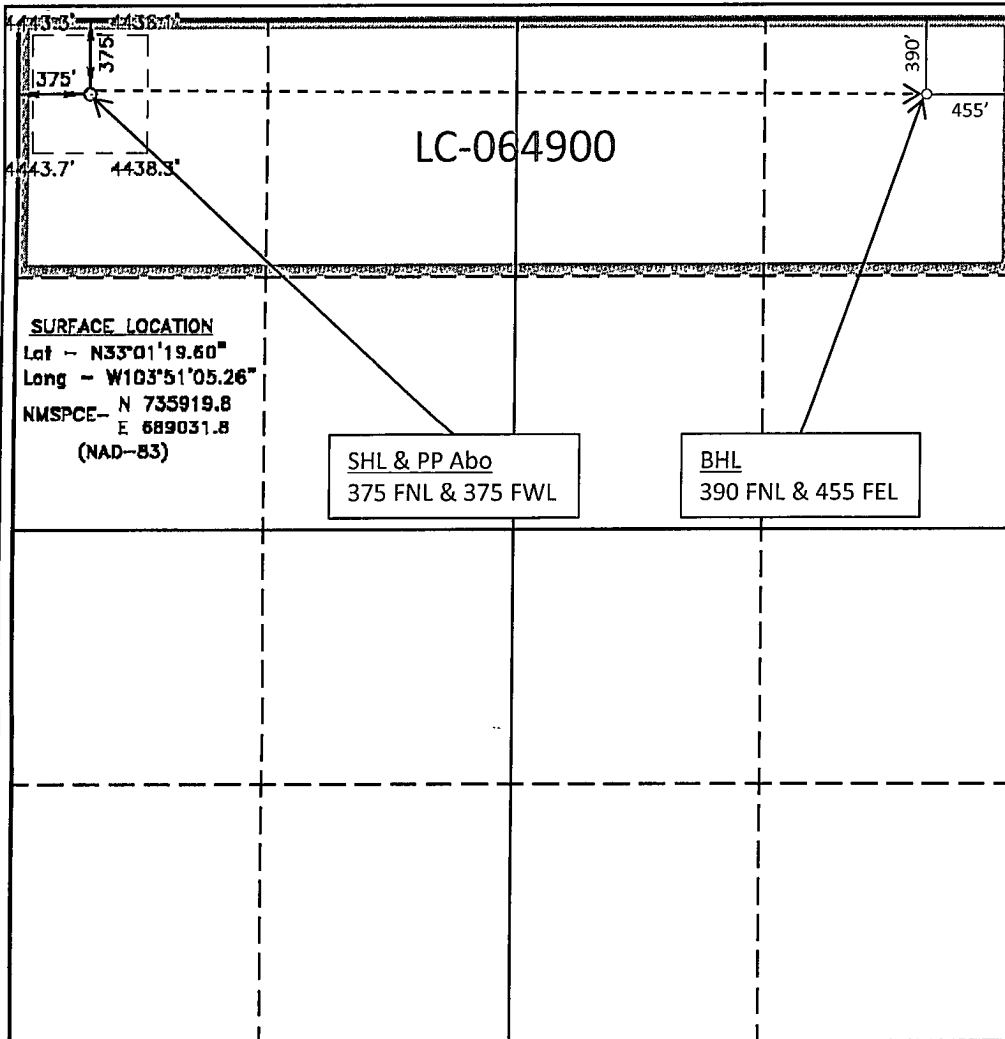
Surface Location

UL or lot No. D	Section 17	Township 15 S	Range 31 E	Lot Idn	Feet from the 375	North/South line NORTH	Feet from the 375	East/West line WEST	County CHAVES
--------------------	---------------	------------------	---------------	---------	----------------------	---------------------------	----------------------	------------------------	------------------

Bottom Hole Location If Different From Surface

UL or lot No. A	Section 17	Township 15 S	Range 31 E	Lot Idn	Feet from the 359 390	North/South line NORTH	Feet from the 455	East/West line EAST	County CHAVES
Dedicated Acres 160	Joint or Infill	Consolidation Code	Order No. 4825	West					

NO ALLOWABLE WILL BE ASSIGNED TO THIS COMPLETION UNTIL ALL INTERESTS HAVE BEEN CONSOLIDATED
OR A NON-STANDARD UNIT HAS BEEN APPROVED BY THE DIVISION



OPERATOR CERTIFICATION

I hereby certify that the information contained herein is true and complete to the best of my knowledge and belief, and that this organization either owns a working interest or unleased mineral interest in the land including the proposed bottom hole location pursuant to a contract with an owner of such a mineral or working interest, or to a voluntary pooling agreement or a compulsory pooling order heretofore entered by the division.

Zeno Farris 4/12/2010
Signature Date
Zeno Farris
Printed Name

SURVEYOR CERTIFICATION

I hereby certify that the well location shown on this plat was plotted from field notes of actual surveys made by me or under my supervision, and that the same is true and correct to the best of my belief.

SEPTEMBER 22, 2008

Date Surveyed
Signature of Surveyor
Professional Surveyor

W.C. Jones
Certificate No. Gary L. Jones 7977

BASIN SURVEYS