

RECEIVED

FEB 22 2010
HOBBSUCD

DISTRICT I
1625 N. FRENCH DR., HOBBS, NM 88240

State of New Mexico
Energy, Minerals and Natural Resources Department

Form C-102

Revised October 12, 2005

Submit to Appropriate District Office

State Lease - 4 Copies

Fee Lease - 3 Copies

DISTRICT II
1301 W. GRAND AVENUE, ARTESIA, NM 88210

OIL CONSERVATION DIVISION

11885 SOUTH ST. FRANCIS DR.
Santa Fe, New Mexico 87505

DISTRICT III
1000 RIO BRAZOS RD., AZTEC, NM 87410

DISTRICT IV
11885 S. ST. FRANCIS DR., SANTA FE, NM 87505

WELL LOCATION AND ACREAGE DEDICATION PLAT

☐ AMENDED REPORT

API Number 30-025-39286	Pool Code 19190	Pool Name Drinkard Pool
Property Code 23114	Property Name STATE C TRACT 13	Well Number 14
OGRID No. 873	Operator Name APACHE CORPORATION	Elevation 3362'

Surface Location

UL or lot No.	Section	Township	Range	Lot Idn	Feet from the	North/South line	Feet from the	East/West line	County
F	36	21-S	37-E		1331	NORTH	1530	WEST	LEA

Bottom Hole Location If Different From Surface

UL or lot No.	Section	Township	Range	Lot Idn	Feet from the	North/South line	Feet from the	East/West line	County
F	36	21-S	37-E		1331	NORTH	1330	WEST	LEA

Dedicated Acres	Joint or Infill	Consolidation Code	Order No.
40			

NO ALLOWABLE WILL BE ASSIGNED TO THIS COMPLETION UNTIL ALL INTERESTS HAVE BEEN CONSOLIDATED
OR A NON-STANDARD UNIT HAS BEEN APPROVED BY THE DIVISION

<p>GRID AZ.=269°18'35" HORIZ. DIST.=200.0'</p> <p>B.H. S.L.</p> <p>1330' 1530'</p> <p>1331' 1331'</p> <p>GEODEIC COORDINATES NAD 27 NME SURFACE LOCATION Y=525507.2 N X=874402.9 E</p> <p>LAT.=32.438885° N LONG.=103.119784° W</p> <p>LAT.=32°26'19.99"N LONG.=103°07'11.22"W</p> <p>BOTTOM HOLE LOCATION Y=525504.9 N X=874202.9 E</p>	<h3>OPERATOR CERTIFICATION</h3> <p>I hereby certify that the information herein is true and complete to the best of my knowledge and belief, and that this organization either owns a working interest or unleased mineral interest in the land including the proposed bottom hole location or has a right to drill this well at this location pursuant to a contract with an owner of such mineral or working interest, or to a voluntary pooling agreement or a compulsory pooling order heretofore entered by the division.</p> <p><i>David Catenach</i> 2/19/10 Signature Date</p> <p>David Catenach Printed Name</p> <h3>SURVEYOR CERTIFICATION</h3> <p>I hereby certify that the well location shown on this plat was plotted from field notes of actual surveys made by me or under my supervision, and that the same is true and correct to the best of my belief.</p> <p><i>Ronald J. Eidson</i> 2/27/2010 Date Surveyed Signature & Seal of Professional Surveyor</p> <p>Ronald J. Eidson 2/27/2010 DSS</p> <p>Certificate No. GARY G. EIDSON 12841 RONALD J. EIDSON 3239</p>
--	---

RECEIVED

FEB 22 2010

HOBBSCOCD

DISTRICT I

1625 N. FRENCH DR., HOBBBS, NM 88240

DISTRICT II

1301 W. GRAND AVENUE, ARTESIA, NM 88210

DISTRICT III

1000 RIO BRAZOS RD., AZTEC, NM 87410

DISTRICT IV

11885 S. ST. FRANCIS DR., SANTA FE, NM 87505

State of New Mexico
Energy, Minerals and Natural Resources Department

OIL CONSERVATION DIVISION

11885 SOUTH ST. FRANCIS DR.
Santa Fe, New Mexico 87505

Form C-102

Revised October 12, 2005

Submit to Appropriate District Office

State Lease - 4 Copies

Pec Lease - 3 Copies

WELL LOCATION AND ACREAGE DEDICATION PLAT

☐ AMENDED REPORT

API Number 30-025-39286	Pool Code 60240	Pool Name Tubb Oil & Gas Pool
Property Code 23114	Property Name STATE C TRACT 13	Well Number 14
OGRID No. 873	Operator Name APACHE CORPORATION	Elevation 3362'

Surface Location

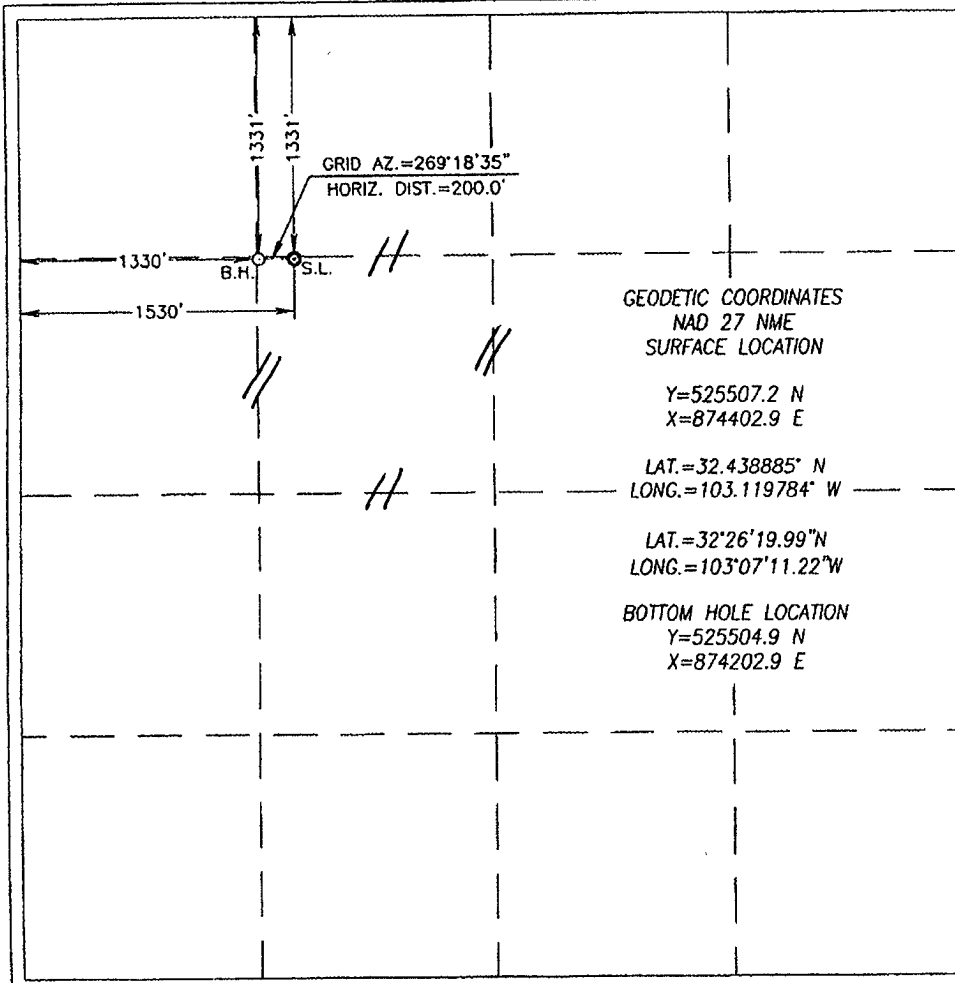
UL or lot No.	Section	Township	Range	Lot Idn	Feet from the	North/South line	Feet from the	East/West line	County
F	36	21-S	37-E		1331	NORTH	1530	WEST	LEA

Bottom Hole Location If Different From Surface

UL or lot No.	Section	Township	Range	Lot Idn	Feet from the	North/South line	Feet from the	East/West line	County
F	36	21-S	37-E		1331	NORTH	1330	WEST	LEA

Dedicated Acres 40	Joint or Infill	Consolidation Code	Order No.
------------------------------	-----------------	--------------------	-----------

NO ALLOWABLE WILL BE ASSIGNED TO THIS COMPLETION UNTIL ALL INTERESTS HAVE BEEN CONSOLIDATED
OR A NON-STANDARD UNIT HAS BEEN APPROVED BY THE DIVISION



OPERATOR CERTIFICATION

I hereby certify that the information herein is true and complete to the best of my knowledge and belief, and that this organization either owns a working interest or unleased mineral interest in the land including the proposed bottom hole location or has a right to drill this well at this location pursuant to a contract with an owner of such mineral or working interest, or to a voluntary pooling agreement or a compulsory pooling order heretofore entered by the division.

David Catanach 2/19/10
Signature Date
David Catanach
Printed Name

SURVEYOR CERTIFICATION

I hereby certify that the well location shown on this plat was plotted from field notes of actual surveys made by me or under my supervision, and that the same is true and correct to the best of my belief.

RONALD J. EIDSON 2010
Date Surveyed
Signature & Seal of Professional Surveyor
RONALD J. EIDSON 2/12/2010
Certificate No. GARY G. EIDSON 12641
RONALD J. EIDSON 3239

RECEIVED

FEB 22 2010

HOBBSD

State of New Mexico

Energy, Minerals and Natural Resources Department

DISTRICT I

1625 N. FRENCH DR., HOBBS, NM 88240

DISTRICT II

1301 W. GRAND AVENUE, ARTESIA, NM 88210

DISTRICT III

1000 RIO BRAZOS RD., AZTEC, NM 87410

OIL CONSERVATION DIVISION

11885 SOUTH ST. FRANCIS DR.

Santa Fe, New Mexico 87505

Form C-102

Revised October 12, 2005

Submit to Appropriate District Office

State Lease - 4 Copies

Fee Lease - 3 Copies

DISTRICT IV

11885 S. ST. FRANCIS DR., SANTA FE, NM 87505

WELL LOCATION AND ACREAGE DEDICATION PLAT

☐ AMENDED REPORT

APT Number 30-025-39286		Pool Code 6660	Pool Name Blinbry Oil & Gas Pool
Property Code 23114	Property Name STATE C TRACT 13		Well Number 14
OGRID No. 873	Operator Name APACHE CORPORATION		Elevation 3362'

Surface Location

UL or lot No.	Section	Township	Range	Lot Idn	Feet from the	North/South line	Feet from the	East/West line	County
F	36	21-S	37-E		1331	NORTH	1530	WEST	LEA

Bottom Hole Location If Different From Surface

UL or lot No.	Section	Township	Range	Lot Idn	Feet from the	North/South line	Feet from the	East/West line	County
F	36	21-S	37-E		1331	NORTH	1330	WEST	LEA
Dedicated Acres 40	Joint or Infill	Consolidation Code	Order No.						

NO ALLOWABLE WILL BE ASSIGNED TO THIS COMPLETION UNTIL ALL INTERESTS HAVE BEEN CONSOLIDATED
OR A NON-STANDARD UNIT HAS BEEN APPROVED BY THE DIVISION

	OPERATOR CERTIFICATION I hereby certify that the information herein is true and complete to the best of my knowledge and belief, and that this organization either owns a working interest or unleased mineral interest in the land including the proposed bottom hole location or has a right to drill this well at this location pursuant to a contract with an owner of such mineral or working interest, or to a voluntary pooling agreement or a compulsory pooling order heretofore entered by the division. Signature: <u>David Catanach</u> Date: <u>2/19/10</u> Printed Name: <u>David Catanach</u>
	SURVEYOR CERTIFICATION I hereby certify that the well location shown on this plat was plotted from field notes of actual surveys made by me or under my supervision, and that the same is true and correct to the best of my belief. Date Surveyed: <u>JANUARY 20, 2010</u> Signature & Seal of Professional Surveyor: <u>Ronald J. Eidson</u> Certificate No. <u>GARY G. EIDSON 12841</u> <u>RONALD J. EIDSON 3239</u>
	GEODETIC COORDINATES NAD 27 NME SURFACE LOCATION Y=525507.2 N X=874402.9 E LAT.=32.438885° N LONG.=103.119784° W LAT.=32°26'19.99"N LONG.=103°07'11.22"W BOTTOM HOLE LOCATION Y=525504.9 N X=874202.9 E
	DSS 5/12/2010