

DISTRICT I

1626 N. FRENCH DR., HOBBS, NM 88240

DISTRICT II

1301 W. GRAND AVENUE, ARTESIA, NM 88210

DISTRICT III

1000 Rio Brazos Rd., Aztec, NM 87410

DISTRICT IV

1220 S. ST. FRANCIS DR., SANTA FE, NM 87505

State of New Mexico

Energy, Minerals and Natural Resources Department

OIL CONSERVATION DIVISION
1220 SOUTH ST. FRANCIS DR.
Santa Fe, New Mexico 87505

Form C-102

Revised JUNE 10, 2003

Submit to Appropriate District Office

State Lease - 4 Copies

Fee Lease - 3 Copies

WELL LOCATION AND ACREAGE DEDICATION PLAT

☐ AMENDED REPORT

API Number 30-025-38709 37504	Pool Code 33820	Pool Name Jalmat (T-V-7Rvs)
Property Code 25191	Property Name JYSU	Well Number 230
OGRID No. 184860	Operator Name MELROSE OPERATING COMPANY	Elevation 3575'

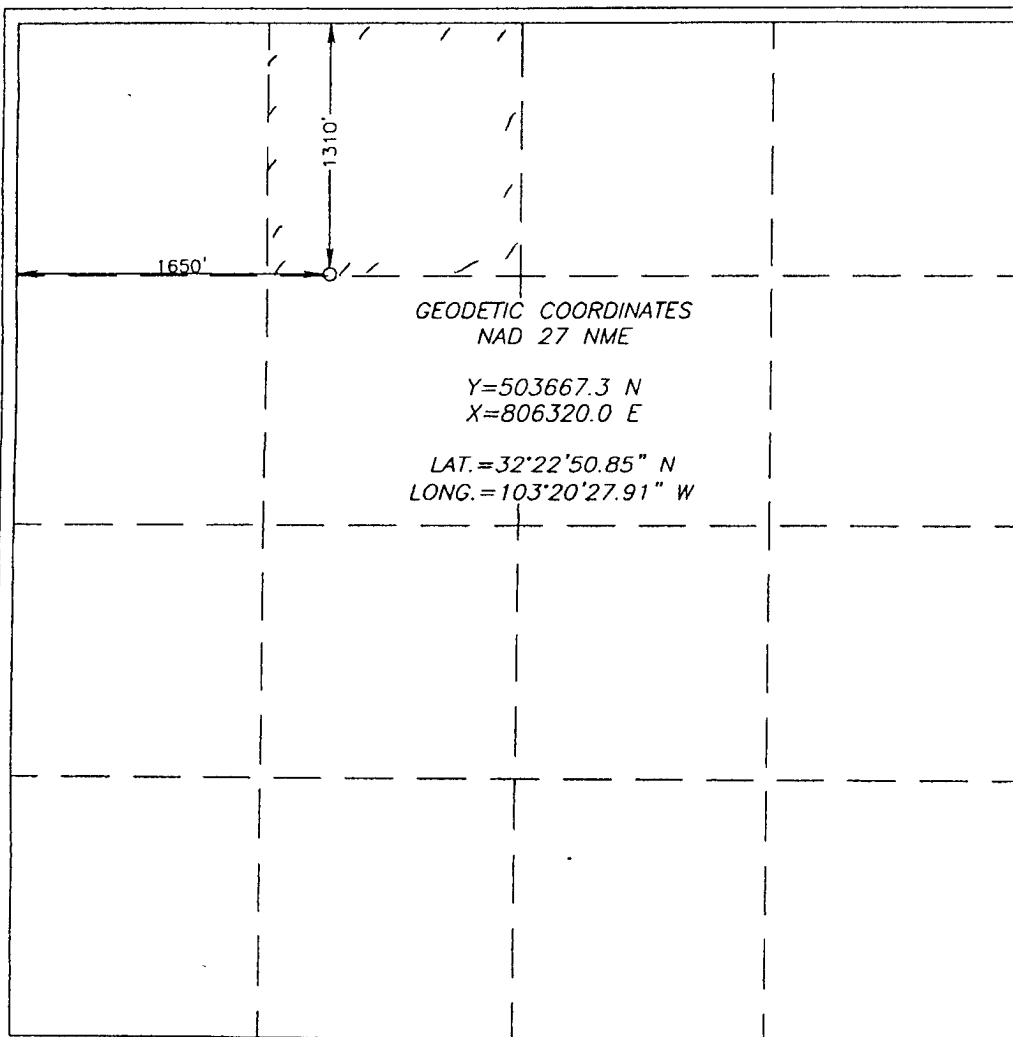
Surface Location

UL or lot No.	Section	Township	Range	Lot Idn	Feet from the	North/South line	Feet from the	East/West line	County
C	23	22-S	35-E		1310	NORTH	1650	WEST	LEA

Bottom Hole Location If Different From Surface

UL or lot No.	Section	Township	Range	Lot Idn	Feet from the	North/South line	Feet from the	East/West line	County
Dedicated Acres 40 *	Joint or Infill	Consolidation Code	Order No. * Waterflood Unit						

NO ALLOWABLE WILL BE ASSIGNED TO THIS COMPLETION UNTIL ALL INTERESTS HAVE BEEN CONSOLIDATED
OR A NON-STANDARD UNIT HAS BEEN APPROVED BY THE DIVISION



OPERATOR CERTIFICATION

I hereby certify the the information
contained herein is true and complete to the
best of my knowledge and belief

Signature

Ann E. Ritchie

Printed Name

Regulatory Agent

Title

10-5-05

Date

SURVEYOR CERTIFICATION

I hereby certify that the well location shown
on this plat was plotted from field notes of
actual surveys made by me or under my
supervision and that the same is true and
correct to the best of my belief

SEPTEMBER 26, 2005

Date Surveyed

LA

Signature & Seal of
Professional Surveyor

05.11.1493

Certificate No. GARY EIDSON

12641

dm