

Amended by OGD

District I
1625 N French Dr., Hobbs, NM 88240
District II
1301 W Grand Avenue, Artesia, NM 88210
District III
1000 Rio Brazos Rd., Aztec, NM 87410
District IV
1220 S St Francis Dr., Santa Fe, NM 87505

State of New Mexico
Energy, Minerals & Natural Resources

Form C-104
Revised Feb. 26, 2007

Oil Conservation Division
1220 South St. Francis Dr.
Santa Fe, NM 87505

Submit to Appropriate District Office
5 Copies

☐ AMENDED REPORT

I. REQUEST FOR ALLOWABLE AND AUTHORIZATION TO TRANSPORT

¹ Operator name and Address Torch Energy Services, Inc. 2600 W. I-20 Odessa, TX 79763		² OGRID Number 241401
⁴ API Number 30 - 025-11143		³ Reason for Filing Code/ Effective Date Change from gas well to oil well
⁵ Pool Name (Oil)	Jalmit - Tan-Yates-7Rurs	⁶ Pool Code 33820
⁷ Property Code 302966, 306443	⁸ Property Name Cooper Jal Unit	⁹ Well Number 110

II. ¹⁰ Surface Location

UL or lot no.	Section	Township	Range	Lot Idn	Feet from the	North/South Line	Feet from the	East/West line	County
I	18	24S	37E		1980	South	660	East	Lea

¹¹ Bottom Hole Location

UL or lot no.	Section	Township	Range	Lot Idn	Feet from the	North/South line	Feet from the	East/West line	County

¹² Lse Code	¹³ Producing Method Code	¹⁴ Gas Connection Date	¹⁵ C-129 Permit Number	¹⁶ C-129 Effective Date	¹⁷ C-129 Expiration Date

III. Oil and Gas Transporters

¹⁸ Transporter OGRID	¹⁹ Transporter Name and Address	²⁰ O/G/W
034053	Plains Marketing, LP 10 Desta Drive, Suite 200E Midland, TX 79705	O
024650	Targa Midstream Services, LP 1000 Louisiana St., Suite 4300 Houston, TX 77002	G

RECEIVED

MAY 08 2008

HOBBS OGD

IV. Well Completion Data

²¹ Spud Date	²² Ready Date	²³ TD 3587'	²⁴ PBTD 3587'	²⁵ Perforations 2994'-3208'	²⁶ DHC, MC 3560
²⁷ Hole Size	²⁸ Casing & Tubing Size	²⁹ Depth Set	³⁰ Sacks Cement		
11"	8 5/8" 32# J-55	1200'	700 sx		
7 5/8"	5 1/2" 14# J-55	3450'	250 sx		
2 3/8"	4.7# J-55 8rd EUE	3306'			

V. Well Test Data

³¹ Date New Oil	³² Gas Delivery Date	³³ Test Date 3/10/08	³⁴ Test Length 24 hours	³⁵ Tbg. Pressure	³⁶ Csg. Pressure
³⁷ Choke Size	³⁸ Oil 1	³⁹ Water 4	⁴⁰ Gas 2		⁴¹ Test Method Test Separator
⁴² I hereby certify that the rules of the Oil Conservation Division have been complied with and that the information given above is true and complete to the best of my knowledge and belief. Signature:			OIL CONSERVATION DIVISION		
Printed name: Melanie Reyes			Approved by:		
Title: Production Assistant			Title: PETROLEUM ENGINEER		
E-mail Address: reyesm@odessa-teai.com			Approval Date: AUG 27 2008		
Date: 5/6/08			Phone: 432-580-8500		

WELLBORE SCHEMATIC AND HISTORY

CURRENT COMPLETION SCHEMATIC

LEASE NAME

Cooper Jal Unit

WELL NO

110

STATUS Active

Oil

API#

30-025-11143

LOCATION 1980 FSL & 660 FEL, Sec 18, T - 24S, R - 37E, Lee County, New Mexico

SPUD DATE

TD

3587

KB

3,313'

DF

INT COMP DATE

09/20/46

PBDT

3587

GL

3,303'

GEOLOGICAL DATA

ELECTRIC LOGS

CORES, DST'S or MVD LOGS

GR-CBL-CCL (9-26-96 Halliburton)

GR-DSN (9-26-96 Halliburton)

HYDROCARBON BEARING ZONE DEPTH TOPS

Yates @ 2954'

7-Rivers @ 3210'

Queen @ 3565'

CASING PROFILE

SURF 8 5/8" - 32#, J-55 set @ 1200' Cmt'd w/700 sxs - circ cmt to surf

PROD 5 1/2" - 14#, J-55 set @ 3450' Cmt'd w/250 sxs - TOC @ 1950' from surf

LINER None

CURRENT PERFORMANCE DATA

CSG PERFS

OPEN HOLE

3450 - 3770'

11-Sep-96 Perf'd 2994 - 3010', 3020 - 31', 3039 - 50', & 3056 - 75' w/ 2 spf (114 holes - 0.45" dia)

12-Aug-05 Perf'd f/ 3188'-3208', 3157'-67', 3115'-3125', and 3082'-3102', 1 JHPF, 60 feet

15-Aug-05 Perf'd liner 3520'-30', 3544'-64', & 3580'-90' 1 JHPF, 40', 3630'-60', & 3706'-36', 2 JHPF 60'

TUBING DETAIL

11/17/2005

ROD DETAIL

11/17/05

Length (ft)		Detail
4	1	2 3/8" 4 7#, J-55, 8rd EUE tbg
2976	96	2 3/8" 4 7#, J-55, Super Max
5	1	5 1/2" x 2 3/8" TAC
320	10	2 3/8" 4 7#, J-55, Super Max
1	1	2 3/8" SN
4	1	2 3/8" Perf Sub
31	1	2 3/8" OEMA
3306		btm

Length (ft)		Detail
16	1	1 1/4" x 26' polish rod w/ 7/8" pin
0	1	1 1/4" x 1 1/2" x 16' liner
12	2	7/8" pony rods
1275	59	7/8" steel rods
1650	66	3/4" steel rods
275	11	1 1/4" K-Bars
24	1	2" x 1 1/4" X 24' RHCB w/ SS 50 slot
0	1	1" x 10" gas anchor
3252		btm

WELL HISTORY SUMMARY

20-Sep-46 Initial completion interval 3450-3587 (7 RVRs/Queen OH) shot w/ 260 qts IP =55 bopd, 0 bwpd & 60 Mcf/d (flowing).

15-Sep-57 C/O to 3567'

11-Jan-58 TA'd well

9-Feb-73 Converted to injector

14-Nov-83 Sqz'd csg leak @ 2185' - 2600' w/ 50 sxs cmt C/O to TD @ 3587' Return to injection @ 53 bwpd, TP=940 psi

28-Mar-86 Re-sqz'd csg leak @ 2185' - 2600' w/50 sxs cmt. C/O OH & accs'd w/ 3,000 gals 15% NEFE HCL & 500#s RS in

2 stages PM=1800 - 800 psi, AIR=5 bpm, ISIP=920 psi P15min=810 psi Ran Baker AD-1 pkr on 2 3/8" IPC tbg Set pkr @ 3376'

After WO: Inj @ 130 bwpd @ 900 psi. Before WO: 53 bwpd @ 940 psi.

11-Sep-96 Set 5 1/2" CIBP @ 3400', Ran GR-CBL-CCL from 3400 - 2300' Ran GR-DSN log from 3400 - 2300' Dmp 35' cmt on CIBP

at 3400' Tst csg to 500 psi OK Perf. Jalmat fromation w/ 2 spf f/ 2994'-3010', 3020'-31', 3039'-50', & 3056'-75'

(114 holes - 0.45" dia.). Acc'd'd all perfs w/3,000 gals 15% NEFE HCL & 153-7/8" RCN ballsealers Had good ball action

PM= 3951 - 1026 psig @ AIR= 9.5 bpm ISIP=vac Frac perfs 2994 - 3075 w/ 137,760 gals of 50 quality CO2 foam & 390,720#s

12/20 Brady sand PM= 4971 - 3700 psig AIR=45 bpm, ISIP=1350 psi, P5min=1249 psi, P10min=1225 psi, P15min=1185 psi C/O

f/ 2986' - 3365' Installed Equipment and placed well on production

13-Jun-01 C/O fill from 3186' to 3365' RIH with production equipment and placed well on production

23-Jun-03 POOH with rods and pump Tagged fill at 3176' Ran same pump in hole Placed on production Well would not pump Replaced pump

7-Jul-03 POOH with rods and pump Tagged fill at 3176' Ran same pump in hole Placed on production Well would not pump Replaced pump

2-Aug-05 POOH layny down 2 3/8", scanalog result 1 - yellow, 17 blue, 61 - green, and 21 - red band RIH with 4 3/4" mill tooth bit and 26 - 3 1/2"

drill collars, tagged at 3157' Drilled cement and CIBP @ 3400', cleaned out to TD at 3587' - recovered pieces of rubber and cast iron

Drilled new 4 3/4" hole from 3587' to 3770' in 6 days. Had to cleaned out fill from 3580' to bottom every day Ran in hole

with 3 1/8" Compensated Neutron Log - stucked at 3581' Load hole and pumped water, logging tool came loose Perf'd Yates f/

f/ 3188'-3208', 3157'-67', 3115'-3125', and 3082'-3102', 1 JHPF, 60 feet. RIH with BHA, tagged at 3568' - 202' of fill

RIH with 10 joints 4" FS Liner (414'); bottom of liner at 3770', top of liner at 3356'. Ran CNL f/ 3777" to 3200'.

Perf'd liner 3520'-30', 3544'-64', & 3580'-90' 1 JHPF, 40'; 3630'-60', & 3706'-36', 2 JHPF 60'. Frac'd Langlie Mattix

with XL water plus 97,706# 20/40 mesh sand Pavg= 16798# at 24.7 bpm ISIP= 1071# Slick Water Frac'd Jalmat with 19,100# 20/40

mesh sand Pavg= 1606# at 30 bpm ISIP= 1153# Cleaned out from 3212' to 3777' RIH with production string PWOP

5-Oct-05 Changed out polish rod and liner

1-Nov-05 POOH w/ plunger, rods & tubing RIH w/ RBP & Pkr Pkr failed, RIH w/ 5 1/2" full bore Pkr Found casing f/ 2315' to 2409'. Swabbed

leak, recovered 18 bbls water w/ chlorides of over 140,000 ppm Set RBP @ 3688' & Pkr @ 3673' Swabbed 84 bbls w/ chlorides o 2000

to 3000 ppm Re-set RBP & Pkr @ 3618' & 3518' Swabbed 25 bbls water, chlorides f/ 2000 to 3000 ppm Re-set RBP & Pkr @ 3470' to 3325'

Swabbed 90 bbls water w/ chlorides of 3000 ppm Reset RBP & Pkr @ 3268' & 2928' Swabbed 34 bbls water w/ chlorides of 2000 to 3000 ppm

Re-set RBP & Pkr @ 3618' & 3518' Swabbed 25 bbls water, chlorides f/ 2000 to 3000 ppm Re-set RBP & Pkr @ 3268' & 2928' Swabbed 34 bbls

of water No chlorides reported POOH w/ Pkr & RBP RIH w/ bailer & cleaned sand f/ 3735' to 3774' Perf'd liner f/ 3736'-3766', 1 jhp,

1 JHPF 30'. Located EOT @ 3767', spotted w/ 10 sacks Class C Neat 2% CaCl SION Tagged cmt @ 3728' Swabbed 90 bbls

of water No chlorides reported POOH w/ Pkr & RBP RIH w/ 5 1/2" RBP & Pkr, set RBP @ 3320' to shut off Grayburg water flow Test RBP

to 1000# SION RIH w/ 2 3/8" tubing, pump & rods Load & test well to 500# PWOP

30-Nov-05 Long stroked well

TOC @ 1950'

2185'

Bad csg

cmt sqz'd

2600'

Yates @ 2954'

2 spf

2994'-3010'

3020'-31'

3039'-50'

3056'

3075'

3082'

3102'

3115'

3125'

3157'

3167'

3188'

3208'

7-Rivers @ 3210'

RBP @ 3320'

OH Interval

3450 - 3770'

Liner Perfs

3520'-30'

3544'-64'

Queen @ 3565'

3580'-90'

3630'-60'

3705'-36'

3736'

3766'

BOL @

3770'

Top 10' cement
plug at 3728'

OH ID 4 3/4 in

PREPARED BY

Larry S Adams

D Camzales

UPDATED

06-Dec-05

Surface Csg

Hole Size 11 in

Csg Size 8 5/8 in

Set @ 1200 ft

Sxs Cmt 700

Circ Yes

TOC @ surf

TOC by circ

Production Csg

Hole Size 7 5/8 in

Csg Size 5 1/2 in

Set @ 3450 ft

Sxs Cmt 250

Circ No

TOC @ 1950 f/ surf

TOC by calc

PBDT 3587 ft

TD 3587 ft

TOL 4" (FJ 11#11)
at 3,356'

DISTRICT I
1625 N. French Dr., Hobbs, NM 88240

DISTRICT II
1301 W. Grand Ave., Artesia, NM 88210

DISTRICT III
1000 Rio Brazos Rd., Aztec, NM 87410

DISTRICT IV
1220 St. Francis Dr., Santa Fe, NM 87505

State of New Mexico
Energy, Minerals and Natural Resources Department

OIL CONSERVATION DIVISION
1220 South St. Francis Drive
Santa Fe, NM 87505

Form C-1021
Revised October 12, 2005

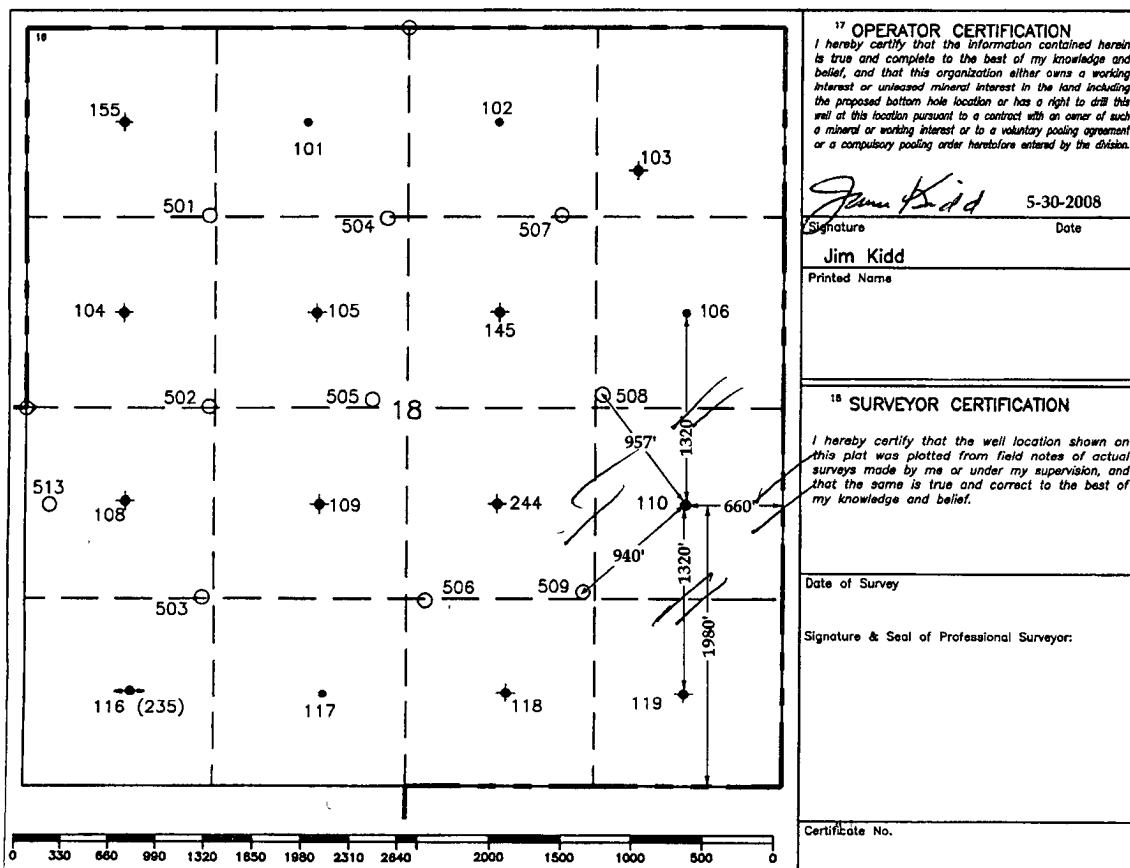
Submit to Appropriate District Office
State Lease-4 copies
Fee Lease-3 copies

WELL LOCATION AND ACREAGE DEDICATION PLAT

☐ AMENDED REPORT

1 API Number 30-025-11143		2 Pool Code 79240		3 Pool Name Jalmit; Langlie-Mattix Jan-Vals - 7 Rvs	
4 Property Code 302 960		5 Property Name Cooper Jal Unit		6 Well Number 110	
7 OGRID No. 193003		8 Operator Name TORCH ENERGY SERVICES, INC.		9 Elevation 3303' G.L.	
10 Surface Location					
UL or lot no. I	Section 18	Township 24-S	Range 37-E	Lot Idn 1980'	North/South line South
Feet from the 660'		East/West line East		County Lea	
11 Bottom Hole Location If Different From Surface					
UL or lot no.	Section	Township	Range	Lot Idn	North/South line
Feet from the		East/West line		County	
12 Dedicated Acres 40		13 Joint or Infill		14 Consolidation Code	
15 Order No.					

NO ALLOWABLE WILL BE ASSIGNED TO THIS COMPLETION UNTIL ALL INTERESTS HAVE BEEN CONSOLIDATED
OR A NON-STANDARD UNIT HAS BEEN APPROVED BY THE DIVISION.



17 OPERATOR CERTIFICATION
I hereby certify that the information contained herein is true and complete to the best of my knowledge and belief, and that this organization either owns a working interest or unleased mineral interest in the land including the proposed bottom hole location or has a right to drill this well at this location pursuant to a contract with an owner of such a mineral or working interest or to a voluntary pooling agreement or a compulsory pooling order heretofore entered by the division.

Signature: *James Kidd* Date: 5-30-2008
Printed Name: Jim Kidd

18 SURVEYOR CERTIFICATION
I hereby certify that the well location shown on this plat was plotted from field notes of actual surveys made by me or under my supervision, and that the same is true and correct to the best of my knowledge and belief.

Date of Survey:
Signature & Seal of Professional Surveyor:

Certificate No.

○ = Staked Location • = Producing Well ● = Injection Well ⊕ = Water Supply Well ♦ = Plugged & Abandon Well
⊙ = Found Section Corner, 2 or 3" Iron Pipe & GLO B.C. ○ = Found 1/4 Section Corner, 1" Iron Pipe & GLO B.C.

ADDITIONAL INFORMATION ON THE LOCATION

State Plane Coordinates			
Northing		Easting	
Latitude 32.215402°		Longitude -103.195240°	
Zone	North American Datum	Combined Grid Factor	Coordinate File
East	1983/86	0.99988900	
Drawing File		Field Book	