

RECEIVED

MAY 06 2010

District I
1625 N. French Dr., Hobbs, NM 88201
District II
1301 W. Grand Avenue, Artesia, NM 88210
District III
1000 Rio Brazos Rd., Aztec, NM 87410
District IV
1220 S. St. Francis Dr., Santa Fe, NM 87505

HOBBSDO

State of New Mexico
Energy, Minerals & Natural Resources Department
OIL CONSERVATION DIVISION
1220 South St. Francis Dr.
Santa Fe, NM 87505

RECEIVED

OCT 22 2009

HOBBSDO

Form C-402

Revised October 12, 2005

Submit to Appropriate District Office

State Lease- 4 Copies

Fee Lease- 3 Copies

☐ AMENDED REPORT

WELL LOCATION AND ACREAGE DEDICATION PLAT

API Number 30-025-30560	Pool Code 9643+	Pool Name Red Hills Bone Spring North
Property Code 37893	Property Name FALCON 25 FED.	Well Number 1H
OGRID No. 7377	Operator Name EOG RESOURCES, INC.	Elevation 3566.7'

Surface Location

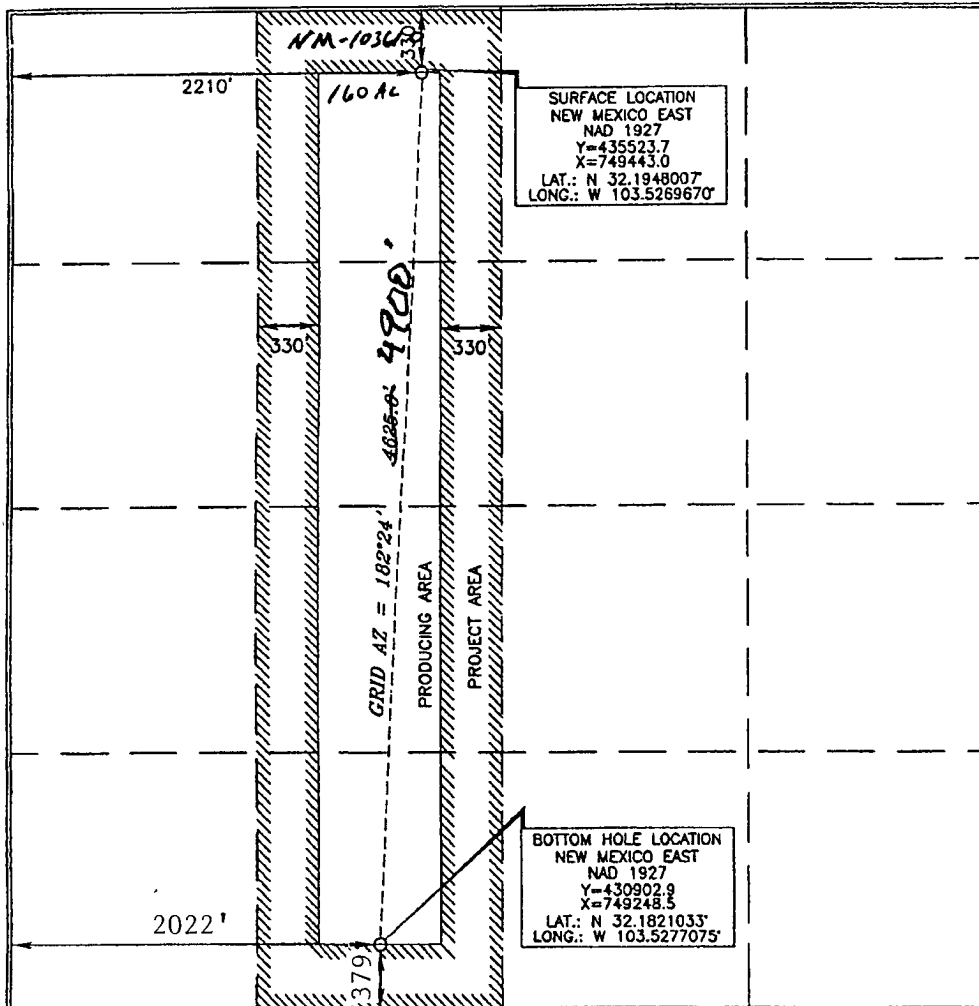
UL or lot no.	Section	Township	Range	Lot Idn	Feet from the	North/South line	Feet from the	East/West line	County
C	25	24 SOUTH	33 EAST, N.M.P.M.		330'	NORTH	2210'	WEST	LEA

Bottom Hole Location If Different From Surface

UL or lot no.	Section	Township	Range	Lot Idn	Feet from the	North/South line	Feet from the	East/West line	County
N	25	24 SOUTH	33 EAST, N.M.P.M.		379'	SOUTH	2022'	WEST	LEA

Dedicated Acres 160	Joint or Infill	Consolidation Code	Order No. 4900
-------------------------------	-----------------	--------------------	--------------------------

No allowable will be assigned to this completion until all interests have been consolidated or a non-standard unit has been approved by the division.



OPERATOR CERTIFICATION

I hereby certify that the information contained herein is true and complete to the best of my knowledge and belief, and that this organization either owns a working interest or unleased mineral interest in the land including the proposed bottom hole location or has a right to drill this well at this location pursuant to a contract with an owner of such a mineral or working interest, or to a voluntary pooling agreement or a compulsory pooling order heretofore entered by the division.

Don G. Glatton 9/18/09
Signature Date

Donny G. Glatton
Printed Name

SURVEYOR CERTIFICATION

I hereby certify that the well location shown on this plat was plotted from field notes or actual surveys made by me or under my supervision, and that the same is true and correct to the best of my belief.

Terry G. Glatton 9/16/09
Date of Survey

Terry G. Glatton
Signature and Seal of Professional Surveyor

Terry G. Glatton 9/16/09
Certificate Number 15079

WO# 090909WL (KA)

dm