

District I
1625 N. French Dr., Hobbs, NM 88240
District II
1301 W. Grand Avenue, Artesia, NM 88210
District III
1000 Rio Brazos Road, Aztec, NM 87410
District IV
1220 S. St. Francis Dr., Santa Fe, NM 87505

RECEIVED

JUN 01 2010
HOBBSOCD

State of New Mexico
Energy Minerals and Natural Resources
Oil Conservation Division
1220 South St. Francis Dr.
Santa Fe, NM 87505

Form C-101
June 16, 2001

Submit to appropriate District Office

☐ AMENDED REPORT

**APPLICATION FOR PERMIT TO DRILL, RE-ENTER, DEEPEN,
PLUGBACK, OR ADD A ZONE**

¹ Operator Name and Address Edge Petroleum Operating Co. Inc. POB 51937 Midland, TX 79710		² OGRID Number 224400 ✓
		³ API Number 30 - 025-38877
³ Property Code 35306	⁵ Property Name South Lovington 25	⁶ Well No. 1
⁹ Proposed Pool 1 Lovington; Wolfcamp 41040		¹⁰ Proposed Pool 2

⁷ Surface Location

UL or lot no. E	Section 25	Township 16S	Range 36E	Lot Idn	Feet from the 1977	North/South line North	Feet from the 330	East/West line West	County Lea
--------------------	---------------	-----------------	--------------	---------	-----------------------	---------------------------	----------------------	------------------------	---------------

⁸ Proposed Bottom Hole Location If Different From Surface

UL or lot no.	Section	Township	Range	Lot Idn	Feet from the	North/South line	Feet from the	East/West line	County
---------------	---------	----------	-------	---------	---------------	------------------	---------------	----------------	--------

Additional Well Information

¹¹ Work Type Code A ✓	¹² Well Type Code O	¹³ Cable/Rotary	¹⁴ Lease Type Code S P	¹⁵ Ground Level Elevation 3848'
¹⁶ Multiple N	¹⁷ Proposed Depth 11,200'	¹⁸ Formation Wolfcamp	¹⁹ Contractor	²⁰ Spud Date 06/15/2010

²¹ Proposed Casing and Cement Program

Hole Size	Casing Size	Casing weight/foot	Setting Depth	Sacks of Cement	Estimated TOC
N/A					

²² Describe the proposed program. If this application is to DEEPEN or PLUG BACK, give the data on the present productive zone and proposed new productive zone. Describe the blowout prevention program, if any. Use additional sheets if necessary.

A recompletion of the Wolfcamp zone is planned. Well is currently producing from the Strawn zone. This well is producing up the tubing under a packer. A plunger lift has been attempted unsuccessfully. Proposed operation consists of RIH w/7" RBP to isolate the Strawn zone. Perforate and acidize the Wolfcamp formation. Swab/pump Test Wolfcamp. Retrieve bridge plug. TIH w/ tbg., pump and rods. Commingle Strawn and Wolfcamp zones and return well to production. A downhole commingle permit will be obtained before commingling the zones. Attached is a procedure to recomplete, current WBD and proposed WBD. Upon permit approval work will begin.

²³ I hereby certify that the information given above is true and complete to the best of my knowledge and belief.
Signature:

Angela Lightner
Printed name: Angela Lightner

Title: Regulatory Consultant

E-mail Address: Angela@rkford.com

Date: 6/1/2010 Phone: 432-682-0440

OIL CONSERVATION DIVISION

Approved by:

Title: PETROLEUM ENGINEER

Approval Date: JUN 02 2010

Expiration Date:

Oil Conservation Division

Conditions of approval : Approval for drilling/workover ONLY--- CANNOT produce Downhole Commingled until DHC is approved in Santa Fe.

**Permit Expires 2 Years From Approval
Date Unless Drilling Underway**

Adding

RECEIVED

DISTRICT I
1625 N. FRENCH DR., HOBBS, NM 88240

JUN 01 2010

HOBBSOCD

State of New Mexico
Energy, Minerals and Natural Resources Department

DISTRICT II
1301 W. GRAND AVENUE, ARTESIA, NM 88210

DISTRICT III
1000 Rio Brazos Rd., Aztec, NM 87410

OIL CONSERVATION DIVISION
1220 SOUTH ST. FRANCIS DR.
Santa Fe, New Mexico 87505

Form C-102
Revised JUNE 10, 2003
Submit to Appropriate District Office
State Lease - 4 Copies
Fee Lease - 3 Copies

DISTRICT IV
1220 S. ST. FRANCIS DR., SANTA FE, NM 87505

WELL LOCATION AND ACREAGE DEDICATION PLAT

☐ AMENDED REPORT

API Number 30-025-38877	Pool Code 41040	Pool Name Lovington; Wolfcamp
Property Code 35306	Property Name SOUTH LOVINGTON 25	Well Number 1
OGRID No. 224400	Operator Name EDGE PETROLEUM OPERATING COMPANY, INC.	Elevation 3848'

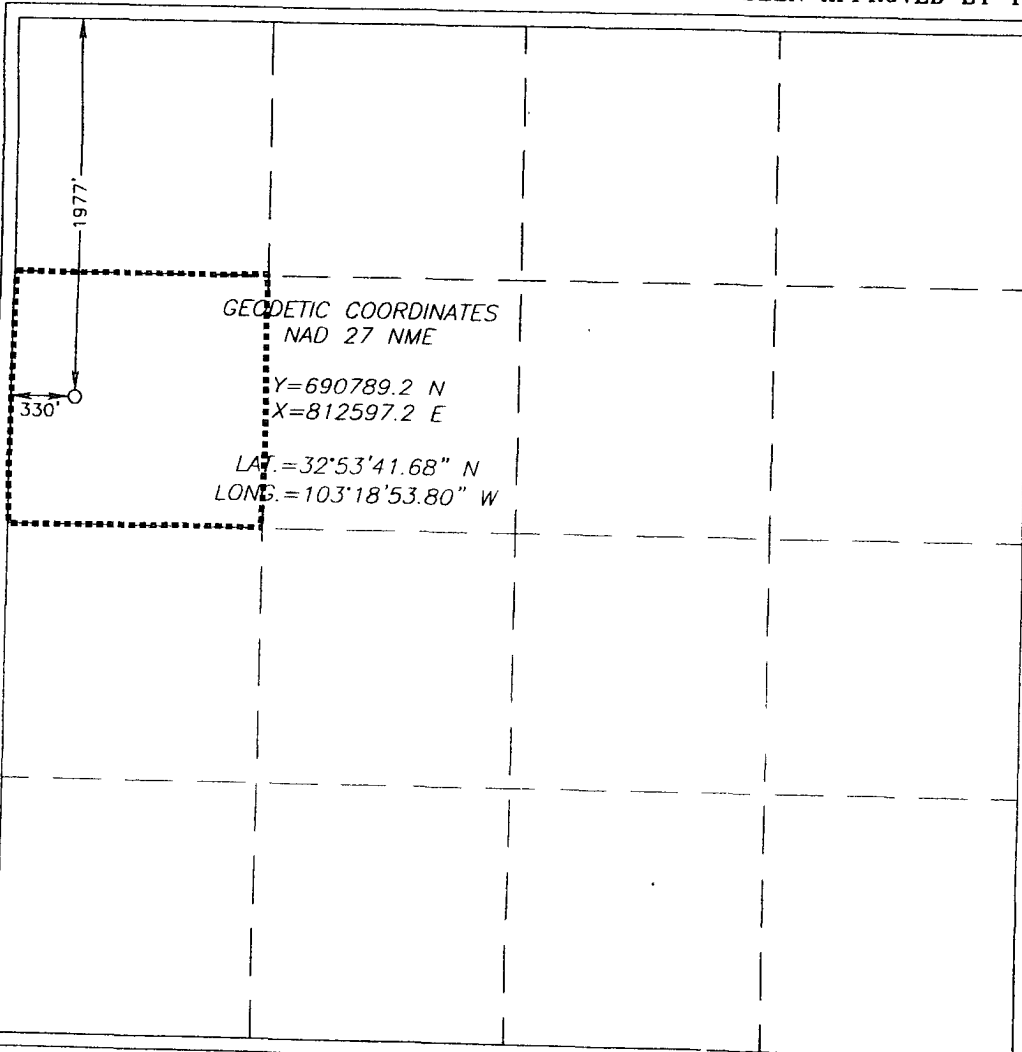
Surface Location

UL or lot No.	Section	Township	Range	Lot Idn	Feet from the	North/South line	Feet from the	East/West line	County
E	25	16-S	36-E		1977	NORTH	330	WEST	LEA

Bottom Hole Location If Different From Surface

UL or lot No.	Section	Township	Range	Lot Idn	Feet from the	North/South line	Feet from the	East/West line	County
Dedicated Acres 40	Joint or Infill	Consolidation Code	Order No.						

NO ALLOWABLE WILL BE ASSIGNED TO THIS COMPLETION UNTIL ALL INTERESTS HAVE BEEN CONSOLIDATED
OR A NON-STANDARD UNIT HAS BEEN APPROVED BY THE DIVISION



OPERATOR CERTIFICATION

I hereby certify the the information
contained herein is true and complete to the
best of my knowledge and belief

Angela Lightner
Signature

Angela Lightner
Printed Name

Reg. Consultant
Title

5-26-2010
Date

SURVEYOR CERTIFICATION

I hereby certify that the well location shown
on this plat was plotted from field notes of
actual surveys made by me or under my
supervision and that the same is true and
correct to the best of my belief

FEBRUARY 11, 2006

Date Surveyed LA REV 3/21/06

Signature & Seal of
Professional Surveyor

GARY A. EIDSON 3/22/06

06.11.0306

Certificate No. GARY EIDSON

12641

RECEIVED

DISTRICT I
1625 N. FRENCH DR., HOBBS, NM 88240

DISTRICT II
1301 W. GRAND AVENUE, ARTESIA, NM 88210

DISTRICT III
1000 Rio Brazos Rd., Aztec, NM 87410

DISTRICT IV
1220 S. ST. FRANCIS DR., SANTA FE, NM 87505

State of New Mexico
Energy, Minerals and Natural Resources Department

JUN 07 2010
HOBBSUCD

OIL CONSERVATION DIVISION 1220 SOUTH ST. FRANCIS DR. Santa Fe, New Mexico 87505

Form C-102
Revised JUNE 10, 2003
Submit to Appropriate District Office
State Lease - 4 Copies
Fee Lease - 3 Copies

WELL LOCATION AND ACREAGE DEDICATION PLAT

☐ AMENDED REPORT

API Number 30-025-38877	Pool Code 40710	Pool Name upper Lovington Penn
Property Code 35306	Property Name SOUTH LOVINGTON 25	Well Number 1
OGRID No. 324400	Operator Name EDGE PETROLEUM OPERATING COMPANY, INC.	Elevation 3848'

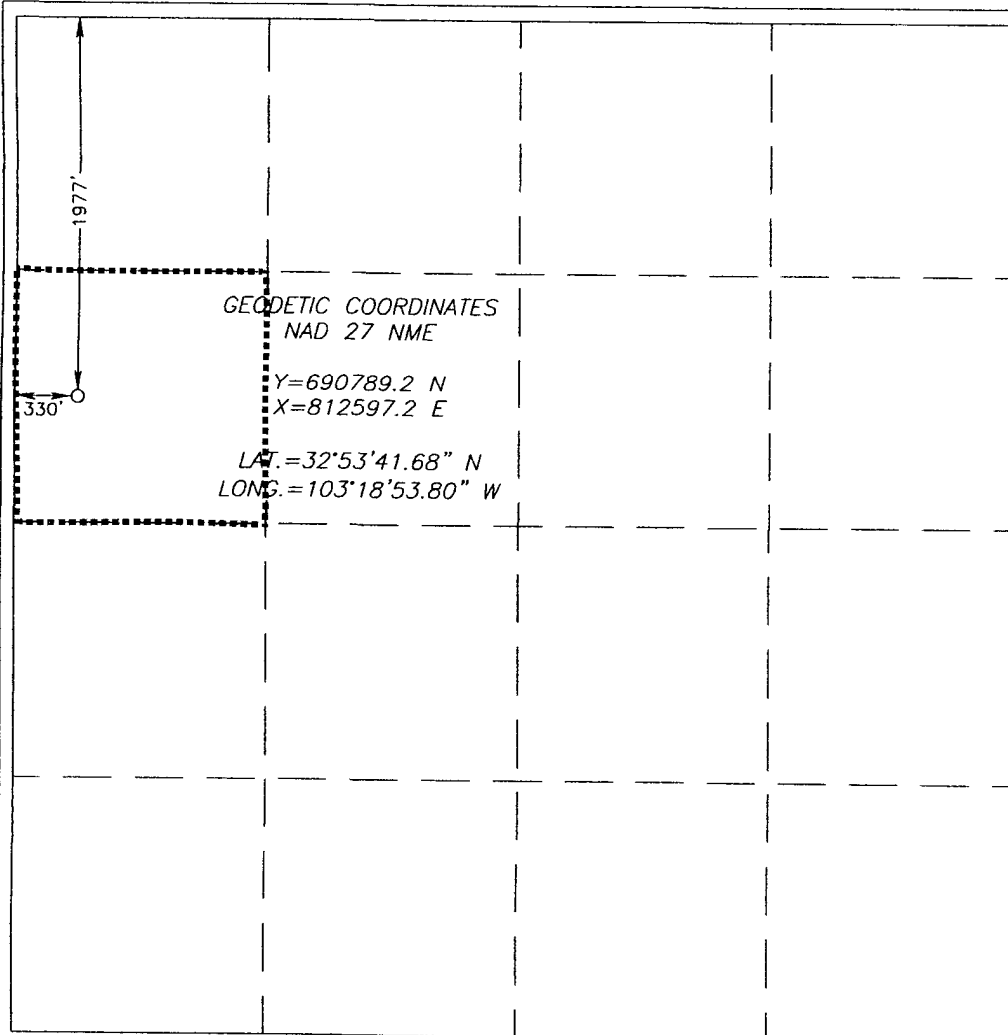
Surface Location

UL or lot No.	Section	Township	Range	Lot Idn	Feet from the	North/South line	Feet from the	East/West line	County
E	25	16-S	36-E		1977	NORTH	330	WEST	LEA

Bottom Hole Location If Different From Surface

UL or lot No.	Section	Township	Range	Lot Idn	Feet from the	North/South line	Feet from the	East/West line	County
Dedicated Acres 40		Joint or Infill	Consolidation Code		Order No.				

NO ALLOWABLE WILL BE ASSIGNED TO THIS COMPLETION UNTIL ALL INTERESTS HAVE BEEN CONSOLIDATED
OR A NON-STANDARD UNIT HAS BEEN APPROVED BY THE DIVISION



OPERATOR CERTIFICATION

I hereby certify the the information
contained herein is true and complete to the
best of my knowledge and belief.

Angela Lightner
Signature
Angela Lightner
Printed Name
Consultant-Reg.
Title
1-30-09
Date

SURVEYOR CERTIFICATION

I hereby certify that the well location shown
on this plat was plotted from field notes of
actual surveys made by me or under my
supervision and that the same is true and
correct to the best of my belief.

FEBRUARY 11, 2006

Date Surveyed **2/11/06** REV: 3/21/06

GARY EIDSON
Signature & Seal of
Professional Surveyor
06.11.0306

Certificate No. **GARY EIDSON** 12641

RECEIVED

JUN 01 2010

HOBBSOCD

EDGE PETROLEUM

PROCEDURE TO RECOMPLETE WELL IN WOLFCAMP ZONES

S. Lovington 25-1

Lea County, NM

1977' FNL & 330' FWL Sec. 25, T16S, R36E

May 19, 2010

Elevation: 3,848' GL 3,872' KB AFE #: 100421

PBTD: 11,200' KB

CURRENT STATUS: The well is currently producing from the Strawn zone at a low rate. A plunger lift has been attempted unsuccessfully. The well is producing up the tubing under a packer.

PROPOSED OPERATIONS: RIH with 7" retrievable bridge plug and isolate the Strawn zone. Perforate and acidize the Wolfcamp formation. Swab/pump test Wolfcamp zones. Retrieve bridge plug, RIH with tubing, pump, and rods. Commingle Strawn and Wolfcamp zones, return well to production.

Casing Size:..... 7" 32# HCP-110 LTC ID/Drift: 6.094" / 5.969"

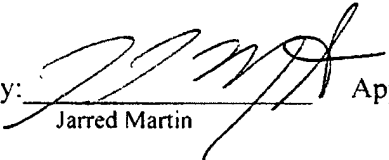
Procedure to Recomplete in Wolfcamp Zones

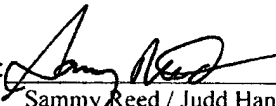
1. MIRU WSU. Bleed Down / Kill Well.
2. Unset packer. ND Wellhead / NU / Test BOP.
3. POH w/ 2 7/8" tbg & pkr. LD pkr. RU tbg test truck.
4. PU, RIH w/ bit and scraper to 11,050' (above Strawn perms @ 11,069'). Hydrotest tbg to 7000#. RD & Release tbg test truck.
5. RU pump truck, circulate hole clean w/ 2% KCl water.

6. POH, LD bit and scraper.
7. RU wireline truck, perf Wolfcamp zones @ 10,577' – 10,560', 10,120' – 10,104', and 10,086' – 10,076' w/2 spf. POH, RD wireline.
8. PU, RIH w/ Retrievable bridge plug, retrieving head, pkr, and tbg.
9. Set RBP @ 11,025' (44' above Strawn perfs).
10. PUH to 10,600'. Set pkr. Pressure test RBP & pkr to 1000#. Release pkr.
11. Spot 1,000 gal. 15% NeFe Acid across perforated interval.
12. PUH to 9,950' (126' above Wolfcamp perfs), reverse circulate 5 bbls 2% KCl down casing. Set pkr.
13. RD pump truck. RU BJ Services equipment. Acidize well per BJ recommendation.
14. RDMO BJ. RU swab unit. Swab well. RD swab.
15. Release pkr. POH tbg and pkr. LD pkr.
16. PU and RIH w/ production tbg, BHA, pump, & rods. Return well to production.
17. RD & release WSU. Monitor Wolfcamp production.
- If decision is made to commingle production from Wolfcamp and Strawn zones:**
18. MIRU WSU.
19. Unset pump, POH w/ pump & rods.
20. ND wellhead. NU BOP. POH tbg.
21. PU RBP, retrieving head. RIH w/ RBP, retrieving head, & tbg to 11,025'. Release RBP.
22. POH tbg, RBP, & retrieving head. LD RBP & retrieving head.
23. PU and RIH w/ production tbg, BHA, pump, & rods. Return well to production.

24. RD & release WSU.

ESTIMATED COST: \$250,000

Proposed By:  Jarred Martin

Approved By:  Sammy Reed / Judd Hansen

CURRENT

	Casing	Casing	Casing	Tubing
Size	13 3/8"	9 5/8"	7"	2 7/8"
Weight	48#	40#	32#	6 5#
Grade	J-55	J-55	HCP-110	N-80
Thread	ST & C	LT & C	LT & C	N rd
Depth	515'	4413'	12462'	10930 71
Sacks	560	1500		
TOC	Surface			
Hole Size	17 1/2"	12 1/4"	8 1/2"	

