

RECEIVED

JUN 07 2010

DISTRICT I

1625 N. FRENCH DR., HOBBS, NM 88240

HOBBSOCD

State of New Mexico

Energy, Minerals and Natural Resources Department

Form C-102

Revised October 12, 2005

Submit to Appropriate District Office

State Lease - 4 Copies

Fee Lease - 3 Copies

DISTRICT II

1301 W. GRAND AVENUE, ARTESIA, NM 88210

OIL CONSERVATION DIVISION

11885 SOUTH ST. FRANCIS DR.

Santa Fe, New Mexico 87505

DISTRICT III

1000 RIO BRAZOS RD., AZTEC, NM 87410

DISTRICT IV

11885 S ST. FRANCIS DR., SANTA FE, NM 87505

WELL LOCATION AND ACREAGE DEDICATION PLAT

AMENDED REPORT

API Number 30-025-39696	Pool Code 6660	Pool Name Blinebry Oil & Gas Pool
Property Code 26467	Property Name EW WALDEN	Well Number 16
OGRID No 873	Operator Name APACHE CORPORATION	Elevation 3393'

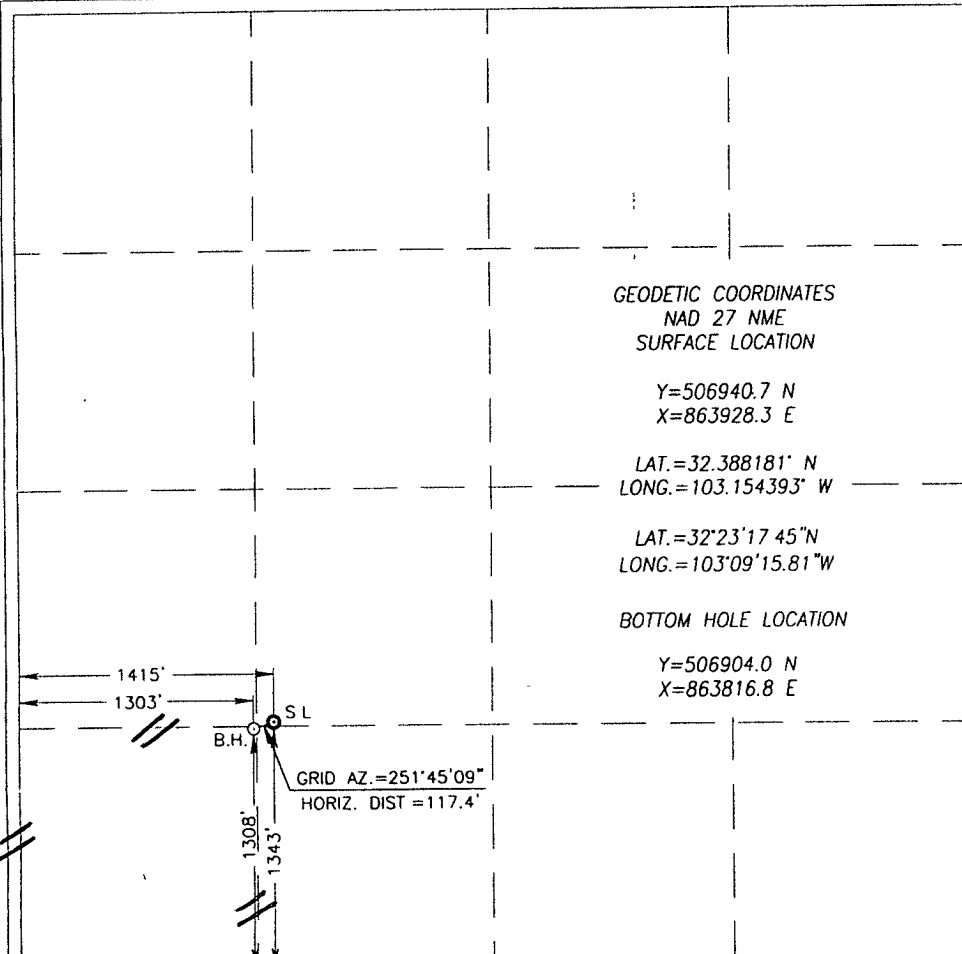
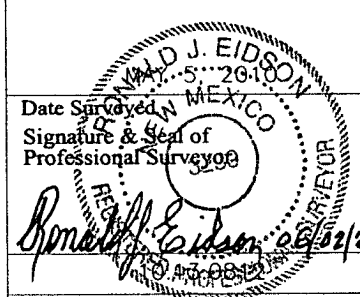
Surface Location

UL or lot No.	Section	Township	Range	Lot Idn	Feet from the	North/South line	Feet from the	East/West line	County
K	15	22-S	37-E		1343	SOUTH	1415	WEST	LEA

Bottom Hole Location If Different From Surface

UL or lot No.	Section	Township	Range	Lot Idn	Feet from the	North/South line	Feet from the	East/West line	County
M	15	22-S	37-E		1308	SOUTH	1303	WEST	LEA
Dedicated Acres 40	Joint or Infill	Consolidation Code	Order No						

NO ALLOWABLE WILL BE ASSIGNED TO THIS COMPLETION UNTIL ALL INTERESTS HAVE BEEN CONSOLIDATED
OR A NON-STANDARD UNIT HAS BEEN APPROVED BY THE DIVISION

	<p>GEODETIC COORDINATES NAD 27 NME SURFACE LOCATION</p> <p>Y=506940.7 N X=863928.3 E</p> <p>LAT.=32°38'18" N LONG.=103°15'43.9" W</p> <p>LAT.=32°23'17.45" N LONG.=103°09'15.81" W</p> <p>BOTTOM HOLE LOCATION</p> <p>Y=506904.0 N X=863816.8 E</p>	<p>OPERATOR CERTIFICATION</p> <p>I hereby certify that the information herein is true and complete to the best of my knowledge and belief, and that this organization either owns a working interest or unleased mineral interest in the land including the proposed bottom hole location or has a right to drill this well at this location pursuant to a contract with an owner of such mineral or working interest, or to a voluntary pooling agreement or a compulsory pooling order heretofore entered by the division.</p> <p><i>David Colman</i> 6/3/10 Signature Date</p> <p><i>David Colman</i> Printed Name</p>
		<p>SURVEYOR CERTIFICATION</p> <p>I hereby certify that the well location shown on this plat was plotted from field notes of actual surveys made by me or under my supervision, and that the same is true and correct to the best of my belief.</p> <p></p> <p>Date Surveyed _____ DSS Signature & Seal of Professional Surveyor <i>Ronald J. Eidson</i> 6/2/2010</p>
		<p>Certificate No. GARY G EIDSON 12641 RONALD J. EIDSON 3239</p>

RECEIVED

JUN 07 2010

DISTRICT I
1625 N. FRENCH DR., HOBBS, NM 88240

HOBBSOCD

State of New Mexico
Energy, Minerals and Natural Resources Department

Form C-102

Revised October 12, 2005

Submit to Appropriate District Office

State Lease - 4 Copies

Fee Lease - 3 Copies

DISTRICT II
1301 W. GRAND AVENUE, ARTESIA, NM 88210

OIL CONSERVATION DIVISION

11885 SOUTH ST. FRANCIS DR.
Santa Fe, New Mexico 87505

DISTRICT III
1000 RIO BRAZOS RD., AZTEC, NM 87410

DISTRICT IV
11885 S. ST. FRANCIS DR., SANTA FE, NM 87505

WELL LOCATION AND ACREAGE DEDICATION PLAT

☒ AMENDED REPORT

API Number 30-025-39696	Pool Code 60240	Pool Name Tubb Oil & Gas Pool
Property Code 26467	Property Name EW WALDEN	Well Number 16
OGRID No. 873	Operator Name APACHE CORPORATION	Elevation 3393'

Surface Location

UL or lot No	Section	Township	Range	Lot Idn	Feet from the	North/South line	Feet from the	East/West line	County
K	15	22-S	37-E		1343	SOUTH	1415	WEST	LEA

Bottom Hole Location If Different From Surface

UL or lot No	Section	Township	Range	Lot Idn	Feet from the	North/South line	Feet from the	East/West line	County
M	15	22-S	37-E		1308	SOUTH	1303	WEST	LEA

Dedicated Acres	Joint or Infill	Consolidation Code	Order No.
40			

NO ALLOWABLE WILL BE ASSIGNED TO THIS COMPLETION UNTIL ALL INTERESTS HAVE BEEN CONSOLIDATED
OR A NON-STANDARD UNIT HAS BEEN APPROVED BY THE DIVISION

	<p>GEODETIC COORDINATES NAD 27 NME SURFACE LOCATION</p> <p>Y=506940.7 N X=863928.3 E</p> <p>LAT.=32.388181° N LONG.=103.154393° W</p> <p>LAT.=32°23'17.45\" N LONG.=103°09'15.81\" W</p> <p>BOTTOM HOLE LOCATION</p> <p>Y=506904.0 N X=863816.8 E</p>	<h3>OPERATOR CERTIFICATION</h3> <p>I hereby certify that the information herein is true and complete to the best of my knowledge and belief, and that this organization either owns a working interest or unleased mineral interest in the land including the proposed bottom hole location or has a right to drill this well at this location pursuant to a contract with an owner of such mineral or working interest, or to a voluntary pooling agreement or a compulsory pooling order heretofore entered by the division.</p> <p><i>David Catnach</i> 6/3/10 Signature Date</p> <p>David Catnach Printed Name</p>
		<h3>SURVEYOR CERTIFICATION</h3> <p>I hereby certify that the well location shown on this plat was plotted from field notes of actual surveys made by me or under my supervision, and that the same is true and correct to the best of my belief.</p>
		<p>Date Surveyed: 5-29-10 Signature & Seal of Professional Surveyor: <i>Ronald J. Eidson</i> DSS</p>
		<p>Certificate No. GARY G EIDSON 12641 RONALD J. EIDSON 3239</p>

RECEIVED

DISTRICT I
1625 N. FRENCH DR., HOBBS, NM 88240

JUN 07 2010

State of New Mexico
Energy, Minerals and Natural Resources Department

Form C-102

Revised October 12, 2005

Submit to Appropriate District Office

State Lease - 4 Copies

Fee Lease - 3 Copies

DISTRICT II
1301 W. GRAND AVENUE, ARTESIA, NM 88210

HOBBSUCD

OIL CONSERVATION DIVISION

11885 SOUTH ST. FRANCIS DR.
Santa Fe, New Mexico 87505

DISTRICT III
1000 RIO BRAZOS RD., AZTEC, NM 87410

DISTRICT IV
11885 S. ST. FRANCIS DR., SANTA FE, NM 87505

WELL LOCATION AND ACREAGE DEDICATION PLAT

☒ AMENDED REPORT

API Number 30-025-39696	Pool Code 19190	Pool Name Drinkard
Property Code 26467	Property Name EW WALDEN	Well Number 16
OGRID No 873	Operator Name APACHE CORPORATION	Elevation 3393'

Surface Location

UL or lot No.	Section	Township	Range	Lot Idn	Feet from the	North/South line	Feet from the	East/West line	County
K	15	22-S	37-E		1343	SOUTH	1415	WEST	LEA

Bottom Hole Location If Different From Surface

UL or lot No.	Section	Township	Range	Lot Idn	Feet from the	North/South line	Feet from the	East/West line	County
M	15	22-S	37-E		1308	SOUTH	1303	WEST	LEA
Dedicated Acres 40	Joint or Infill	Consolidation Code	Order No.						

NO ALLOWABLE WILL BE ASSIGNED TO THIS COMPLETION UNTIL ALL INTERESTS HAVE BEEN CONSOLIDATED
OR A NON-STANDARD UNIT HAS BEEN APPROVED BY THE DIVISION

		<p>OPERATOR CERTIFICATION</p> <p>I hereby certify that the information herein is true and complete to the best of my knowledge and belief, and that this organization either owns a working interest or unleased mineral interest in the land including the proposed bottom hole location or has a right to drill this well at this location pursuant to a contract with an owner of such mineral or working interest, or to a voluntary pooling agreement or a compulsory pooling order heretofore entered by the division.</p> <p><i>David Catanach</i> 6/3/10 Signature Date</p> <p><i>David Catanach</i> Printed Name</p>
<p>GEODETIC COORDINATES NAD 27 NME SURFACE LOCATION</p> <p>Y=506940.7 N X=863928.3 E</p> <p>LAT.=32°38'18.1" N LONG.=103°15'43.9" W</p> <p>LAT.=32°23'17.45"N LONG.=103°09'15.81"W</p> <p>BOTTOM HOLE LOCATION</p> <p>Y=506904.0 N X=863816.8 E</p>		<p>SURVEYOR CERTIFICATION</p> <p>I hereby certify that the well location shown on this plat was plotted from field notes of actual surveys made by me or under my supervision, and that the same is true and correct to the best of my belief.</p> <p><i>Ronald J. Eidson</i> 6/2/2010 Date Surveyed Signature & Seal of Professional Surveyor</p> <p>Certificate No. GARY G EIDSON 12641 RONALD J. EIDSON 3239</p>

RECEIVED

DISTRICT I
1625 N. FRENCH DR., HOBBS, NM 88240

JUN 07 2010

State of New Mexico
Energy, Minerals and Natural Resources Department

Form C-102

Revised October 12, 2005

Submit to Appropriate District Office

State Lease - 4 Copies

Fee Lease - 3 Copies

DISTRICT II
1301 W GRAND AVENUE, ARTESIA, NM 88210

HOBBS

OIL CONSERVATION DIVISION

11885 SOUTH ST. FRANCIS DR.

Santa Fe, New Mexico 87505

DISTRICT III
1000 RIO BRAZOS RD., AZTEC, NM 87410

DISTRICT IV
11885 S. ST. FRANCIS DR., SANTA FE, NM 87505

WELL LOCATION AND ACREAGE DEDICATION PLAT

☒ AMENDED REPORT

API Number 30-025-39696	Pool Code 62700	Pool Name Wantz- Abo Pool
Property Code 26467	Property Name EW WALDEN	Well Number 16
OGRID No 873	Operator Name APACHE CORPORATION	Elevation 3393'

Surface Location

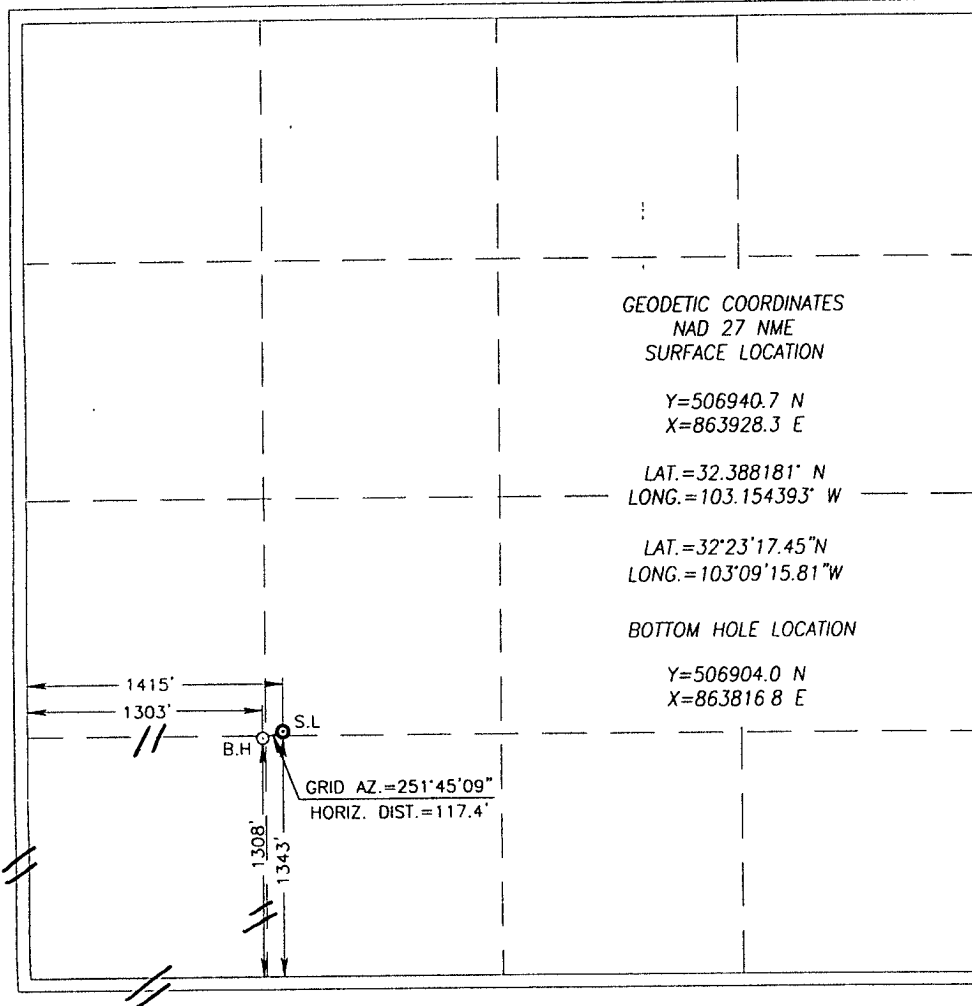
UL or lot No	Section	Township	Range	Lot Idn	Feet from the	North/South line	Feet from the	East/West line	County
K	15	22-S	37-E		1343	SOUTH	1415	WEST	LEA

Bottom Hole Location If Different From Surface

UL or lot No	Section	Township	Range	Lot Idn	Feet from the	North/South line	Feet from the	East/West line	County
M	15	22-S	37-E		1308	SOUTH	1303	WEST	LEA

Dedicated Acres	Joint or Infill	Consolidation Code	Order No
40			

NO ALLOWABLE WILL BE ASSIGNED TO THIS COMPLETION UNTIL ALL INTERESTS HAVE BEEN CONSOLIDATED
OR A NON-STANDARD UNIT HAS BEEN APPROVED BY THE DIVISION



OPERATOR CERTIFICATION

I hereby certify that the information herein is true and complete to the best of my knowledge and belief, and that this organization either owns a working interest or unleased mineral interest in the land including the proposed bottom hole location or has a right to drill this well at this location pursuant to a contract with an owner of such mineral or working interest, or to a voluntary pooling agreement or a compulsory pooling order heretofore entered by the division.

David Catanach 6/3/10
Signature Date
David Catanach
Printed Name

SURVEYOR CERTIFICATION

I hereby certify that the well location shown on this plat was plotted from field notes of actual surveys made by me or under my supervision, and that the same is true and correct to the best of my belief.

RONALD J. EIDSON
Date Surveyed **5-26-10** DSS
Signature & Seal of Professional Surveyor
Ronald J. Eidson 5/26/2010

Certificate No. GARY G EIDSON 12641
RONALD J. EIDSON 3239