

RECEIVED State of New Mexico
 Energy, Minerals and Natural Resources Department
 JUN 21 2010 OIL CONSERVATION DIVISION
HOBBS 220 South St. Francis Drive
 Santa Fe, NM 87505

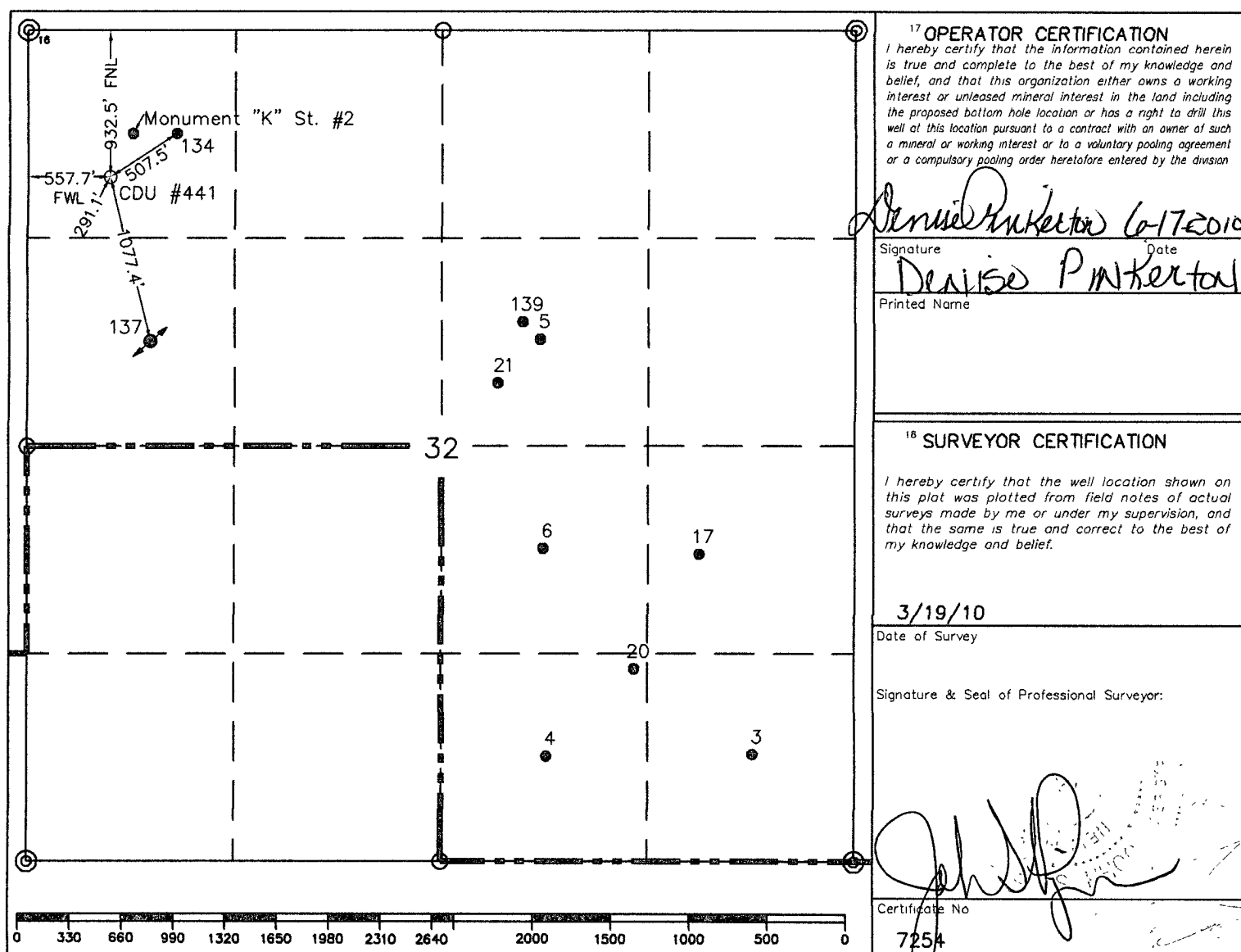
Submit to Appropriate District Office
State Lease-4 copies
Fee Lease-3 copies

☐ AMENDED REPORT

WELL LOCATION AND ACREAGE DEDICATION PLAT

1 API Number 30-025-37005		2 Pool Code 19190		3 Pool Name Drum Kard			
4 Property Code 2606		5 Property Name CENTRAL DRINKARD UNIT				6 Well Number 441	
7 GRID No. 4323		8 Operator Name CHEVRON MID-CONTINENT, LP				9 Elevation 3466'	
10 Surface Location							
UL or lot no D	Section 32	Township 21-S	Range 37-E	Lot ldn	Feet from the 932.5'	North/South line North	Feet from the 557.7'
						East/West line West	County Lea
11 Bottom Hole Location If Different From Surface							
UL or lot no.	Section	Township	Range	Lot ldn	Feet from the	North/South line	Feet from the
						East/West line	County
12 Dedicated Acres 40		13 Joint or Infill		14 Consolidation Code		15 Order No R-4256	

NO ALLOWABLE WILL BE ASSIGNED TO THIS COMPLETION UNTIL ALL INTERESTS HAVE BEEN CONSOLIDATED
OR A NON-STANDARD UNIT HAS BEEN APPROVED BY THE DIVISION.



○ = Staked Location • = Producing Well = Injection Well = Water Supply Well = Plugged & Abandon Well
 ⊙ = Found Section Corner, 2 or 3" Iron Pipe & GLO B.C. ○ = Found 1/4 Section Corner, 1" Iron Pipe & GLO B.C.

ADDITIONAL INFORMATION ON THE LOCATION

State Plane Coordinates			
Northing	525719.58 (1927 NAD= 525659.99)	Easting	893491.11 (1927 NAD= 852306.62)
Latitude 32°26'24.343"		Longitude 103°11'30.683"	
Zone	North American Datum	Combined Grid Factor	Coordinate File
East	1983/HARN	0.999888844	Weatherly83E.crd
Drawing File		Field Book	
Weatherly83E.Dwg		See 11x17" Calc. Sheet	