

District I  
1625 N French Dr, Hobbs, NM 88240  
District II  
1301 W Grand Avenue, Artesia, NM 88210  
District III  
1000 Rio Brazos Road, Aztec, NM 87410  
District IV  
1220 S St Francis Dr, Santa Fe, NM 87505

**RECEIVED** State of New Mexico  
Energy Minerals and Natural Resources

Form C-101  
May 27, 2004

**JUL 12 2010**

**HOBBSOC**

Oil Conservation Division  
1220 South St. Francis Dr.  
Santa Fe, NM 87505

Submit to appropriate District Office

☐ AMENDED REPORT

**APPLICATION FOR PERMIT TO DRILL, RE-ENTER, DEEPEN, PLUGBACK, OR ADD A ZONE**

<sup>1</sup> Operator Name and Address ConocoPhillips Company 3300 N. "A" St., Bldg. 6 Midland, TX 79705		<sup>2</sup> OGRID Number 217817
<sup>3</sup> Property Code 31422 38238	<sup>5</sup> Property Name Tourmaline State	<sup>4</sup> Well Number 30-025-39821
<sup>9</sup> Proposed Pool 1 Maljamar; Yeso, West (pool code 44500)		<sup>10</sup> Proposed Pool 2

**7 Surface Location**

UL or lot no O	Section 16	Township 17S	Range 32E	Lot Idn	Feet from the 990	North/South line SOUTH	Feet from the 2310	East/Westline EAST	County LEA
-------------------	---------------	-----------------	--------------	---------	----------------------	---------------------------	-----------------------	-----------------------	---------------

**8 Proposed Bottom Hole Location If Different From Surface**

UL or lot no	Section	Township	Range	Lot Idn	Feet from the	North/South line	Feet from the	East/Westline	County
--------------	---------	----------	-------	---------	---------------	------------------	---------------	---------------	--------

**Additional Well Information**

<sup>11</sup> Work Type Code N	<sup>12</sup> Well Type Code O	<sup>13</sup> Cable/Rotary R	<sup>14</sup> Lease Type Code S	<sup>15</sup> Ground Level Elevation 4042' GR
<sup>16</sup> Multiple	<sup>17</sup> Proposed Depth 7200'	<sup>18</sup> Formation Yeso, West	<sup>19</sup> Contractor Precision 194	<sup>20</sup> Spud Date 08/30/2010
Depth to Groundwater		Distance from nearest fresh water well		Distance from nearest surface water
Pit: Liner. Synthetic <input type="checkbox"/> milstuck Clay <input type="checkbox"/> Pit Volume: _____ bbls Drilling Method: _____				
Closed-Loop System <input type="checkbox"/> Fresh Water <input type="checkbox"/> Brine <input type="checkbox"/> Diesel/Oil-based <input type="checkbox"/> Gas/Air <input type="checkbox"/>				

**21 Proposed Casing and Cement Program**

Hole Size	Casing Size	Casing weight/foot	Setting Depth	Sacks of Cement	Estimated TOC
12.25"	8.625"	24#	850'	400 sx C	Surface
7.875"	5.5"	17#	7190'	1000 sx C	Surface

<sup>22</sup> Describe the proposed program. If this application is to DEEPEN or PLUG BACK, give the data on the present productive zone and proposed new productive zone. Describe the blowout prevention program, if any. Use additional sheets if necessary.

See attached drilling program for Drilling Mud and BOP information

**Permit Expires 2 Years From Approval  
Date Unless Drilling Underway**

<sup>23</sup> I hereby certify that the information given above is true and complete to the best of my knowledge and belief. I further certify that the drilling pit will be constructed according to NMOCD guidelines ☐, a general permit ☐, or an (attached) alternative OCD-approved plan ☐.

Printed name: Jalyn N. Fiske

Title: Regulatory Specialist

E-mail Address: Jalyn.Fiske@conocophillips.com

Date: 07/07/2010

Phone: (432)688-6813

**OIL CONSERVATION DIVISION**

Approved by

Title

Approval Date: JUL 13 2010

Expiration Date

Conditions of Approval Attached ☐

**DISTRICT II**  
1301 W. Grand Avenue, Artesia, NM 88210

**DISTRICT III**  
1000 Rio Brazos Rd., Aztec, NM 87410

DISTRICT IV AC  
1220 S. St. Francis Dr., Santa Fe, NM 87505

RECEIVED Energy

OIL CONSERVATION DIVISION

JUL 12 2010 1220 South St. Frances Dr.  
Santa Fe, NM 87505

**HOBBSOCD**

☐ AMENDED REPORT

# WELL LOCATION AND ACREAGE DEDICATION PLAT

API Number 30-025-39821	Pool Code 44500	Pool Name MALJAMAR; YESO, WEST
Property Code <del>31422</del> 38238	Property Name TOURMALINE STATE	Well Number 2
OGRID No. 217817	Operator Name CONOCOPHILLIPS	Elevation 4042'

### Surface Location

UL or lot No.	Section	Township	Range	Lot Idn	Feet from the	North/South line	Feet from the	East/West line	County
0	16	17 S	32 E		990	SOUTH	2310	EAST	LEA

## Bottom Hole Location If Different From Surface

UL or lot No.	Section	Township	Range	Lot Idn	Feet from the	North/South line	Feet from the	East/West line	County
Dedicated Acres 40	Joint or Infill	Consolidation Code		Order No.					

NO ALLOWABLE WILL BE ASSIGNED TO THIS COMPLETION UNTIL ALL INTERESTS HAVE BEEN CONSOLIDATED OR A NON-STANDARD UNIT HAS BEEN APPROVED BY THE DIVISION

<p>NOTE:</p> <p>1) Plane Coordinates shown hereon are Transverse Mercator Grid and Conform to the "New Mexico Coordinate System", New Mexico East Zone, North American Datum of 1927. Distances shown hereon are mean horizontal surface values.</p>				
<div style="display: flex; justify-content: space-between; align-items: flex-start;"><div style="text-align: left; width: 45%;"><p><u>Plane Coordinate</u> X = 673,082.3 Y = 666,120.6</p><p style="margin-top: 20px;">990'</p></div><div style="text-align: right; width: 45%;"><p>2310'</p></div></div>				

**OPERATOR CERTIFICATION**

I hereby certify the the information contained herein is true and complete to the best of my knowledge and belief, and that this organization either owns a working interest or unleased mineral interest in the land including the proposed bottom hole location or has a right to drill this well at this location pursuant to a contract with an owner of such a mineral or working interest, or to a voluntary pooling agreement or a compulsory pooling order heretofore entered by the division.

Jalyn N. Fiske

Signature

7/7/10

Date

JALYN N. FISKE

Printed Name

**SURVEYOR CERTIFICATION**

I hereby certify that the well location shown on this plat was plotted from field notes of actual surveys made by me or under my supervision and that the same is true and correct to the best of my belief

July 9, 2008

Date of Survey

[Signature]

Signature & Seal of Professional Surveyor

LVA

NEW MEXICO

12185

W.O. Num. 2008-0795

Certificate No. MACON McDONALD 12185

Tourmaline # 2
----------------

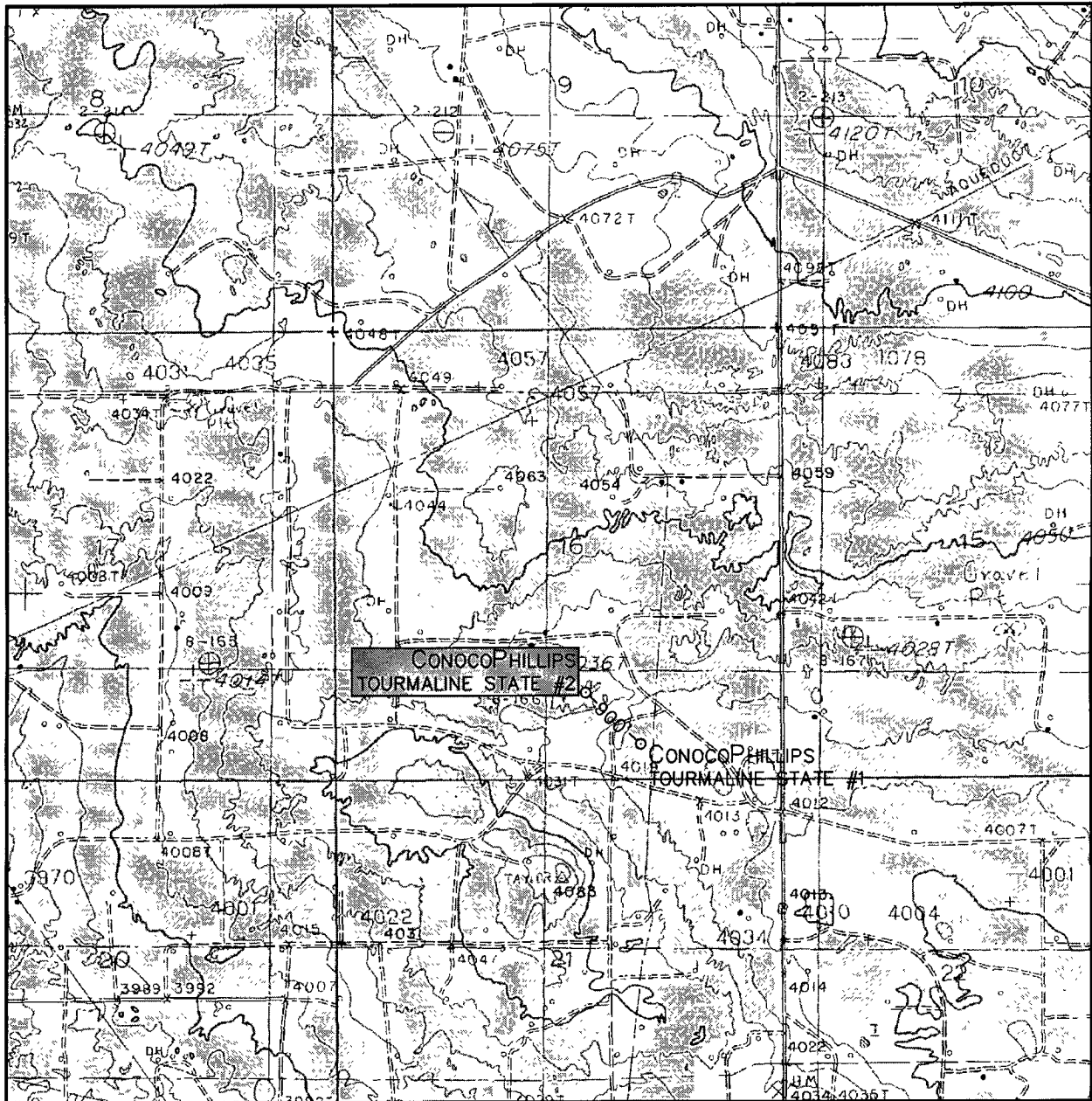
15. Proposed Depth = 7200' MD RKB
-----------------------------------

19. Proposed Casing and Cement Program						
Type	Hole Size (inches)	Casing OD (inches)	Casing Wt (lb/ft)	Setting Depth (feet)	Sacks of Cement	Estimated TOC (feet)
Surface	12.25	8.625	24	850	400	0
Prod	7.875	5.5	17	7190	1000	0

Casing and Cement Program: Additional Comments
Fresh Water and Fresh Water Mud will be used for drilling the surface hole.
Brine and Brine Based Mud will be used for drilling the production hole.

Proposed Blowout Prevention Program			
Type	Working Pressure	Test Pressure	Manufacturer
Annular	2000	1000	
Blind Ram	2000	2000	
Pipe Ram	2000	2000	

# LOCATION VERIFICATION MAP



SCALE: 1" = 2000'

CONTOUR INTERVAL:  
MALJAMAR - 5'

SEC. 16 TWP. 17-S RGE. 32-E

SURVEY N.M.P.M.

COUNTY LEA

DESCRIPTION 990' FSL & 2310' FEL

ELEVATION 4042'

OPERATOR CONOCO PHILLIPS

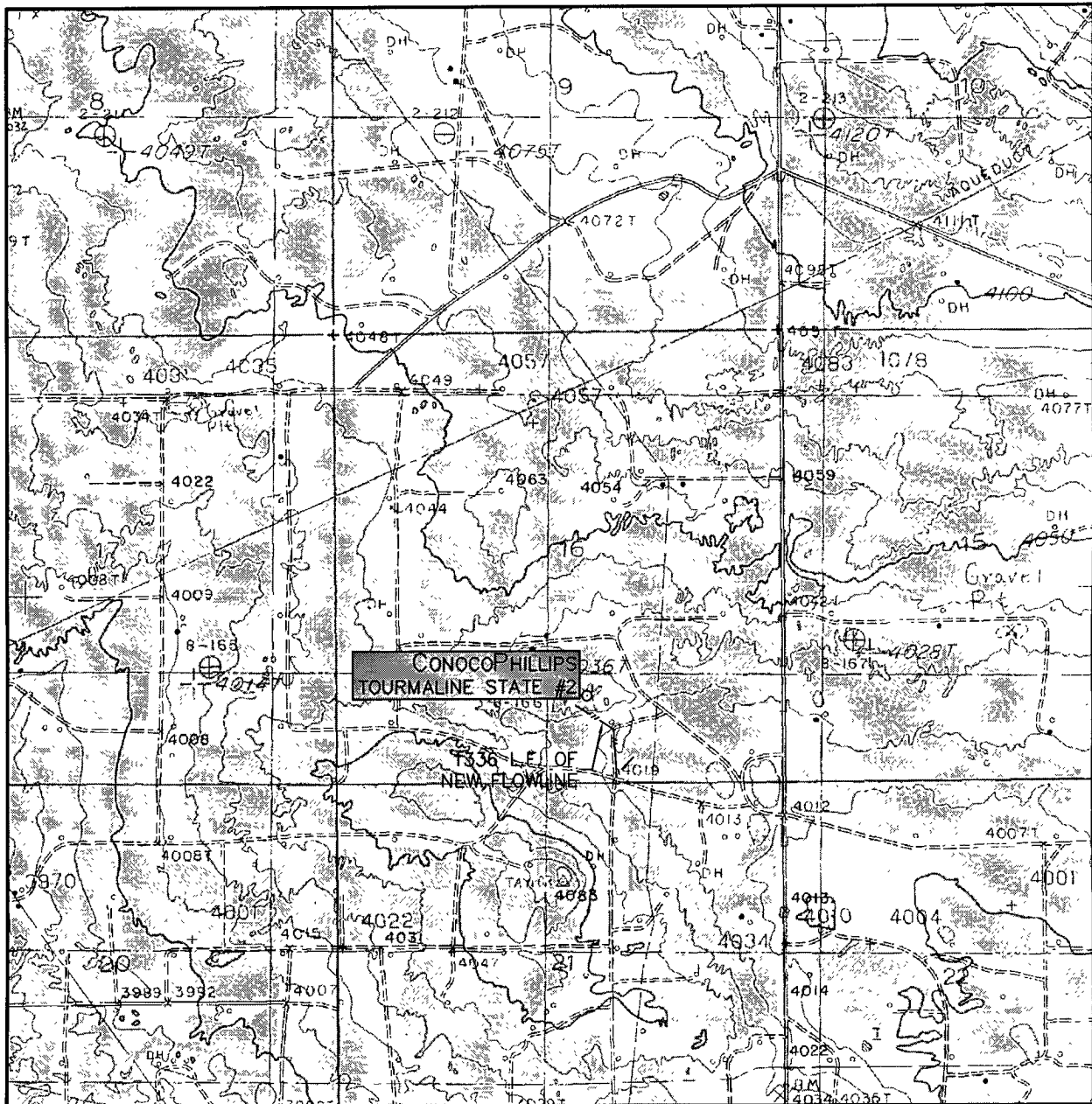
LEASE TOURMALINE STATE

U.S.G.S. TOPOGRAPHIC MAP  
MALJAMAR



110 W. LOUISIANA, STE. 110  
MIDLAND TEXAS, 79701  
(432) 687-0865 - (432) 687-0868 FAX

# LOCATION VERIFICATION MAP



SCALE: 1" = 2000'

CONTOUR INTERVAL:  
MALJAMAR - 5'

SEC. 16 TWP. 17-S RGE. 32-E

SURVEY N.M.P.M.

COUNTY LEA

DESCRIPTION 990' FSL & 2310' FEL

ELEVATION 4042'

OPERATOR CONOCOPHILLIPS

LEASE TOURMALINE STATE

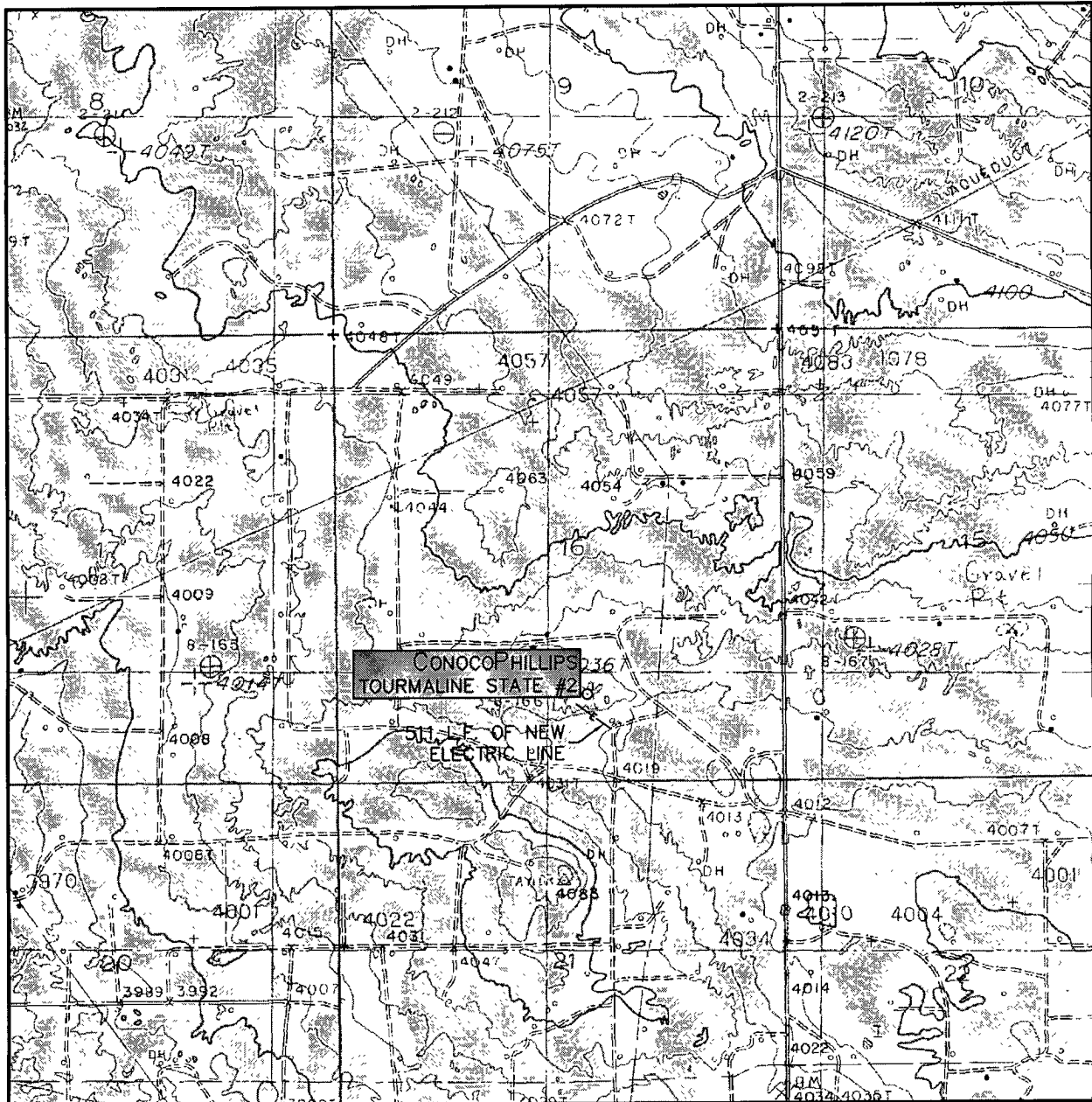
U.S.G.S. TOPOGRAPHIC MAP  
MALJAMAR



**WEST  
COMPANY**  
of Midland, Inc.

110 W. LOUISIANA, STE. 110  
MIDLAND TEXAS, 79701  
(432) 687-0865 - (432) 687-0868 FAX

# LOCATION VERIFICATION MAP



SCALE: 1" = 2000'

CONTOUR INTERVAL:  
MALJAMAR - 5'

SEC. 16 TWP. 17-S RGE. 32-E

SURVEY N.M.P.M.

COUNTY LEA

DESCRIPTION 990' FSL & 2310' FEL

ELEVATION 4042'

OPERATOR CONOCO PHILLIPS

LEASE TOURMALINE STATE

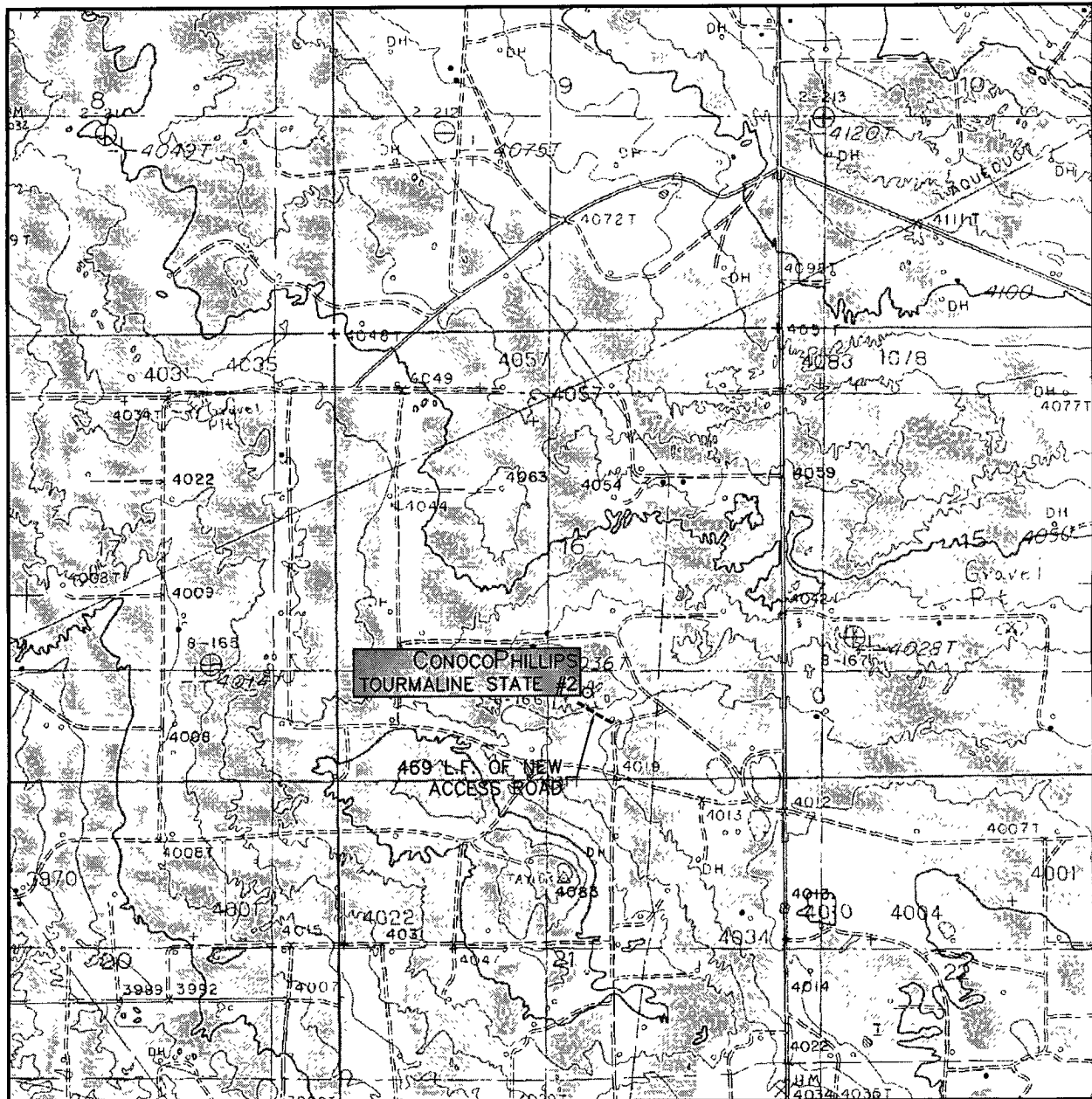
U.S.G.S. TOPOGRAPHIC MAP  
MALJAMAR



**WEST  
COMPANY**  
of Midland, Inc.

110 W. LOUISIANA, STE. 110  
MIDLAND TEXAS, 79701  
(432) 687-0865 - (432) 687-0868 FAX

# LOCATION VERIFICATION MAP



SCALE: 1" = 2000'

CONTOUR INTERVAL:  
MALJAMAR - 5'

SEC. 16 TWP. 17-S RGE. 32-E

SURVEY N.M.P.M.

COUNTY LEA

DESCRIPTION 990' FSL & 2310' FEL

ELEVATION 4042'

OPERATOR CONOCOPHILLIPS

LEASE TOURMALINE STATE

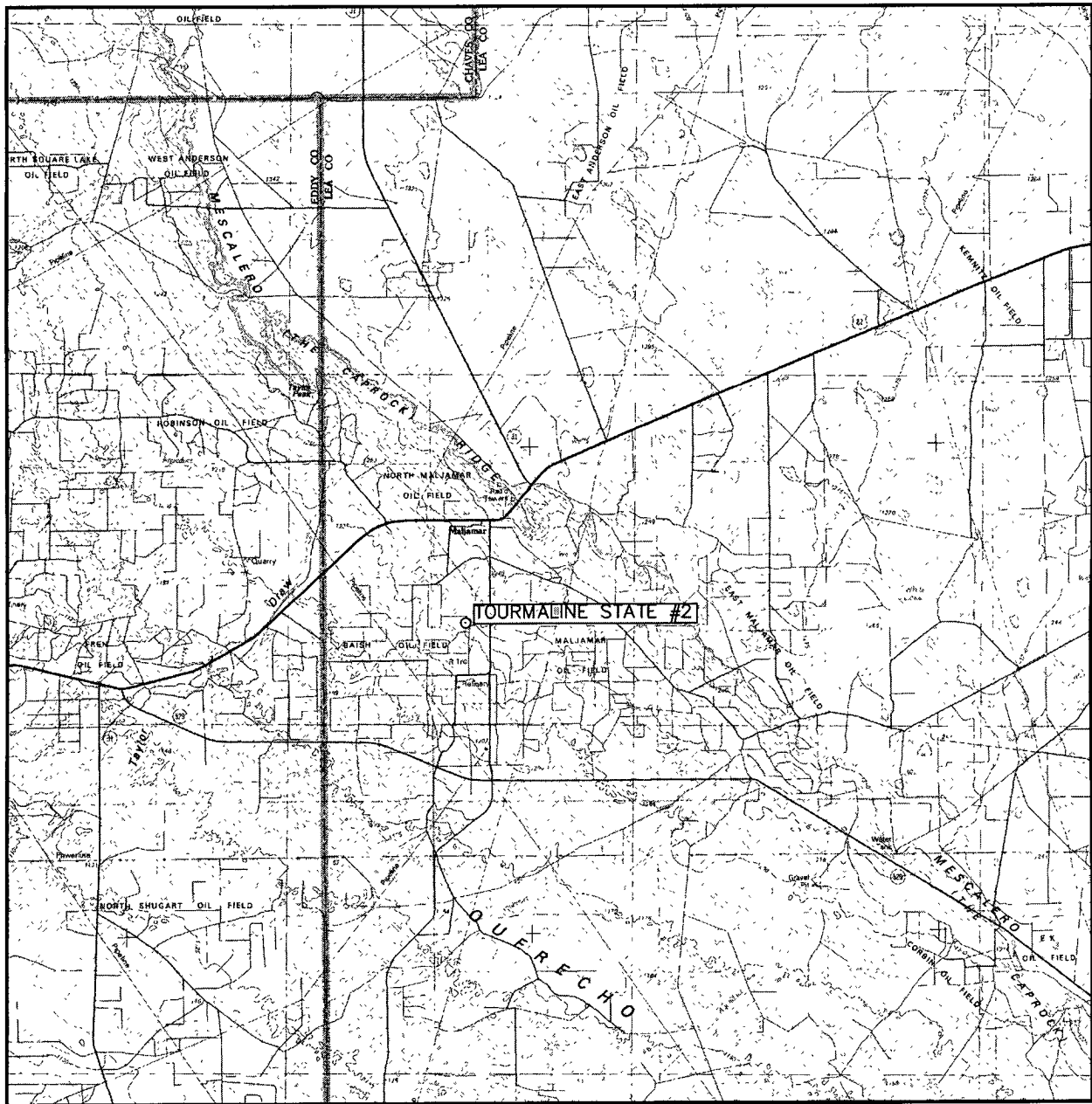
U.S.G.S. TOPOGRAPHIC MAP  
MALJAMAR



**WEST  
COMPANY**  
of Midland, Inc.

110 W. LOUISIANA, STE. 110  
MIDLAND TEXAS, 79701  
(432) 687-0865 - (432) 687-0868 FAX

# VICINITY MAP



SCALE: 1" = 3 MILES

SEC. 16 TWP. 17-S RGE. 32-E

SURVEY N.M.P.M.

COUNTY LEA

DESCRIPTION 990' FSL & 2310' FEL

ELEVATION 4042'

OPERATOR CONOCOPhillips

LEASE TOURMALINE STATE



110 W. LOUISIANA, STE. 110  
MIDLAND TEXAS, 79701  
(432) 687-0865 - (432) 687-0868 FAX