

District I
1625 N. French Dr., Hobbs, NM 88240
District II
1301 W. Grand Avenue, Artesia, NM 88210
District III
1000 Rio Brazos Road, Aztec, NM 87410
District IV
1220 S. St. Francis Dr., Santa Fe, NM 87505

State of New Mexico
Energy Minerals and Natural Resources

Form C-101
May 27, 2004

RECEIVED

JUL 26 2010

HOBBSOCD

Oil Conservation Division
1220 South St. Francis Dr.
Santa Fe, NM 87505

Submit to appropriate District Office

☐ AMENDED REPORT

APPLICATION FOR PERMIT TO DRILL, RE-ENTER, DEEPEN, PLUGBACK, OR ADD A ZONE

¹ Operator Name and Address ConocoPhillips Company 3300 N. "A" St., Bldg. 6 Midland, TX 79705		² OGRID Number 217817
³ Property Code 38238 38251	⁵ Property Name Aquamarine State	³ API Number 30-025-39849 ⁶ Well No. 1
⁹ Proposed Pool 1 Maljamar; Yeso, West (44500) ✓		¹⁰ Proposed Pool 2

⁷ Surface Location									
UL or lot no P	Section 1716	Township 17S	Range 32E	Lot Idn	Feet from the 343'	North/South line SOUTH	Feet from the 432'	East/Westline EAST	County LEA

⁸ Proposed Bottom Hole Location If Different From Surface									
UL or lot no	Section	Township	Range	Lot Idn	Feet from the	North/South line	Feet from the	East/Westline	County

Additional Well Information				
¹¹ Work Type Code N	¹² Well Type Code O	¹³ Cable/Rotary R	¹⁴ Lease Type Code S	¹⁵ Ground Level Elevation 4014' GR
¹⁶ Multiple	¹⁷ Proposed Depth 7200'	¹⁸ Formation Yeso, West	¹⁹ Contractor Precision 194	²⁰ Spud Date 09/26/2010
Depth to Groundwater		Distance from nearest fresh water well		Distance from nearest surface water
Pit Liner Synthetic <input type="checkbox"/> milst thick Clay <input type="checkbox"/> Pit Volume _____ bbls Drilling Method: _____				
Closed-Loop System <input type="checkbox"/> Fresh Water <input type="checkbox"/> Brine <input type="checkbox"/> Diesel/Oil-based <input type="checkbox"/> Gas/Air <input type="checkbox"/>				

²¹ Proposed Casing and Cement Program					
Hole Size	Casing Size	Casing weight/foot	Setting Depth	Sacks of Cement	Estimated TOC
12.25"	8.625"	24#	850'	400 sx C	Surface
7.875"	5.5"	17#	7190'	1000 sx C	Surface

²² Describe the proposed program. If this application is to DEEPEN or PLUG BACK, give the data on the present productive zone and proposed new productive zone Describe the blowout prevention program, if any Use additional sheets if necessary

See attached drilling program for Drilling Mud and BOP information.

Permit Expires 2 Years From Approval
Date Unless Drilling Underway

²³ I hereby certify that the information given above is true and complete to the best of my knowledge and belief. I further certify that the drilling pit will be constructed according to NMOCD guidelines <input type="checkbox"/> , a general permit <input type="checkbox"/> , or an (attached) alternative OCD-approved plan <input type="checkbox"/> .	
Printed name: Jalyn N. Fiske	<i>JN. Fiske</i>
Title: Regulatory Specialist	
E-mail Address: Jalyn.Fiske@conocophillips.com	
Date: 07/22/2010	Phone: (432)688-6813

OIL CONSERVATION DIVISION	
Approved by:	<i>[Signature]</i>
Title:	PETROLEUM ENGINEER
Approval Date: JUL 27 2010	Expiration Date:
CONDITION OF APPROVAL FOR APD'S "Once the well is spud, to prevent ground water contamination through whole or partial conduits from the surface, the operator shall drill without interruption through the fresh water zone or zones and shall immediately set in cement the water protection string"	

DISTRICT I
1625 N. French Dr., Hobbs, NM 88240

State of New Mexico
Energy, Minerals & Natural Resources Department

Form C-102
Revised October 12, 2005
Submit to Appropriate District Office
State Lease - 4 Copies
Fee Lease - 3 Copies

DISTRICT II
1301 W. Grand Avenue, Artesia, NM 88210

OIL CONSERVATION DIVISION
1220 South St. Frances Dr.
Santa Fe, NM 87505

RECEIVED

JUL 26 2010

HOBBSOCD

☐ AMENDED REPORT

DISTRICT III
1000 Rio Brazos Rd., Aztec, NM 87410

DISTRICT IV
1220 S. St. Francis Dr., Santa Fe, NM 87505

WELL LOCATION AND ACREAGE DEDICATION PLAT

API Number 30-025-39849	Pool Code 44500	Pool Name MALJAMAR; YESO, WEST
Property Code 38238	Property Name AQUAMARINE STATE	Well Number 1
OGRID No. 217817	Operator Name CONOCOPHILLIPS	Elevation 4014'

Surface Location

UL or lot No. P	Section 16	Township 17 S	Range 32 E	Lot Idn	Feet from the 343	North/South line SOUTH	Feet from the 432	East/West line EAST	County LEA
---------------------------	----------------------	-------------------------	----------------------	---------	-----------------------------	----------------------------------	-----------------------------	-------------------------------	----------------------

Bottom Hole Location If Different From Surface

UL or lot No.	Section	Township	Range	Lot Idn	Feet from the	North/South line	Feet from the	East/West line	County
Dedicated Acres 40	Joint or Infill	Consolidation Code	Order No.						

NO ALLOWABLE WILL BE ASSIGNED TO THIS COMPLETION UNTIL ALL INTERESTS HAVE BEEN CONSOLIDATED OR A NON-STANDARD UNIT HAS BEEN APPROVED BY THE DIVISION

<p>NOTE:</p> <p>1) Plane Coordinates shown hereon are Transverse Mercator Grid and Conform to the "New Mexico Coordinate System", New Mexico East Zone, North American Datum of 1927. Distances shown hereon are mean horizontal surface values.</p>				
				<p>Plane Coordinate X = 674,960.0 Y = 665,479.4</p> <p>4017.7' 4016.4' 432' 4010.4' 4008.2'</p>
				<p>OPERATOR CERTIFICATION</p> <p>I hereby certify the information contained herein is true and complete to the best of my knowledge and belief, and that this organization either owns a working interest or unleased mineral interest in the land including the proposed bottom hole location or has a right to drill this well at this location pursuant to a contract with an owner of such a mineral or working interest, or to a voluntary pooling agreement or a compulsory pooling order heretofore entered by the division.</p> <p><i>J. N. Fiske</i> 7/22/10 Signature Date JALYN N. FISKE Printed Name</p> <p>SURVEYOR CERTIFICATION</p> <p>I hereby certify that the well location shown on this plat was plotted from field notes of actual surveys made by me or under my supervision and that the same is true and correct to the best of my belief.</p> <p>July 2, 2010 Date of Survey Signature & Seal of Professional Surveyor <i>W. O. Num.</i> 2010-05551 Certificate No. MACON McDONALD 12185</p>

Aquamarine # 1

15. Proposed Depth = 7200' MD RKB

19. Proposed Casing and Cement Program						
Type	Hole Size (inches)	Casing OD (inches)	Casing Wt (lb/ft)	Setting Depth (feet)	Sacks of Cement	Estimated TOC (feet)
Surface	12.25	8.625	24	850	400	0
Prod	7.875	5.5	17	7190	1000	0

Casing and Cement Program: Additional Comments
Fresh Water and Fresh Water Mud will be used for drilling the surface hole.
Brine and Brine Based Mud will be used for drilling the production hole.

Proposed Blowout Prevention Program			
Type	Working Pressure	Test Pressure	Manufacturer
Annular	2000	1000	
Blind Ram	2000	2000	
Pipe Ram	2000	2000	

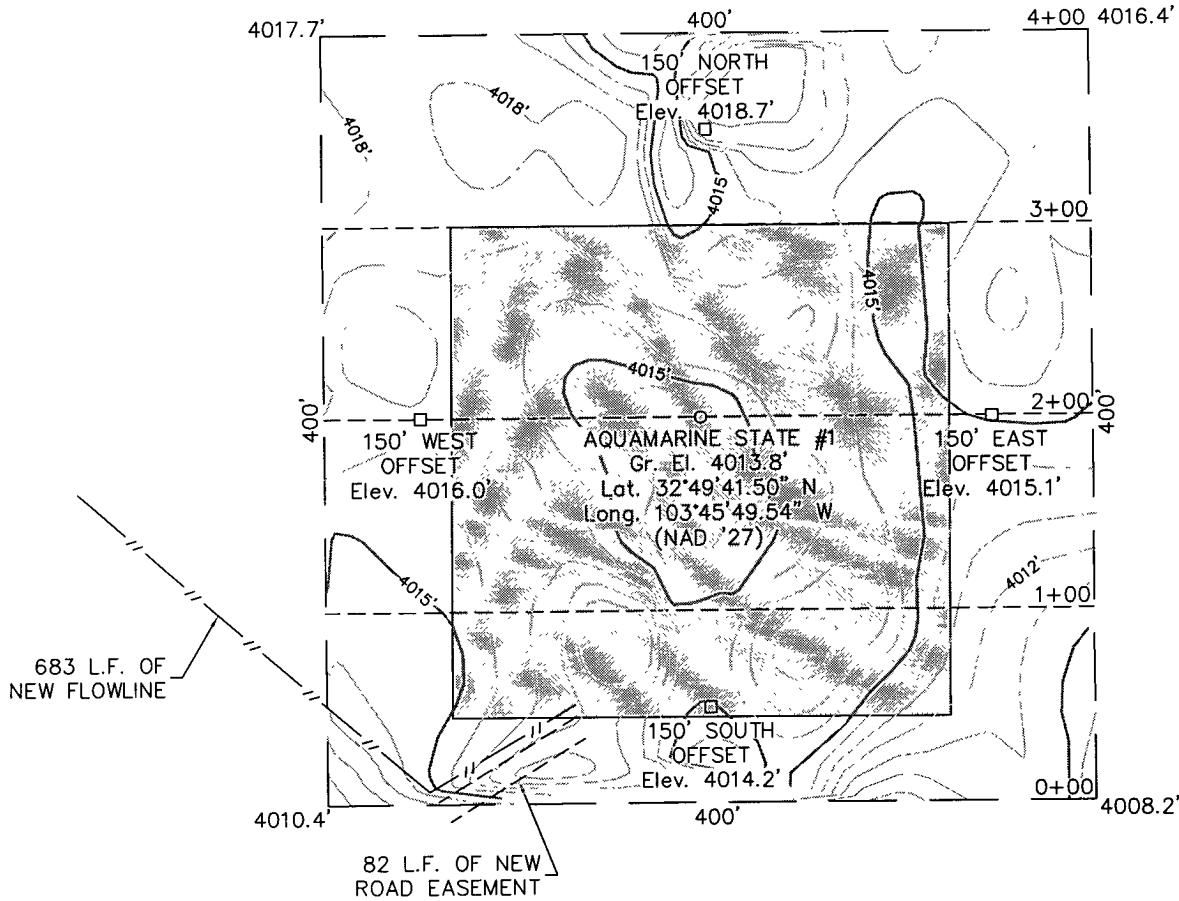
SECTION 16, TOWNSHIP 17 SOUTH, RANGE 32 EAST, N.M.P.M.

LEA COUNTY

NEW MEXICO

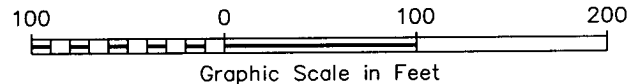
L-2010-0555-A

THIS IS NOT A BOUNDARY SURVEY
Apparent property corners and property lines, if shown,
are for information only.



DRIVING DIRECTIONS

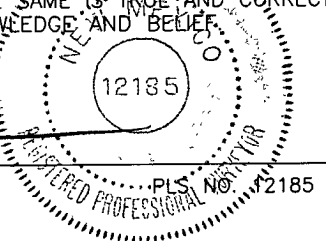
FROM THE INTERSECTION OF STATE HIGHWAY 82 AND COUNTY ROAD 126 IN MALJAMAR, NM GO SOUTH ON SAID COUNTY ROAD 126 2.0 MILES TO A LEASE ROAD ON WEST (RIGHT) SIDE OF ROAD, THEN GO WEST 0.1 MILE, THEN GO NORTHWEST (RIGHT) 0.1 MILE TO A POINT BEING APPROXIMATELY 300 FEET WEST OF THE PROPOSED LOCATION.



I HEREBY CERTIFY THAT THIS ~~PLAN~~ WAS MADE FROM AN ACTUAL SURVEY MADE BY ME OR UNDER MY DIRECT SUPERVISION AND THAT THE SAME IS TRUE AND CORRECT TO THE BEST OF MY KNOWLEDGE AND BELIEF.

[Signature]

MACON McDONALD



**WEST
COMPANY**
of Midland, Inc.

110 W. LOUISIANA, STE. 110
MIDLAND TEXAS, 79701
(432) 687-0865 - (432) 687-0868 FAX

ConocoPhillips

Topographic Map

AQUAMARINE STATE #1

Located 343' FSL & 432' FEL, Section 16
Township 17 South, Range 32 East, N.M.P.M.
Lea County, New Mexico

Drawn By: LVA	Date: July 16, 2010
Scale: 1" = 100'	Field Book: 489 / 19-20
Sheet 1 of 3	Quadrangle: Maljamar
W.O. No: 2010-0555	Dwg. No.: L-2010-0555-A

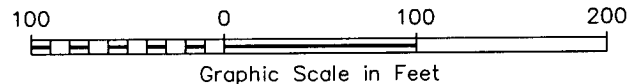
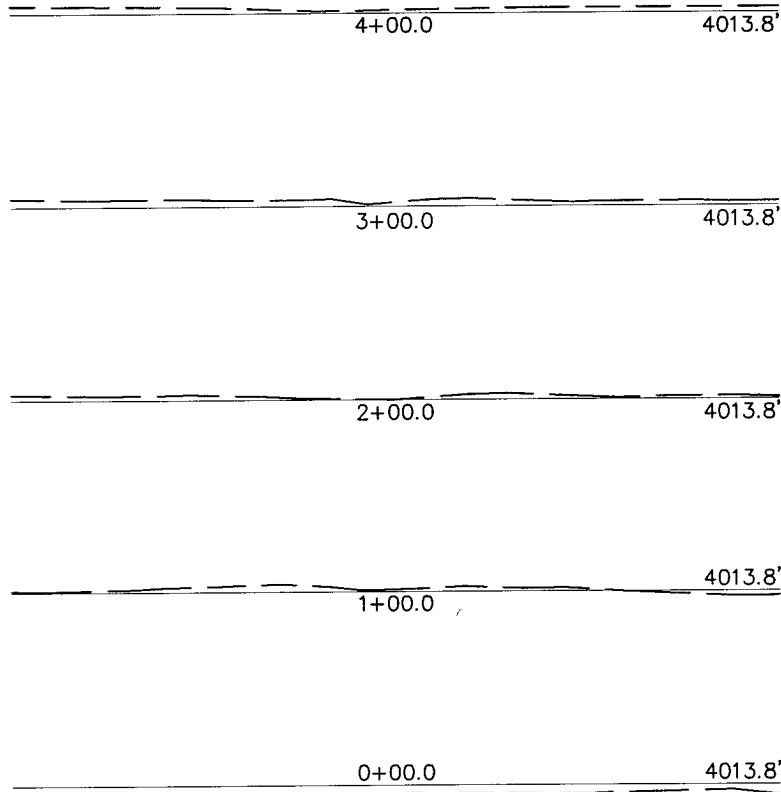
SECTION 16, TOWNSHIP 17 SOUTH, RANGE 32 EAST, N.M.P.M.

LEA COUNTY

NEW MEXICO

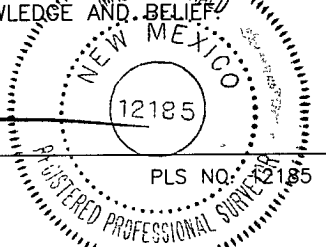
L-2010-0555-B

THIS IS NOT A BOUNDARY SURVEY
 Apparent property corners and property lines, if shown,
 are for information only.



I HEREBY CERTIFY THAT THIS PLAT WAS MADE FROM
 AN ACTUAL SURVEY MADE BY ME OR UNDER MY DIRECT
 SUPERVISION AND THAT THE SAME IS TRUE AND CORRECT
 TO THE BEST OF MY KNOWLEDGE AND BELIEF.

MACON McDONALD



PLS NO: 12185

WEST
COMPANY
 of Midland, Inc.

110 W. LOUISIANA, STE. 110
 MIDLAND TEXAS, 79701
 (432) 687-0865 - (432) 687-0868 FAX

Topographic Map

AQUAMARINE STATE #1

Located 343' FSL & 432' FEL, Section 16
 Township 17 South, Range 32 East, N.M.P.M.
 Lea County, New Mexico

Drawn By: LVA	Date: July 16, 2010
Scale: 1" = 100'	Field Book: 489 / 19-20
Sheet 2 of 3	Quadrangle: Maljamar
W.O. No: 2010-0555	Dwg. No.: L-2010-0555-B

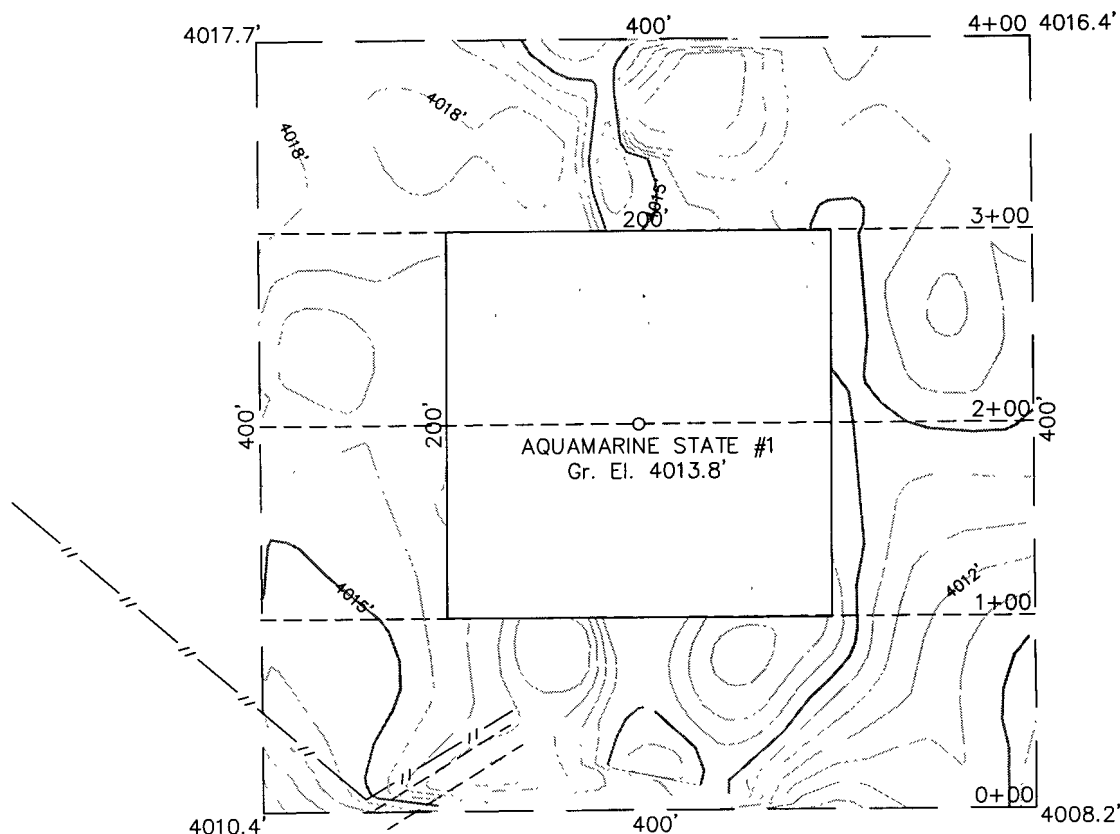
SECTION 16, TOWNSHIP 17 SOUTH, RANGE 32 EAST, N.M.P.M.

LEA COUNTY

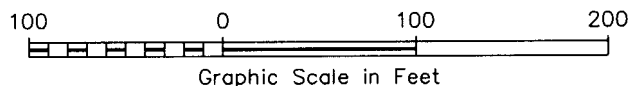
NEW MEXICO

L-2010-0555-C

THIS IS NOT A BOUNDARY SURVEY
Apparent property corners and property lines, if shown,
are for information only.



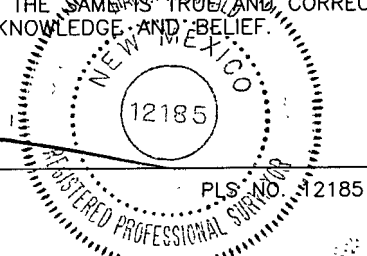
INTERIM RECLAMATION



I HEREBY CERTIFY THAT THIS PLAT WAS MADE FROM
AN ACTUAL SURVEY MADE BY ME OR UNDER MY DIRECT
SUPERVISION AND THAT THE SAME IS TRUE AND CORRECT
TO THE BEST OF MY KNOWLEDGE AND BELIEF.

[Signature]

MACON McDONALD



110 W. LOUISIANA, STE. 110
MIDLAND TEXAS, 79701
(432) 687-0865 - (432) 687-0868 FAX

ConocoPhillips

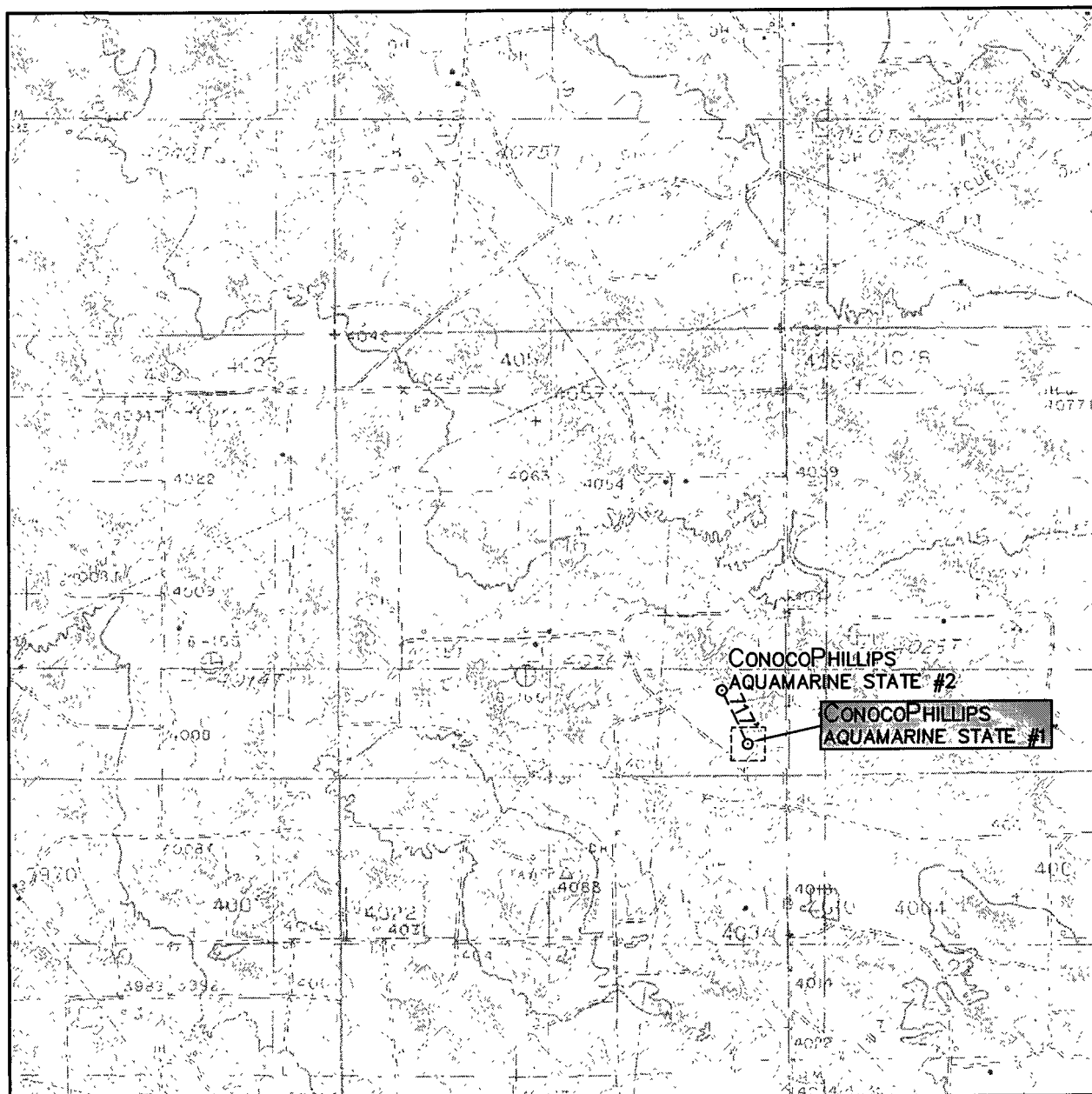
Topographic Map

AQUAMARINE STATE #1

Located 343' FSL & 432' FEL, Section 16
Township 17 South, Range 32 East, N.M.P.M.
Lea County, New Mexico

Drawn By: KHY	Date: July 16, 2010
Scale: 1" = 100'	Field Book: 489 / 19-20
Sheet 3 of 3	Quadrangle: Maljamar
W.O. No: 2010-0555	Dwg. No.: L-2010-0555-C

LOCATION VERIFICATION MAP



SCALE: 1" = 2000'

CONTOUR INTERVAL:
MALJAMAR - 5'

SEC. 16 TWP. 17-S RGE. 32-E

SURVEY N.M.P.M.

COUNTY LEA

DESCRIPTION 343' FSL & 432' FEL

ELEVATION 4014'

OPERATOR CONOCOPHILLIPS

LEASE AQUAMARINE STATE

U.S.G.S. TOPOGRAPHIC MAP
MALJAMAR



**WEST
COMPANY**
of Midland, Inc.

110 W. LOUISIANA, STE. 110
MIDLAND TEXAS, 79701
(432) 687-0865 - (432) 687-0868 FAX

Topographic map showing the proposed 683' L.F. OF NEW FLOWLINE. The map includes contour lines, spot elevations, and a grid. A rectangular box highlights the well location, with an arrow pointing to it from the text '683' L.F. OF NEW FLOWLINE'. A label 'CONOCOPHILLIPS AQUAMARINE STATE #1' is also present.

CONTOUR INTERVAL:
MALJAMAR - 5'

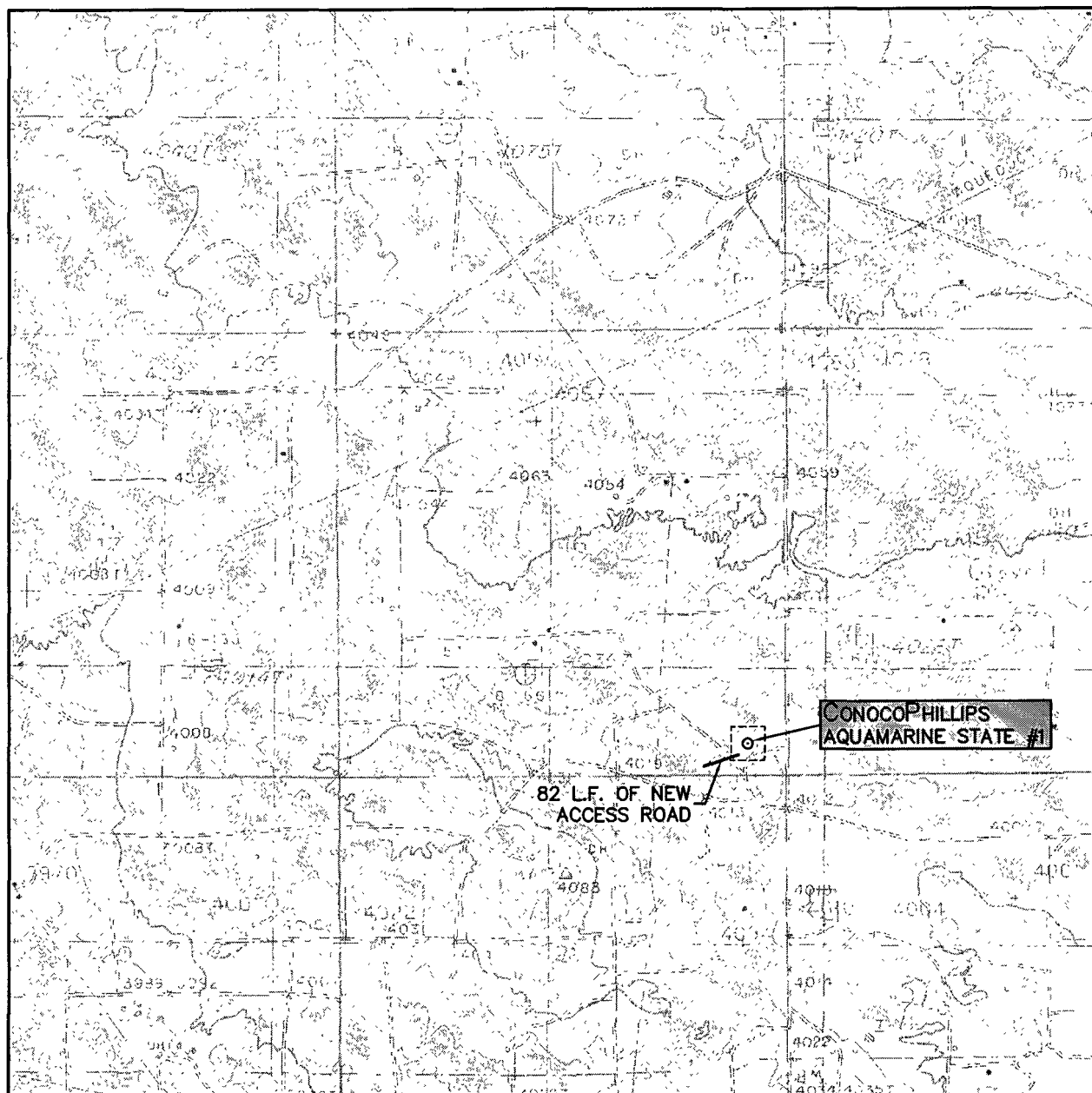
U.S.G.S. TOPOGRAPHIC MAP
MALJAMAR



**WEST
COMPANY**
of Midland, Inc.

110 W. LOUISIANA, STE. 110
MIDLAND TEXAS, 79701
(432) 687-0865 - (432) 687-0868 FAX

LOCATION VERIFICATION MAP



SCALE: 1" = 2000'

CONTOUR INTERVAL:
MALJAMAR - 5'

SEC. 16 TWP. 17-S RGE. 32-E

SURVEY N.M.P.M.

COUNTY LEA

DESCRIPTION 343' FSL & 432' FEL

ELEVATION 4014'

OPERATOR CONOCOPHILLIPS

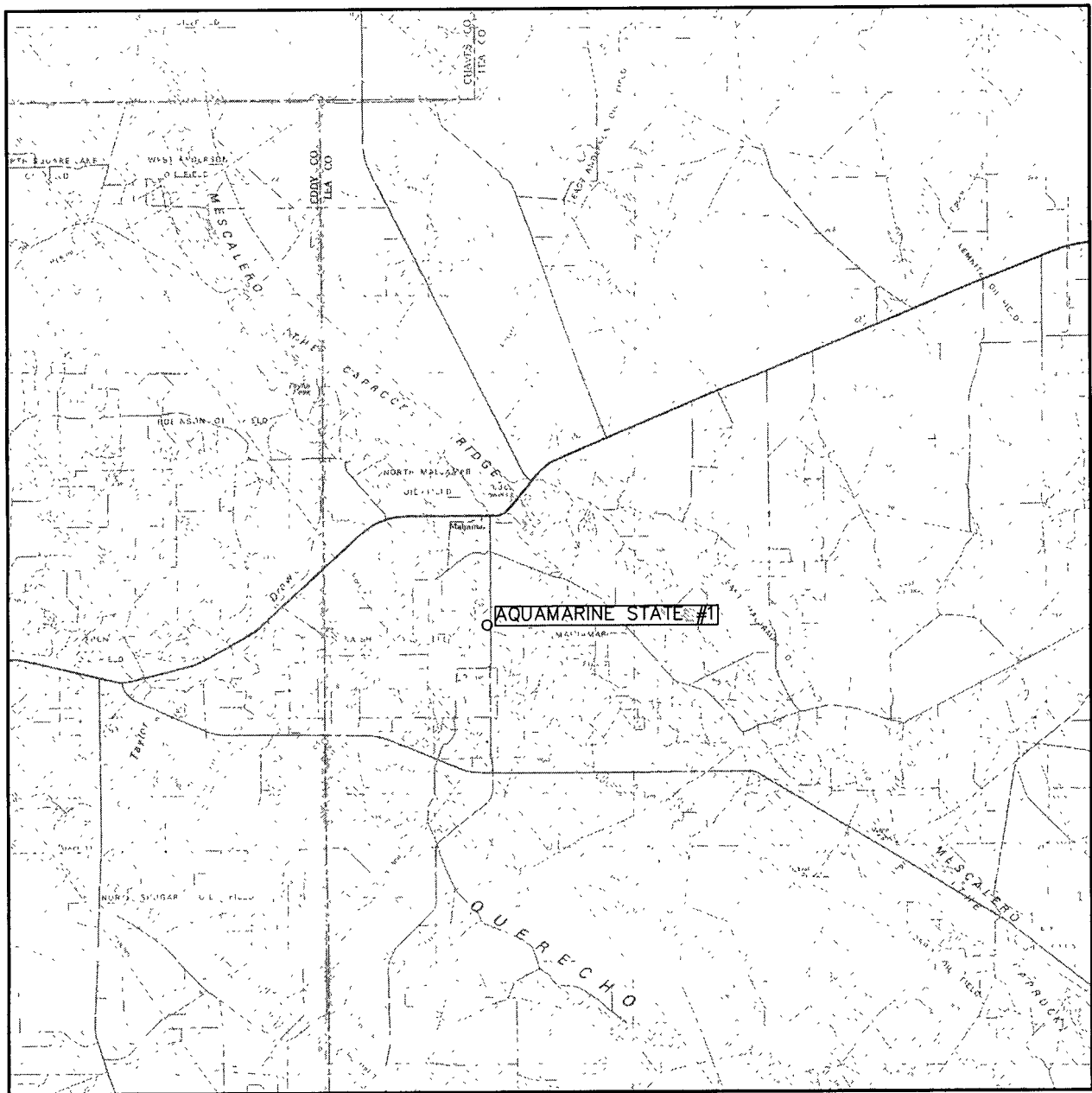
LEASE AQUAMARINE STATE

U.S.G.S. TOPOGRAPHIC MAP
MALJAMAR



110 W. LOUISIANA, STE. 110
MIDLAND TEXAS, 79701
(432) 687-0865 - (432) 687-0868 FAX

VICINITY MAP



SCALE: 1" = 3 MILES

SEC. 16 TWP. 17-S RGE. 32-E

SURVEY N.M.P.M.

COUNTY LEA

DESCRIPTION 343' FSL & 432' FEL

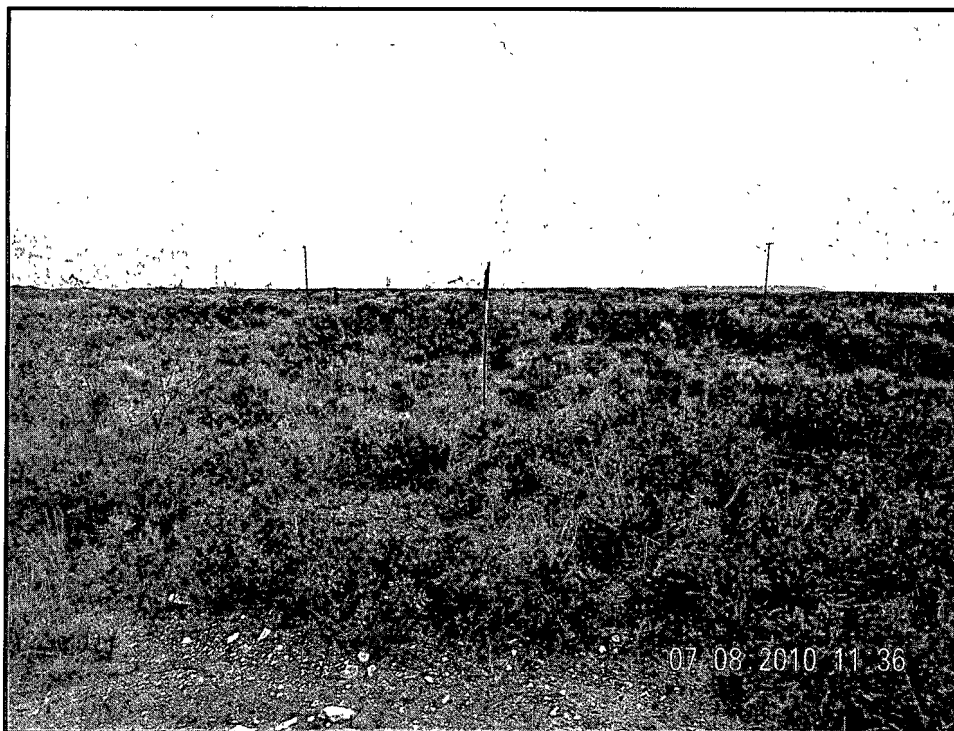
ELEVATION 4014'

OPERATOR CONOCO PHILLIPS

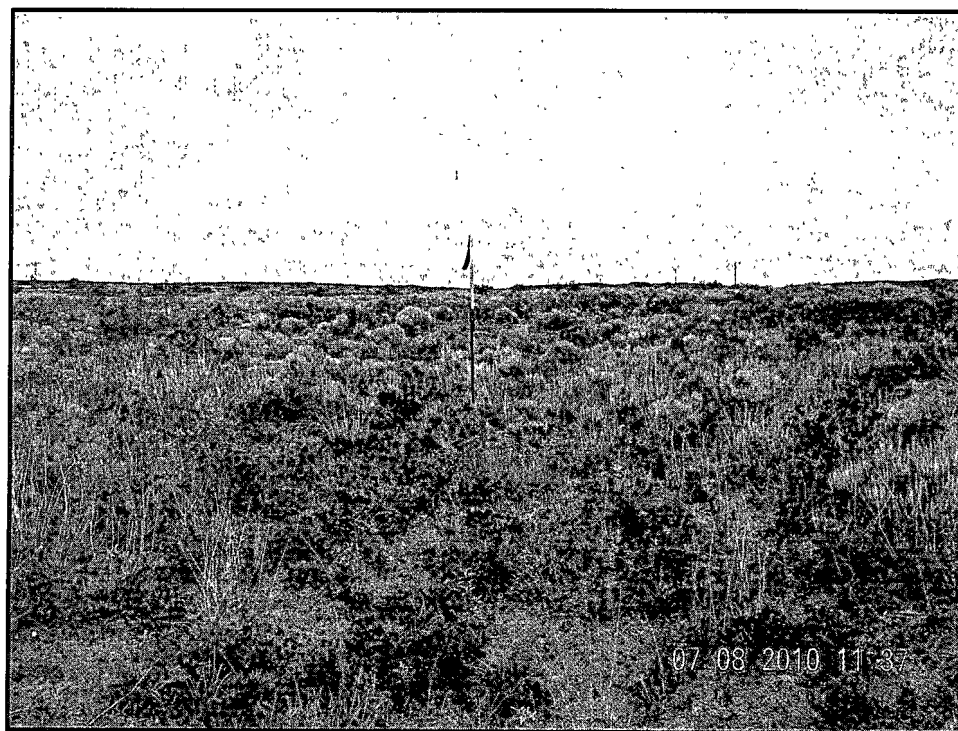
LEASE AQUAMARINE STATE



110 W. LOUISIANA, STE. 110
MIDLAND TEXAS, 79701
(432) 687-0865 - (432) 687-0868 FAX



NORTHERLY VIEW TO LOCATION STAKE



WESTERLY VIEW TO LOCATION STAKE

ConocoPhillips

AQUAMARINE STATE #1

Located 343' FSL & 432' FEL, Section 16
Township 17 South, Range 32 East, N.M.P.M.
Lea County, New Mexico



110 W. LOUISIANA, STE. 110
MIDLAND TEXAS, 79701
(432) 687-0865 - (432) 687-0868 FAX

Drawn By: KHY

Date: July 16, 2010