

RECEIVEDDISTRICT I
1625 N. FRENCH DR., HOBBS, NM 88240State of New Mexico
Energy, Minerals and Natural Resources Department

Form C-102

Revised October 12, 2005

Submit to Appropriate District Office

State Lease - 4 Copies

Fee Lease - 3 Copies

DISTRICT II
1301 W. GRAND AVENUE, ARTESIA, NM 88210

JUL 01 2010

OIL CONSERVATION DIVISION
HOBBSOCDDISTRICT III
1000 RIO BRAZOS RD., AZTEC, NM 8741011885 SOUTH ST. FRANCIS DR.
Santa Fe, New Mexico 87505DISTRICT IV
11885 S. ST. FRANCIS DR., SANTA FE, NM 87505**WELL LOCATION AND ACREAGE DEDICATION PLAT**☐ AMENDED REPORT

API Number 30-025-39648 ✓	Pool Code 33225 ✓	Pool Name HOUSE; BUNEBRY, SOUTH
Property Code 303211 ✓	Property Name BUGLER ✓	Well Number 3 ✓
OGRID No. 873 ✓	Operator Name APACHE CORPORATION ✓	Elevation 3573'

Surface Location

UL or lot No. L	Section 13	Township 20-S	Range 38-E	Lot Idn	Feet from the 2310	North/South line SOUTH	Feet from the 990	East/West line WEST	County LEA ✓
---------------------------	----------------------	-------------------------	----------------------	---------	------------------------------	----------------------------------	-----------------------------	-------------------------------	------------------------

Bottom Hole Location If Different From Surface

UL or lot No.	Section	Township	Range	Lot Idn	Feet from the	North/South line	Feet from the	East/West line	County
Dedicated Acres 40	Joint or Infill	Consolidation Code	Order No.						

NO ALLOWABLE WILL BE ASSIGNED TO THIS COMPLETION UNTIL ALL INTERESTS HAVE BEEN CONSOLIDATED
OR A NON-STANDARD UNIT HAS BEEN APPROVED BY THE DIVISION

	OPERATOR CERTIFICATION I hereby certify that the information herein is true and complete to the best of my knowledge and belief, and that this organization either owns a working interest or unleased mineral interest in the land including the proposed bottom hole location or has a right to drill this well at this location pursuant to a contract with an owner of such mineral or working interest, or to a voluntary pooling agreement or a compulsory pooling order heretofore entered by the division. Signature <u>Reesa Holland</u> Date <u>6/30/10</u> Printed Name <u>REESA HOLLAND</u>
	SURVEYOR CERTIFICATION I hereby certify that the well location shown on this plat was plotted from field notes of actual surveys made by me or under my supervision, and that the same is true and correct to the best of my belief. Date Surveyed <u>JANUARY 11 2010</u> Signature & Seal of Professional Surveyor <u>Ronald J. Eidson</u> Professional Surveyor <u>3239</u>
	GEODETIC COORDINATES NAD 27 NME SURFACE LOCATION Y=574000.9 N X=877778.5 E LAT.=32.572051° N LONG.=103.107037° W LAT.=32°34'19.38"N LONG.=103°06'25.33"W
	Certificate No. GARY G. EIDSON 12641 RONALD J. EIDSON 3239

RECEIVED

DISTRICT I
1625 N. FRENCH DR., HOBBS, NM 88240

JUL 01 2010

State of New Mexico
Energy, Minerals and Natural Resources Department

Form C-102

DISTRICT II
1301 W. GRAND AVENUE, ARTESIA, NM 88210

HOBBSOCD

OIL CONSERVATION DIVISION

Revised October 12, 2005
Submit to Appropriate District Office
State Lease - 4 Copies
Fee Lease - 3 Copies

DISTRICT III
1000 RIO BRAZOS RD., AZTEC, NM 87410

11885 SOUTH ST. FRANCIS DR.
Santa Fe, New Mexico 87505

DISTRICT IV
11885 S. ST. FRANCIS DR., SANTA FE, NM 87505

WELL LOCATION AND ACREAGE DEDICATION PLAT

☐ AMENDED REPORT

API Number 30-025-39648	Pool Code 78760	Pool Name HOUSE; TUBB
Property Code 303211	Property Name BUGLER	Well Number 3
OGRID No. 873	Operator Name APACHE CORPORATION	Elevation 3573'

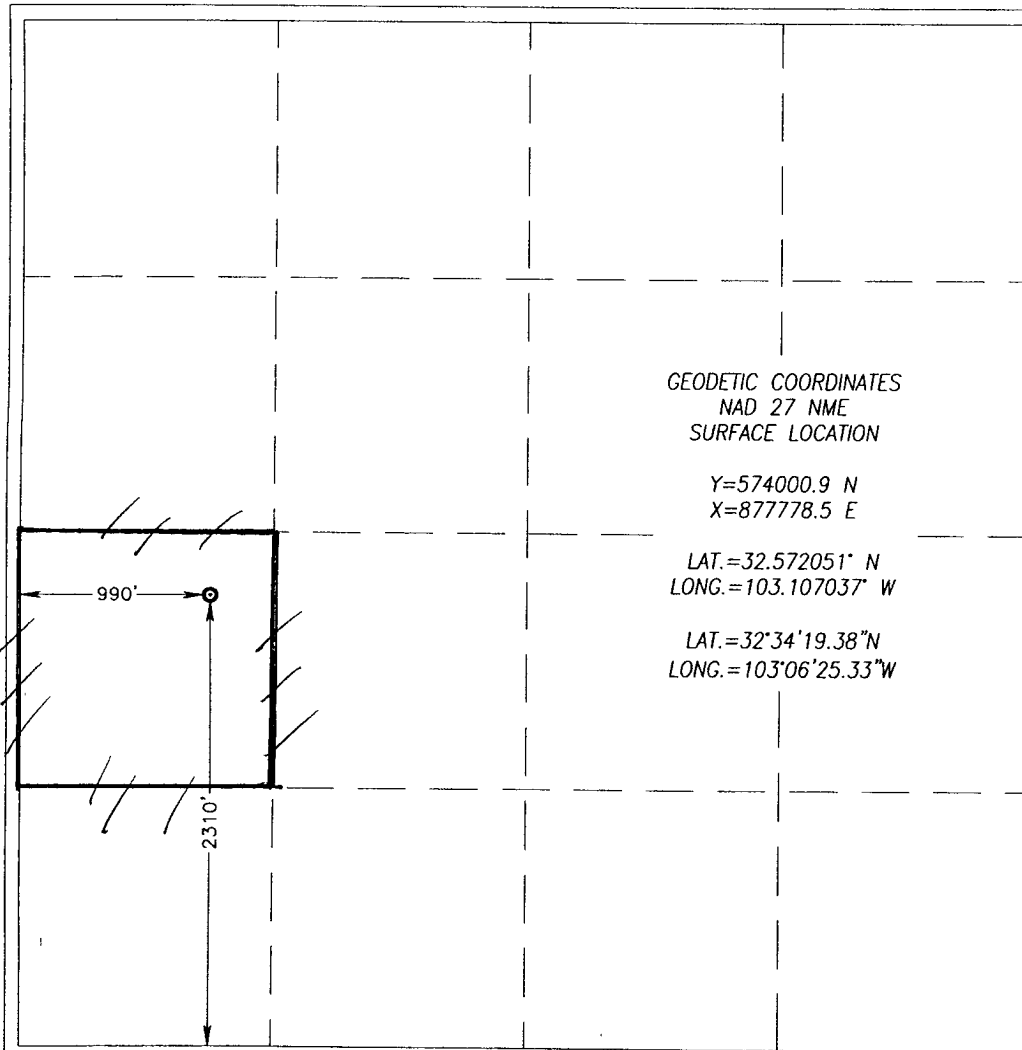
Surface Location

UL or lot No. L	Section 13	Township 20-S	Range 38-E	Lot Idn	Feet from the 2310	North/South line SOUTH	Feet from the 990	East/West line WEST	County LEA
---------------------------	----------------------	-------------------------	----------------------	---------	------------------------------	----------------------------------	-----------------------------	-------------------------------	----------------------

Bottom Hole Location If Different From Surface

UL or lot No.	Section	Township	Range	Lot Idn	Feet from the	North/South line	Feet from the	East/West line	County
Dedicated Acres 40	Joint or Infill	Consolidation Code	Order No.						

NO ALLOWABLE WILL BE ASSIGNED TO THIS COMPLETION UNTIL ALL INTERESTS HAVE BEEN CONSOLIDATED
OR A NON-STANDARD UNIT HAS BEEN APPROVED BY THE DIVISION



GEODETIC COORDINATES
NAD 27 NME
SURFACE LOCATION

Y=574000.9 N
X=877778.5 E

LAT.=32.572051° N
LONG.=103.107037° W

LAT.=32°34'19.38"N
LONG.=103°06'25.33"W

OPERATOR CERTIFICATION

I hereby certify that the information herein is true and complete to the best of my knowledge and belief, and that this organization either owns a working interest or unleased mineral interest in the land including the proposed bottom hole location or has a right to drill this well at this location pursuant to a contract with an owner of such mineral or working interest, or to a voluntary pooling agreement or a compulsory pooling order heretofore entered by the division.

Reesa Holland 6/30/10
Signature Date
REESEA HOLLAND
Printed Name

SURVEYOR CERTIFICATION

I hereby certify that the well location shown on this plat was plotted from field notes of actual surveys made by me or under my supervision, and that the same is true and correct to the best of my belief.

RONALD J. EIDSON
JANUARY 2010
NEW MEXICO
Date Surveyed
Signature & Seal of Professional Surveyor
Ronald J. Eidson 01/15/2010
10111-0001

Certificate No. GARY G. EIDSON 12841
RONALD J. EIDSON 3239

RECEIVED

DISTRICT I
1625 N. FRENCH DR., HOBBS, NM 88240

DISTRICT II
1301 W. GRAND AVENUE, ARTESIA, NM 88210

DISTRICT III
1000 RIO BRAZOS RD., AZTEC, NM 87410

DISTRICT IV
11885 S. ST. FRANCIS DR., SANTA FE, NM 87505

State of New Mexico
Energy, Minerals and Natural Resources Department

JUL 01 2010

HOBBS

CONSERVATION DIVISION
11885 SOUTH ST. FRANCIS DR.
Santa Fe, New Mexico 87505

Form C-102

Revised October 12, 2005

Submit to Appropriate District Office

State Lease - 4 Copies

Fee Lease - 3 Copies

WELL LOCATION AND ACREAGE DEDICATION PLAT

☐ AMENDED REPORT

API Number 30-025-39648'	Pool Code 33250 /	Pool Name HOUSE; DRINKARD
Property Code 303211 /	Property Name BUGLER	Well Number 3
OGRID No. 873 /	Operator Name APACHE CORPORATION /	Elevation 3573'

Surface Location

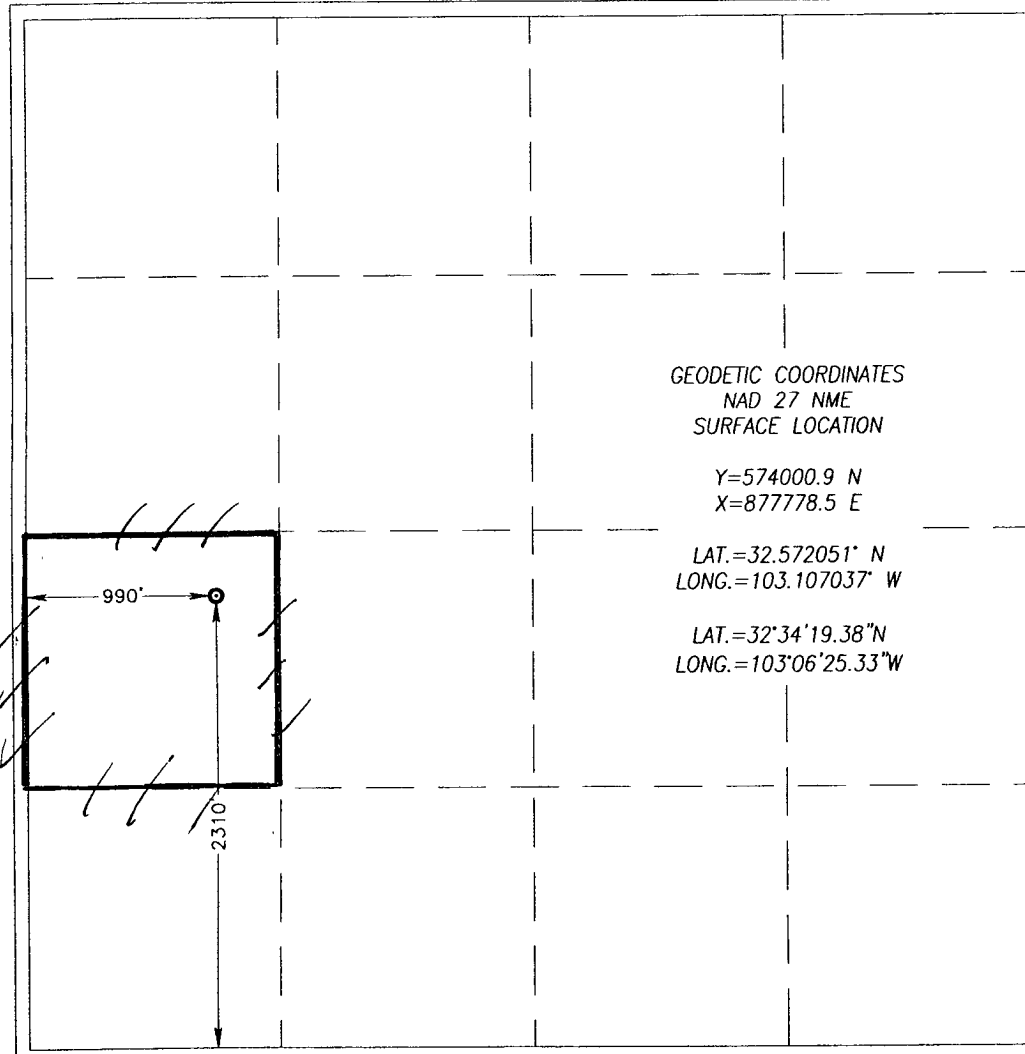
UL or lot No.	Section	Township	Range	Lot Idn	Feet from the	North/South line	Feet from the	East/West line	County
L	13	20-S	38-E		2310	SOUTH	990	WEST	LEA

Bottom Hole Location If Different From Surface

UL or lot No.	Section	Township	Range	Lot Idn	Feet from the	North/South line	Feet from the	East/West line	County

Dedicated Acres 40	Joint or Infill	Consolidation Code	Order No.
------------------------------	-----------------	--------------------	-----------

NO ALLOWABLE WILL BE ASSIGNED TO THIS COMPLETION UNTIL ALL INTERESTS HAVE BEEN CONSOLIDATED
OR A NON-STANDARD UNIT HAS BEEN APPROVED BY THE DIVISION



OPERATOR CERTIFICATION

I hereby certify that the information herein is true and complete to the best of my knowledge and belief, and that this organization either owns a working interest or unleased mineral interest in the land including the proposed bottom hole location or has a right to drill this well at this location pursuant to a contract with an owner of such mineral or working interest, or to a voluntary pooling agreement or a compulsory pooling order heretofore entered by the division.

Reesa Holland
Signature Date

REESEA HOLLAND
Printed Name

SURVEYOR CERTIFICATION

I hereby certify that the well location shown on this plat was plotted from field notes of actual surveys made by me or under my supervision, and that the same is true and correct to the best of my belief.

RONALD J. EIDSON
JANUARY 2010
Date Surveyed
Signature & Seal of Professional Surveyor
Ronald J. Eidson
10111-0001

Certificate No. **GARY G. EIDSON 12641**
RONALD J. EIDSON 3239