

30-025-3985L

Yates Petroleum Corporation

105 S. Fourth Street
Artesia, NM 88210

Hydrogen Sulfide (H₂S) Contingency Plan

For

**Continental APJ Federal #7
660' FSL and 660' FWL
Section 28, T23S-R32E
Lea County, NM
NM-77063**

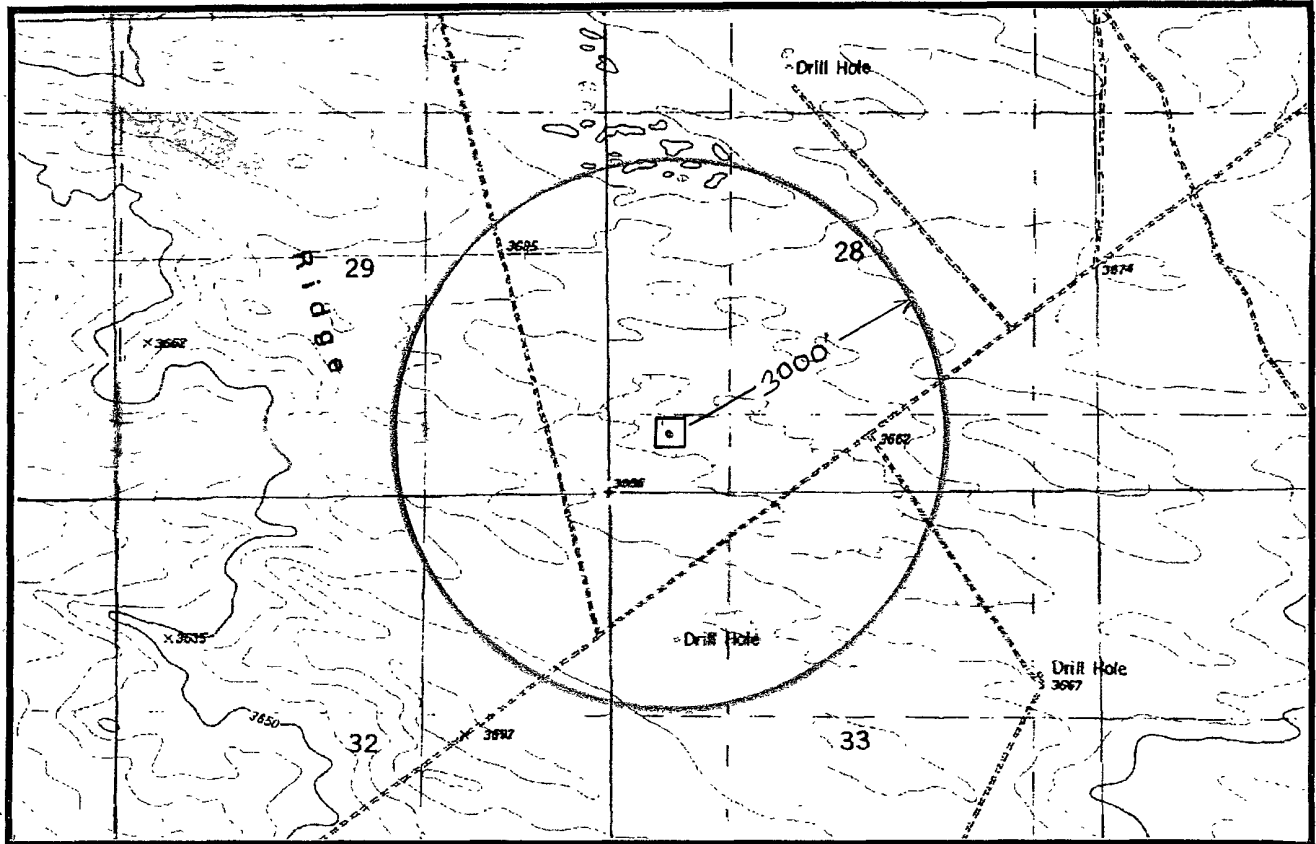
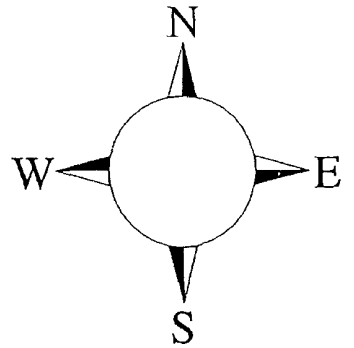
RECEIVED

JUL 22 2010

HOBBSOCD

Continental APJ Federal #7

This is an open drilling site. H₂S monitoring equipment and emergency response equipment will be used within 500' of zones known to contain H₂S, including warning signs, wind indicators and H₂S monitor.



Assumed 100 ppm ROE = 3000'

100 ppm H₂S concentration shall trigger activation of this plan.

Emergency Procedures

In the case of a release of gas containing H₂S, the first responder(s) must isolate the area and prevent entry by other persons into the 100 ppm ROE. Additionally the first responder(s) must evacuate any public places encompassed by the 100 ppm ROE. First responder(s) must take care not to injure themselves during this operation. Company and/or local officials must be contacted to aid in this operation. Evacuation of the public should be beyond the 100 ppm ROE.

All responders must have training in the detection of H₂S, measures for protection against the gas, equipment used for protection and emergency response. Additionally, responders must be equipped with H₂S monitors and air packs in order to control the release. Use the "buddy system" to ensure no injuries during the response.

Ignition of Gas Source

Should control of the well be considered lost and ignition considered, take care to protect against exposure to Sulfur Dioxide (SO₂). Intentional ignition must be coordinated with the NMOCD and local officials. Additionally the NM State Police may become involved. NM State Police shall be the Incident Command on scene of any major release. Take care to protect downwind whenever there is an ignition of the gas

Characteristics of H₂S and SO₂

Common Name	Chemical Formula	Specific Gravity	Threshold Limit	Hazardous Limit	Lethal Concentration
Hydrogen Sulfide	H ₂ S	1.189 Air = 1	10 ppm	100 ppm/hr	600 ppm
Sulfur Dioxide	SO ₂	2.21 Air = 1	2 ppm	N/A	1000 ppm

Contacting Authorities

YPC personnel must liaison with local and state agencies to ensure a proper response to a major release. Additionally, the OCD must be notified of the release as soon as possible but no later than 4 hours. Agencies will ask for information such as type and volume of release, wind direction, location of release, etc. Be prepared with all information available. The following call list of essential and potential responders has been prepared for use during a release. YPC Company response must be in coordination with the State of New Mexico's 'Hazardous Materials Emergency Response Plan' (HMER)

Yates Petroleum Corporation Phone Numbers

YPC Office	(575) 748-1471
Paul Ragsdale/Operations Manager	(575) 748-4520
Wade Bennett/Prod Superintendent	(575) 748-4236
LeeRoy Richards/Assistant Prod Superintendent	(575) 748-4228
Mike Larkin/Drilling	(575) 748-4222
Paul Hanes/Prod. Foreman/Roswell	(575) 624-2805
Tim Bussell/Drilling Superintendent	(575) 748-4221
Artesia Answering Service	(575) 748-4302
(During non-office hours)	

Agency Call List

Lea County (575)

Jal

State Police	827-7130 Eunice
City Police.....	395-2501
Sheriff's Office	395-2121
Ambulance	911
Fire Department	395-2221
NMOCD.....	393-6161 Hobbs

Hobbs

State Police	392-5588
City Police.....	397-9265
Sheriff's Office	397-9262
Ambulance	911
Fire Department	397-9308
LEPC (Local Emergency Planning Committee).....	887-3798

US Bureau of Land Management.....	887-6544 Carlsbad
New Mexico Emergency Response Commission (Santa Fe)	(505) 476-9600
24 HR	(505) 827-9126
New Mexico State Emergency Operations Center.....	(505) 476-9635
National Emergency Response Center (Washington, DC)(800) 424-8802

Other

Boots & Coots IWC	1-800-256-9688 or (281) 931-8884
Cudd Pressure Control.....	(915) 699-0139 or (915) 563-3356
Halliburton	(575) 746-2757
B. J. Services.....	(575) 746-3569

Flight For Life -4000 24th St, Lubbock, TX	(806) 743-9911
Aerocare -Rr 3 Box 49f, Lubbock, TX	(806) 747-8923
Med Flight Air Amb 2301 Yale Blvd SE #D3, Albuq, NM	(505) 842-4433
S B Air Med Svc 2505 Clark Carr Loop SE, Albuq, NM	(505) 842-4949

MULTI-POINT SURFACE USE AND OPERATIONS PLAN
Yates Petroleum Corporation
Continental APJ Federal #7
660' FSL & 660' FWL
Section 28-T23S-R32E
Lea County, New Mexico

This plan is submitted with Form 3160-3, Application for Permit to Drill, covering the above described well. The purpose of this plan is to describe the location of the proposed well, the proposed construction activities and operations plan, the magnitude of the surface disturbance involved and the procedures to be followed in rehabilitating the surface after completion of the operations, so that a complete appraisal can be made of the environmental effect associated with the operations.

1. EXISTING ROADS:

Exhibit A is a portion of the BLM map showing the well and roads in the vicinity of the proposed location. The proposed well site is located approximately 35 miles northeast of Loving, New Mexico and the access route to the location is indicated in red and green on Exhibit A.

DIRECTIONS:

Take Hwy 62/180 from intersection of 285-62/180 for approx. 2.2 miles to US Refinery Rd. Take US Refinery Rd. for approx. 12.3 miles to Potash Mines Rd. Turn left and go approx. 2.3 miles to Jay Hwy. (128). Turn right and go approx. 18.3 miles to Paduca Breaks (El Paso Pipeline). Turn left and go approx. 3.6 miles. Turn left on lease road and go approx. 0.8 of a mile. Turn left (west) and go approx. 0.2 of a mile. New access starts here, go south approx. 0.75 of a mile to the SE corner of the pad.

2. PLANNED ACCESS ROAD

- A. The proposed new access will be approximately ¹⁵⁸⁴~~3980~~ in length from the point of origin to the southwest corner of the drilling pad. The road will go southerly direction.
- B. The new road will be 14 feet in width (driving surface) and will be adequately drained to control runoff and soil erosion.
- C. The new road will be bladed with drainage on both sides. No traffic turnouts will be needed.
- D. The route of the road is visible.
- E. Existing roads will be maintained in the same or better condition.

3. LOCATION OF EXISTING WELL

- A. There is drilling activity within a one-mile radius of the well site.
- B. Exhibit D shows existing wells within a one-mile radius of the proposed Well site.

4. LOCATION OF EXISTING AND/OR PROPOSED FACILITIES

- A. There are production facilities on this lease at the present time.

- B. In the event that the well is productive, the necessary production facilities will be installed on the drilling pad. If the well is productive, a gas or diesel self-contained unit will be used to provide the necessary power until an electric line can be built, if needed.

5. LOCATION AND TYPE OF WATER SUPPLY:

- A. It is planned to drill the proposed well with a fresh water system. The fresh water will be obtained from commercial sources and will be hauled to the location by truck over the existing and proposed roads shown in Exhibit A.

6. SOURCE OF CONSTRUCTION MATERIALS:

The dirt contractor will be responsible for finding a source of material for construction of road and pad and will obtain any permits that may be required.

7. METHODS OF HANDLING WASTE DISPOSAL:

- A. A closed loop system will be used to drill this well.
- B. The closed loop system will be constructed, maintained, and closed in compliance with the State of New Mexico, Energy and Natural Resources Department, Oil Conservation Division – the “Pit Rule” 19.15.17 NMAC.
- C. Water produced during operations will be collected in tanks until hauled to an approved disposal system, or separate disposal application will be submitted.
- D. Oil produced during operations will be stored in tanks until sold.
- E. Current laws and regulations pertaining to the disposal of human waste will be complied with.
- F. All trash, junk, and other waste materials will be contained in trash cages or bins to prevent scattering and will be removed and deposited in an approved sanitary land fill. Burial on site is not approved.

8. ANCILLARY FACILITIES: None

9. WELLSITE LAYOUT:

- A. Exhibit C shows the relative location and dimensions of the well pad, the location of the drilling equipment, rig orientation and access road approach.
- B. The closed loop system will be constructed, maintained, and closed in compliance with the State of New Mexico, Energy and Natural Resources Department, Oil Conservation Division – the “Pit Rule” 19.15.17 NMAC.
- C. A 600' x 600' area has been staked and flagged.

10. PLANS FOR RESTORATION

- A. After finishing drilling and/or completion operations, all equipment and other material not needed for further operations will be removed. The location will be cleaned of all trash and junk to leave the wellsite in as aesthetically pleasing a condition as possible.

- B. If the proposed well is non-productive, all rehabilitation and/or vegetation requirements of the Bureau of Land Management will be complied with and will be accomplished as expeditiously as possible. All pits will be filled level after they have evaporated and dried.

11. SURFACE OWNERSHIP: Federal surface, Administered by the Bureau of Land Management, Carlsbad, New Mexico.

12. OTHER INFORMATION:

- A. Topography: Refer to the existing archaeological report for a description of the topography, flora, fauna, soil characteristics, dwellings, historical and cultural sites.
- B. The primary surface use is for grazing.

(Exhibits Attached)

Exhibit A	Topographic Map and Road Plat
Exhibit B	BOP Schematic
Exhibit C	Location Layout
Exhibit C-1	Closed Loop System Diagram
Exhibit D	One Mile Radius

CERTIFICATION
YATES PETROLEUM CORPORATION
Continental APJ Federal #7

I hereby certify that I or the company I represent, have inspected the drill site and access route proposed herein; that the company I represent is familiar with the conditions which currently exist; that full knowledge of state and federal laws applicable to this operation; that the statements made in this APD package are, to the best of my knowledge, true and correct; and that the work associated with the operations proposed herein will be performed in conformity with this APD package and the terms and conditions under which it is approved. I also certify that the company I represent is responsible for the operations conducted under this application. These statements are subject to the provisions of 18 U.S.C. 1001 for the filing of false statements.

Executed this 14th day of April, 2010

Printed Name Clifton May

Signature Clifton May

Position Title Land Regulatory Agent

Address 105 South Fourth Street, Artesia, NM 88210

Telephone 575-748-4347

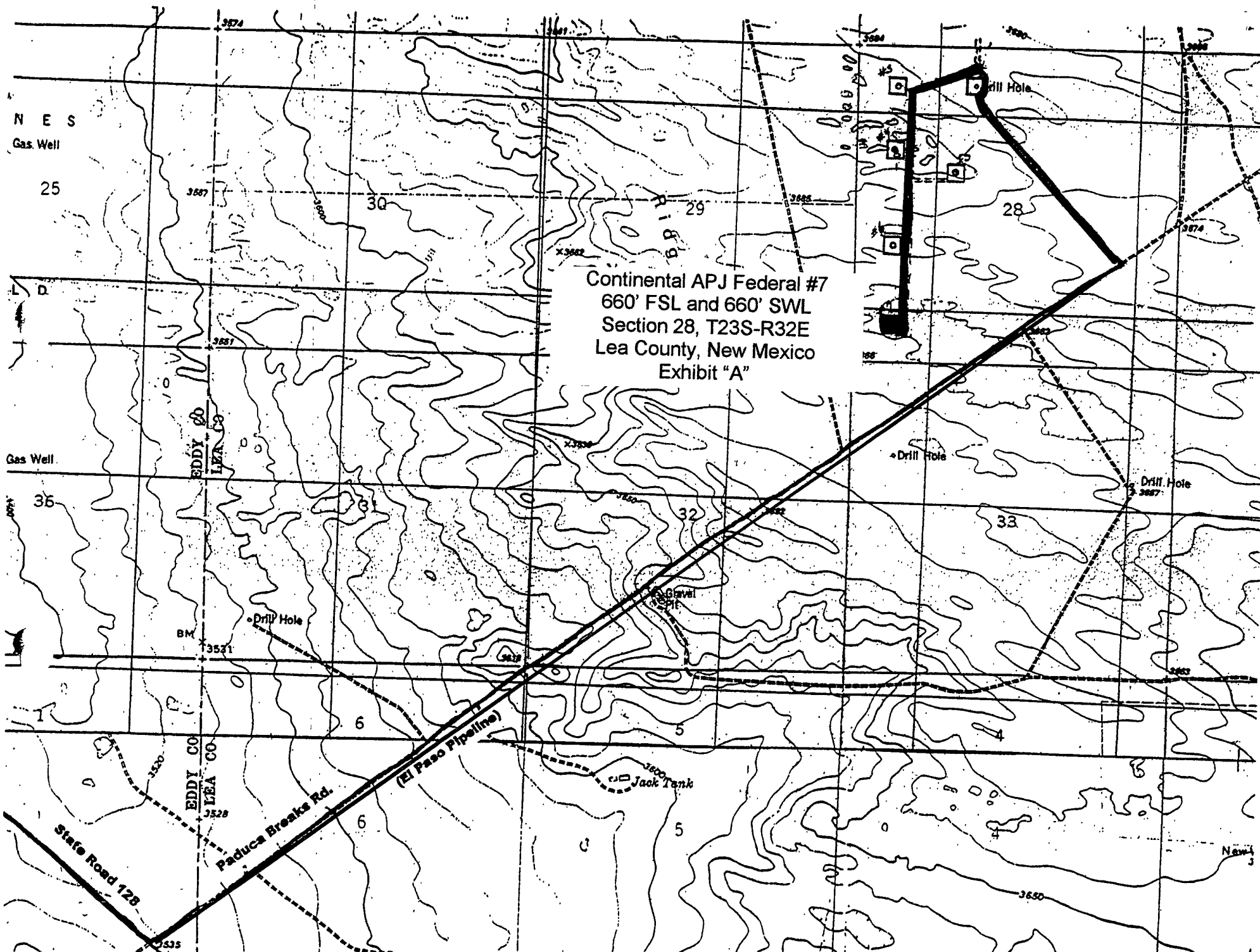
E-mail (optional) cy@yatespetroleum.com

Field Representative (if not above signatory) Tim Bussell

Address (if different from above) Same

Telephone (if different from above) 575-748-4221

E-mail (optional) _____



Continental APJ Federal #7
660' FSL and 660' SWL
Section 28, T23S-R32E
Lea County, New Mexico
Exhibit "D"

Continental APJ Federal #7
660' FSL and 660' SWL
Section 28, T23S-R32E
Lea County, New Mexico
Exhibit "D"