

DISTRICT I  
P.O. Box 1980, Hobbs, NM 88240

DISTRICT II  
P.O. Drawer DD, Artesia, NM 88210

DISTRICT III  
1000 Rio Brazos Rd., Aztec, NM 87410

## OIL CONSERVATION DIVISION

2040 Pacheco St.  
Santa Fe, NM 87505

WELL API NO. 30-025-34970
Indicate Type of Lease STATE <input type="checkbox"/> FEE <input checked="" type="checkbox"/>
State Oil & Gas Lease No. N/A
Lease Name or Unit Agreement Name Howser
Well No. 1
Pool name or Wildcat House : Blinebry

<b>SUNDRY NOTICES AND REPORTS ON WELLS</b> (DO NOT USE THIS FORM FOR PROPOSALS TO DRILL OR TO DEEPEN OR PLUG BACK TO A DIFFERENT RESERVOIR. USE "APPLICATION FOR PERMIT" (FORM C-101) FOR SUCH PROPOSALS.)	
Type of Well: OIL WELL <input checked="" type="checkbox"/> GAS WELL <input type="checkbox"/> OTHER	
Name of Operator Trilogy Operating, Inc	
Address of Operator P.O. Box 7606, Midland, Texas 79708	
Well Location Unit Letter <u>J</u> : <u>1980</u> Feet From The <u>South</u> Line and <u>1980</u> Feet From The <u>East</u> Line Section <u>1</u> Township <u>20S</u> Range <u>38E</u> NMPM <u>Lea</u> County	
Elevation (Show whether DF, RKB, RT, GR, etc.) 3484 GR	

11

Check Appropriate Box to Indicate Nature of Notice, Report, or Other Data

### NOTICE OF INTENTION TO:

PERFORM REMEDIAL WORK ☐ PLUG AND ABANDON ☒  
TEMPORARILY ABANDON ☐ CHANGE PLANS ☐  
PULL OR ALTER CASING ☐  
OTHER: **THE COMMISSION MUST BE NOTIFIED 24 HOURS PRIOR TO THE BEGINNING OF PLUGGING OPERATIONS FOR THE C-103 TO BE APPROVED.** ☐

### SUBSEQUENT REPORT OF:

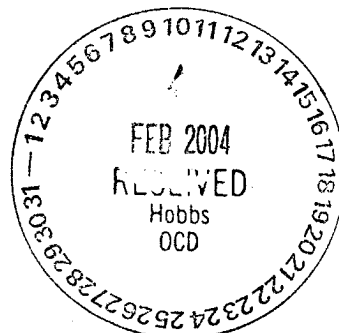
REMEDIAL WORK ☐ ALTERING CASING ☐  
COMMENCE DRILLING OPNS. ☐ PLUG AND ANBANDONMENT ☐  
CASING TEST AND CEMENT JOB ☐  
OTHER: ☐

12 Describe Proposed or Completed Operations (Clearly state all pertinent details, and give pertinent dates, including estimated date of starting any proposed work) SEE RULE 1103.

### PROPOSED PROCEDURE TO PLUG & ABANDON WELLBORE - SEE ATTACHED P & A WORKSHEET

- 1) RUWL and dump 35' of cement on top of existing CIBP @ 6300' - Set addn'l CIBP @ 6000' to cover Blinebry perfs (6042'-6083')
- 2) Dump 35' of cement on top of CIBP @ 6000'
- 3) Circulate hole w/ 9.6 ppg drilling mud
- 4) Set 50 sx cement plug @ 5670' & 4410' (covers Glorieta & San Andres Tops)
- 5) Set 50 sx cement plug @ 1600' - tag plug after 30 mins (Covers Surface casing shoe)
- 6) Set 25 sx cement plug @ 400' (Covers known fresh water in area)
- 7) Set 10 sx cement plug @ 25' to surface **→ 4 HRS.**
- 8) Install Dry Hole Marker - clean off location & return to normal landscape (seed location in spring)

NOTE: Surface csg set @ 1507' and cement was circulated to surface  
Production csg set @ 7900' and cement was circulated to surface  
Abo, Drinkard & lower Blinebry perfs are isolated w/ CIBP's from 7300', 7010' & 6300' respectively  
This is last well on lease



I hereby certify that the information above is true and complete to the best of my knowledge and belief.

SIGNATURE Michael G. Mooney TITLE Engineer DATE 12-27-2003  
TYPE OR PRINT NAME Michael G. Mooney TELEPHONE NO. 432/686-2027

(This space for State Use)

APPROVED BY Lang W. Wink TITLE OC FIELD REPRESENTATIVE II / STAFF MANAGER  
CONDITIONS OF APPROVAL, IF ANY:

# PLUGGING & ABANDONMENT WORKSHEET

(2 STRING CSNG)

OPERATOR  
LEASENAME

TRILOGY OPERATING INC  
HOUSE LEASE

SECT  
FROM  
TD:  
PBDT:

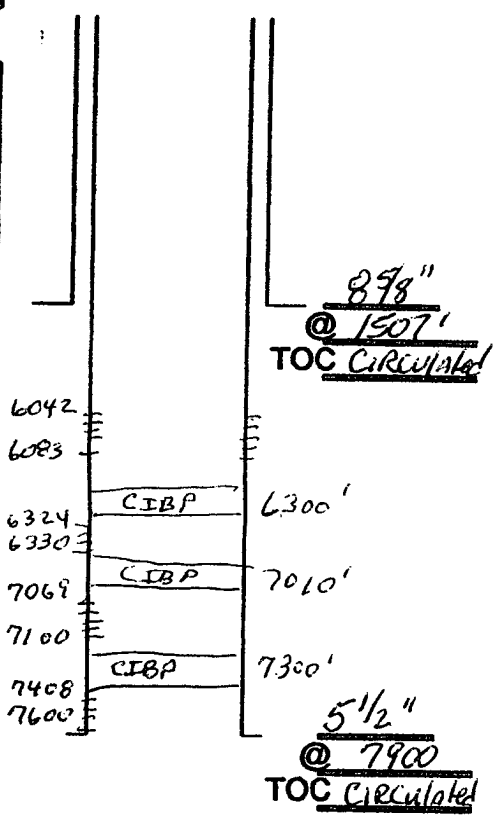
1 TWN  
1980 NSL  
7900  
6300

WELL #

205 RNG 38E

FORMATION @ TD ABO

FORMATION @ PBDT Blueberry



	SIZE	SET @	TOC	TOC DETERMINED BY	
SURFACE	8 7/8	1507	SURFACE	Circulated	
INTMED 1					
INTMED 2					
PROD	5 1/2	7900	SURFACE	Circulated	
	SIZE	TOP	BOT	TOC	DETERMINED BY
LINER 1					
LINER 2					
CUT & PULL @			TOP - BOTTOM		
INTMED 1			PERFS	-	
INTMED 2			OPENHOLE	-	
PROD					

## \*REQUIRED PLUGS DISTRICT I

RUSTLER (ANYTD)	
YATES	2873
QUEEN	
GRAYBURG	
SAN ANDRES	4360
CAPTAN REEF	
DELAWARE	
BELL CANYON	
CHERRY CANYON	
BRUSHY CANYON	
BONE SPRING	
GLOBETA	5620
BLINERY	6042
TUBB	6590
DRINKARD	7069
ABO	7200
WC	
PENN	
STRAWN	
ATOKA	
MORROW	
MISS	
DEVONIAN	

PLUG	TYPE	SACKS	DEPTH
PLUG	PLUG	CMNT	
EXAMPLES			
PLUG #1	OH	35 SXS	6400'
PLUG #2	SHOE	50 SXS	5350'-5450'
PLUG #3	CIBP/35'		4800'
PLUG #4	CIBP	25 SXS	4800'
PLUG #5	STUB	50 SXS	3600'-3700'
PLUG #6	RETNR SQZ	200 SXS	400'
PLUG #6	ST/RP	10 SXS	0-10'
PLUG #1	CIBP	10 SXS	6300
PLUG #2	CIBP	10 SXS	6000
PLUG #3	Cement	50 SXS	5370-5670
PLUG #4	Cement	50 SXS	4310-4410
PLUG #5	Cement	50 SXS	1700-1600
PLUG #6	Cement	25 SXS	400-300
PLUG #7	Cement	10 SXS	25'-Surface
PLUG #8			
PLUG #9			
PLUG #10			
PLUG #			
PLUG #			
PLUG #			
PLUG #			
PLUG #			
PLUG #			
PLUG #			
PLUG #			
PLUG #			
PLUG #			

Perfs CIBP Formation  
 7408-7600 7300' ABO  
 7069-7100 7010' Drinkard  
 6324-6330' 6300' L. Blueberry  
 Cement (35') on TOP OF  
 CIBP @ 7300' + 7010'  
 No Cement on Top of CIBP  
 @ 6300'

TD \_\_\_\_\_