

RECEIVED

AUG 23 2010

OPERATOR'S COPY

COPY

Form 3160-3  
(April 2004)

HOBBSOCD

UNITED STATES  
DEPARTMENT OF THE INTERIOR  
BUREAU OF LAND MANAGEMENT

## APPLICATION FOR PERMIT TO DRILL OR REENTER

FORM APPROVED  
OMB No. 1004-0137  
Expires March 31, 20075. Lease Serial No.  
NMNM1038806. If Indian, Allottee or Tribe Name  
N/A7. If Unit or CA Agreement, Name and No.  
N/A8. Lease Name and Well No. **(38291)**  
Cedar Point 14-L Federal No. 19. API Well No.  
**30-005-29153**10. Field and Pool, or Exploratory  
**Wildcat Cisco (96036)**11. Sec., T. R. M. or Blk and Survey or Area  
Section 14, T 15-S, R 30-E, NMPM1a. Type of work: ☒ DRILL ☐ REENTER1b. Type of Well: ☒ Oil Well ☐ Gas Well ☐ Other ☒ Single Zone ☐ Multiple Zone2. Name of Operator  
Hunt Cimarron Limited Partnership **(164726)**3a. Address P.O. Box 1592  
Roswell, New Mexico 88202-15923b. Phone No. (include area code)  
(575) 623-97994. Location of Well (Report location clearly and in accordance with any State requirements \*)  
At surface 1,980' FSL & 660' FWL, Section 14, T 15-S, R 30-E  
At proposed prod. zone Same14. Distance in miles and direction from nearest town or post office\*  
Approximately 16 miles northeast of Loco Hills, New Mexico12. County or Parish  
Chaves13. State  
NM15. Distance from proposed\*  
location to nearest  
property or lease line, ft.  
(Also to nearest drig. unit line, if any)  
660 feet16. No. of acres in lease  
960 acres17. Spacing Unit dedicated to this well  
8018. Distance from proposed location\*  
to nearest well, drilling, completed,  
applied for, on this lease, ft.  
N/A19. Proposed Depth  
9,100'20. BLM/BIA Bond No. on file  
NMB 00023521. Elevations (Show whether DF, KDB, RT, GL, etc.)  
4136' GL22. Approximate date work will start\*  
07/01/201023. Estimated duration  
30 days

## 24. Attachments

ROSWELL CONTROLLED WATER BASIN

The following, completed in accordance with the requirements of Onshore Oil and Gas Order No. 1, shall be attached to this form:

1. Well plat certified by a registered surveyor.

2. A Drilling Plan.

3. A Surface Use Plan (if the location is on National Forest System Lands, the  
SUPO shall be filed with the appropriate Forest Service Office).4. Bond to cover the operations unless covered by an existing bond on file (see  
Item 20 above).

5. Operator certification

6. Such other site specific information and/or plans as may be required by the  
authorized officer.

25. Signature

*Richard C. Gilliland*

Name (Printed/Typed)

Richard C. Gilliland

Date

02/16/2010

Title

Vice President

Approved by (Signature)

*Angel Mayes*

Name (Printed/Typed)

*Angel Mayes*

Date

2/26/2010

Title

Assistant Field Manager,  
Lands And Minerals

Office

ROSWELL FIELD OFFICE

Application approval does not warrant or certify that the applicant holds legal or equitable title to those rights in the subject lease which would entitle the applicant to  
conduct operations thereon.

Conditions of approval, if any, are attached.

APPROVED FOR 2 YEARS

Title 18 U.S.C. Section 1001 and Title 43 U.S.C. Section 1212, make it a crime for any person knowingly and willfully to make to any department or agency of the United  
States any false, fictitious or fraudulent statements or representations as to any matter within its jurisdiction.

\*(Instructions on page 2)

DECLARED WATER BASIN

APPROVAL SUBJECT TO  
GENERAL REQUIREMENTS AND  
SPECIAL STIPULATIONS ATTACHEDKZ AUG 23 2010  
PETROLEUM ENGINEERCOMMENT BEHIND THE **13 3/8"**  
CASING MUST BE **CIRCULATED.**

WITNESS

# RECEIVED

AUG 23 2010

## DISTRICT I

1625 N. FRENCH DR., HOBBS, NM 88240

## HOBBSOCD

State of New Mexico  
Energy, Minerals and Natural Resources Department

## DISTRICT II

1301 W. GRAND AVENUE, ARTESIA, NM 88210

## DISTRICT III

1000 RIO BRAZOS RD., AZTEC, NM 87410

## DISTRICT IV

11885 S. ST. FRANCIS DR., SANTA FE, NM 87505

## OIL CONSERVATION DIVISION

11885 SOUTH ST. FRANCIS DR.  
Santa Fe, New Mexico 87505

Form C-102

Revised October 12, 6605

Submit to Appropriate District Office

State Lease - 4 Copies

Fee Lease - 3 Copies

## WELL LOCATION AND ACREAGE DEDICATION PLAT

☐ AMENDED REPORT

API Number <b>30-005-29153</b>	Pool Code <b>96030</b>	Pool Name <b>Wildcat Cisco</b>
Property Code <b>38291</b>	Property Name <b>CEDAR POINT 14-L FEDERAL</b>	Well Number <b>1</b>
OGRID No. <b>164726</b>	Operator Name <b>HUNT CIMARRON LIMITED PARTNERSHIP</b>	Elevation <b>4136'</b>

### Surface Location

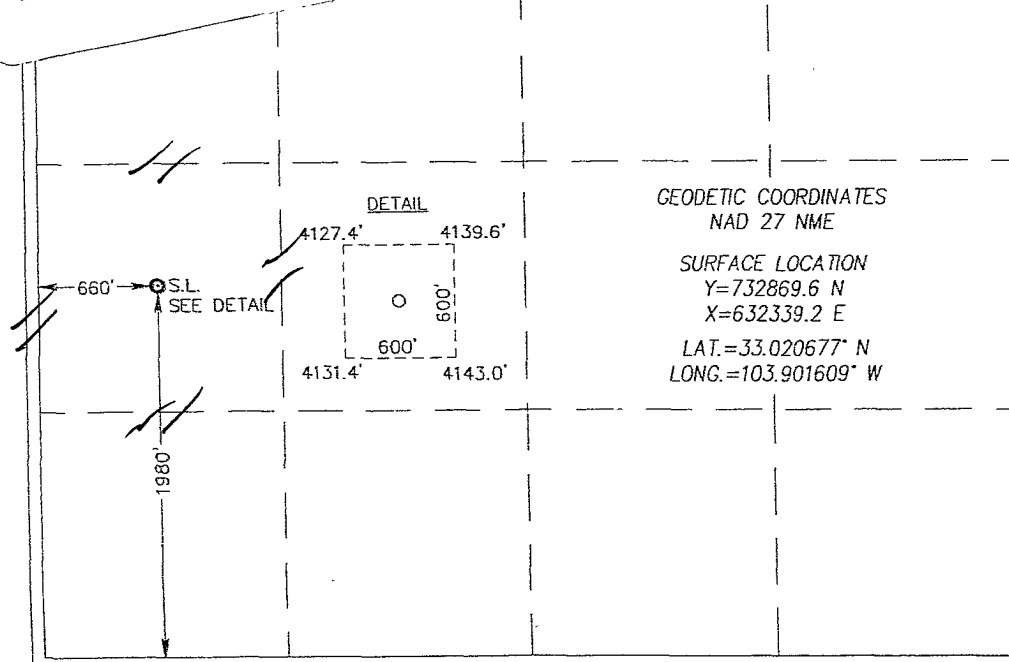
UL or lot No.	Section	Township	Range	Lot Ida	Feet from the	North/South line	Feet from the	East/West line	County
L	14	15-S	30-E		1980	SOUTH	660	WEST	CHAVES

### Bottom Hole Location If Different From Surface

UL or lot No.	Section	Township	Range	Lot Ida	Feet from the	North/South line	Feet from the	East/West line	County
Dedicated Acres <b>4.0</b>	Joint or Infill	Consolidation Code	Order No.						

NO ALLOWABLE WILL BE ASSIGNED TO THIS COMPLETION UNTIL ALL INTERESTS HAVE BEEN CONSOLIDATED  
OR A NON-STANDARD UNIT HAS BEEN APPROVED BY THE DIVISION

**OPERATOR:** Please do not report production under this temporary pool code until you have checked with the OCD District I Geologist Paul Kautz, and he confirms where your perfs are producing from and gives you the correct pool code.



### OPERATOR CERTIFICATION

I hereby certify that the information herein is true and complete to the best of my knowledge and belief, and that this organization either owns a working interest or unleased mineral interest in the land including the proposed bottom hole location or has a right to drill this well at this location pursuant to a contract with an owner of such mineral or working interest, or to a voluntary pooling agreement or a compulsory pooling order heretofore entered by the division.

*Richard C. Gilliland* 2/19/10  
Signature Date

Richard C. Gilliland  
Printed Name

### SURVEYOR CERTIFICATION

I hereby certify that the well location shown on this plat was plotted from field notes of actual surveys made by me or under my supervision, and that the same is true and correct to the best of my belief.

*GARY G. EIDSON* 2/19/10  
Date Surveyed Signature & Seal of Professional Surveyor  
DSS  
10110206

Certificate No. GARY EIDSON 12641  
RONALD J. EIDSON 3239

**SUPPLEMENT TO APPLICATION FOR PERMIT TO DRILL**  
**MULTI-POINT DRILLING PROGRAM**

HUNT CIMARRON LIMITED PARTNERSHIP  
 Cedar Point 14-L Federal No. 1  
 1,980' FSL & 660' FWL  
 Section 14, T-15-S, R-30-E  
 Chaves County, New Mexico  
 Lease No. NMNM 103880

**RECEIVED**

AUG 23 2010  
**HOBBSOCD**

In conjunction with Form 3160-3, Application for Permit to Drill, Hunt Cimarron Limited Partnership submits the following Multi-Point Drilling Program in support of the application for the referenced well and in compliance with Onshore Oil and Gas Order No. 1.

1. **Geologic Identity of Surface Formation:**

Quaternary

2. **Estimated tops of Geologic Markers:**

Rustler	805'	Glorietta	4860'
Tansill	1690'	Tubb	6080'
Yates Sand	1810'	Abo	6635'
Queen Sand	2565'	Lower Wolfcamp	8705'
Grayburg	2970'	Bough "C"	8965'
Premier Sand	3250'	Cisco	9095'
San Andres	3290'		

3. **Estimated Depth of Anticipated Water, Oil, and/or Gas:**

Water: Water sands at approx 150'  
 Oil & Gas: Possible in the Queen Sand at 2565'.  
 Oil & Gas: Possible in the San Andres at 3290'.  
 Oil & Gas: Possible in the Abo at 6635'.  
 Oil & Gas: Possible in the Bough "C" at 8965'.

4. **Proposed Casing Program:**

Hole Size	Casing Size	Weight	Grade	Thread	Depth	Cement Data
17-1/2"	13-3/8"	48#	H40	ST&C	500'	545 sx "C" - Surface
12-1/4"	8-5/8"	32 #	J & K55	LT&C	3300'	865 sx poz + 100 sx "C" - Surface.
7-7/8"	5-1/2"	17#	P110	LT&C	9100'	Stg 1: 203 sx poz + 220 sx "H". Stg 2: 352 sx poz + 150 sx "C". TOC - 3000'.

Minimum Design Safety Factors:

<u>Collapse</u>	<u>Burst</u>	<u>Tension</u>
1.125	1.125	1.800

Equivalent or better grades and weights of casing may be substituted. Additional cement may be used as appropriate.

**5. Proposed Pressure Control Equipment:**

- A. The blowout preventer equipment will consist of a minimum of a 3000# WP double-ram preventer with kill line, choke manifold, and accumulator. See Exhibit "E" for a schematic of the proposed BOP.
- B. The accumulator volume will be sufficient to provide for repeated opening & closure of preventer.
- C. The BOP and choke will be tested to 2000# prior to drilling out under the surface casing.
- D. Pipe rams will be operated once each 24-hour period and blind rams will be operated on trips.
- E. Approved close-in procedure will be posted on the rig floor.
- F. Each rig crew will hold periodic BOP drills.
- G. The hole will be kept full and volumes will be monitored on trips.

**6. Proposed Mud Program:**

Depth		Mud Type	Weight (ppg)	Viscosity (sec/1000 cc)	Fluid Loss Control
From	To				
0'	500'	Spud mud	8.4-9.4	32-34	NC
500'	3300'	Brine	10	28	NC
3300'	6700'	Brine	8.6-8.9	28	NC
6700'	9100'	Brine	8.8-9.5	30-45	<12 cc

Sufficient mud materials to maintain mud properties and meet minimum lost circulation and weight requirements will be kept at the well site at all times.

**7. Auxiliary Equipment:**

A safety valve for the drill pipe will be kept on the rig floor at all times.

**8. Testing, Logging , and Coring Program:**

- DST: No drill stem test is anticipated at this time.
- Mud Log: A 2-man mud logging unit will be on location from 2500' to TD
- Logging: Open hole logs will be run prior to running production casing. The expected suite will include GR-DLL-MSFL, FDC-CNL
- Coring: No coring is anticipated.

**9. Potential Hazards:**

No abnormal pressures or temperatures are anticipated. In the event abnormal pressures are encountered, the drilling fluid weight will be modified accordingly. No major loss circulation zones are anticipated; however, LCM will be available on the location should such conditions be encountered. Low levels of H<sub>2</sub>S may be present while drilling the well and a plan is attached to this Drilling Program. Adequate flare lines will be installed on the mud/gas separator with ignitors so that encountered gas may be safely flared. All personnel will be familiar with aspects concerning the safe operation of all equipment being used.

**10. Anticipated Starting Date:**

Work will begin as soon as possible following approval of this application and expiration of the Prairie Chicken stipulation period. Drilling operations are expected to take approximately 25-30 days. If completion is indicated, an estimated additional 20 days will be required to run production casing, complete the well, and construct necessary surface facilities.

### **Exhibit E - BOPE Schematic**

3000 psi Working Pressure  
Hunt Cimarron Limited Partnership  
Cedar Point 14-L Federal No. 1  
Section 14, T 15-S, R 30-E, NMPM  
Chaves County, NM

