

RECEIVED

State of New Mexico

Energy, Minerals and Natural Resources Department

DISTRICT I
1625 N. FRENCH DR., HOBBS, NM 88240

DISTRICT II
1301 W. GRAND AVENUE, ARTESIA, NM 88210

DISTRICT III
1000 RIO BRAZOS RD., AZTEC, NM 87410

DISTRICT IV
11885 S. ST. FRANCIS DR., SANTA FE, NM 87505

SEP 07 2010

OIL CONSERVATION DIVISION
HOBBSOCD 11885 SOUTH ST. FRANCIS DR.
Santa Fe, New Mexico 87505

Form C-102

Revised October 12, 2005

Submit to Appropriate District Office

State Lease - 4 Copies

Fee Lease - 3 Copies

WELL LOCATION AND ACREAGE DEDICATION PLAT

AMENDED REPORT

API Number 30-025-39715	Pool Code 6660	Pool Name BLUEBRY OIL + GAS (OIL)
Property Code 26470	Property Name H. CORRIGAN	Well Number 22
OGRID No. 873	Operator Name APACHE CORPORATION	Elevation 3448'

Surface Location

UL or lot No.	Section	Township	Range	Lot Idn	Feet from the	North/South line	Feet from the	East/West line	County
H	4	22-S	37-E		1550	NORTH	1280	EAST	LEA

Bottom Hole Location If Different From Surface

UL or lot No.	Section	Township	Range	Lot Idn	Feet from the	North/South line	Feet from the	East/West line	County
1	4	22-S	37-E		1209	NORTH	1313	EAST	LEA

Dedicated Acres 40	Joint or Infill	Consolidation Code	Order No.
-----------------------	-----------------	--------------------	-----------

NO ALLOWABLE WILL BE ASSIGNED TO THIS COMPLETION UNTIL ALL INTERESTS HAVE BEEN CONSOLIDATED OR A NON-STANDARD UNIT HAS BEEN APPROVED BY THE DIVISION

LOT 4 39.91 AC	LOT 3 39.86 AC	LOT 2 39.80 AC	LOT 1 39.75 AC	<p>OPERATOR CERTIFICATION</p> <p>I hereby certify that the information herein is true and complete to the best of my knowledge and belief, and that this organization either owns a working interest or unleased mineral interest in the land including the proposed bottom hole location or has a right to drill this well at this location pursuant to a contract with an owner of such mineral or working interest, or to a voluntary pooling agreement or a compulsory pooling order heretofore entered by the division.</p> <p><i>Reesa Holland</i> 7/26/10 Signature Date REESEA HOLLAND Printed Name</p>
<p>GEODETIC COORDINATES NAD 27 NME SURFACE LOCATION Y=519846.4 N X=861082.5 E</p> <p>LAT.=32.423736° N LONG.=103.163152° W</p> <p>LAT.=32°25'25.45" N LONG.=103°09'47.35" W</p> <p>BOTTOM HOLE LOCATION Y=520110.8 N X=861052.2 E</p>				

RECEIVED

SEP 07 2010

HOBBSOCD

DISTRICT I
1625 N. FRENCH DR., HOBBS, NM 88240

DISTRICT II
1301 W. GRAND AVENUE, ARTESIA, NM 88210

DISTRICT III
1000 RIO BRAZOS RD., AZTEC, NM 87410

DISTRICT IV
11885 S. ST. FRANCIS DR., SANTA FE, NM 87505

State of New Mexico
Energy, Minerals and Natural Resources Department

OIL CONSERVATION DIVISION
11885 SOUTH ST. FRANCIS DR.
Santa Fe, New Mexico 87505

Form C-102
Revised October 12, 2005
Submit to Appropriate District Office
State Lease - 4 Copies
Fee Lease - 3 Copies

WELL LOCATION AND ACREAGE DEDICATION PLAT

AMENDED REPORT

API Number 30-025-39715	Pool Code 60240	Pool Name TUBB OIL + GAS (OIL)
Property Code 26470	Property Name H. CORRIGAN	Well Number 22
OGRID No. 873	Operator Name APACHE CORPORATION	Elevation 3448'

Surface Location

UL or lot No.	Section	Township	Range	Lot Idn	Feet from the	North/South line	Feet from the	East/West line	County
H	4	22-S	37-E		1550	NORTH	1280	EAST	LEA

Bottom Hole Location If Different From Surface

UL or lot No.	Section	Township	Range	Lot Idn	Feet from the	North/South line	Feet from the	East/West line	County
1	4	22-S	37-E		1209	NORTH	1313	EAST	LEA

Dedicated Acres 40	Joint or Infill	Consolidation Code	Order No.
-----------------------	-----------------	--------------------	-----------

NO ALLOWABLE WILL BE ASSIGNED TO THIS COMPLETION UNTIL ALL INTERESTS HAVE BEEN CONSOLIDATED OR A NON-STANDARD UNIT HAS BEEN APPROVED BY THE DIVISION

LOT 4 39.91 AC	LOT 3 39.86 AC	LOT 2 39.80 AC	LOT 1 39.75 AC		<p>OPERATOR CERTIFICATION</p> <p>I hereby certify that the information herein is true and complete to the best of my knowledge and belief, and that this organization either owns a working interest or unleased mineral interest in the land including the proposed bottom hole location or has a right to drill this well at this location pursuant to a contract with an owner of such mineral or working interest, or to a voluntary pooling agreement or a compulsory pooling order heretofore entered by the division.</p> <p>Reesa Holland 7/26/10 Signature Date</p> <p>REESA HOLLAND Printed Name</p>
<p>GR. AZ. = 353°36'47" HORZ. DIST. = 266.4'</p>					<p>SURVEYOR CERTIFICATION</p> <p>I hereby certify that the well location shown on this plat was plotted from field notes of actual surveys made by me or under my supervision, and that the same is true and correct to the best of my belief.</p> <p>MARCH 11 2010 Date Surveyed Signature & Seal of Professional Surveyor Professional Surveyor 12641 10 13.0294 Certificate No. 12641 RONALD V. EIDSON 3239</p>
<p>GEODETIC COORDINATES NAD 27 NME SURFACE LOCATION Y=519846.4 N X=861082.5 E</p> <p>LAT.=32.423736° N LONG.=103.163152° W</p> <p>LAT.=32°25'25.45" N LONG.=103°09'47.35" W</p> <p>BOTTOM HOLE LOCATION Y=520110.8 N X=861052.2 E</p>					

IF

DISTRICT I
1625 N. FRENCH DR., HOBBS, NM 88240

RECEIVED

State of New Mexico
Energy, Minerals and Natural Resources Department

Form C-102

DISTRICT II
1301 W. GRAND AVENUE, ARTESIA, NM 88210

SEP 07 2010

OIL CONSERVATION DIVISION

Revised October 12, 2005
Submit to Appropriate District Office
State Lease - 4 Copies
Fee Lease - 3 Copies

DISTRICT III
1000 RIO BRAZOS RD., AZTEC, NM 87410

HOBBSOCD

11885 SOUTH ST. FRANCIS DR.
Santa Fe, New Mexico 87505

DISTRICT IV
11885 S. ST. FRANCIS DR., SANTA FE, NM 87505

WELL LOCATION AND ACREAGE DEDICATION PLAT

AMENDED REPORT

API Number 30-025-39715	Pool Code 19190	Pool Name DRINKARD
Property Code 26470	Property Name H. CORRIGAN	Well Number 22
OGRID No. 873	Operator Name APACHE CORPORATION	Elevation 5148'

Surface Location

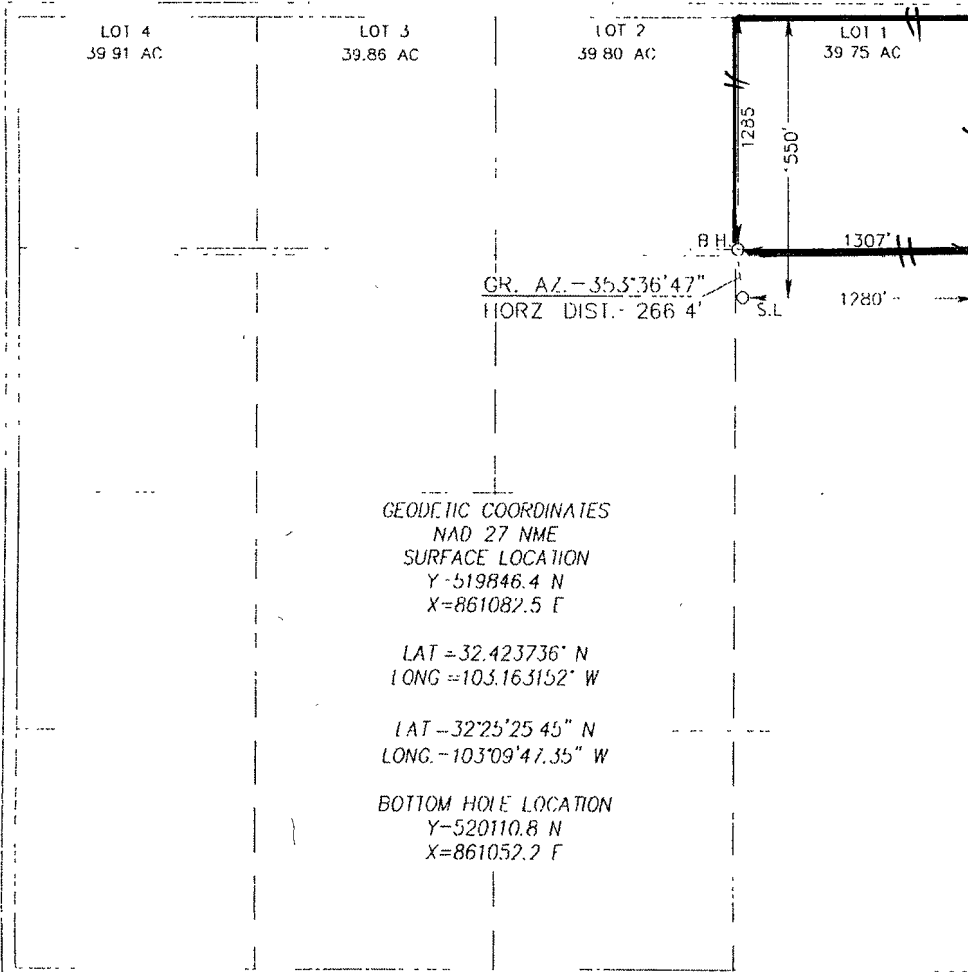
UL or lot No.	Section	Township	Range	Lot Idn	Feet from the	North/South line	Feet from the	East/West line	County
11	4	22 S	37-E		1550	NORTH	1280	EAST	LEA

Bottom Hole Location If Different From Surface

UL or lot No	Section	Township	Range	Lot Idn	Feet from the	North/South line	Feet from the	East/West line	County
1	4	22-S	37-E		1285	NORTH	1307	EAST	LEA

Dedicated Acres 40	Joint or Infill	Consolidation Code	Order No.
------------------------------	-----------------	--------------------	-----------

NO ALLOWABLE WILL BE ASSIGNED TO THIS COMPLETION UNTIL ALL INTERESTS HAVE BEEN CONSOLIDATED OR A NON-STANDARD UNIT HAS BEEN APPROVED BY THE DIVISION



OPERATOR CERTIFICATION

I hereby certify that the information herein is true and complete to the best of my knowledge and belief, and that this organization either owns a working interest or unleased mineral interest in the land including the proposed bottom hole location or has a right to drill this well at this location pursuant to a contract with an owner of such mineral or working interest, or to a voluntary pooling agreement or a compulsory pooling order heretofore entered by the division.

Reesa Holland 8/31/10
Signature Date

REESA HOLLAND
Printed Name

SURVEYOR CERTIFICATION

I hereby certify that the well location shown on this plat was plotted from field notes of actual surveys made by me or under my supervision, and that the same is true and correct to the best of my belief.

MARCH 3, 2010
Date Surveyed
Signature & Seal of Professional Surveyor

Gary Edson 3/31/10
Certificate No. 12641
RONALD J. EDSON 3239

GEODETIC COORDINATES
NAD 27 NME
SURFACE LOCATION
Y=519846.4 N
X=861082.5 E

LAT = 32.423736° N
LONG = 103.163152° W

LAT = 32° 25' 25.45" N
LONG = 103° 09' 47.35" W

BOTTOM HOLE LOCATION
Y=520110.8 N
X=861052.2 E

RECEIVED

DISTRICT I
1625 N. FRENCH DR., HOBBS, NM 88240

SEP 07 2010

State of New Mexico
Energy, Minerals and Natural Resources Department

Form C-102

DISTRICT II
1301 W. GRAND AVENUE, ARTESIA, NM 88210

HOBBSOCD

OIL CONSERVATION DIVISION

Revised October 12, 2005
Submit to Appropriate District Office
State Lease - 4 Copies
Fee Lease - 3 Copies

DISTRICT III
1000 RIO BRAZOS RD., AZTEC, NM 87410

11885 SOUTH ST. FRANCIS DR.
Santa Fe, New Mexico 87505

DISTRICT IV
11885 S. ST. FRANCIS DR., SANTA FE, NM 87505

WELL LOCATION AND ACREAGE DEDICATION PLAT

AMENDED REPORT

API Number 30-025-39715	Pool Code 62700	Pool Name WANTZ; ABO
Property Code 26470	Property Name H. CORRIGAN	Well Number 22
OGRID No. 873	Operator Name APACHE CORPORATION	Elevation 5448'

Surface Location

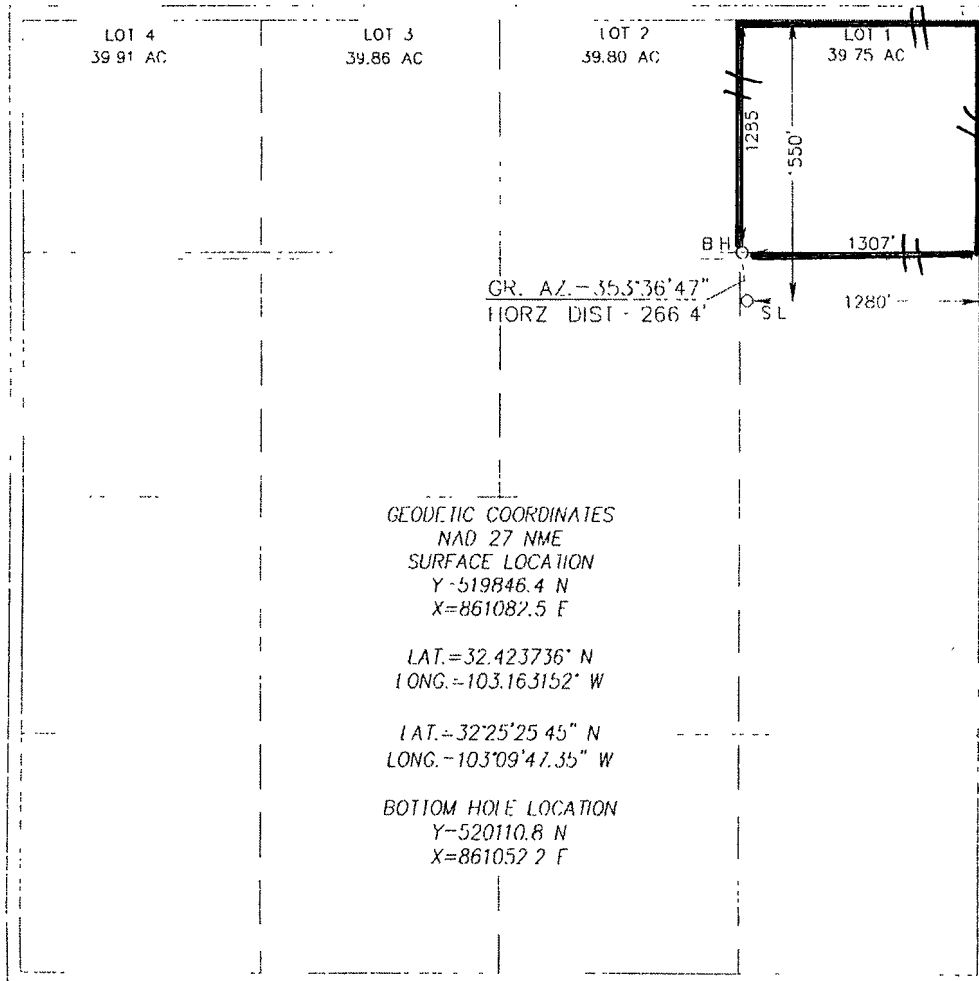
UI or lot No	Section	Township	Range	Lot Idn	Feet from the	North/South line	Feet from the	East/West line	County
H	4	22 S	37-E		1550	NORTH	1280	EAST	LEA

Bottom Hole Location If Different From Surface

UL or lot No	Section	Township	Range	Lot Idn	Feet from the	North/South line	Feet from the	East/West line	County
1	4	22-S	37-E		1285	NORTH	1307	EAST	LEA

Dedicated Acres	Joint or Infill	Consolidation Code	Order No
40			

NO ALLOWABLE WILL BE ASSIGNED TO THIS COMPLETION UNTIL ALL INTERESTS HAVE BEEN CONSOLIDATED OR A NON-STANDARD UNIT HAS BEEN APPROVED BY THE DIVISION



OPERATOR CERTIFICATION

I hereby certify that the information herein is true and complete to the best of my knowledge and belief, and that this organization either owns a working interest or unleased mineral interest in the land including the proposed bottom hole location or has a right to drill this well at this location pursuant to a contract with an owner of such mineral or working interest, or to a voluntary pooling agreement or a compulsory pooling order heretofore entered by the division.

Reesa Holland 8/31/10
Signature Date

REESEA HOLLAND
Printed Name

SURVEYOR CERTIFICATION

I hereby certify that the well location shown on this plat was plotted from field notes of actual surveys made by me or under my supervision, and that the same is true and correct to the best of my belief.

MARCH 3, 2010
Date Surveyed DSS

Signature & Seal of Professional Surveyor

Gary Edson 3/3/10
12641
10-13-0294

Certificate No. **GARY EDSON** 12641
RAYMOND J. EDSON 3739