

DISTRICT I  
1625 N. French Dr., Hobbs, NM 88240  
DISTRICT II  
1301 W. Grand Ave., Artesia, NM 88210  
DISTRICT III  
1000 Rio Brazos Rd., Aztec, NM 87410  
DISTRICT IV  
1220 St. Francis Dr., Santa Fe, NM 87505

State of New Mexico  
Energy, Minerals and Natural Resources Department  
OIL CONSERVATION DIVISION  
1220 South St. Francis Drive  
Santa Fe, NM 87505

Form C-102  
Revised October 12, 2005  
Submit to Appropriate District Office  
State Lease-4 copies  
Fee Lease-3 copies

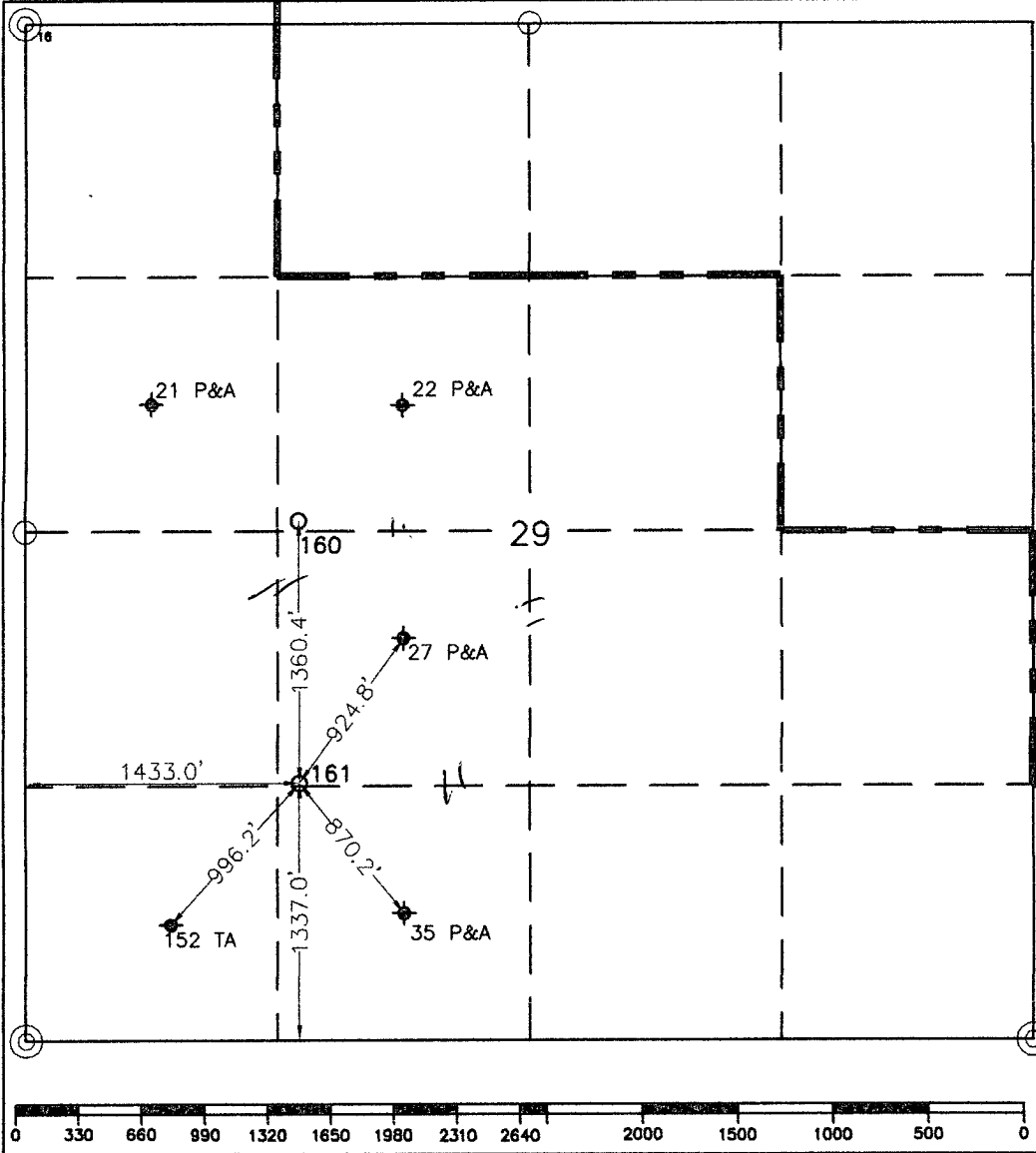
RECEIVED  
SEP 10 2010  
HOBBSOCD

AMENDED REPORT

WELL LOCATION AND ACREAGE DEDICATION PLAT

1 API Number 3D-D25-39898		2 Pool Code 18830		3 Pool Name Dollarhide Suble Drinkard					
4 Property Code 30023		5 Property Name WEST DOLLARHIDE DRINKARD UNIT			6 Well Number 161				
7 OGRID No. 4323		8 Operator Name CHEVRON USA, INC.			9 Elevation 3123'				
10 Surface Location									
UL or lot no K	Section 29	Township 24-S	Range 38-E	Lot Idn	Feet from the 1337.0'	North/South line South	Feet from the 1433.0'	East/West line West	County Lea
11 Bottom Hole Location If Different From Surface									
UL or lot no	Section	Township	Range	Lot Idn	Feet from the	North/South line	Feet from the	East/West line	County
12 Dedicated Acres 40		13 Joint or Infill		14 Consolidation Code		15 Order No			

NO ALLOWABLE WILL BE ASSIGNED TO THIS COMPLETION UNTIL ALL INTERESTS HAVE BEEN CONSOLIDATED  
OR A NON-STANDARD UNIT HAS BEEN APPROVED BY THE DIVISION.



17 OPERATOR CERTIFICATION  
I hereby certify that the information contained herein is true and complete to the best of my knowledge and belief, and that this organization either owns a working interest or unleased mineral interest in the land including the proposed bottom hole location or has a right to drill this well at this location pursuant to a contract with an owner of such a mineral or working interest or to a voluntary pooling agreement or a compulsory pooling order heretofore entered by the division

Signature: Denise Pinkerton Date: 9-9-10  
Printed Name: Denise Pinkerton

18 SURVEYOR CERTIFICATION  
I hereby certify that the well location shown on this plat was plotted from field notes of actual surveys made by me or under my supervision, and that the same is true and correct to the best of my knowledge and belief

8/29/10  
Date of Survey

Signature & Seal of Professional Surveyor: [Signature]

Certificate No. 7254

○ = Staked Location ● = Producing Well ● = Injection Well ○ = Water Supply Well ● = Plugged & Abandon Well  
⊙ = Found Section Corner, 2 or 3" Iron Pipe & GLO B.C. ○ = Found /4 Section Corner, 1" Iron Pipe & GLO B.C.

ADDITIONAL INFORMATION ON THE LOCATION

State Plane Coordinates			
Northing 433185.94 (1927NAD = 433129.58)		Easting 927100.32 (1927NAD = 885912.63)	
Latitude 32°11'05.132"		Longitude 103°05'11.131"	
Zone	North American Datum	Combined Grid Factor	Coordinate File
East	1983/CORS 96	0.9999337	W_Dollarhide_Drinkard83e
Drawing File		Field Book	
W_Dollarhide_Drinkard83e.Dwg		See 8x14" Calc. Sheet	