

DISTRICT I
1625 N FRENCH DR., HOBBS, NM 88240

State of New Mexico
Energy, Minerals and Natural Resources Department

DISTRICT II
1301 W GRAND AVENUE, ARTESIA, NM 88210

DISTRICT III
1000 Rio Brazos Rd., Aztec, NM 87410

OIL CONSERVATION DIVISION
1220 SOUTH ST. FRANCIS DR.
Santa Fe, New Mexico 87505

Form C-1
Revised October 12, 20
Submit to Appropriate District Office
State Lease - 4 Copies
Fee Lease - 3 Copies

DISTRICT IV
1220 S ST FRANCIS DR., SANTA FE, NM 87505

WELL LOCATION AND ACREAGE DEDICATION PLAT

☐ AMENDED REPORT

API Number 30-025-39900	Pool Code 47080; 46990; 46040 96764; 63840	Pool Name Monument; paddock - Monument; Blirebry - Monument Monument; ABO, SE - Weir; Drinkard
Property Code 000074 302373	Property Name T. ANDERSON	Well Number 5
OGRID No. 873	Operator Name APACHE CORPORATION	Elevation 3544'

Surface Location

UL or lot No.	Section	Township	Range	Lot Idn	Feet from the	North/South line	Feet from the	East/West line	County
N	8	20-S	37-E		895	SOUTH	1835	WEST	LEA

Bottom Hole Location If Different From Surface

UL or lot No.	Section	Township	Range	Lot Idn	Feet from the	North/South line	Feet from the	East/West line	County
Dedicated Acres 40	Joint or Infill	Consolidation Code	Order No.						

NO ALLOWABLE WILL BE ASSIGNED TO THIS COMPLETION UNTIL ALL INTERESTS HAVE BEEN CONSOLIDATED
OR A NON-STANDARD UNIT HAS BEEN APPROVED BY THE DIVISION

OPERATOR CERTIFICATION

I hereby certify that the information herein is true and complete to the best of my knowledge and belief, and that this organization either owns a working interest or unleased mineral interest in the land including the proposed bottom hole location or has a right to drill this well at this location pursuant to a contract with an owner of such mineral or working interest, or to a voluntary pooling agreement or a compulsory pooling order heretofore entered by the division.

Sorina L. Flores 9/2/10
Signature Date
Sorina L. Flores
Printed Name

SURVEYOR CERTIFICATION

I hereby certify that the well location shown on this plat was plotted from field notes of actual surveys made by me or under my supervision, and that the same is true and correct to the best of my belief

Ronald E. Eidson 07/12/2010
Date Surveyed
Signature & Seal of Professional Surveyor
LA
0710961

Certificate No. RONALD EIDSON 3239

GEODETIC COORDINATES
NAD 27 NME

Y=577348.3 N
X=825762.9 E

LAT.=32.582785° N
LONG.=103.275749° W
LAT =32°34'58" N
LONG =103°16'33" W

1835'

895'

DISTRICT I
1625 N FRENCH DR., HOBBS, NM 88240

State of New Mexico
Energy, Minerals and Natural Resources Department

[Handwritten Signature]

Form C-1

DISTRICT II
1301 W GRAND AVENUE, ARTESIA, NM 88210

OIL CONSERVATION DIVISION
1220 SOUTH ST. FRANCIS DR.
Santa Fe, New Mexico 87505

Revised October 12, 20
Submit to Appropriate District Off
State Lease - 4 Cop
Fee Lease - 3 Cop

DISTRICT III
1000 Rio Brazos Rd., Aztec, NM 87410

DISTRICT IV
1220 S ST FRANCIS DR., SANTA FE, NM 87505

WELL LOCATION AND ACREAGE DEDICATION PLAT

☐ AMENDED REPORT

API Number 30-025-39900	Pool Code 44080, 46990, 47090 47080	Pool Name Monument, Paddock Monument, Blahney - Monument, Tubbs
Property Code 000044 302373	Property Name T. ANDERSON	Well Number 5
OGRID No. 873	Operator Name APACHE CORPORATION	Elevation 3544'

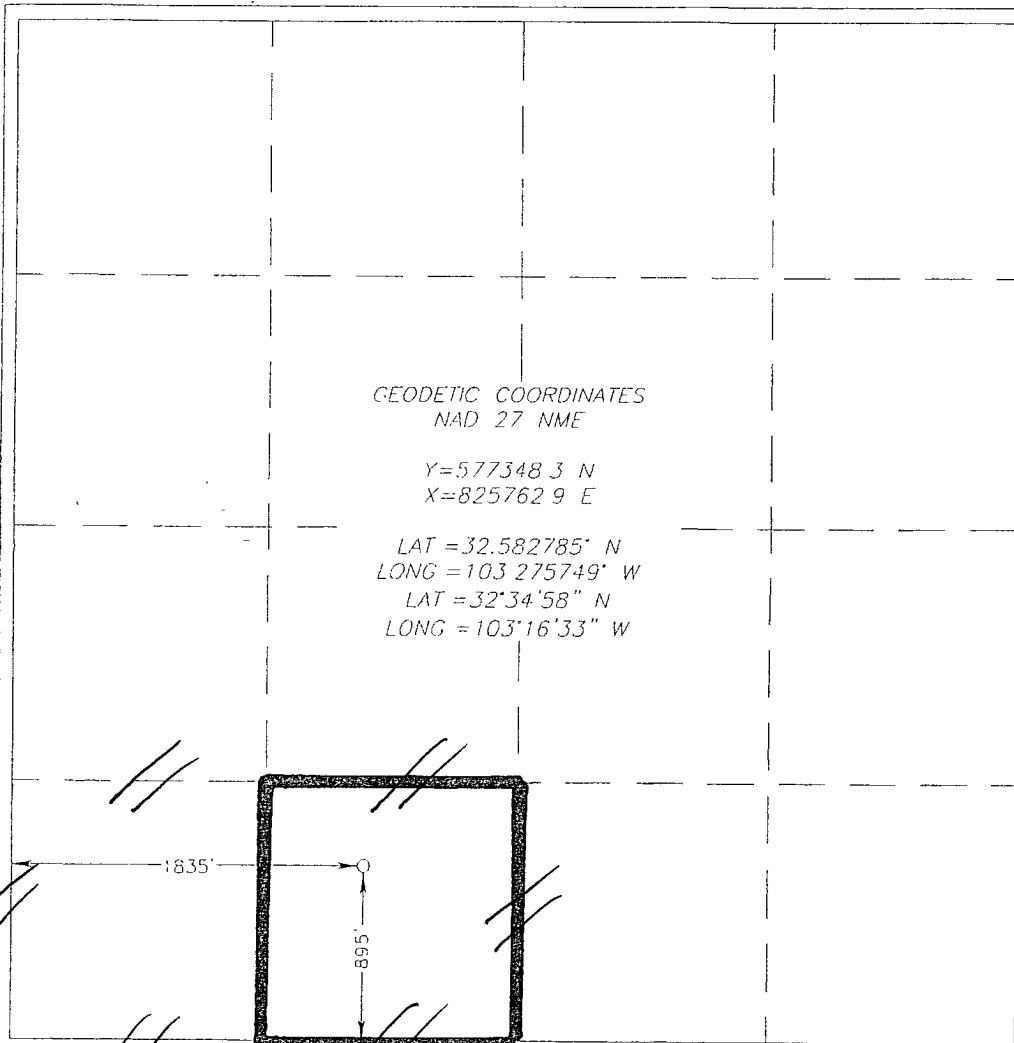
Surface Location

UL or lot No	Section	Township	Range	Lot Idn	Feet from the	North/South line	Feet from the	East/West line	County
N	8	20-S	37-E		895	SOUTH	1835	WEST	LEA

Bottom Hole Location If Different From Surface

UL or lot No	Section	Township	Range	Lot Idn	Feet from the	North/South line	Feet from the	East/West line	County
Dedicated Acres 40.80		Joint or Infill	Consolidation Code	Order No					

NO ALLOWABLE WILL BE ASSIGNED TO THIS COMPLETION UNTIL ALL INTERESTS HAVE BEEN CONSOLIDATED
OR A NON-STANDARD UNIT HAS BEEN APPROVED BY THE DIVISION



OPERATOR CERTIFICATION

I hereby certify that the information herein is true and complete to the best of my knowledge and belief, and that this organization either owns a working interest or unleased mineral interest in the land including the proposed bottom hole location or has a right to drill this well at this location pursuant to a contract with an owner of such mineral or working interest, or to a voluntary pooling agreement or a compulsory pooling order heretofore entered by the division

[Signature] 9/2/10
Signature Date
Sorina L. Flores
Printed Name

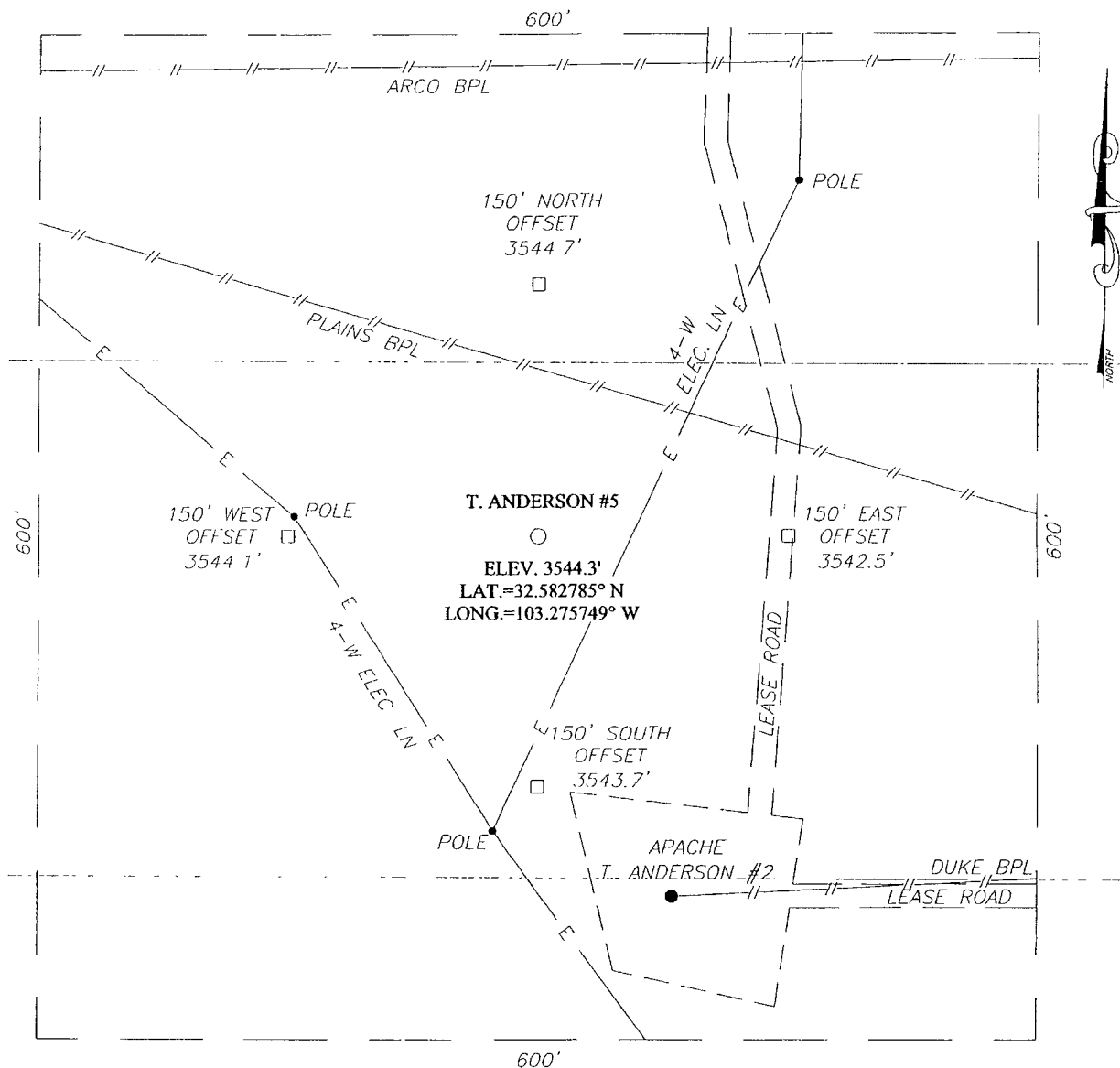
SURVEYOR CERTIFICATION

I hereby certify that the well location shown on this plat was plotted from field notes of actual surveys made by me or under my supervision, and that the same is true and correct to the best of my belief

[Seal]
Date Surveyed **JULY 16, 2010**
Signature & Seal of Professional Surveyor
[Signature] 07/12/2010
00961

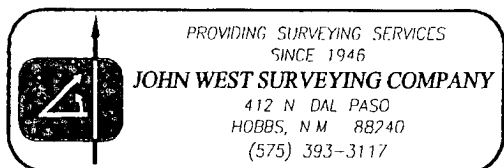
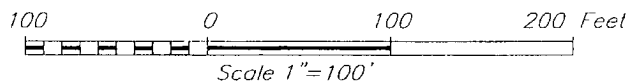
Certificate No **RONALD EIDSON 3239**

SECTION 8, TOWNSHIP 20 SOUTH, RANGE 37 EAST, N.M.P.M.,
LEA COUNTY, NEW MEXICO



DIRECTIONS TO LOCATION

FROM THE INTERSECTION OF STATE HWY #8 AND
STATE RD #322 GO SOUTH ON HWY #8 APPROX.
2.8 MILES TURN RIGHT AND GO WEST APPROX
0.7 MILES TURN LEFT AND GO SOUTH APPROX
0.3 MILES THE LOCATION STAKE IS APPROX 150
FEET WEST

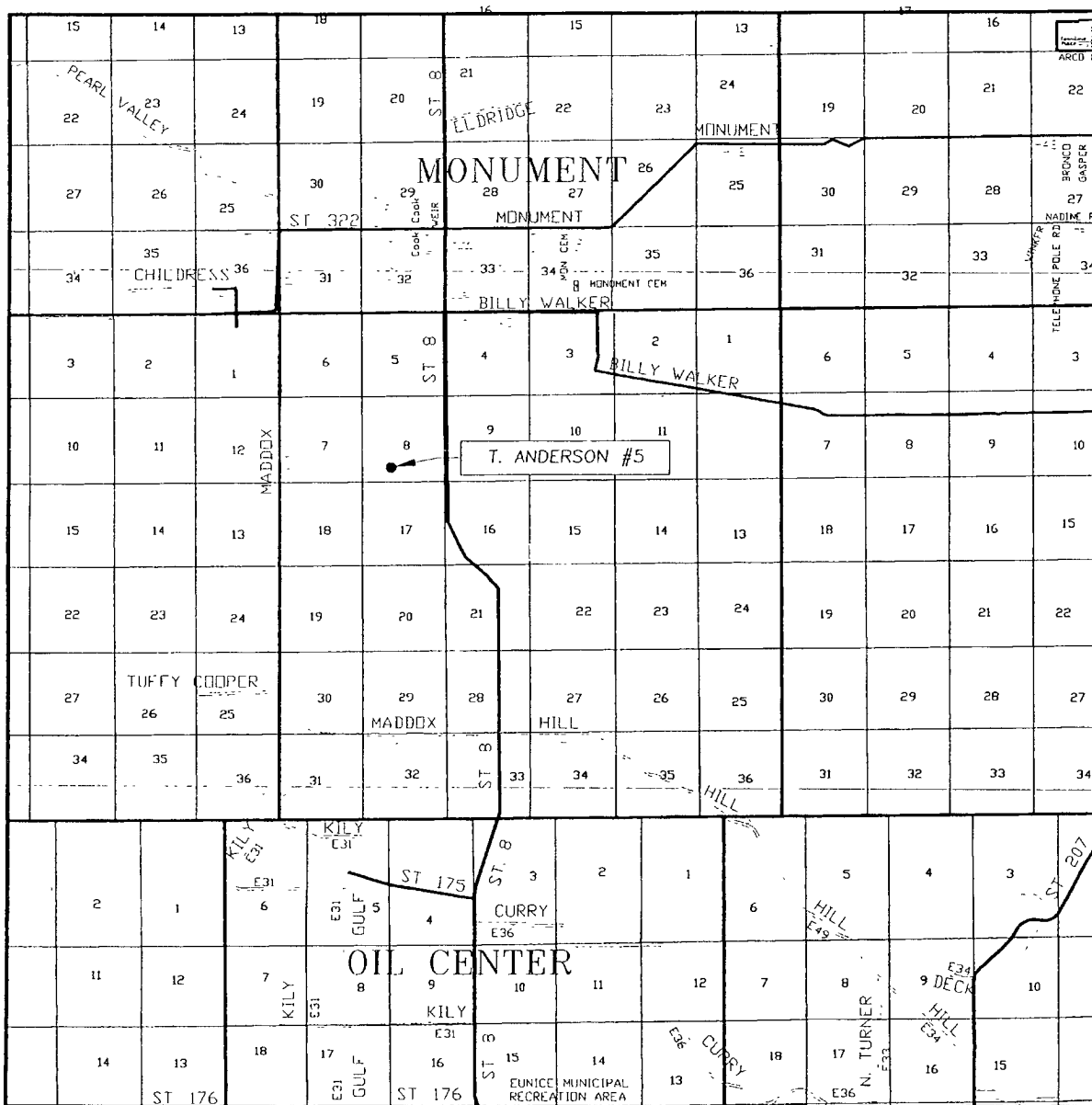


APACHE CORPORATION

T. ANDERSON #5 WELL
LOCATED 895 FEET FROM THE SOUTH LINE
AND 1835 FEET FROM THE WEST LINE OF SECTION 8,
TOWNSHIP 20 SOUTH, RANGE 37 EAST, N.M.P.M.,
LEA COUNTY, NEW MEXICO.

Survey Date: 7/6/10		Sheet 1 of 1 Sheets	
W.O. Number: 10 11 0961		Dr By. LA	Rev 1
Date 7/12/10		10110961	Scale 1"=100'

VICINITY MAP



SCALE: 1" = 2 MILES

SEC 8 TWP. 20-S RGE 37-E

SURVEY N.M.P.M

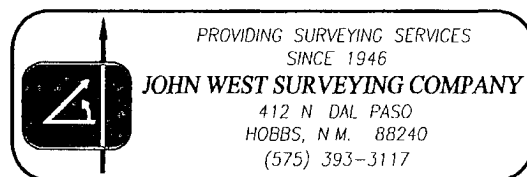
COUNTY LEA STATE NEW MEXICO

DESCRIPTION 895' FSL & 1835' FWL

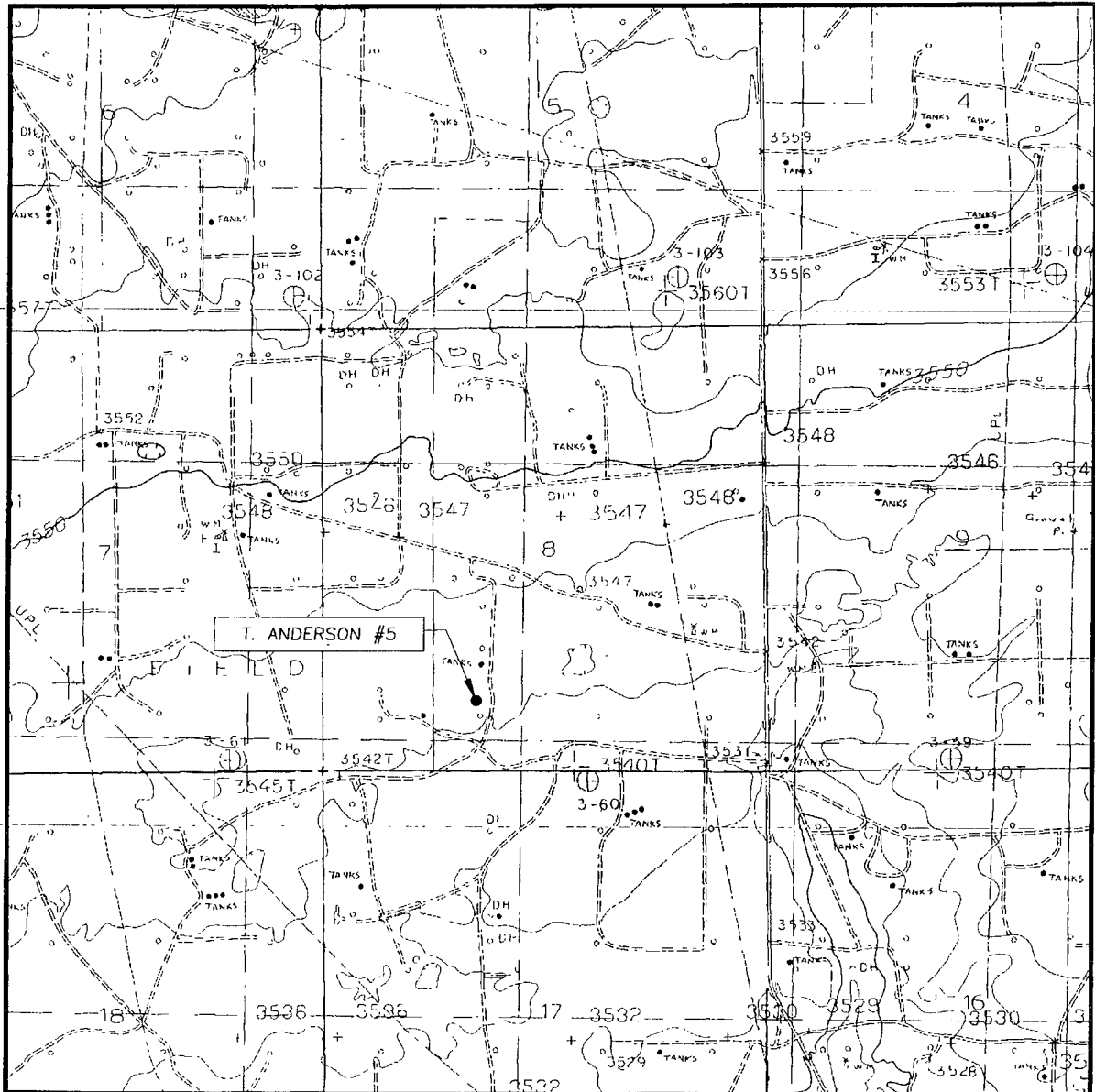
ELEVATION 3544'

OPERATOR APACHE CORPORATION

LEASE T ANDERSON



LOCATION VERIFICATION MAP



SCALE: 1" = 2000'

CONTOUR INTERVAL
MONUMENT SOUTH, N.M. - 10'

SEC. 8 TWP. 20-S RGE 37-E

SURVEY N.M.P.M.

COUNTY LEA STATE NEW MEXICO

DESCRIPTION 895' FSL & 1835' FWL

ELEVATION 3544'

OPERATOR APACHE CORPORATION

LEASE T. ANDERSON

U.S.G.S. TOPOGRAPHIC MAP
MONUMENT SOUTH, N.M.

