

1025 N. French Dr., Hobbs, NM 88240
District II
811 South First, Artesia, NM 88210
District III
1000 Rio Brazos Road, Aztec, NM 87410
District IV
2040 South Pacheco, Santa Fe, NM 87505

Energy Minerals and Natural Resources

Form C-101

Revised March 17, 1999

Oil Conservation Division
2040 South Pacheco
Santa Fe, NM 87505

Submit to appropriate District Office
State Lease - 6 Copies
Fee Lease - 5 Copies

☐ AMENDED REPORT

APPLICATION FOR PERMIT TO DRILL, RE-ENTER, DEEPEN, PLUGBACK, OR ADD A ZONE

Operator Name and Address ARCH PETROLEUM, INC. P.O. BOX 10340 MIDLAND, TEXAS 79702-7340		OGRID Number 962
Property Code 33419	Property Name RESLER "B"	API Number 30-025-36572
		Well No. 3

Surface Location

UL or lot no.	Section	Township	Range	Lot Idn	Feet from the	North/South line	Feet from the	East/West line	County
P	20	23S	37E		660'	SOUTH	660'	EAST	LEA CO.

Proposed Bottom Hole Location If Different From Surface

UL or lot no.	Section	Township	Range	Lot Idn	Feet from the	North/South line	Feet from the	East/West line	County

Proposed Pool 1 (37240) LANGLIE MATTIX-7 Rivers Queen Grayburg	Proposed Pool 2
--	-----------------

Work Type Code N	Well Type Code O	Cable/Rotary ROTARY	Lease Type Code P	Ground Level Elevation 3313'
Multiple NO	Proposed Depth 3700'	Formation YATES, 7-RIVERS	Contractor UNKNOWN	Spud Date WHEN APPROVED

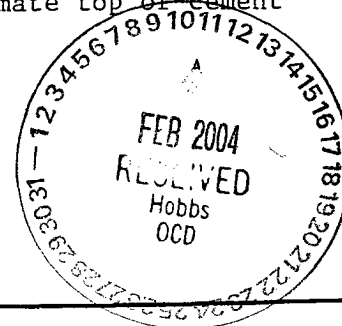
Proposed Casing and Cement Program

Hole Size	Casing Size	Casing weight/foot	Setting Depth	Sacks of Cement	Estimated TOC
25"	20"	Conductor	40'	Redi-mix	Surface
12 1/4"	8 5/8"	24	1100'	650 Sx.	Surface
7 7/8"	5 1/2"	15.5	3700'	750 Sx.	500'±

22 Describe the proposed program. If this application is to DEEPEN or PLUG BACK, give the data on the present productive zone and proposed new productive zone.
Describe the blowout prevention program, if any. Use additional sheets if necessary.

1. Drill 25" hole to 40'. Set 40' of 20" conductor and cement to surface with Redi-mix.
2. Drill 12 1/4" hole to 1100'. Run and set 1100' of 8 5/8" 24# J-55 ST&C casing. Cement with 650 Sx. of Class "C" cement + additives, circulate cement to surface.
3. Drill 7 7/8" hole to 3700'. Run and set 3700' of 5 1/2" 15.5# J-55 ST&C casing. Cement with 750 Sx. of Class "C" cement + additives, estimate top of cement 500' from surface.

Permit Expires 1 Year From Approval
Date Unless Drilling Underway



23 I hereby certify that the information given above is true and complete to the best of my knowledge and belief.

Signature:

Printed name: Joe T. Janica

Title: Agent

Date: 02/11/04

Phone: 505 201 9502

OIL CONSERVATION DIVISION

Approved by:

Title:

Approval Date:

Conditions of Approval:

PETROLEUM ENGINEER

Expiration Date:

DISTRICT I
P.O. Box 1980, Hobbs, NM 88241-1980

DISTRICT II
P.O. Drawer DD, Artesia, NM 88211-0719

DISTRICT III
1000 Rio Brazos Rd., Aztec, NM 87410

DISTRICT IV
P.O. BOX 2088, SANTA FE, N.M. 87504-2088

State of New Mexico
Energy, Minerals and Natural Resources Department

OIL CONSERVATION DIVISION
P.O. Box 2088
Santa Fe, New Mexico 87504-2088

Form C-102
Revised February 10, 1994
Submit to Appropriate District Office
State Lease - 4 Copies
Fee Lease - 3 Copies

WELL LOCATION AND ACREAGE DEDICATION PLAT

☐ AMENDED REPORT

API Number 30-025-36572	Pool Code 37240	Pool Name LANGLIE MATTIX-7 RIVERS-QUEEN-GRAYBURG
Property Code 33419	Property Name RESLER B	Well Number 3
OGRID No. 962	Operator Name ARCH PETROLEUM, INC.	Elevation 3313'

Surface Location

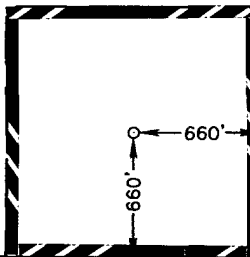
UL or lot No.	Section	Township	Range	Lot Idn	Feet from the	North/South line	Feet from the	East/West line	County
P	20	23-S	37-E		660	SOUTH	660	EAST	LEA

Bottom Hole Location If Different From Surface

UL or lot No.	Section	Township	Range	Lot Idn	Feet from the	North/South line	Feet from the	East/West line	County
Dedicated Acres 40	Joint or Infill	Consolidation Code	Order No.						

NO ALLOWABLE WILL BE ASSIGNED TO THIS COMPLETION UNTIL ALL INTERESTS HAVE BEEN CONSOLIDATED
OR A NON-STANDARD UNIT HAS BEEN APPROVED BY THE DIVISION

GEODETIC COORDINATES
NAD 27 NME
Y = 469099.7 N
X = 857008.2 E
LAT. 32°17'03.79"N
LONG. 103°10'41.26"W



OPERATOR CERTIFICATION

I hereby certify the the information
contained herein is true and complete to the
best of my knowledge and belief.

Joe T Janica
Signature
Joe T Janica
Printed Name
Agent
Title
02/11/04
Date

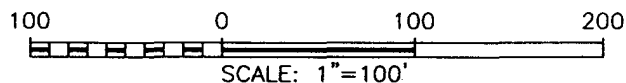
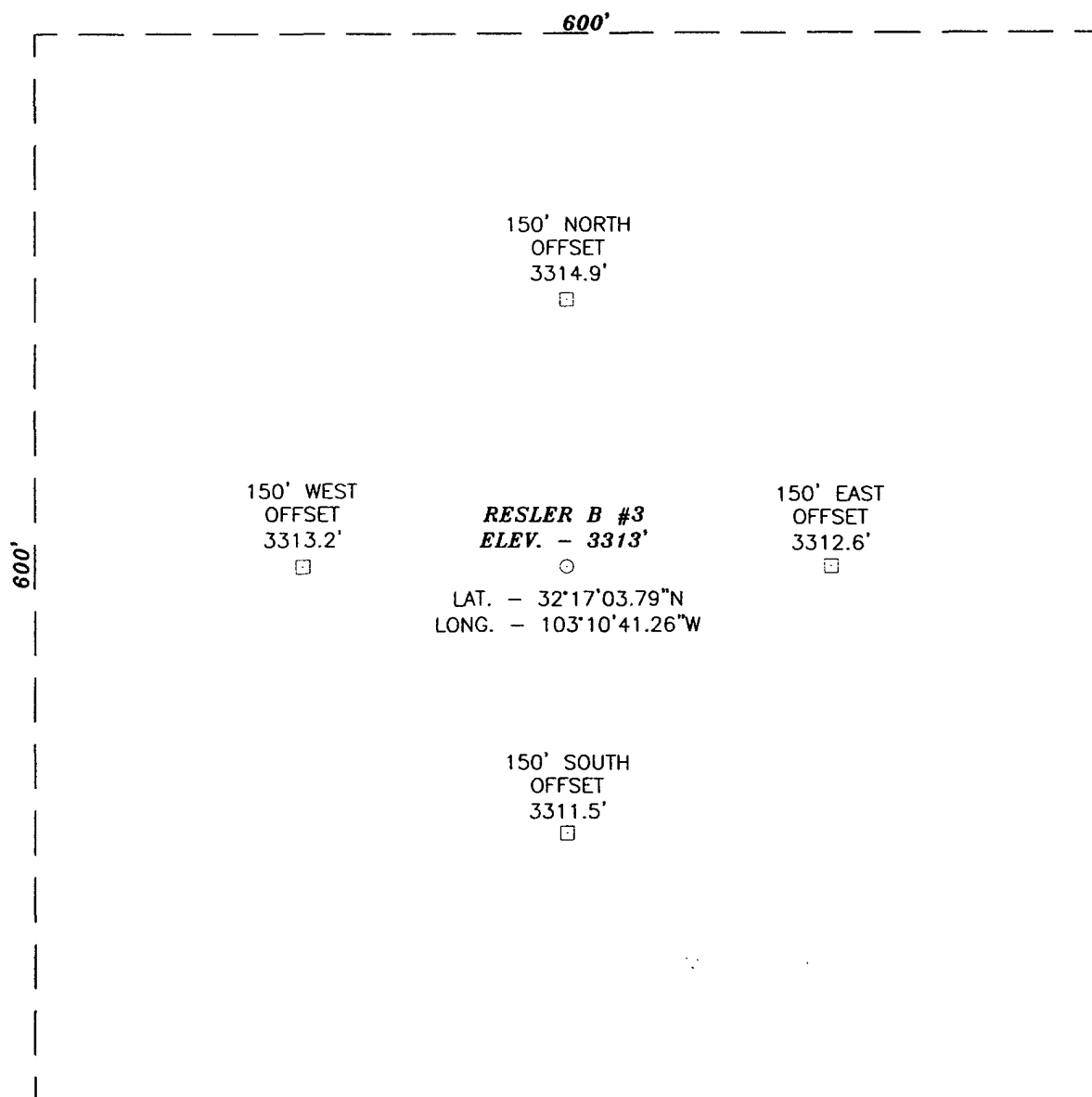
SURVEYOR CERTIFICATION

I hereby certify that the well location shown
on this plat was plotted from field notes of
actual surveys made by me or under my
supervision, and that the same is true and
correct to the best of my belief.

FEBRUARY 3, 2004

Date Surveyed
Signature & Seal of
Professional Surveyor
Gary Eidson
04-11.0123
Certificate No. **GARY EIDSON** 12641

SECTION 20, TOWNSHIP 23 SOUTH, RANGE 37 EAST, N.M.P.M.,
LEA COUNTY, NEW MEXICO.



DIRECTIONS TO LOCATION:

FROM THE INTERSECTION OF A CALICHE ROAD AND STATE HWY. #18 AT MILE POST #21. GO EAST 0.5 MILES TURN RIGHT. GO SOUTH 0.2 MILES TO TEE INTERSECTION. TURN LEFT AND GO 0.1 MILES. TURN RIGHT AND GO SOUTH 0.8 MILES. THIS LOCATION IS ON THE EAST SIDE OF ROAD APPROX. 400'.

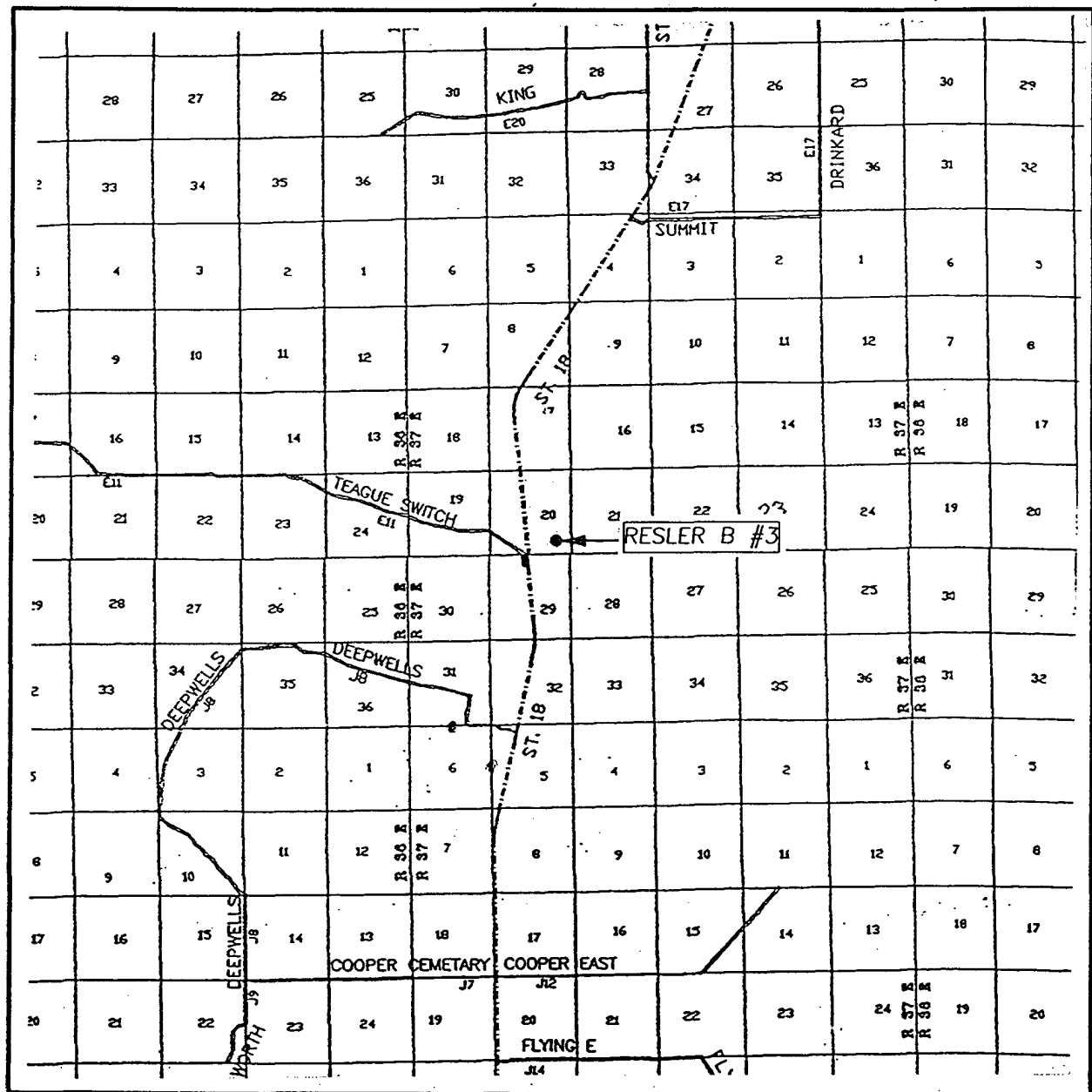
ARCH PETROLEUM, INC.

THE RESLER B #3 LOCATED 660 FROM
THE SOUTH LINE AND 660 FROM THE EAST LINE
SECTION 20, TOWNSHIP 23 SOUTH, RANGE 37 EAST,
N.M.P.M., LEA COUNTY, NEW MEXICO.

Survey Date: 2/03/04	Sheet 1 of 1 Sheets
W.O. Number: 04.11.0123	Drawn By: L.A.
Date: 2/06/04	DISK:CD#3
	04110123

JOHN WEST SURVEYING COMPANY
412 N. DAL PASO - HOBBS, NEW MEXICO - 505-393-3117

VICINITY MAP



SCALE: 1" = 2 MILES

SEC. 20 TWP. 23-S RGE. 37-E

SURVEY N.M.P.M.

COUNTY LEA

DESCRIPTION 660' FSL & 660' FEL

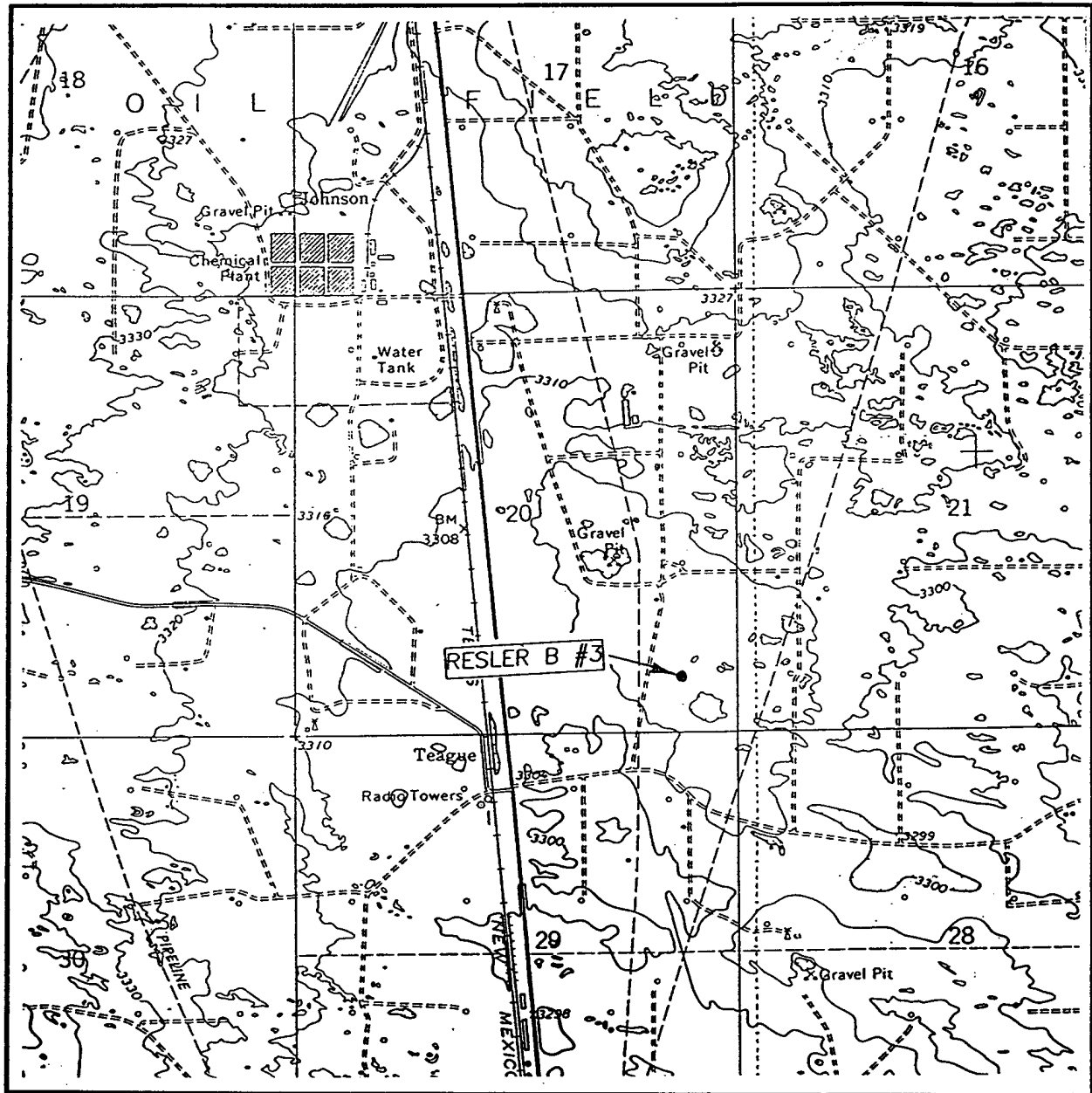
ELEVATION 3313'

OPERATOR -----

LEASE RESLER B

JOHN WEST SURVEYING
HOBBS, NEW MEXICO
(505) 393-3117

LOCATION VERIFICATION MAP



SCALE: 1" = 2000'

CONTOUR INTERVAL: 10'
RATTLESNAKE CANYON, N.M.

SEC. 20 TWP. 23-S RGE. 37-E

SURVEY N.M.P.M.

COUNTY LEA

DESCRIPTION 660' FSL & 660' FEL

ELEVATION 3313'

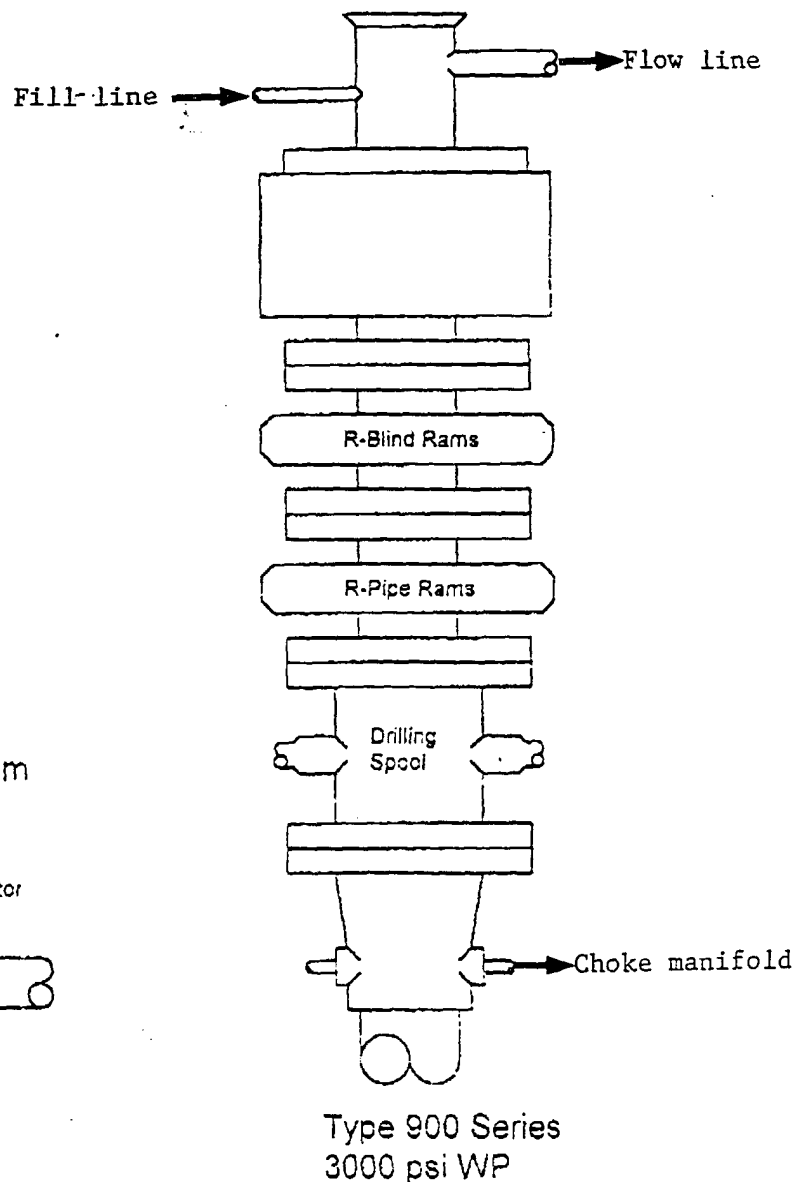
OPERATOR

LEASE RESLER B

U.S.G.S. TOPOGRAPHIC MAP
RATTLESNAKE CANYON, N.M.

JOHN WEST SURVEYING
HOBBS, NEW MEXICO
(505) 393-3117

BLOWOUT PREVENTER SYSTEM



Choke Manifold Assembly for 3M WP System

